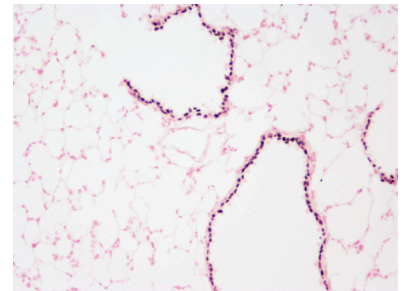


**Rabbit Anti-SOX2
Polyclonal Antibody**

Catalog Number: WRAB-SOX2
Quantity: 100 µl
Specificity: Human, mouse, other species not tested
Immunogen: Mouse SOX2 peptide (KLH conjugated)
Isotype: NA



Immunohistochemical Stain.

This picture shows adult mouse lung tissue embedded in paraffin and stained with anti-SOX2 rabbit serum (1:2000 dilution). SOX2 was visualized by DAB (black color) and counterstained with Nuclear Fast Red (pink color). Magnification 20x.

Applications and Suggested Dilutions*

Immunohistochemistry – 1:2000
Western Blot of tissue – 1:8000

*Specific dilutions and blocking conditions should be determined by the investigator.

QC Testing

Immunohistochemical staining.

Supplied As

Rabbit serum containing 0.01% sodium azide to preserve.

Storage

Aliquot and store at -20°C. Multiple freeze/thaw cycles not recommended.

Reference

Unpublished