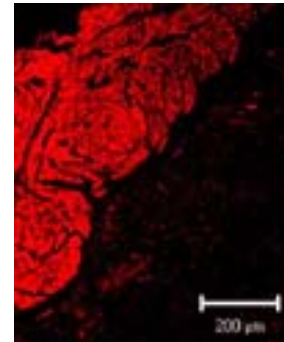


**Mouse Anti-Smooth Muscle Actin (Clone B4)
Monoclonal Antibody**

Catalog Number: LMAB-B4
Quantity: 100 μ l
Specificity: Reacts selectively with enteric smooth muscle γ -actin at high dilutions. It can also bind to an α -actin present in skeletal, cardiac & vascular smooth muscle actin preparations at low dilutions.
Immunogen: Chicken gizzard actin
Isotype: IgG₁/Kappa



Immunofluorescent Stain

The picture shows an immunofluorescent stain, detrusor muscle detected with anti-smooth muscle actin B4.

Applications and Suggested Dilutions*

Immunohistochemistry – 1:500 smooth muscle; 1:100 all actins
Blocking conditions: human specimens- 2% serum; mouse specimens- MOM kit (Vector Labs).
Immunoblots – 1:2000 smooth muscle; 1:500 all actins
Indirect Immunofluorescence – 1:100 -1:500 smooth muscle; 1:20 - 1:100 all actins.

*Specific dilutions and blocking conditions should be determined by the investigator.

QC Testing

Immunofluorescent staining

Supplied As

Ascites fluid containing 0.01% sodium azide to preserve.

Storage

Aliquot and store at -70°C, however, the antibody should be stable for months at -20°C and for weeks at 4°C. Multiple freeze/thaw cycles not recommended.

Reference

Lessard, JL. *Cell Motility and Cytoskeleton* (1998) 10:349-362.
Sawtell NM & Lessard JL. *J Cell Bio* (1989) 109:2929-37.

For research purposes only. Not approved for diagnostic purposes or use in humans.