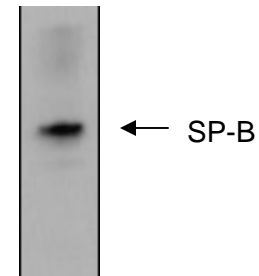


**Mouse Anti-Human SP-B (1B9)
Monoclonal Antibody**

Catalog Number: WMAB-1B9
Quantity: 100 µl
Specificity: Human SP-B (lung surfactant protein B)
Immunogen: Lyophilized human SP-B
Isotype: IgG_{2b}/Kappa



Western Blot.

The picture shows human bronchoalveolar lavage fluid subjected to non-reducing SDS-PAGE, transferred to nitrocellulose, and immunoblotted with anti-SP-B (1:5000 dilution). Protein bands were revealed using a HRP-conjugated goat anti-mouse secondary antibody and a chemiluminescent detection system.

Applications and Suggested Dilutions*

Immunoblots – 1:5000 (non-reduced samples only)
ELISA – 1:500
Do not use for Immunohistochemistry.

*Specific dilutions and blocking conditions should be determined by the investigator.

Supplied As

Ascites fluid containing 0.01% sodium azide to preserve.

Storage

Aliquot and store at -20°C. Multiple freeze/thaw cycles not recommended.

Reference

Khoor, A, et al., *J Histochem & Cytochem* (1994) 42:1187-9.
Stahlman, MT, et al., *J Histochem & Cytochem* (1992) 40:1471-80.

For research purposes only. Not approved for diagnostic purposes or use in humans.