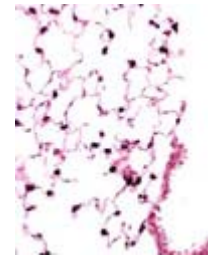


**Rabbit Anti-N-Terminal Pro SP-C
Polyclonal Antibody**

Catalog Number: WRAB-SPC
Quantity: 100 µl
Specificity: Human, mouse pro SP-C, other
species not tested
Immunogen: Recombinant human SP-C (aa1-
33) GST fusion
Isotype: NA



Immunohistochemical Stain.

The picture shows adult mouse lung tissue embedded in paraffin and stained with anti-N terminal proSP-C rabbit serum (1:2000 dilution). ProSP-C was visualized by DAB (black color) and counterstained with Nuclear Fast Red (pink color). Magnification 20x.

Applications and Suggested Dilutions*

Immunoblots – 1:10000
Immunohistochemistry – 1:2000

*Specific dilutions and blocking conditions should be determined by the investigator.

Supplied As

Rabbit serum containing 0.01% sodium azide to preserve.

Storage

Aliquot and store at -20°C. Multiple freeze/thaw cycles not recommended.

Reference

Glasser, W, Detmer, EA, Ikegami, M, Na, C-L & Whitsett, JA. *J. Biol Chem.* (2003) 278:14291-14298.
Nogee, LM, Dunbar, AE, Wert, SE, Askin, F, Hamas, A & Whitsett JA. *NEJM* (2001) 344:573-579.
Glasser, SW, Burhans, MS, Korfhagen, TR, Na, C-L, Sly, PD, Ross, GF, Ikegami, M & Whitsett JA. *PNAS* (2001) 98:6366-6371.

For research purposes only. Not approved for diagnostic purposes or use in humans.