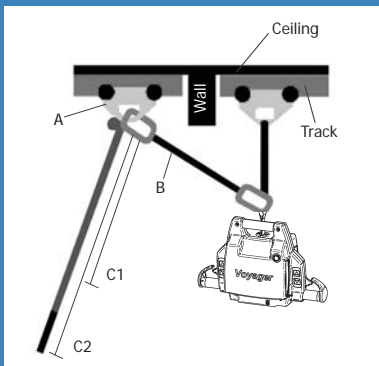
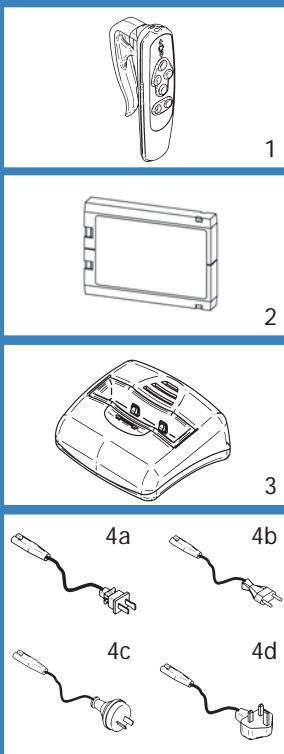


Ceiling Lift - Portable

# Voyager

Lifting capacity :  
440 lb / 200 kg / 31.49 st



# PRODUCT	DESCRIPTION	MARKET
#VOYAGER	Voyager / 2 Way - Portable Lift	NORTH AMERICA
#9800008	Voyager / 2 Way - Portable Lift	EUROPE & UNITED KINGDOM
#VOYAGER-AU	Voyager / 2 Way - Portable Lift	AUSTRALIA

√ = Included / O = Optional

# PART	DESCRIPTION	#VOYAGER	#9800008	#VOYAGER-AU
1	#700.13600 Hand Control - 2 Way	0	0	0
2	#A8500 Battery Pack	√	√	√
3	#700.13500 Battery Charger	√	√	√
4a	#402.00001 Charger Power Cord - North America	√		
4b	#402.00003 Charger Power Cord - Europe		√	
4c	#402.00004 Charger Power Cord - Australia			√
4d	#402.00005 Charger Power Cord - United Kingdom		√	

√ = Included / O = Optional

# PART	DESCRIPTION	#VOYAGER	#9800008	#VOYAGER-AU
DOOR HEADER PASS THROUGH COMPONENTS				
A	#700.10650 Trolley - KWIKtrak			O
A	#A5900 Trolley - BHM			O
A	#700.10655 Trolley - Goldman			O
A	#700.10640 Trolley - Techno, Liko & Marka			O
B	#A3710 Adjustable extension strap - Blue			O
C1	#700.08310 Reacher 61 cm / 24"			O
C2	#700.08320 Reacher 91 cm / 36"			O

SUGGESTED SLINGS & STRETCHERS	Hammock & Hammock 6	Hygienic	Quick Fit	Band	Chest	Total transfer	Combi	Repositioning	Bariatric	Walking	Soft	Universal	Mergue
	Slings										Stretchers		
	√	√	√				√	√					

(For more details, look into the Sling Section)

**FEATURES**

Weight	5.45 kg / 12 lb / 0.86 st
Lifting capacity	200 kg / 440 lb / 31.49 st
Soft start & stop movement	
Quick-Release feature allows very fast winding and unwinding of the strap	

**SAFETY FEATURES**

Emergency lowering device	Manual
Emergency brake	Prevent free fall
Current limiter & emergency stopping device	

**TECHNICAL SPECIFICATIONS**

CSA, UL & CE approved	
Vertical displacement speed	4 cm/sec (1.6 in/sec)

**BATTERY SPECIFICATIONS**

Rechargeable sealed lead acid	24Vdc 2.0Ah
Intelligent & fast charging system	2 to 3 hrs for complete charge
Battery capacity with load of 80 kg / 180 lb / 12.6 st	Up to 10 to 30 transfers per batteries
Low battery disconnect system	Protect batteries from been drained
Charge input - 90-240 Vac, 50-60 Hz, 27VA max.	
Charge indicator - Visual	

**STRAP SPECIFICATIONS**

Length	2.2 m (88 in)
Automatically stops unit if twisted	
Tested for 1363.5 kg / 3000 lb / 214.8 st	

**UNIT CONSTRUCTION**

Frame - high strength rolled steel zinc plated	
Cab - fire retardant plastic	

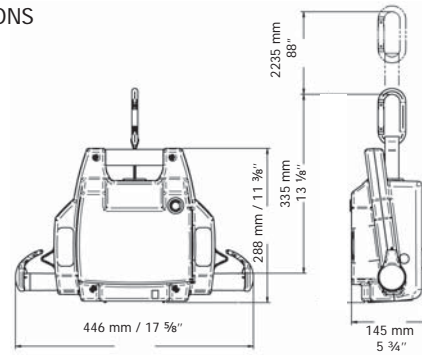
**COMMON SPARE PARTS**

A	#E0006	Gear motor
B	#A1360	Strap
C	#E8010	Main Circuit Board

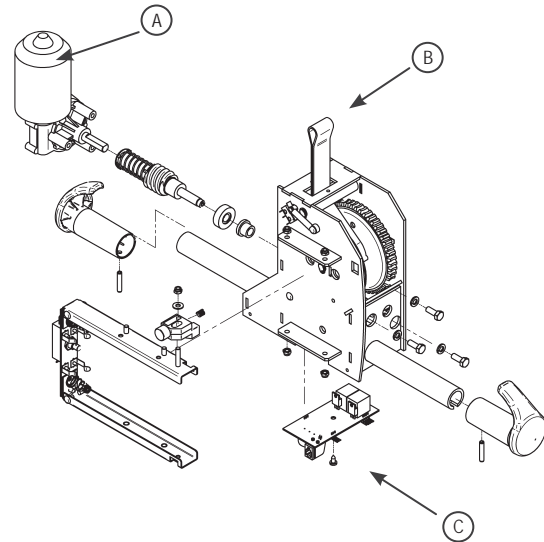
**TRACK LIFT ACCESSORIES**

D	#A5720	Trapeze
E	#A5710	Trapeze with hook 41 cm (16 in)
F	#A3710	Adjustable extension strap - Blue
G	#A5900	Trolley - BHM Track
G	#700.10650	Trolley - KWIKtrak
H	#700.05720	Weighing unit & Adapter (North America & Australia)
I	#700.05740	Spreader bar
J	#700.08310	Reacher - 61 cm (24 in.)
J	#700.08320	Reacher - 91 cm (36 in.)
K	#002.08150	Portable lift carry bag

**DIMENSIONS**



**EXPLODED VIEW**



**ACCESSORIES**

