



**TOILET  
PARTITIONS**



**SCRANTON PRODUCTS**  
*Worry-Free Brands. Your Every Need.™*

## A HISTORY OF LEADERSHIP

For more than 25 years, Scranton Products' (Santana/Comtec/Capitol) premium plastic toilet partitions have led the market, setting new benchmarks for the industry in quality and delivery. Manufactured under three distinctive brands, **Comtec Industries**, **Santana Products/Hiny Hiders** and **Capitol Partitions, Inc.**, we have combined durable materials and innovative engineering to become the foremost names in the design, development and manufacture of toilet partitions nationwide.

## VERSATILITY

Our toilet partitions and privacy screens offer a wide range of style options and colors for a variety of high use facilities such as schools, universities, sports complexes, arenas, parks, airports and anywhere cost-effective, durable and aesthetically pleasing facility partitions are required. Custom manufactured to meet exact specifications, Scranton Products' (Santana/Comtec/Capitol) brands provide worry-free solutions to your every need.

## SUSTAINABILITY

Scranton Products (Santana/Comtec/Capitol) takes recycling seriously. Our standard toilet partitions are made from a combination of virgin and post-industrial recycled material. We also offer, in limited colors, a 100% post-consumer recycled material. Scranton Products' (Santana/Comtec/Capitol) solid High-Density Polyethylene (HDPE) plastic products can contribute to LEED points in specific categories. Check with the United States Green Building Council for specific information.

## A SOLID ADVANTAGE

Our premium brands use only 1" thick solid, HDPE formulated from a homogenous color throughout compound, making it one of the most durable, cost-effective and good looking products in the industry.

Our toilet partitions and privacy screens out perform laminate, metal and wood partitions, providing years of everyday service. In fact, they are so durable, we back them up with a **15-year warranty** that covers breakage, corrosion, and delamination under normal conditions for 15 years from the date of receipt by the customer. The many low maintenance advantages of our toilet partitions and privacy screens include:

- Chemical Resistance
- Impact Resistance
- Moisture Impermeability
- Scratch Resistance
- Never Needs Painting
- Will Not Delaminate (solid plastic)
- Easy to Clean
- Will Not Rust
- Tough, Durable Hardware Options
- Graffiti Resistance — Resists Pencil, Pen, Paint & Most Markers



## STYLE

Different architectural nuances mandate different interior treatments, whether out of necessity or for aesthetic purposes. Scranton Products' (Santana/Comtec/Capitol) brands offer three styles of partitions, providing options that give architects and designers the freedom to create great interior space throughout the entire structure. Choose from standard and ADA compliant handicapped models in:

- Floor-Mounted Headrail-Braced
- Floor-to-Ceiling
- Ceiling-Hung

## ZERO SIGHT LINE COMPARTMENTS

The latest innovation in privacy is Scranton Products' (Santana/Comtec/Capitol) Zero Sight Line Compartments. These premium toilet partitions eliminate sight lines between the door and the pilasters to provide complete privacy for the occupant. Our Zero Sight Line Compartments are available only in overhead-braced and floor-to-ceiling models.

Zero Sight Line Compartments provide a "no peek" solution for restroom facilities.



## HARDWARE

Hardware is a vital part of what we do. That's why we use hardware engineered to provide years of worry-free service and designed to complement the appearance of the partitions.

### Our standard hardware features:

- Plastic Continuous Wall Brackets, 54"
- Aluminum Stirrup Brackets
- Plastic Pilaster Shoes
- Stainless Steel Pilaster Shoes
- Aluminum Latch
- 6" Aluminum Strike and Keeper
- 8" Aluminum Wrap-Around Hinge. The 8" aluminum hinge is field adjustable in increments of 30 degrees. The field adjustable hinge provides the flexibility of any combination of assemblies: left, right, in or out swinging doors.
- Integral Hinge
- Aluminum Headrail
- Stainless Steel Fasteners
- Chrome Plated Zamak Door Pulls, Coat Hook/Bumper and Wall Stop

### Our optional hardware features:

- Aluminum Continuous Wall Brackets, 54"
- Stainless Steel Continuous Wall Bracket, 54"
- Stainless Steel Stirrup Brackets
- Aluminum Heat Sinc
- 54" Aluminum Continuous Hinge
- 54" Stainless Steel Gravity Close Continuous Hinge. The Gravity Close Hinge allows the door to come to rest in a closed position or a 15 degree open position. This hinge is designed with surface mounted flanges and is available with optional covers.
- 54" Aluminum Continuous Strike
- Stainless Steel or Zamak Door Hardware may be available to meet specifications.



Plastic Continuous Wall Bracket



Plastic Pilaster Shoes

Stainless Steel Pilaster Shoes



Integral Hinge



Aluminum Stirrup Brackets



Aluminum Latch



8" Aluminum Wrap-Around Hinge



6" Aluminum Strike & Keeper



Aluminum Headrail



Stainless Steel Fasteners



Aluminum Continuous Wall Bracket



54" Aluminum Continuous Hinge



54" Aluminum Continuous Strike

## COLORS

Our partitions are available in a wide array of colors in three distinctive groups that combine for nearly two dozen color choices.

**Classics** — Classics feature our time-tested color palette along with the latest in designer color trends. And, as with all of our products, the color goes all the way through the sheet, not merely applied to the surface like some other materials.

**Impressions** — Impressions feature a range of marble, stone, and speckled patterns for an eye-appealing finish. Use them alone or combined with Classics colors for a unique complementary look.

**EverTuff-EX** — EverTuff-EX adds texture to provide a clean, modern and distinctive look to partitions. The great looking relief surface reduces signs of wear and deters graffiti.

### EVERTUFF-EX



Black-EX



Metallic Grey-EX



Beige-EX

Colors shown are as close to actual colors as allowed by the printing process. Actual samples are available.

### CLASSICS



Burgundy



Hunter



Mocha



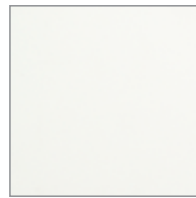
Black



Fossil



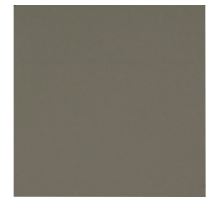
Parchment



White



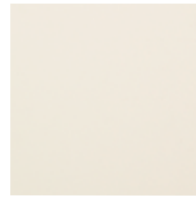
Beige



Charcoal Grey



Grey



Linen

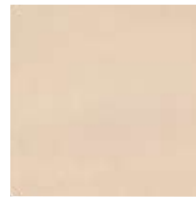


Blueberry

### IMPRESSIONS



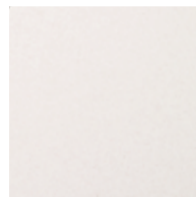
Paisley



Beige Flint



Grey Slate



Cappuccino



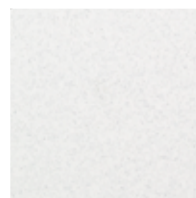
Sandstone



Azure



Sandcastle



Glacier Grey





## CUSTOM ENGRAVING

Using CAD/CAM software and state-of-the-art routing equipment, we can now engrave your company logo or a variety of symbols on compartment doors. Please contact Scranton Products (Santana/Comtec/Capitol) for additional details.

## DELIVERY

Because we extrude our own plastics and manufacture our own products, we can control production time from start to finish. And more importantly, that allows us to deliver partitions faster than anyone in the business — **shipping 5 days after order approval on most orders.** The best material, the most options and the fastest delivery, that's what our premium brands deliver every day.



Sales representatives are available nationwide. **Call 800.445.5148 for a Scranton Products (Santana/Comtec/Capitol) representative in your area, or visit us at [www.scrantonproducts.com](http://www.scrantonproducts.com)**



801 Corey Street • Moosic, PA 18507 • 800.445.5148 • Fax 800.551.6993 • [info@scrantonproducts.com](mailto:info@scrantonproducts.com)  
[www.scrantonproducts.com](http://www.scrantonproducts.com) • [www.comtecindustries.com](http://www.comtecindustries.com) • [www.hinyhiders.com](http://www.hinyhiders.com)

