

THE HATFIELD 2224

AT FOX HOLLOW

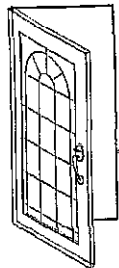


ELEVATION "A"

STANDARD FEATURES

2224 SQUARE FEET
4 BEDROOMS
2-1/2 BATHROOMS

Welcome Home to Quality



BRADY

H O M E S

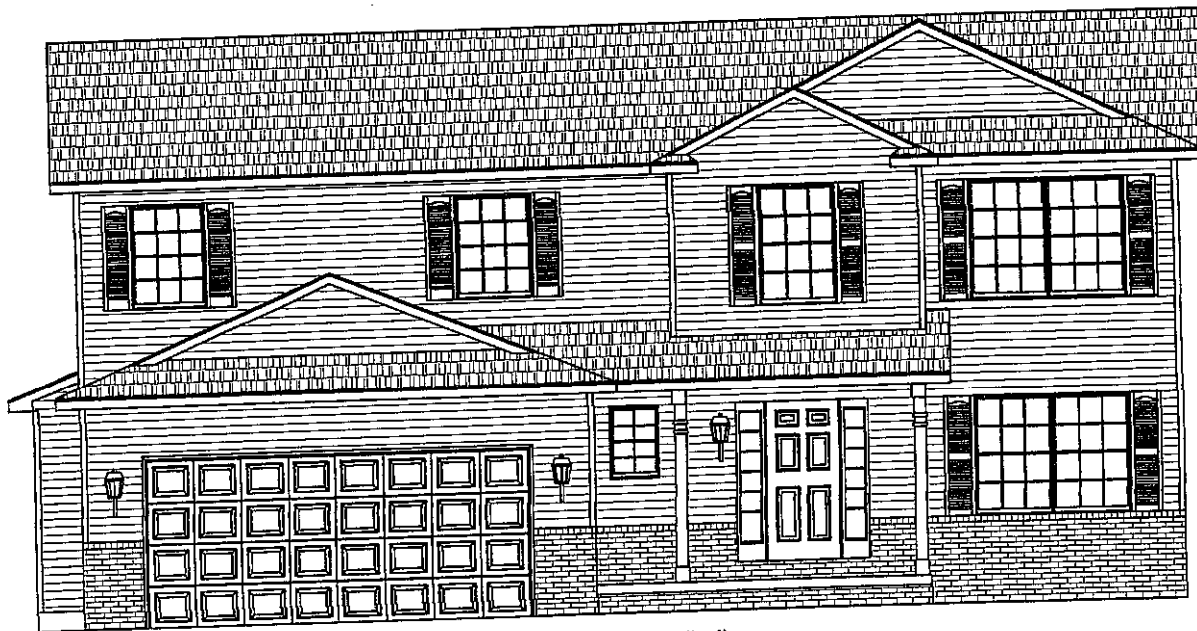
Bloomington, IL

Due to the continual improvement of the designs of Brady Homes, we reserve the right to revise and modify home plans without notice. As a result of this evolutionary process of continual improvement, Brady Homes is able to offer more desirable home plans and features.

HATFIELD 2224 -ELEVATIONS



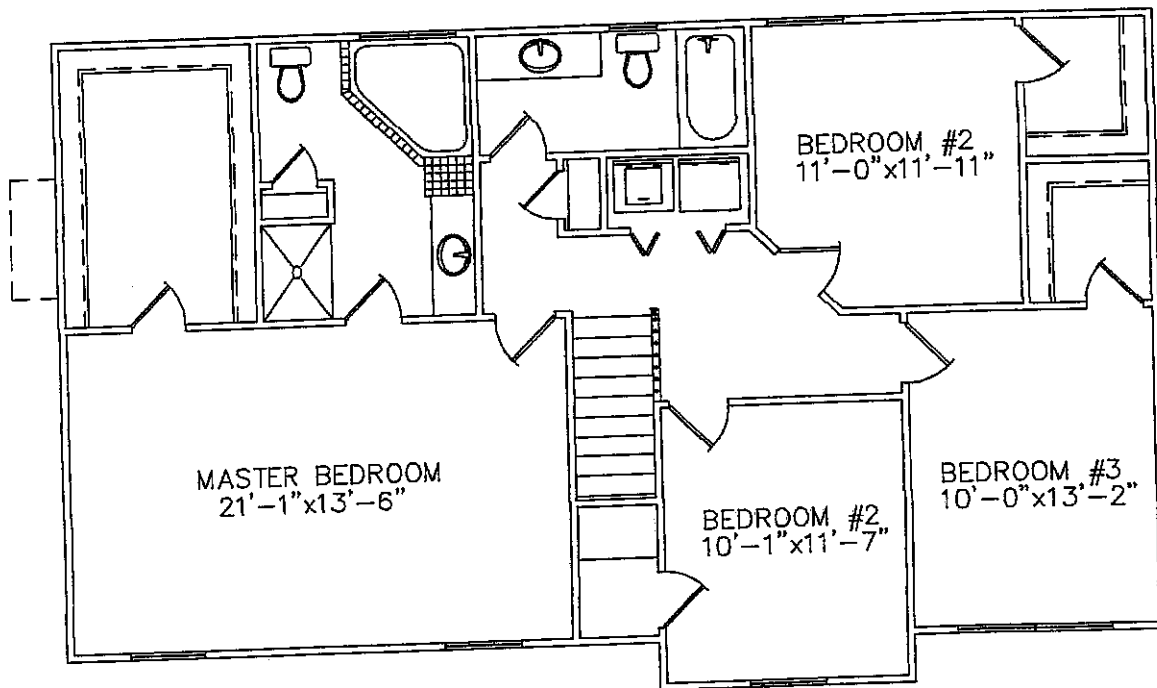
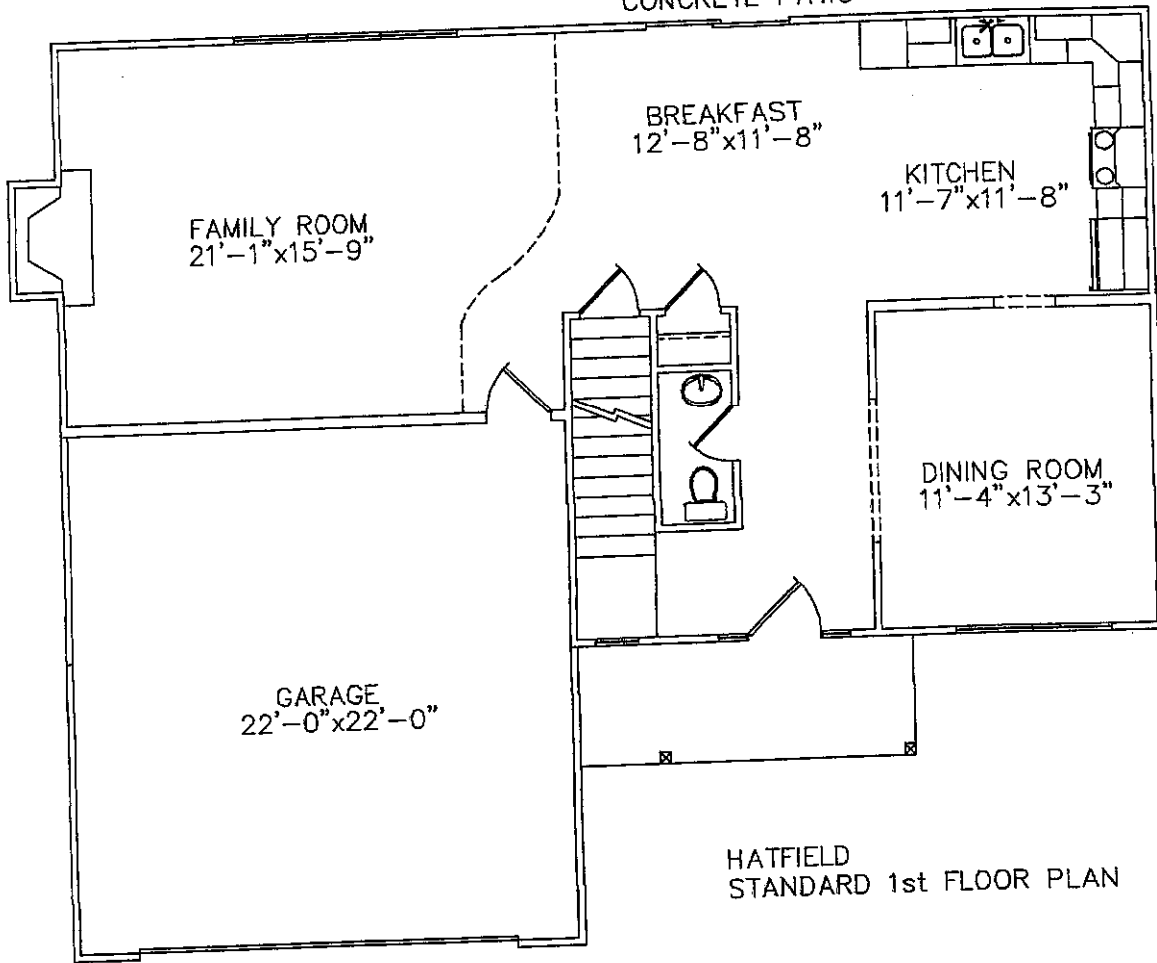
ELEVATION "B"



ELEVATION "C"

HATFIELD 2224 - STANDARD FLOOR PLANS

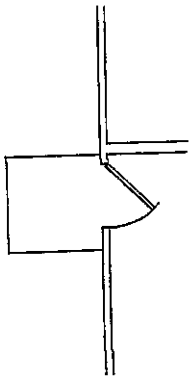
CONCRETE PATIO



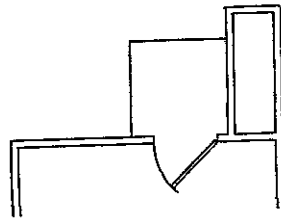
HATFIELD 2224 - OPTIONAL STRUCTURAL FEATURES



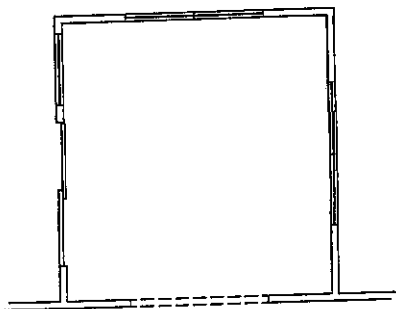
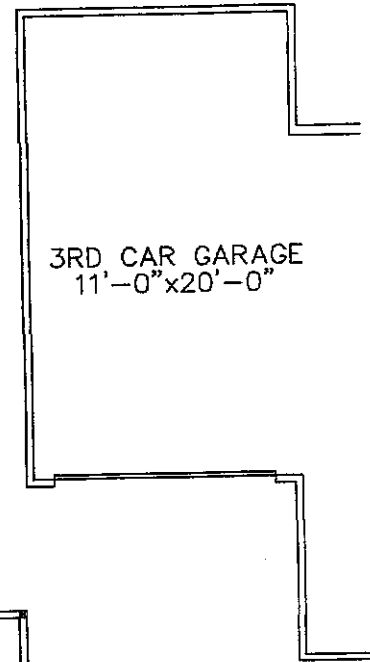
OPTION-3-CAR GARAGE
(SHOWN ON ELEVATION "A")



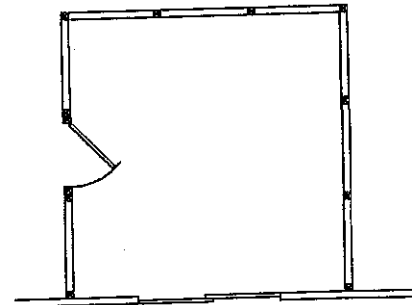
OPTION-GARAGE TO YARD
SERVICE DOOR
(STANDARD 2-CAR GARAGE)



OPTION-GARAGE TO YARD
SERVICE DOOR
(3-CAR GARAGE OPTION)

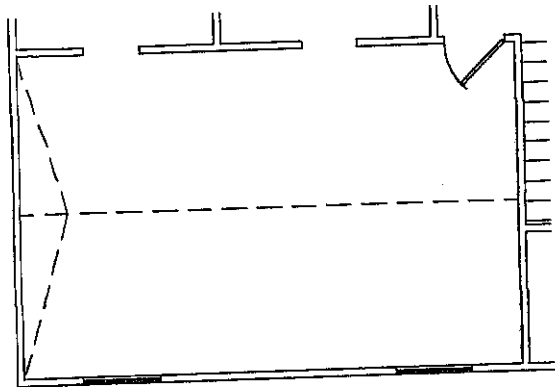


OPTION-12'x12' 4-SEASON ROOM

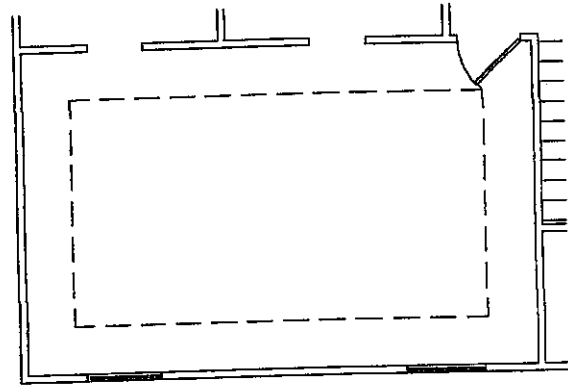


OPTION-12'x12' SCREENED-IN PORCH

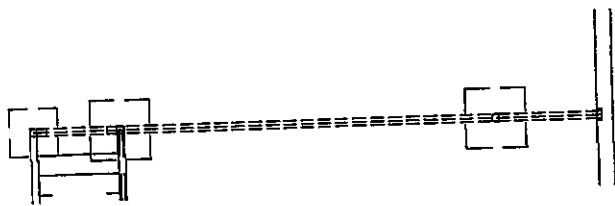
HATFIELD 2224 - OPTIONAL STRUCTURAL FEATURES



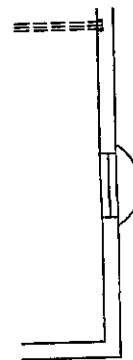
OPTION-CATH CEILING IN MASTER



OPTION- RAISED TRAY CEILING IN MASTER



OPTION-STEEL BEAM IN BASEMENT



OPTION-STANDARD
BASEMENT WINDOW

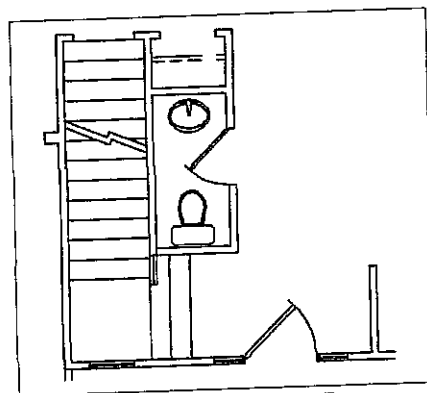
HATFIELD 2224 - OPTIONAL STRUCTURAL FEATURES



OPTION-9' WALL HEIGHT-1st FLOOR
(SHOWN ON ELEVATION "A")

9' WALL HEIGHT OPTION INCLUDES:

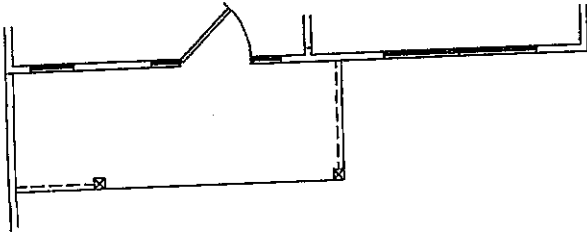
- 12" TRANSOM ABOVE FRONT ENTRY DOOR
- 12" ADDITIONAL WINDOW HEIGHT IN KITCHEN, FAMILY ROOM, ENTRY AND DINING ROOM.
- 8' TALL REAR SLIDER



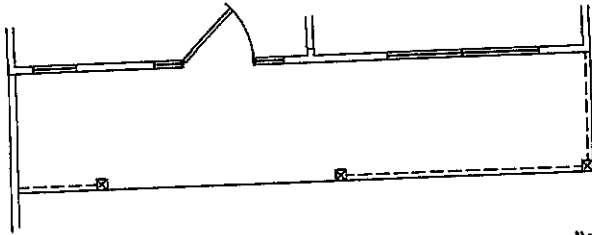
9' FIRST FLOOR

OTHER OPTIONAL STRUCTURAL FEATURES NOT SHOWN:
-9' FOUNDATION WALL HEIGHT

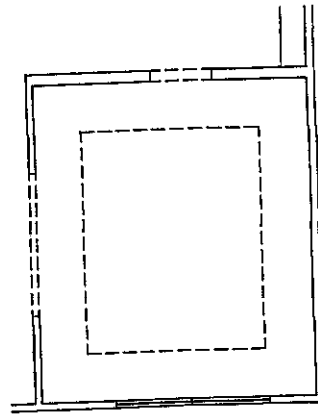
HATFIELD 2224 - OPTIONAL STUDIO FEATURES



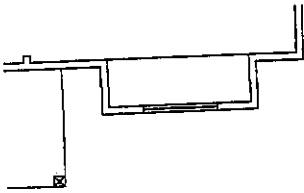
OPTION-PORCH RAILING ON ELEVATIONS "A" AND "C"



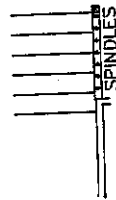
OPTION-PORCH RAILING ON ELEVATION "B"



OPTION- DROP TRAY CEILING IN DINING



OPTION-WINDOW SEAT IN DINING RM.



OPTION-SPINDLE AND RAIL

