

THE HEDGEWOOD 2122

AT FOX HOLLOW



ELEVATION "A"

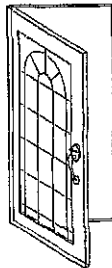
HEDGEWOOD FEATURES

2122 SQUARE FEET

4 BEDROOMS

2-1/2 BATHROOMS

Welcome Home to Quality



BRADY

H O M E S

Bloomington, IL

Due to the continual improvement of the designs of Brady Homes, we reserve the right to revise and modify home plans without notice. As a result of this evolutionary process of continual improvement, Brady Homes is able to offer more desirable home plans and features.

HEDGEWOOD 2122 – ELEVATION OPTIONS

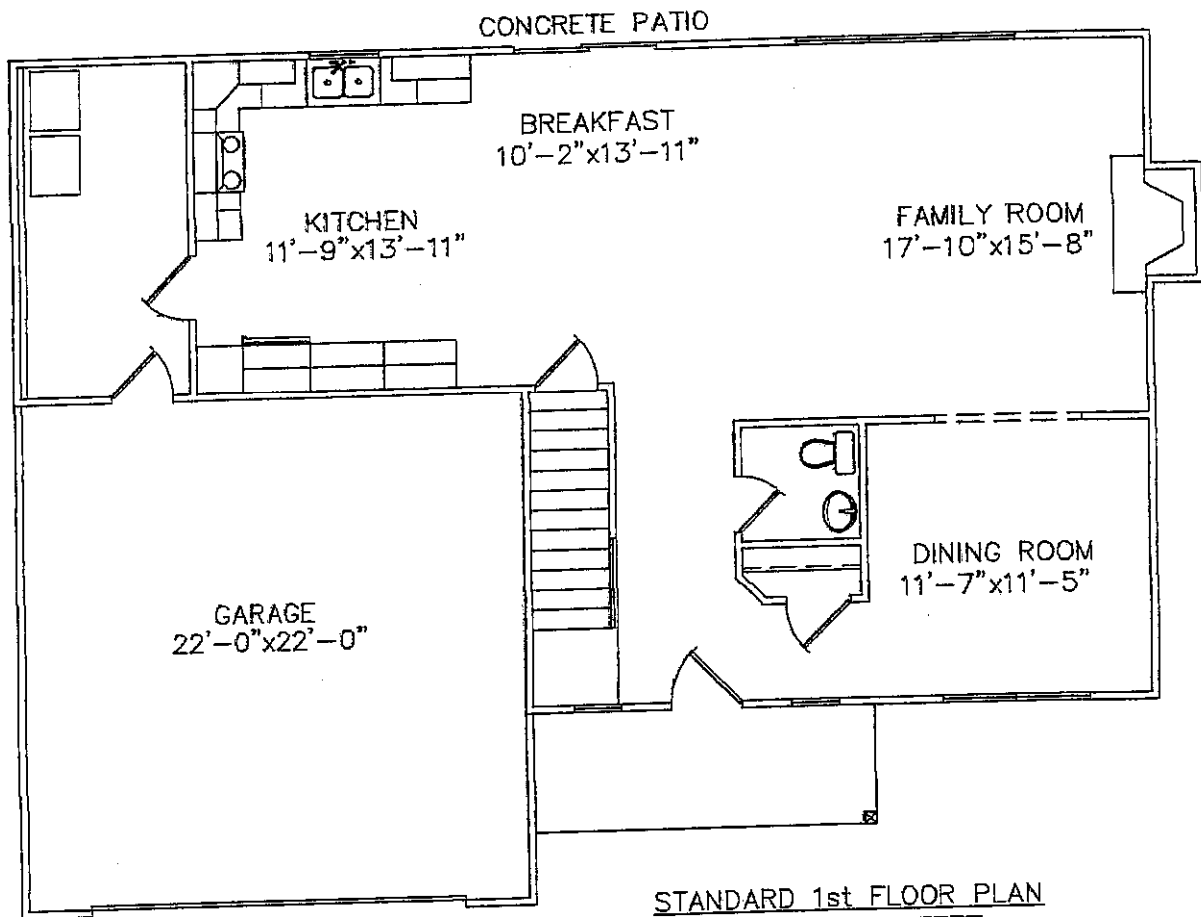


ELEVATION "B"

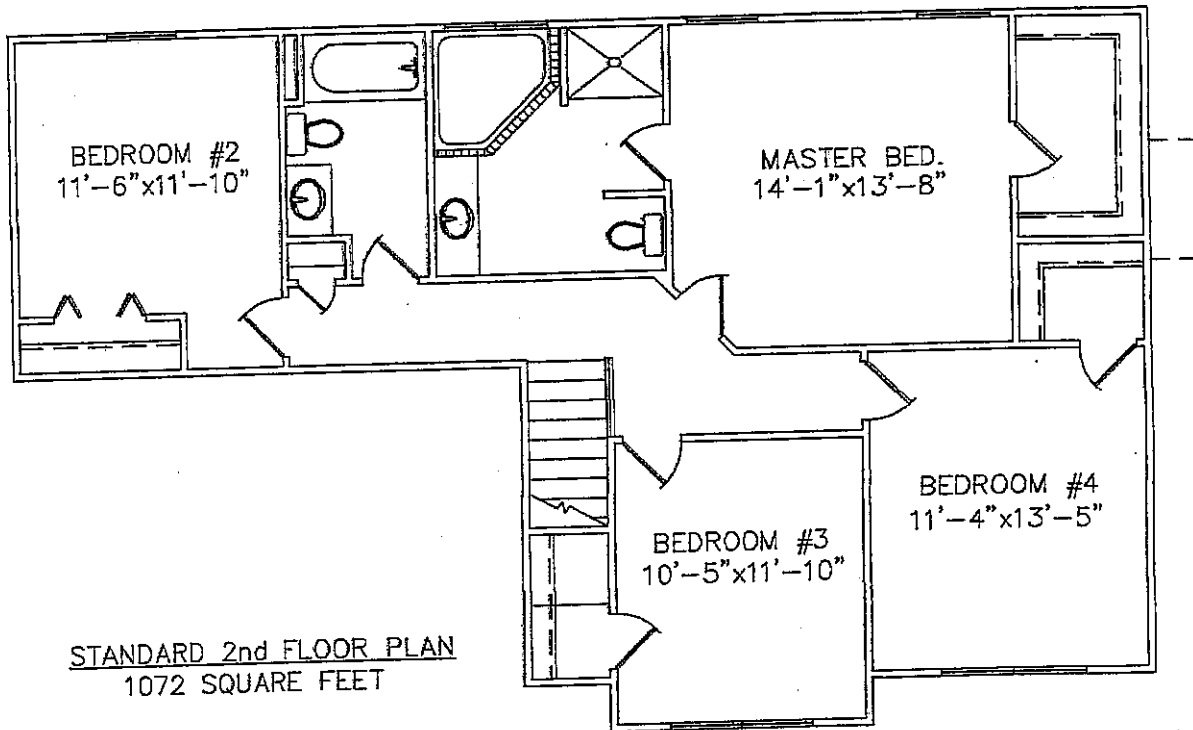


ELEVATION "C"

HEDGEWOOD 2122 - STANDARD FLOOR PLAN



STANDARD 1st FLOOR PLAN
1050 SQUARE FEET

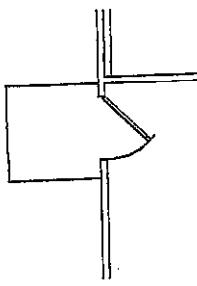


STANDARD 2nd FLOOR PLAN
1072 SQUARE FEET

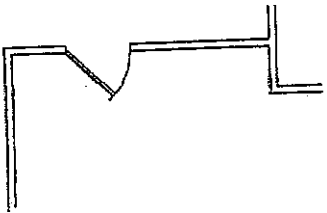
HEDGEWOOD 2122 - OPTIONAL STRUCTURAL FEATURES



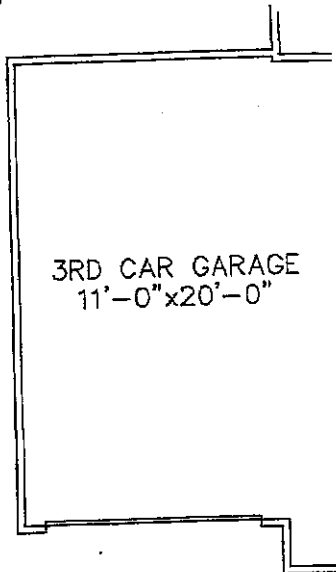
OPTION-3-CAR GARAGE
(SHOWN ON ELEVATION "A")



OPTION-GARAGE TO YARD
SERVICE DOOR
(STANDARD 2-CAR GARAGE)

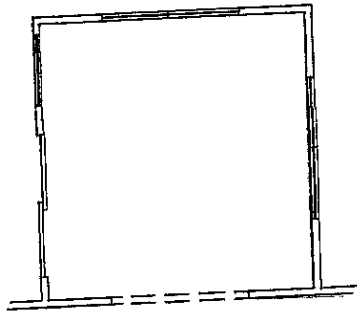


OPTION-GARAGE TO YARD
SERVICE DOOR
(3-CAR GARAGE OPTION)

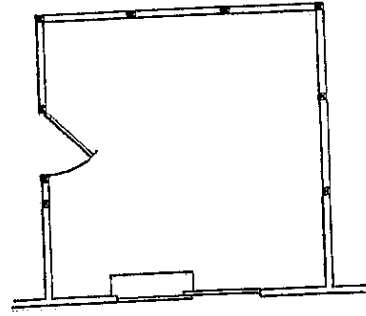


3RD CAR GARAGE
11'-0" x 20'-0"

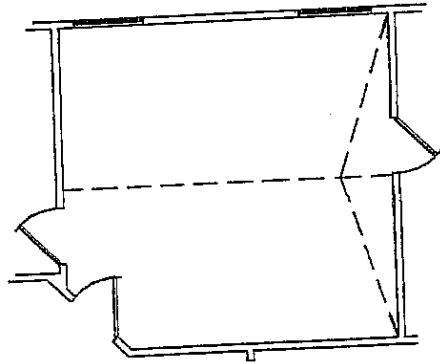
HEDGEWOOD 2122 - OPTIONAL STRUCTURAL FEATURES



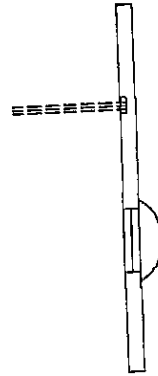
OPTION-12' X 12' 4 SEASON ROOM



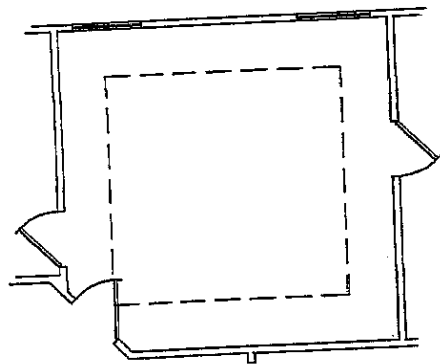
OPTION- 12' X 12' SCREENED-IN PORCH



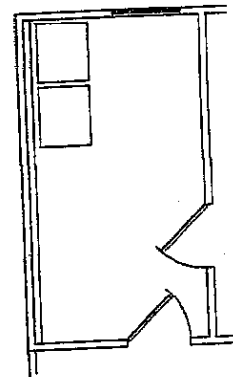
OPTION-CATH CEILING
IN MASTER BEDROOM



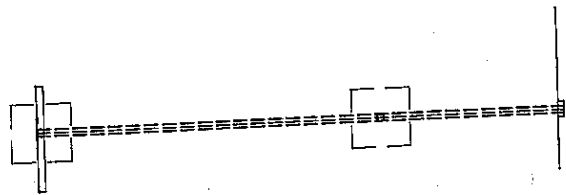
OPTION-STANDARD WINDOW
IN BASEMENT



OPTION-TREY CEILING
IN MASTER BEDROOM



OPTION-3436 WINDOW
IN LAUNDRY ROOM



OPTION-STEEL BEAM IN BASEMENT

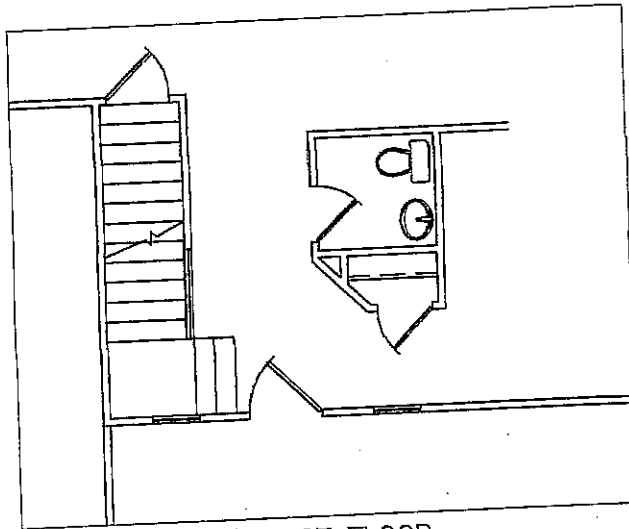
HEDGEWOOD 2122 - OPTIONAL STRUCTURAL FEATURES



OPTION-9' WALL HEIGHT-1st FLOOR
(SHOWN ON ELEVATION "A")

9' WALL HEIGHT OPTION INCLUDES:

- 12" TRANSOM ABOVE FRONT ENTRY DOOR
- 12" ADDITIONAL WINDOW HEIGHT IN KITCHEN, GREAT ROOM, AND DINING ROOM.
- 8' TALL REAR SLIDER

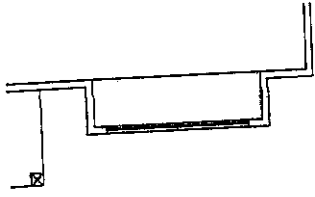


-9' FIRST FLOOR

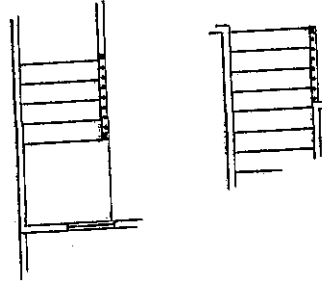
OTHER OPTIONAL STRUCTURAL FEATURES NOT SHOWN:

- 9' FOUNDATION WALL HEIGHT

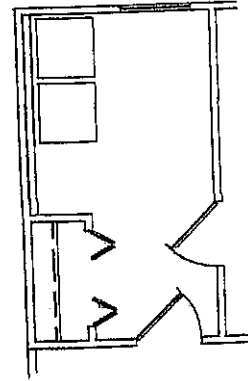
HEDGEWOOD 2122 - OPTIONAL STUDIO FEATURES



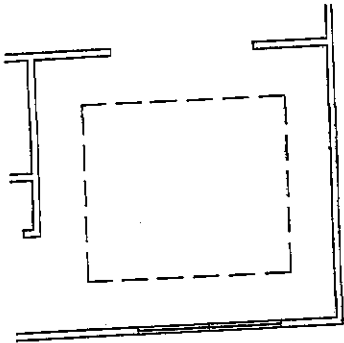
OPTION-WINDOW SEAT
IN DINING ROOM



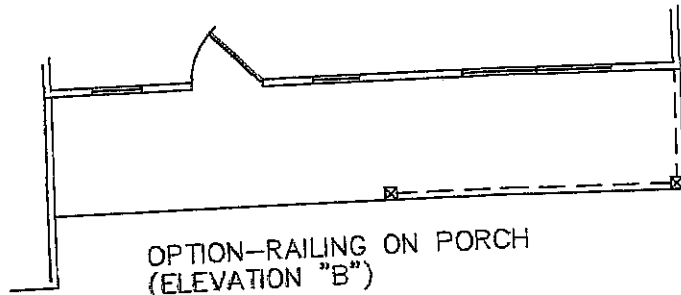
OPTION-SPINDLE AND RAIL



OPTION-CLOSET IN
LAUNDRY ROOM



OPTION-TREY CEILING
IN DINING ROOM



OPTION-RAILING ON PORCH
(ELEVATION "B")

