

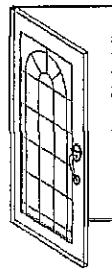
THE **JORDAN 2066**
AT FOX HOLLOW



ELEVATION "A"

STANDARD FEATURES
2066 SQUARE FEET
4 BEDROOMS
2-1/2 BATHROOMS

Welcome Home to Quality



BRADY

H O M E S

Bloomington, IL

Due to the continual improvement of the designs of Brady Homes, we reserve the right to revise and modify home plans without notice. As a result of this evolutionary process of continual improvement, Brady Homes is able to offer more desirable home plans and features.

JORDAN 2066 - ELEVATIONS

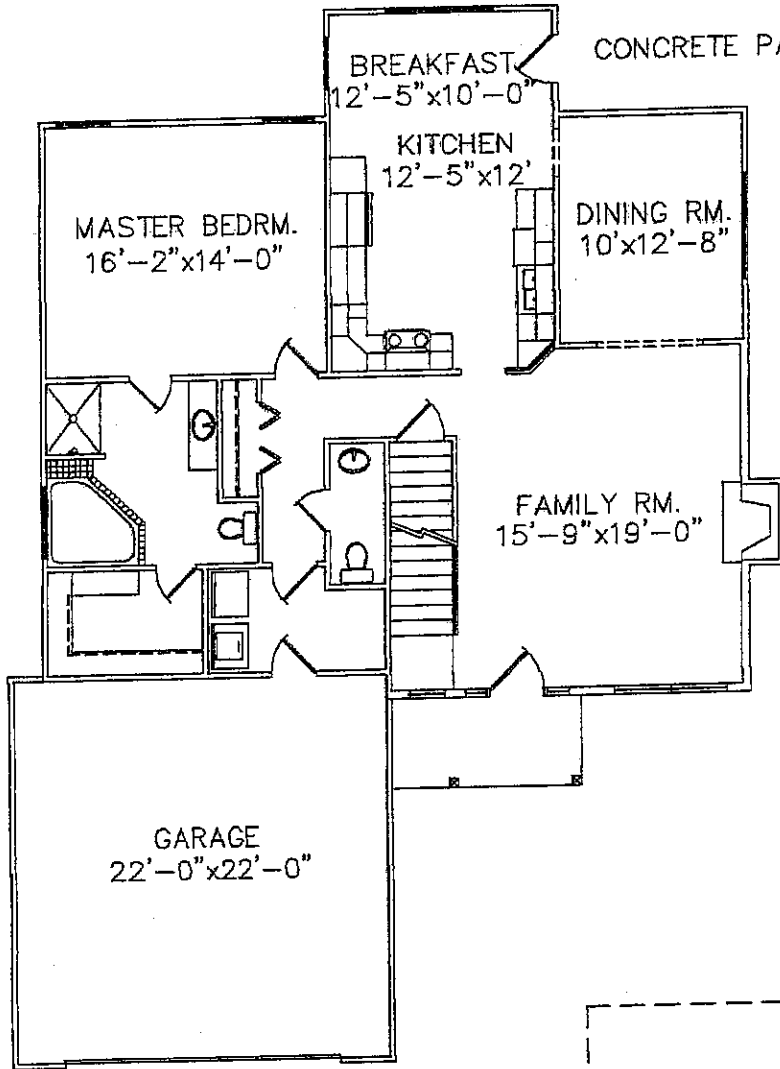


ELEVATION "B"

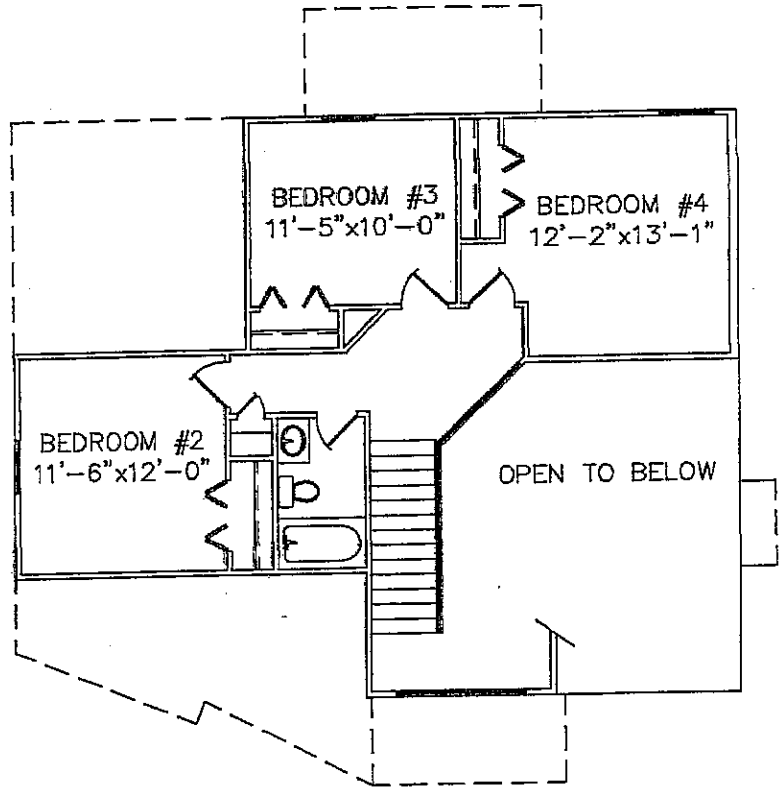


ELEVATION "C"

JORDAN 2066 - STANDARD FLOOR PLANS



JORDAN 2066
1st FLOOR PLAN
1358 SQUARE FEET

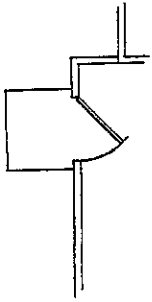


JORDAN 2066
2nd FLOOR PLAN
708 SQUARE FEET

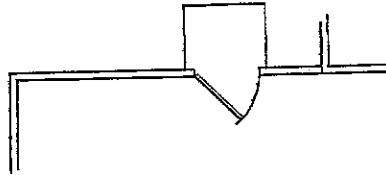
JORDAN 2066 - OPTIONAL STRUCTURAL FEATURES



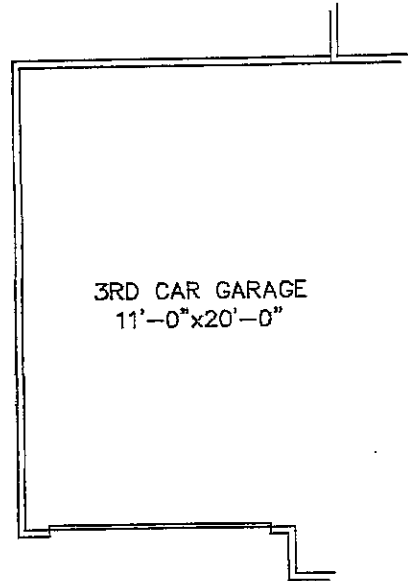
OPTION-3-CAR GARAGE
(SHOWN ON ELEVATION "A")



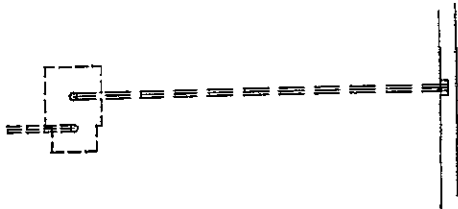
OPTION-GARAGE TO YARD
SERVICE DOOR
(STANDARD 2-CAR GARAGE)



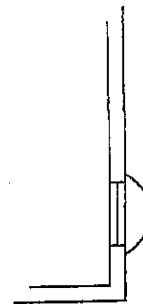
OPTION-GARAGE TO YARD
SERVICE DOOR
(3-CAR GARAGE OPTION)



3RD CAR GARAGE
11'-0" x 20'-0"

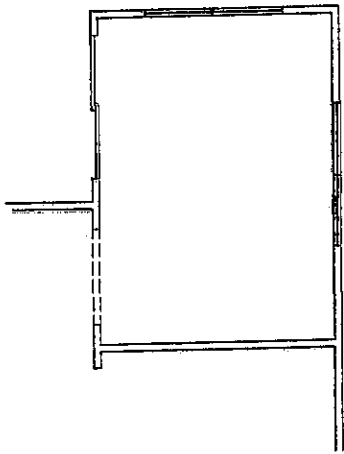


OPTION-STEEL BEAM IN BASEMENT

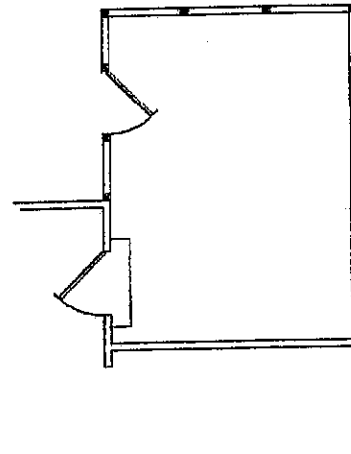


OPTION-STANDARD
BASEMENT WINDOW

JORDAN 2066 - OPTIONAL STRUCTURAL FEATURES



OPTION-4-SEASON ROOM



OPTION-SCREENED-IN PORCH

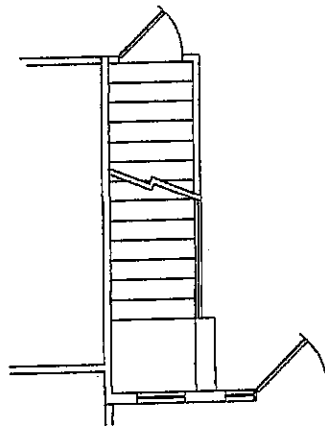
JORDAN 2066 - OPTIONAL STRUCTURAL FEATURES



OPTION-9' WALL HEIGHT-1st FLOOR
(SHOWN ON ELEVATION "A")

9' WALL HEIGHT OPTION INCLUDES:

- 12" TRANSOM ABOVE FRONT ENTRY DOOR AND REAR DOOR
- 12" ADDITIONAL WINDOW HEIGHT IN FAMILY ROOM

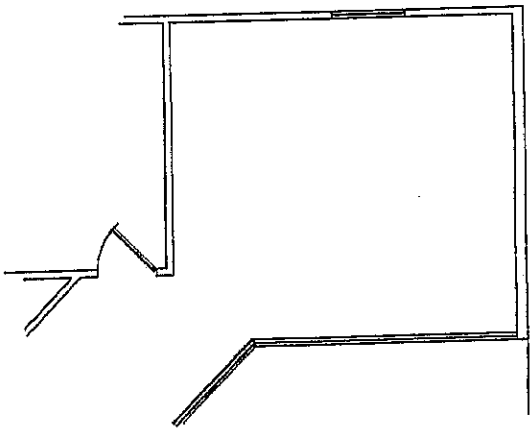


-9' FIRST FLOOR

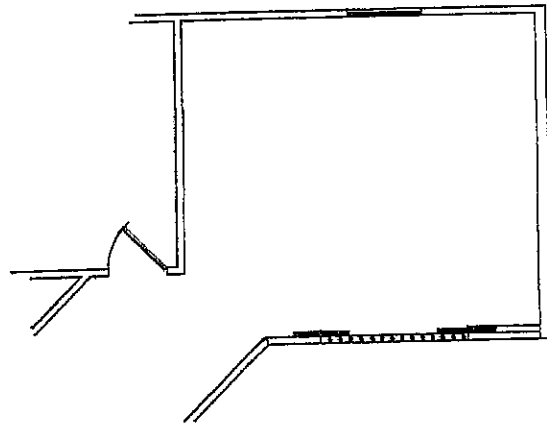
OTHER OPTIONAL STRUCTURAL FEATURES NOT SHOWN:

- 9' FOUNDATION WALL HEIGHT

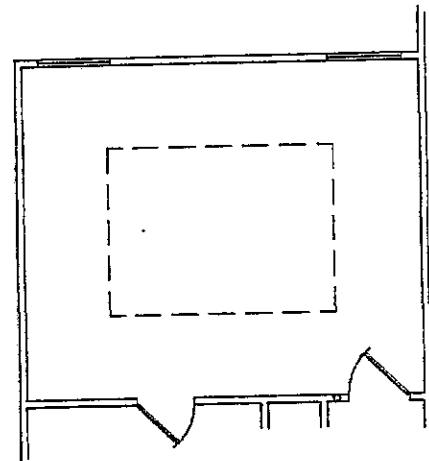
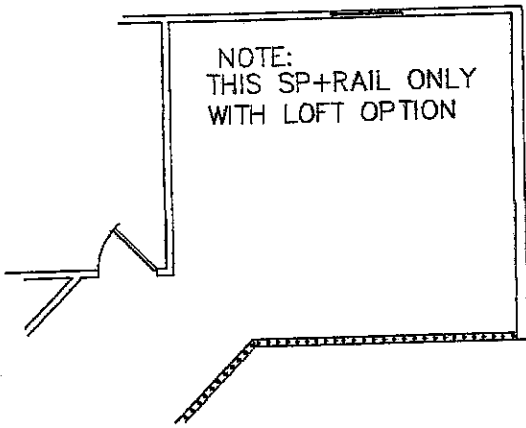
JORDAN 2066 - OPTIONAL STUDIO FEATURES



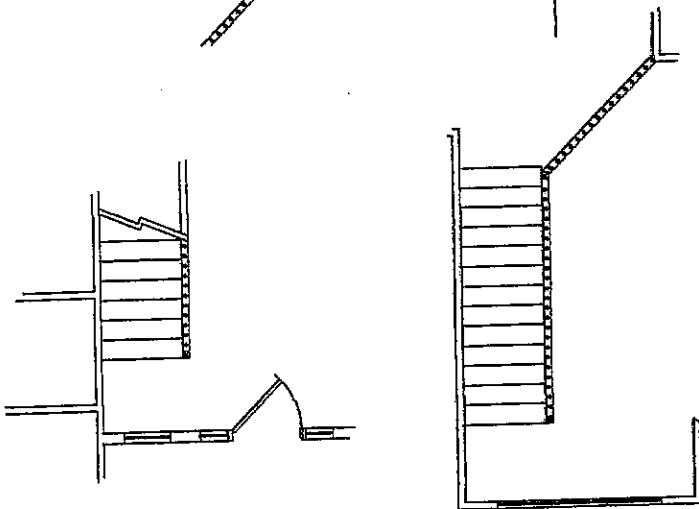
OPTION-LOFT WITH HALF WALL



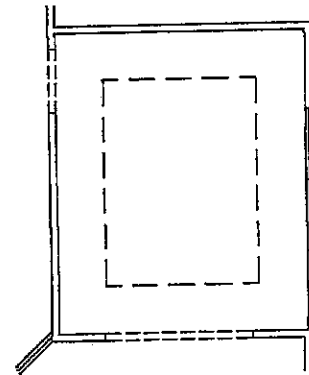
OPTIONAL LOFT WITH 6/0 OPENING AND DOORS



OPTION-RAISED TRAY CEILING
IN MASTER BEDROOM

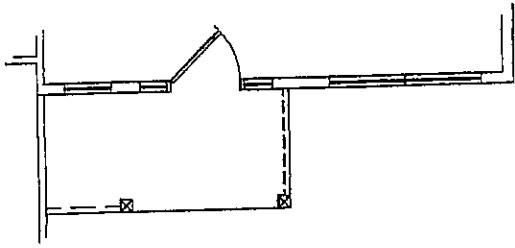


OPTION-SPINDLE AND RAIL

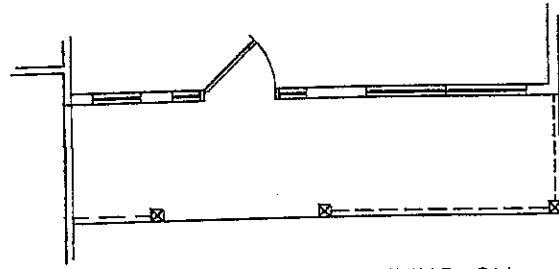


OPTION-TRAY CEILING
IN DINING ROOM

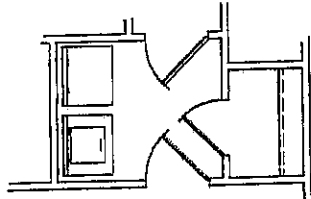
JORDAN 2066 - OPTIONAL STUDIO FEATURES



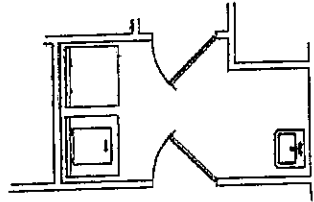
OPTION-PORCH RAILING ON ELEVATIONS "A" AND "B"



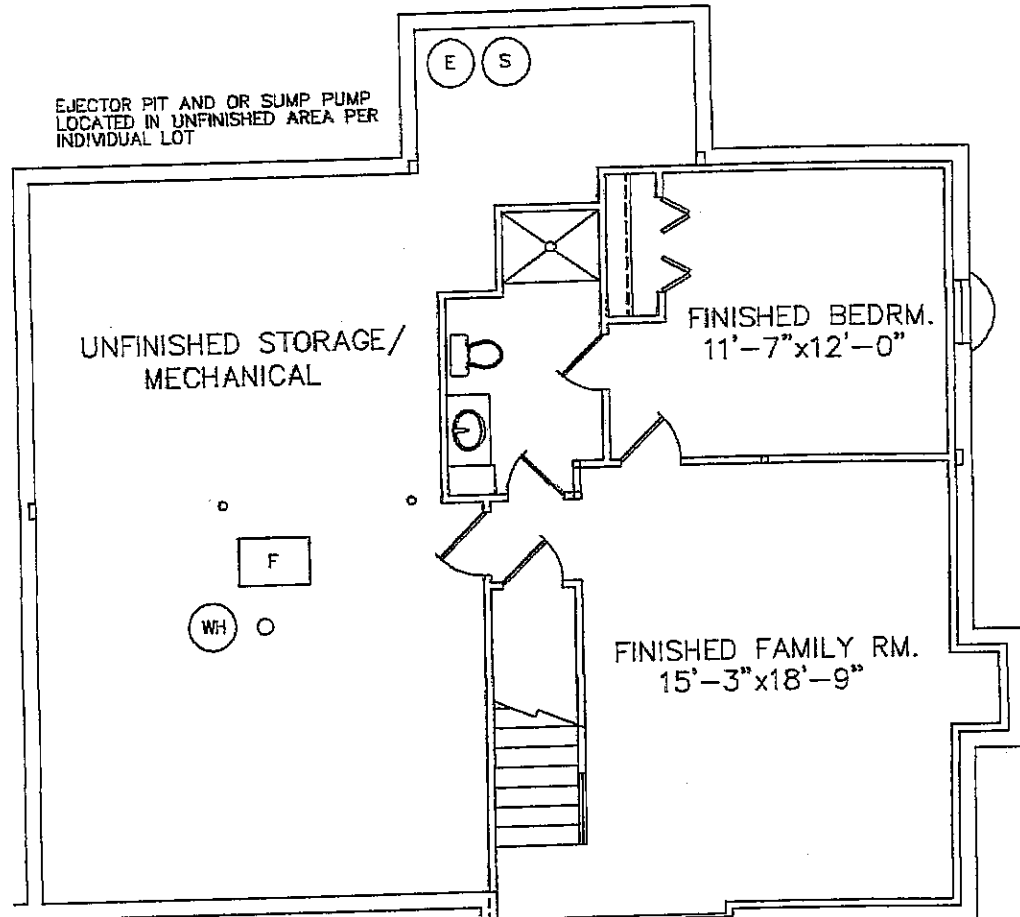
OPTION-PORCH RAILING ON ELEVATION "C"



OPTION-CLOSET IN LAUNDRY ROOM



OPTION-LAUNDRY TUB IN LAUNDRY ROOM



FINISHED BASEMENT OPTIONS

# 1 FAMILY ROOM	318 SQ FT
# 2 FAMILY ROOM AND BATH	385 SQ FT
# 3 FAMILY ROOM, BATH AND BEDROOM	562 SQ FT