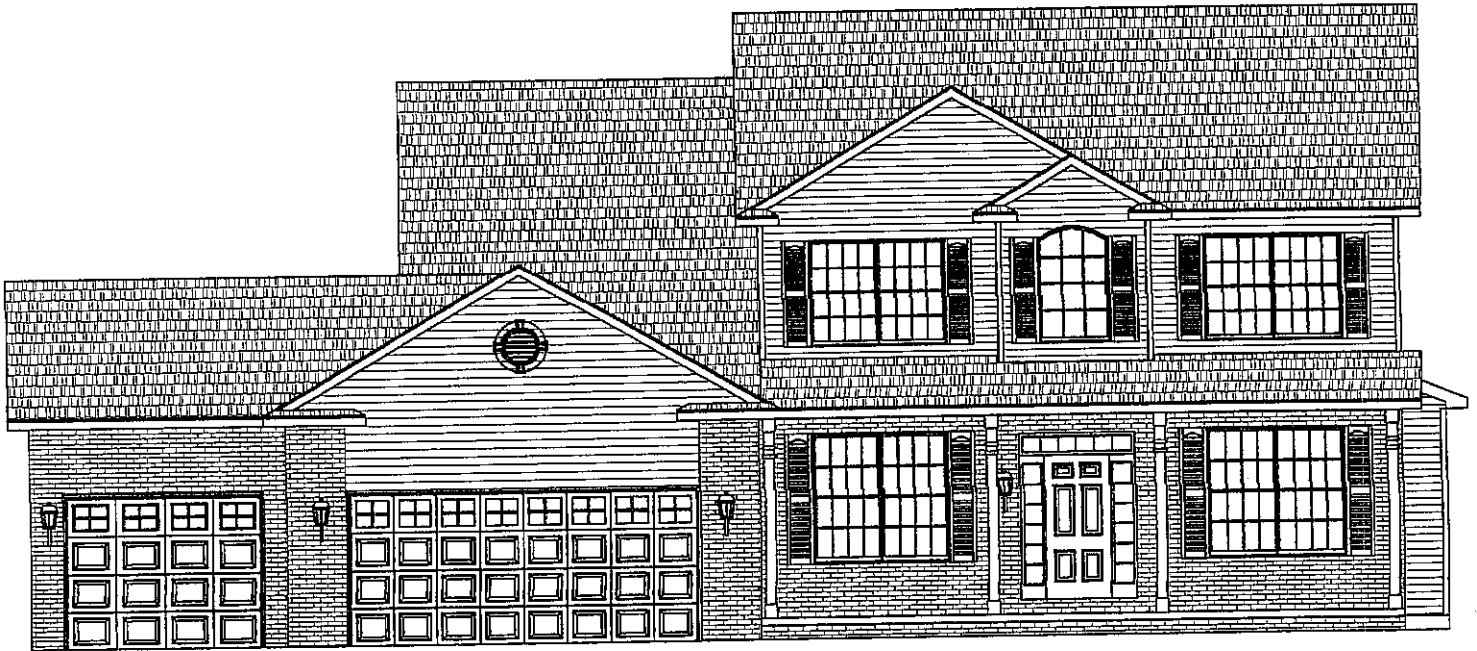


THE **ELIZABETH 2476**
AT THE CHATEAU

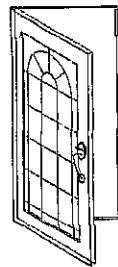


ELEVATION "A"

STANDARD FEATURES

2476 SQUARE FEET
4 BEDROOMS
2-1/2 BATHROOMS

Welcome Home to Quality



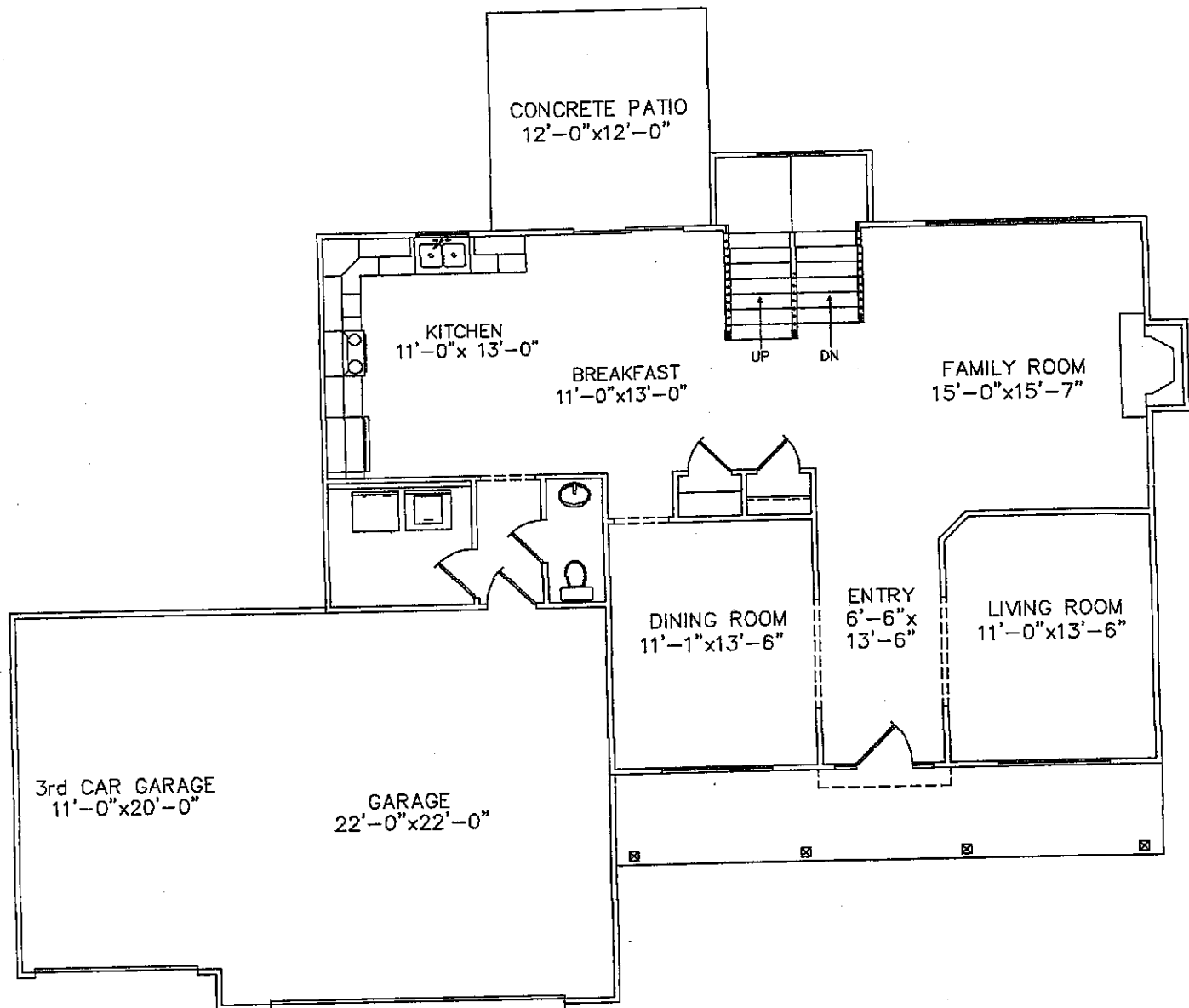
BRADY

H O M E S

Bloomington, IL

Due to the continual improvement of the designs of Brady Homes, we reserve the right to revise and modify home plans without notice. As a result of this evolutionary process of continual improvement, Brady Homes is able to offer more desirable home plans and features.

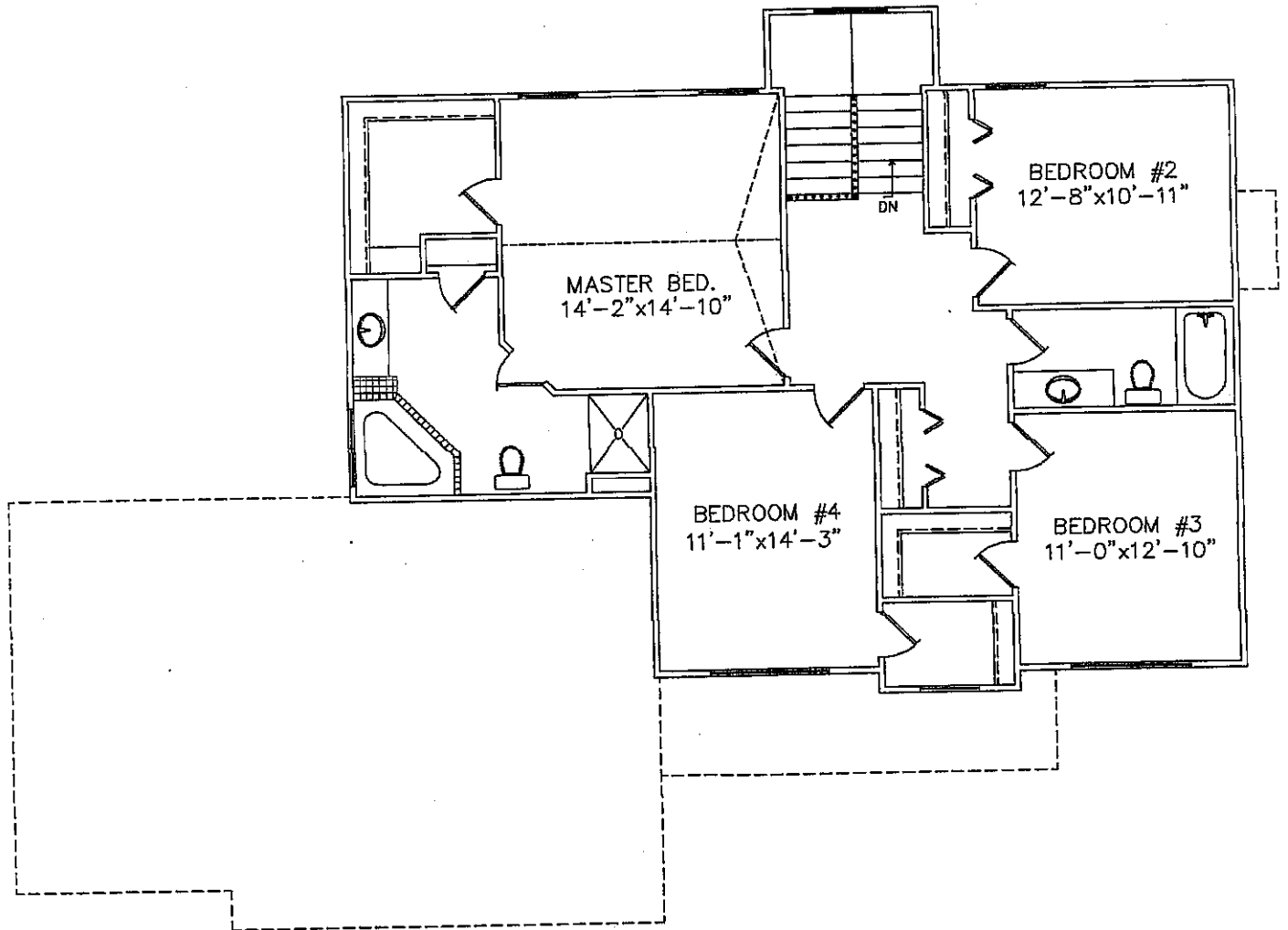
ELIZABETH 2476 -STANDARD FIRST FLOOR PLAN



FIRST FLOOR PLAN

1/8" = 1'-0"
9' CEILING HT.

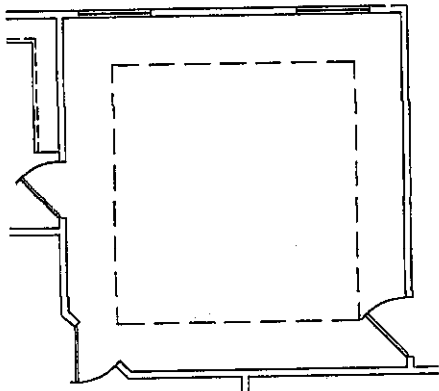
ELIZABETH 2476 -STANDARD SECOND FLOOR PLAN



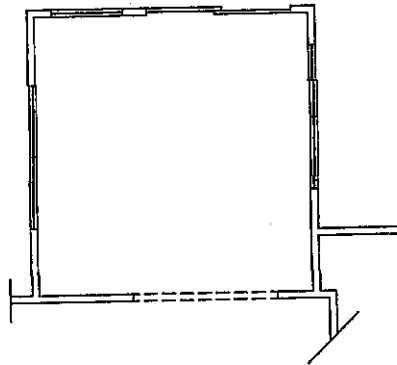
SECOND FLOOR PLAN

1/8" = 1'-0"
8' CEILING HT.

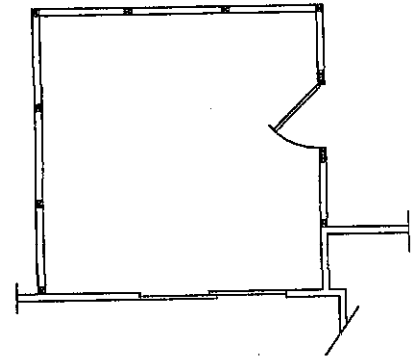
ELIZABETH 2476 -OPTIONAL STRUCTURAL FEATURES



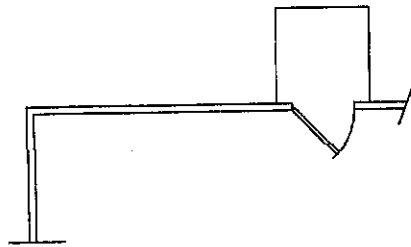
OPTION-RAISED TRAY CEILING
IN MASTER BEDROOM



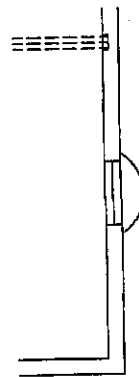
OPTION-4 SEASON ROOM



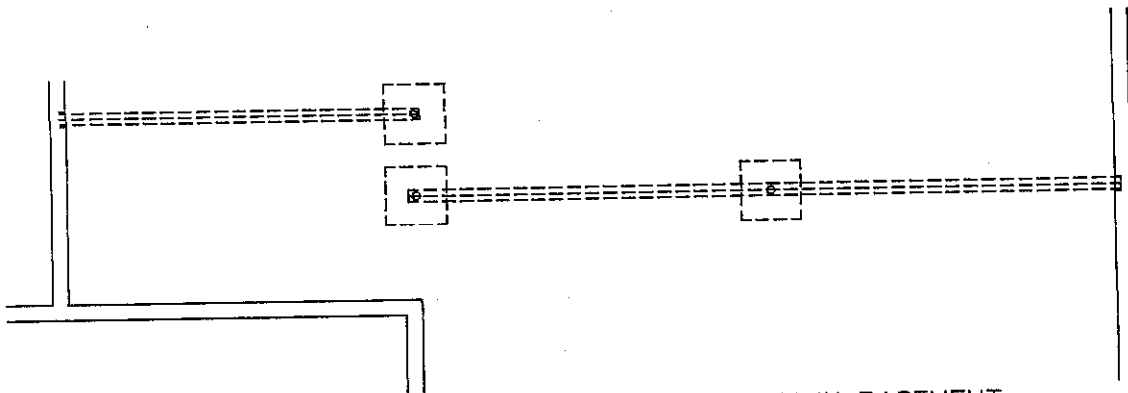
OPTION-SCREENED-IN PORCH



OPTION-GARAGE SERVICE DOOR

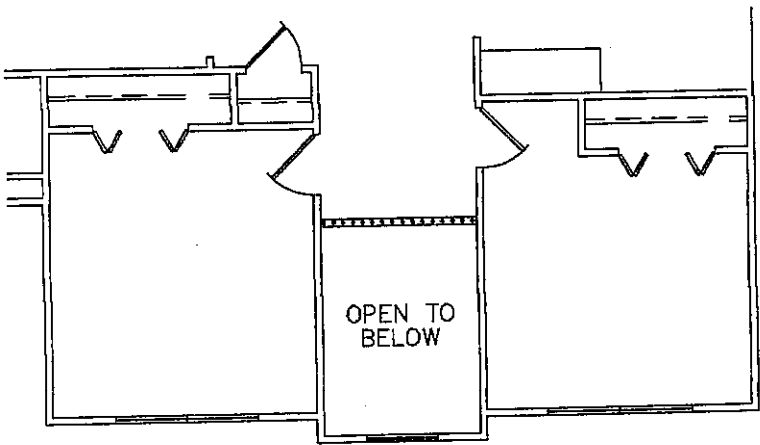


OPTION-STANDARD WINDOW
IN BASEMENT

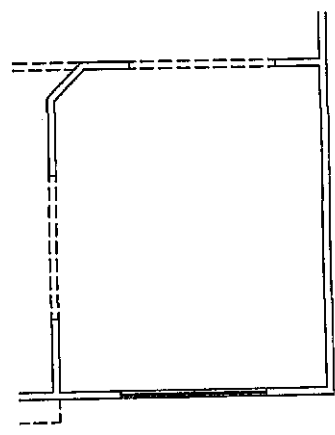


OPTION-STEEL BEAM IN BASEMENT

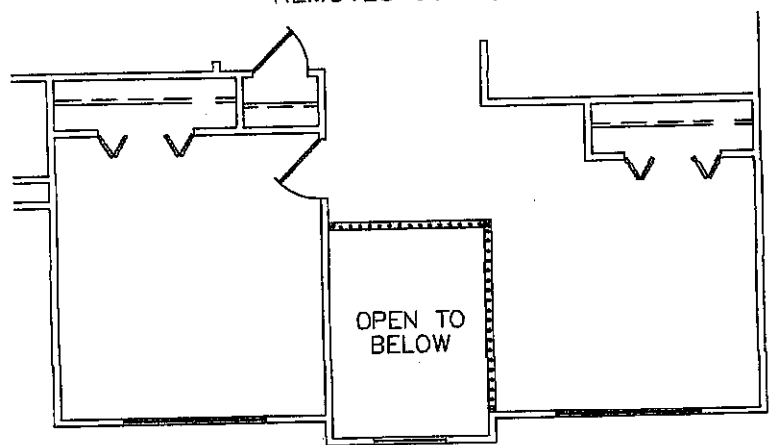
ELIZABETH 2476 -OPTIONAL STUDIO FEATURES



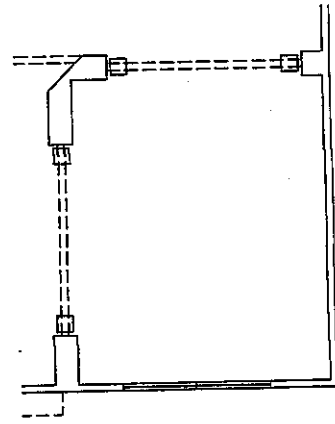
OPTION-FOYER OPEN TO BELOW
REMOVES 60 SQ. FT.



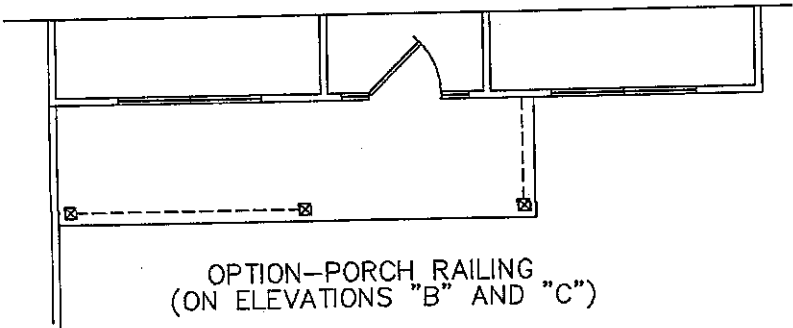
OPTION 6/O OPENING
FROM LIVING RM TO FAMILY RM



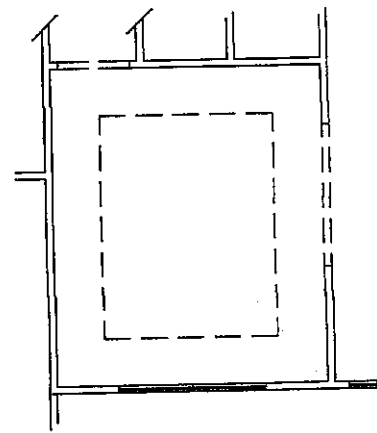
OPTION-LOFT BEDROOM #3
REMOVES 60 SQ. FT.



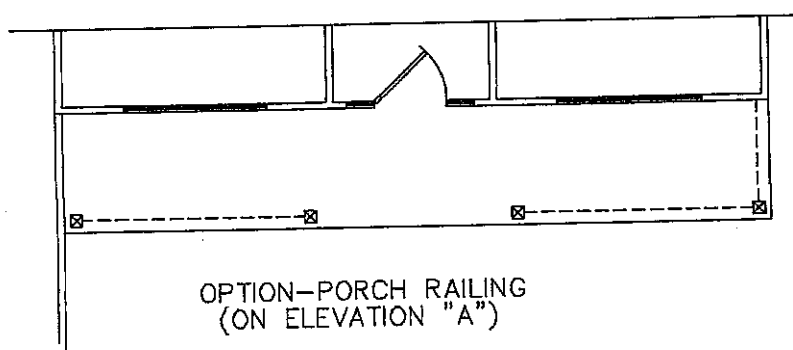
OPTION 8/O OPENING W/ PILLARS
FROM LIVING RM TO FAMILY RM



OPTION-PORCH RAILING
(ON ELEVATIONS "B" AND "C")

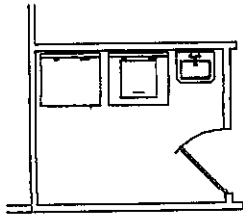


OPTION-DROPPED TRAY
CEILING IN DINING ROOM

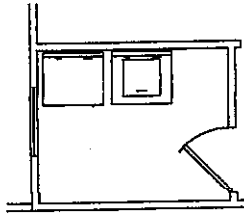


OPTION-PORCH RAILING
(ON ELEVATION "A")

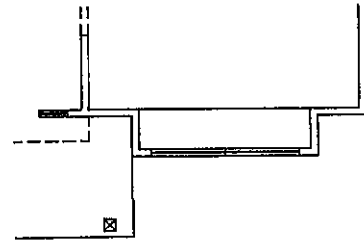
ELIZABETH 2476 -OPTIONAL STUDIO FEATURES



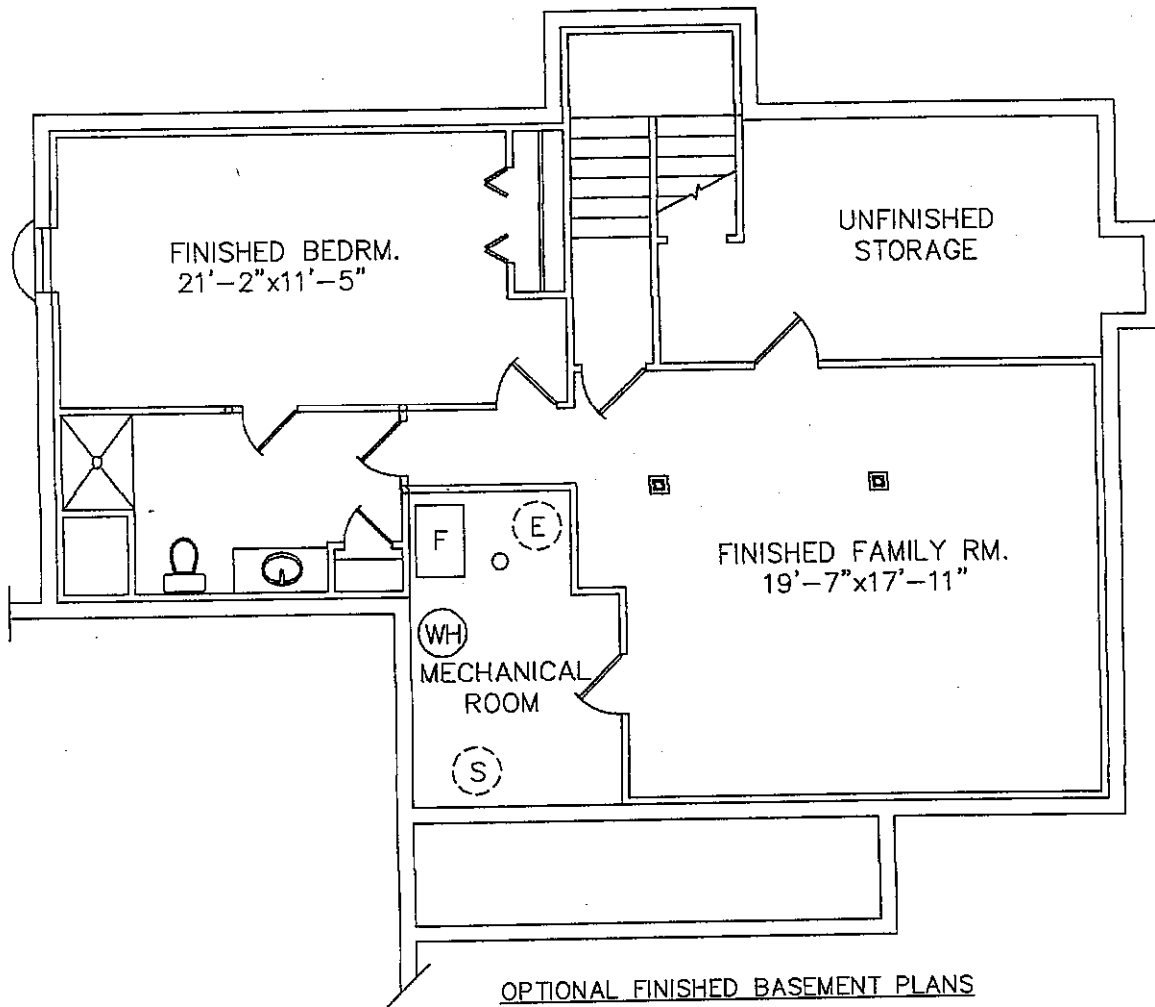
OPTION- LAUNDRY TUB
IN LAUNDRY ROOM



OPTION-3436 WINDOW
IN LAUNDRY ROOM



OPTION-WINDOW SEAT



OPTIONAL FINISHED BASEMENT PLANS

- OPTION #1-FINISHED FAMILY ROOM 370 SQ. FT.
- OPTION #2-ADD FINISHED BATHROOM 500 SQ. FT.
- OPTION #3-ADD FINISHED BEDROOM 752 SQ. FT.

SUMP PUMP AND/OR EJECTOR PIT LOCATED
IN UNFINISHED AREA PER INDIVIDUAL LOT