

THE FAIRFIELD 2303
AT THE CHATEAU

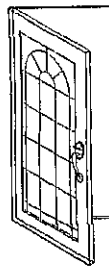


ELEVATION "A"

STANDARD FEATURES

2303 SQUARE FEET
4 BEDROOMS
2-1/2 BATHROOMS

Welcome Home to Quality



BRADY

H O M E S

Bloomington, IL

Due to the continual improvement of the designs of Brady Homes, we reserve the right to revise and modify home plans without notice. As a result of this evolutionary process of continual improvement, Brady Homes is able to offer more desirable home plans and features.

FAIRFIELD 2303 - ELEVATION OPTIONS

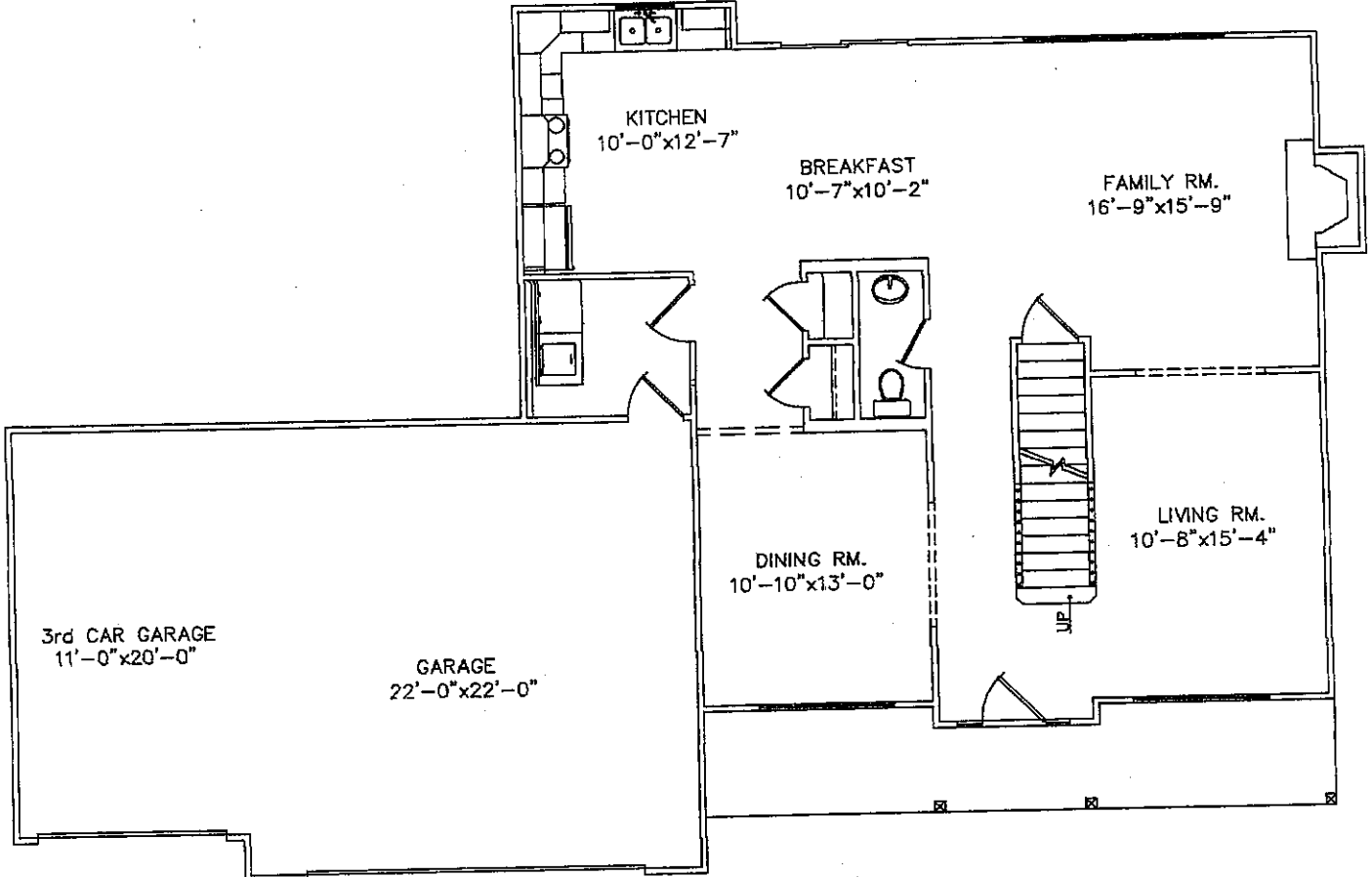


ELEVATION "B"



ELEVATION "C"

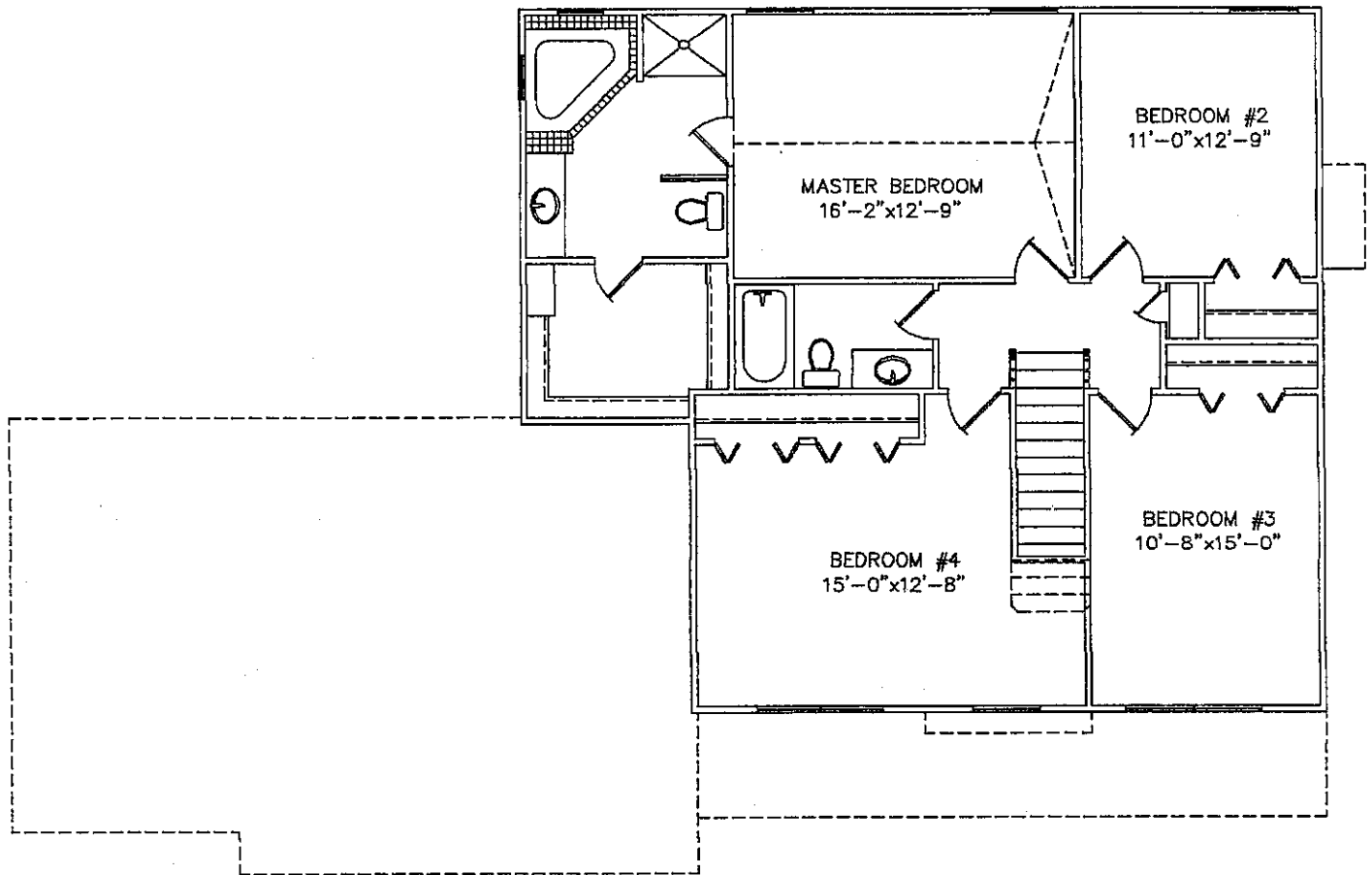
FAIRFIELD 2303 -STANDARD FIRST FLOOR PLAN



FIRST FLOOR PLAN

1/8" = 1'-0"
9' CEILING HT.

FAIRFIELD 2303 -STANDARD SECOND FLOOR PLAN

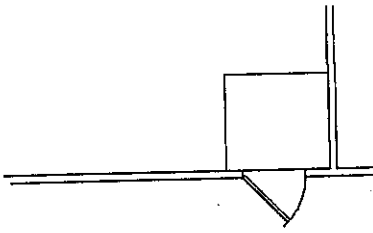


SECOND FLOOR PLAN

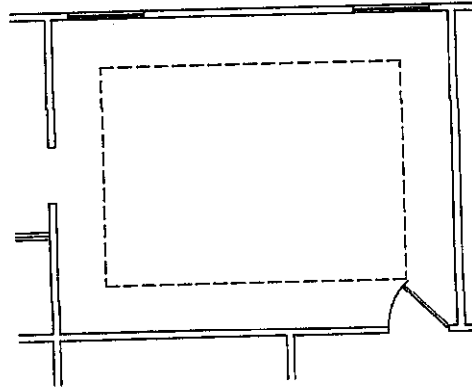
1/8" = 1'-0"

8' CEILING HT.

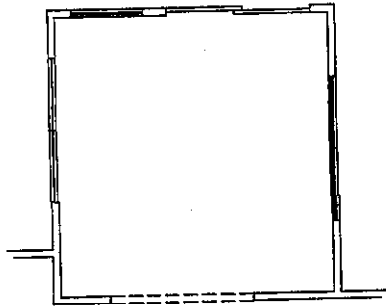
FAIRFIELD 2303 -OPTIONAL STRUCTURAL FEATURES



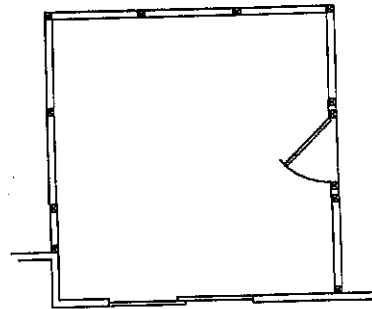
OPTION-GARAGE SERVICE DOOR



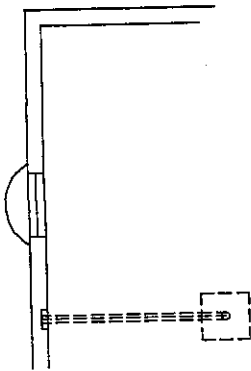
OPTION-RAISED TRAY CEILING
IN MASTER BEDROOM



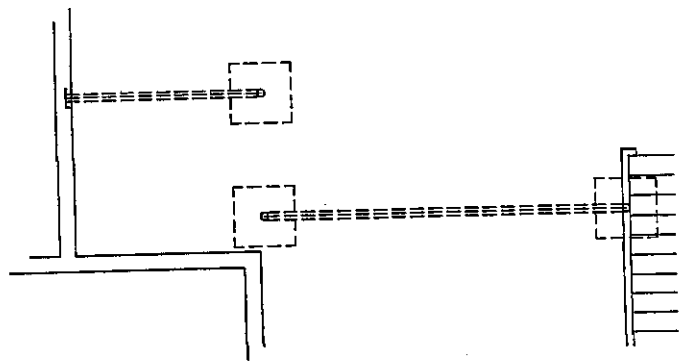
OPTION-12'x12' 4-SEASON ROOM



OPTION-12'x12' SCREENED-IN PORCH

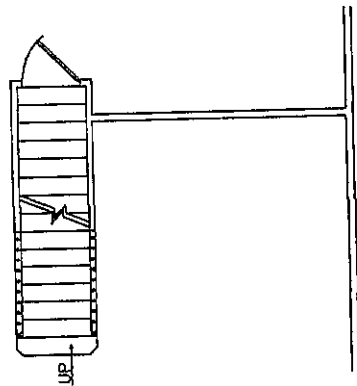


OPTION-STANDARD BASEMENT WINDOW

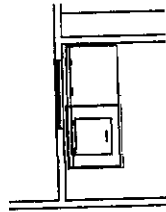


OPTION-STEEL BEAM IN BASEMENT

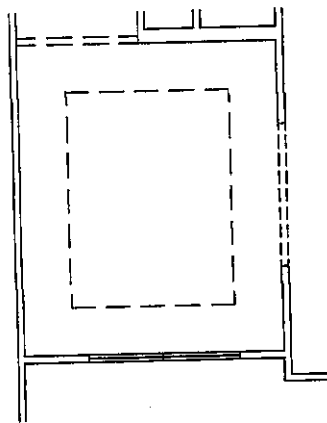
FAIRFIELD 2303 -OPTIONAL STUDIO FEATURES



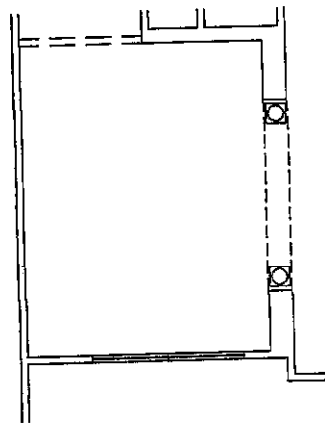
OPTION-CLOSED LIVING ROOM



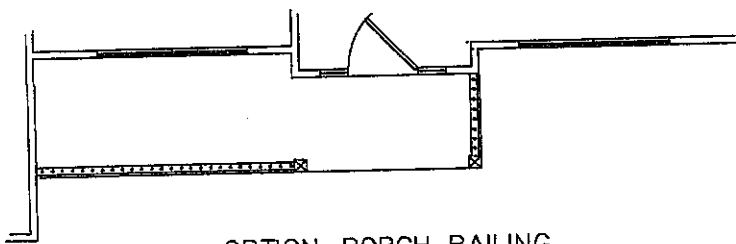
OPTION-3436 WINDOW
IN LAUNDRY ROOM



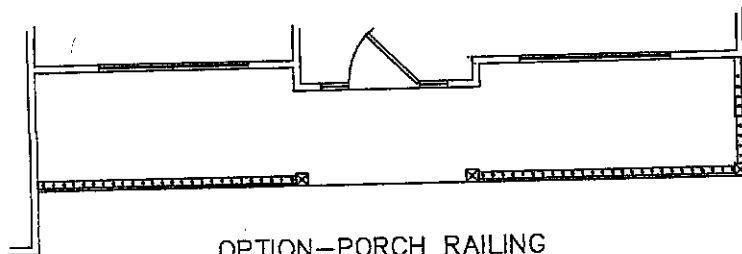
OPTION-DROPPED TRAY
CEILING IN DINING ROOM



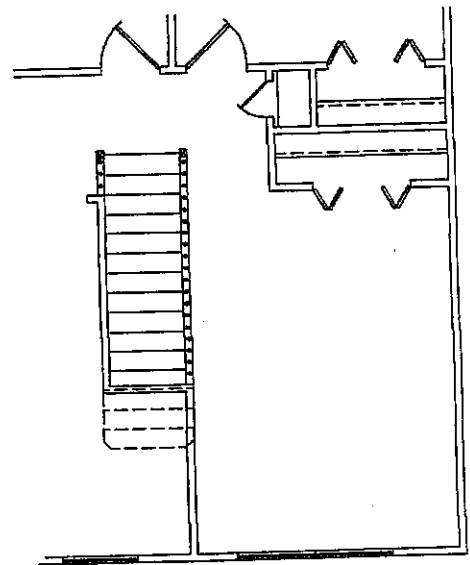
OPTION-DINING RM OPG
WITH PILLARS



OPTION-PORCH RAILING
(ON ELEVATION "B")

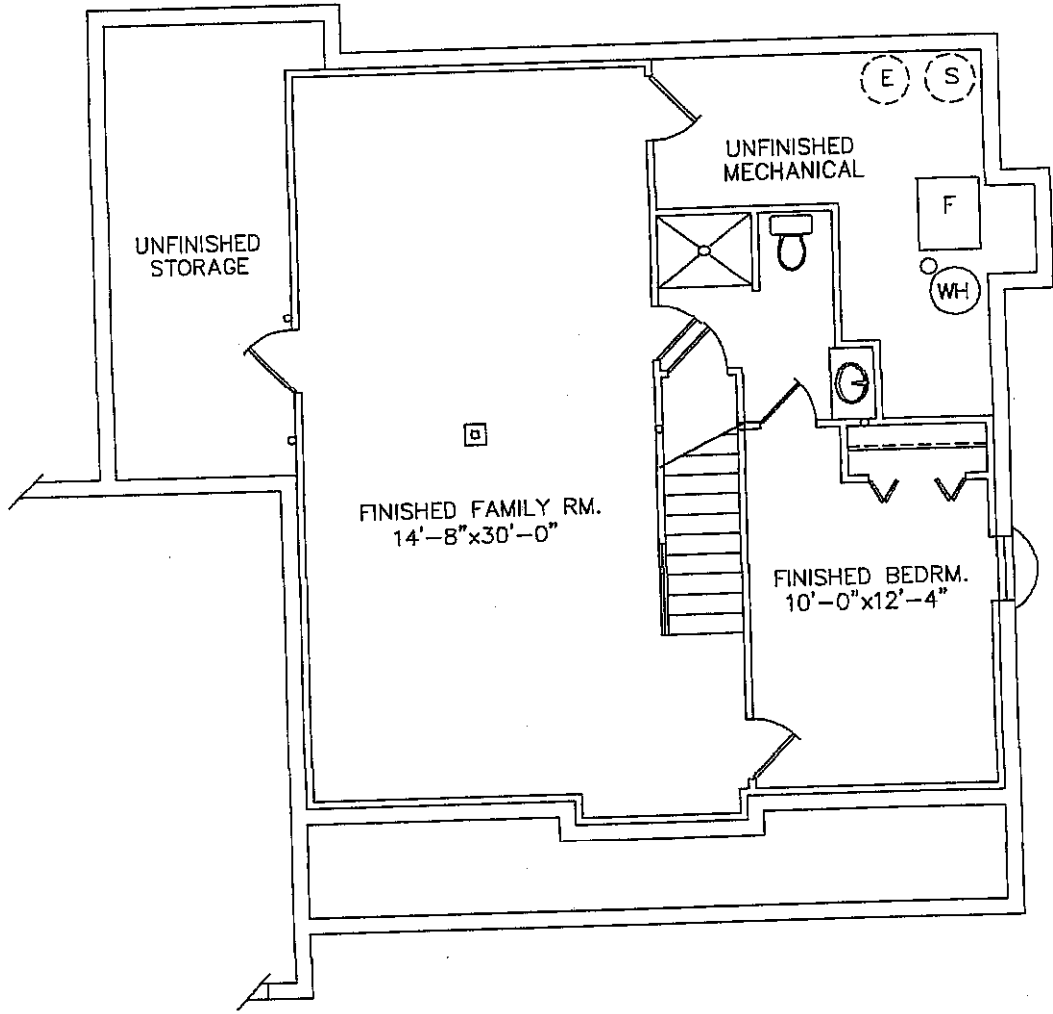


OPTION-PORCH RAILING
(ON ELEVATIONS "A" AND "C")



OPTION-LOFT BEDROOM #3

FAIRFIELD 2303 -OPTIONAL STUDIO FEATURES



OPTION-FINISHED BASEMENT

- OPTION #1- FINISHED FAMILY ROOM 490 SQ. FT.
- OPTION #2- ADD FINISHED BATHROOM 554 SQ. FT.
- OPTION #3- ADD FINISHED BEDROOM 762 SQ. FT.

SUMP PUMP AND/OR EJECTOR PIT LOCATED
IN UNFINISHED AREA PER INDIVIDUAL LOT