

THE **GLENMORE 2269**
AT THE CHATEAU



ELEVATION "A"

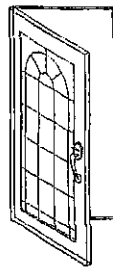
STANDARD FEATURES

2269 SQUARE FEET

4 BEDROOMS

2-1/2 BATHROOMS

Welcome Home to Quality



BRADY

H O M E S

Bloomington, IL

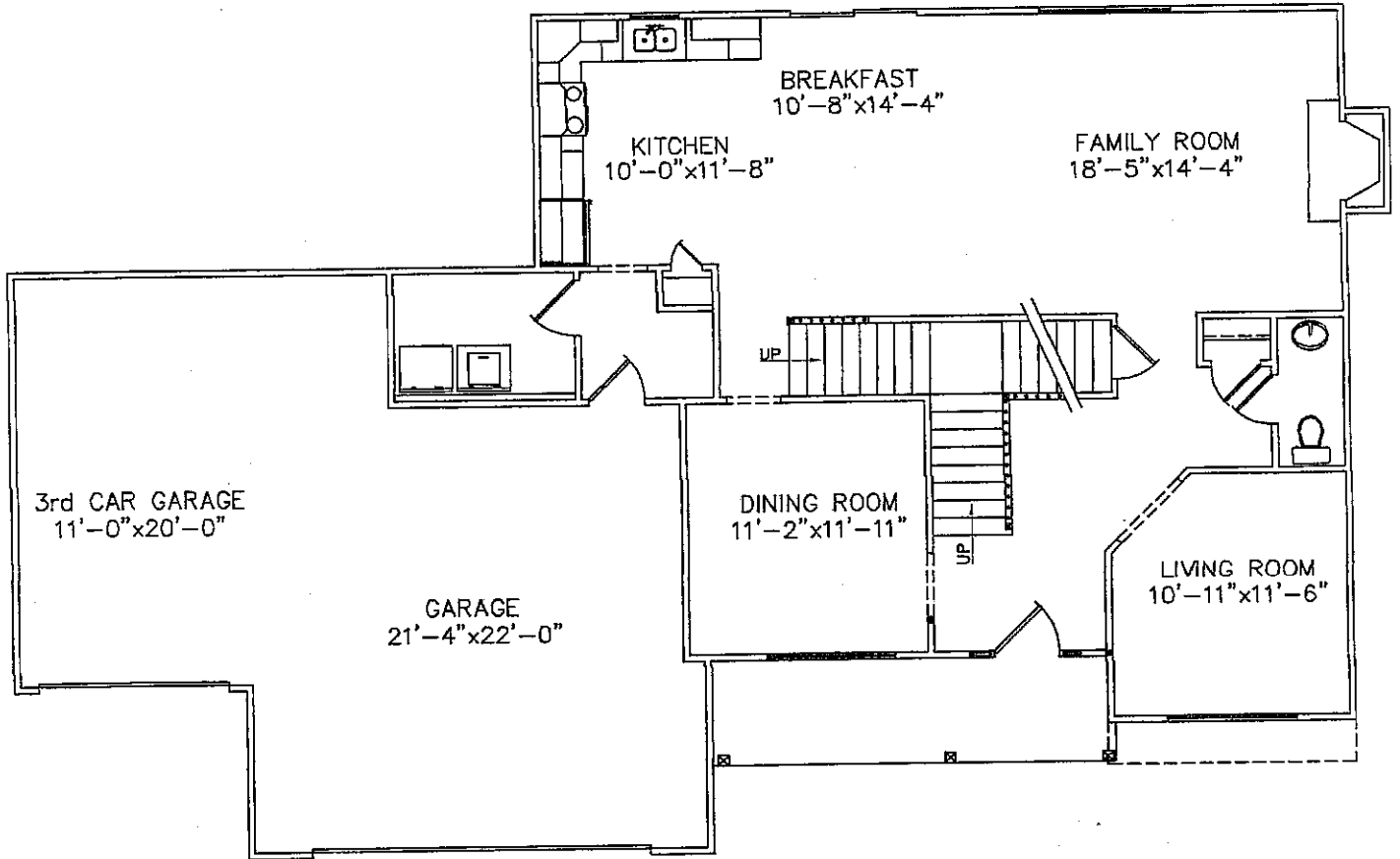
Due to the continual improvement of the designs of Brady Homes, we reserve the right to revise and modify home plans without notice. As a result of this evolutionary process of continual improvement, Brady Homes is able to offer more desirable home plans and features.

GLENMORE 2269 - ELEVATION OPTIONS



ELEVATION "B"

GLENMORE 2269 -STANDARD FIRST FLOOR PLAN

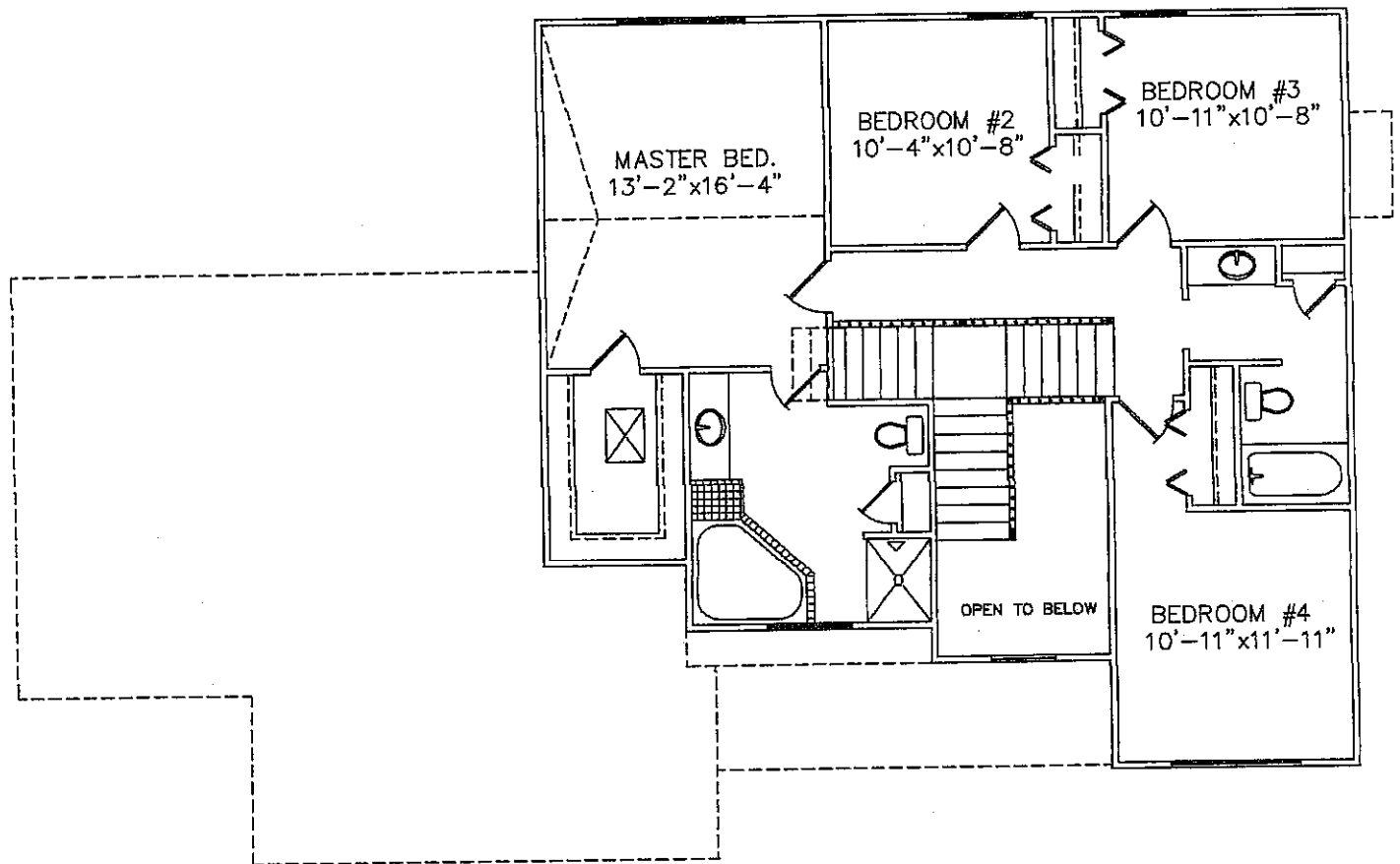


FIRST FLOOR PLAN

1/8" = 1'-0"

9'-0" CLG. HT.

GLENMORE 2269 -STANDARD SECOND FLOOR PLAN

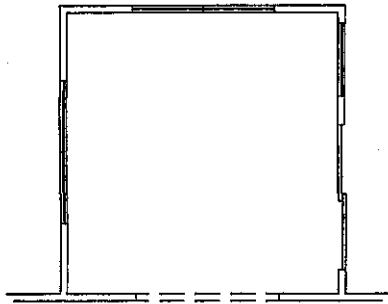


SECOND FLOOR PLAN

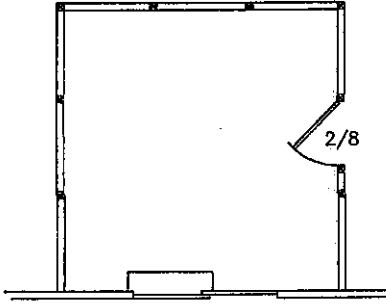
1/8" = 1'-0"

8'-0" CLG. HT.

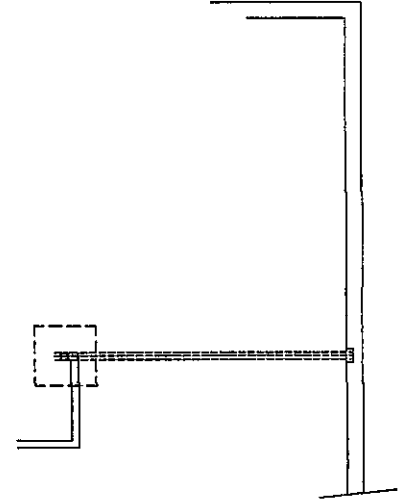
GLENMORE 2269 -OPTIONAL STRUCTURAL FEATURES



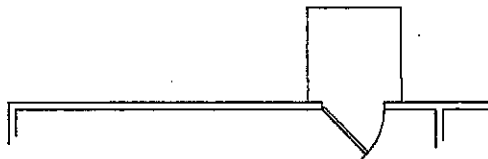
OPTION-12'x12' 4-SEASON RM.



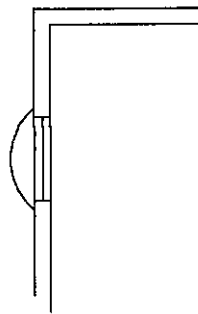
OPTION-12'x12' SCREEN PORCH



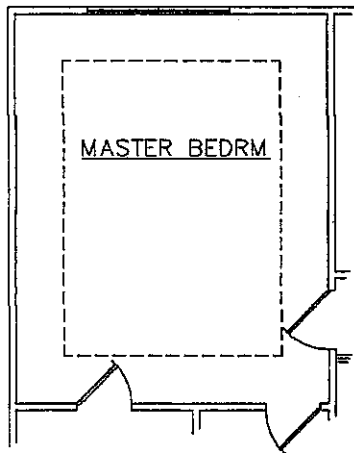
OPTION-STEEL BEAM IN BASEMENT



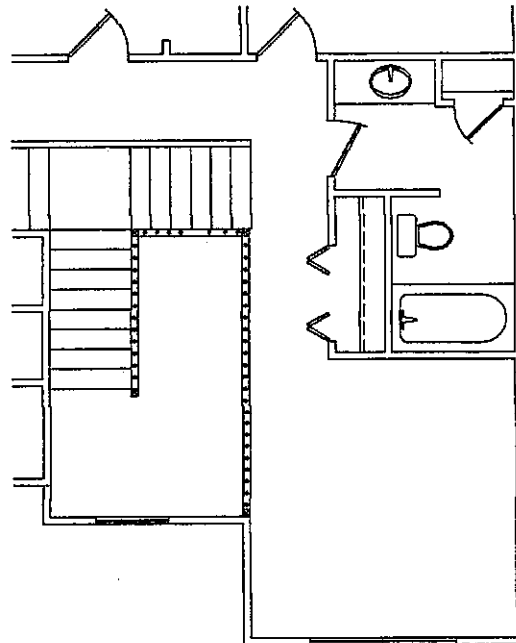
OPTION-GARAGE SERVICE DOOR



OPTION-STANDARD
BASEMENT WINDOW

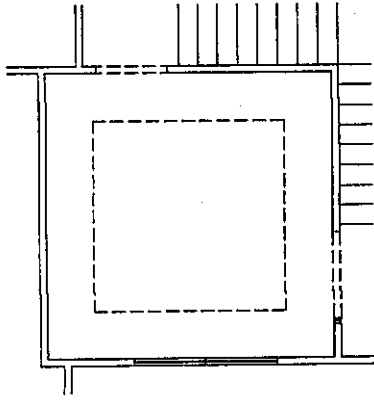


OPTION-RAISED TRAY CEILING
IN MASTER BEDROOM

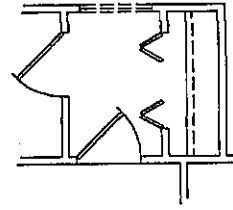


OPTION-LOFT BEDROOM #4

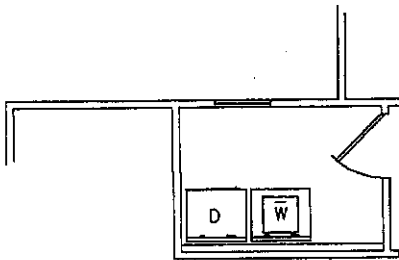
GLENMORE 2269 -OPTIONAL STUDIO FEATURES



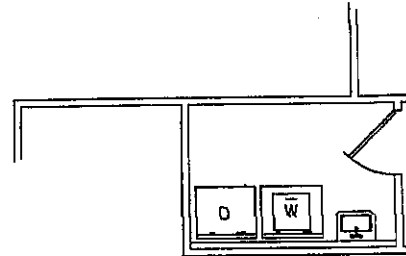
OPTION-DROPPED TREY
CEILING IN DINING ROOM



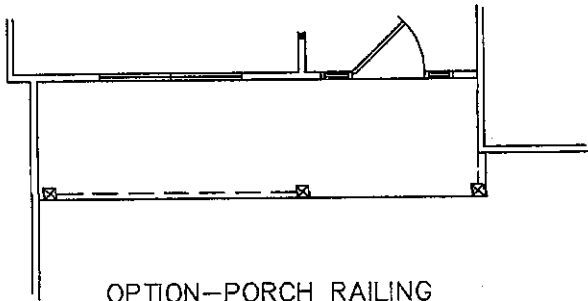
OPTION-CLOSET IN MUD ROOM



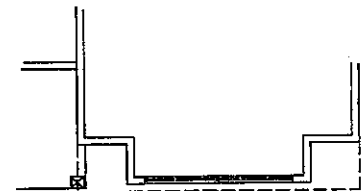
OPTION-3636 WINDOW
IN LAUNDRY ROOM



OPTION-LAUNDRY TUB
IN LAUNDRY ROOM

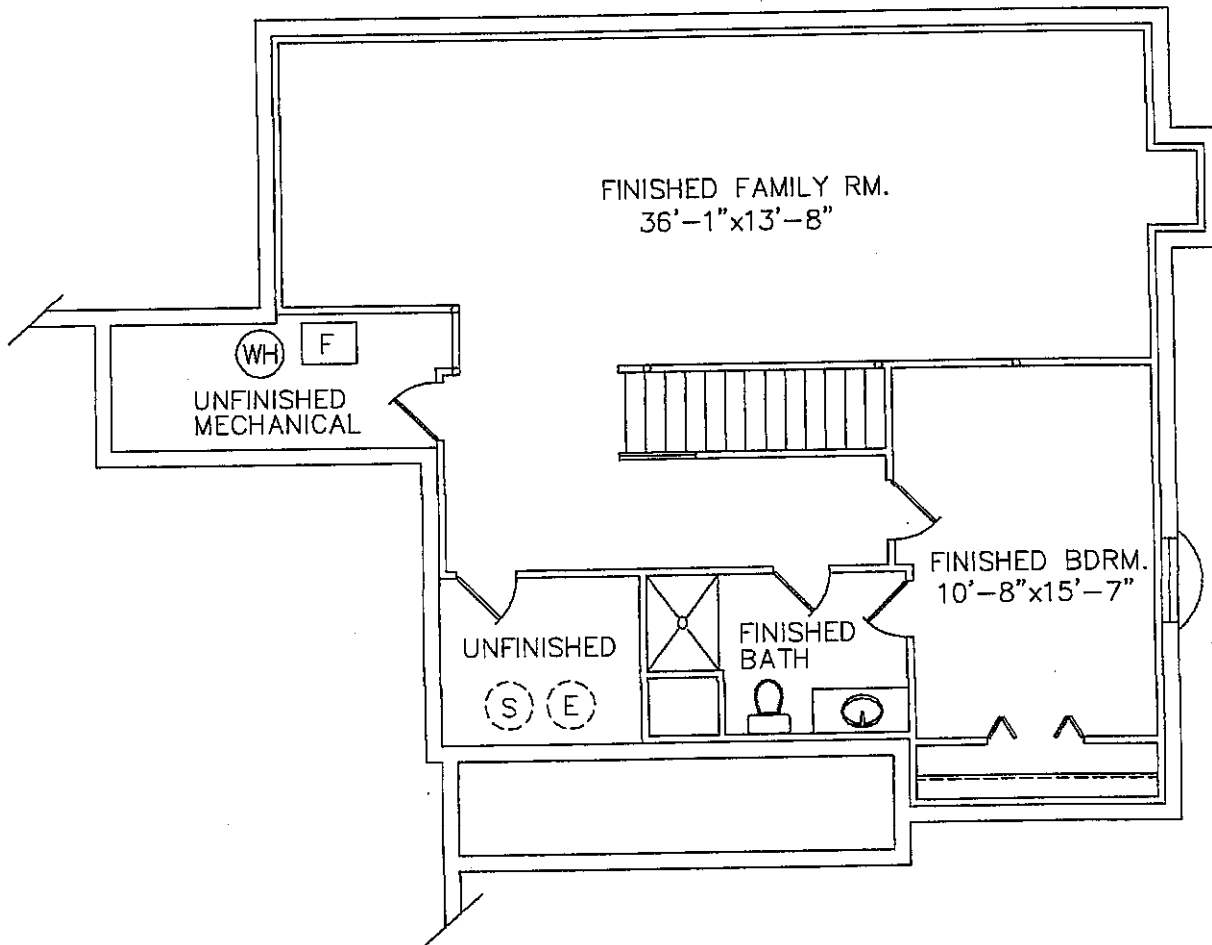


OPTION-PORCH RAILING



OPTION-WINDOW SEAT IN DINING

GLENMORE 2269 -OPTIONAL STUDIO FEATURES



OPTION-FINISHED BASEMENT PLAN

- OPTION #1: FINISHED FAMILY 516 SQ. FT.
- OPTION #2: ADD FINISHED BATHROOM 684 SQ. FT.
- OPTION #2: ADD FINISHED BEDROOM 884 SQ. FT.

SUMP PUMP AND/OR EJECTOR PIT LOCATED
IN UNFINISHED AREA PER INDIVIDUAL LOT