

THE **MERLOT 3046**
AT THE CHATEAU

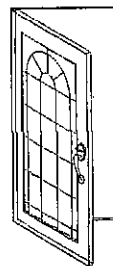


ELEVATION "A"

STANDARD FEATURES

3046 SQUARE FEET
4 BEDROOMS
2-1/2 BATHROOMS

Welcome Home to Quality



BRADY

H O M E S

Bloomington, IL

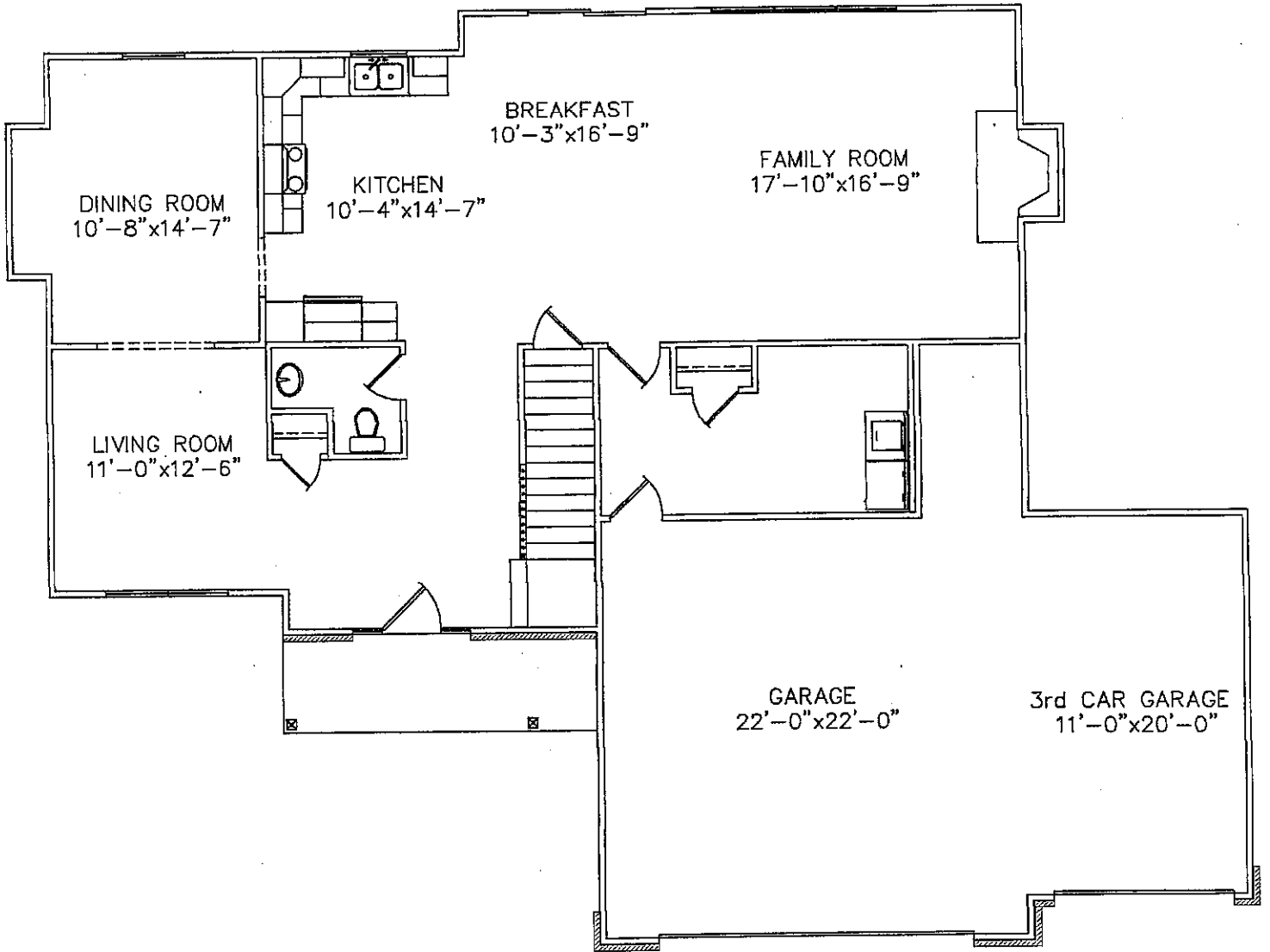
Due to the continual improvement of the designs of Brady Homes, we reserve the right to revise and modify home plans without notice. As a result of this evolutionary process of continual improvement, Brady Homes is able to offer more desirable home plans and features.

MERLOT 3046 - ELEVATION OPTIONS



ELEVATION "B"

MERLOT 3046 -STANDARD FIRST FLOOR PLAN

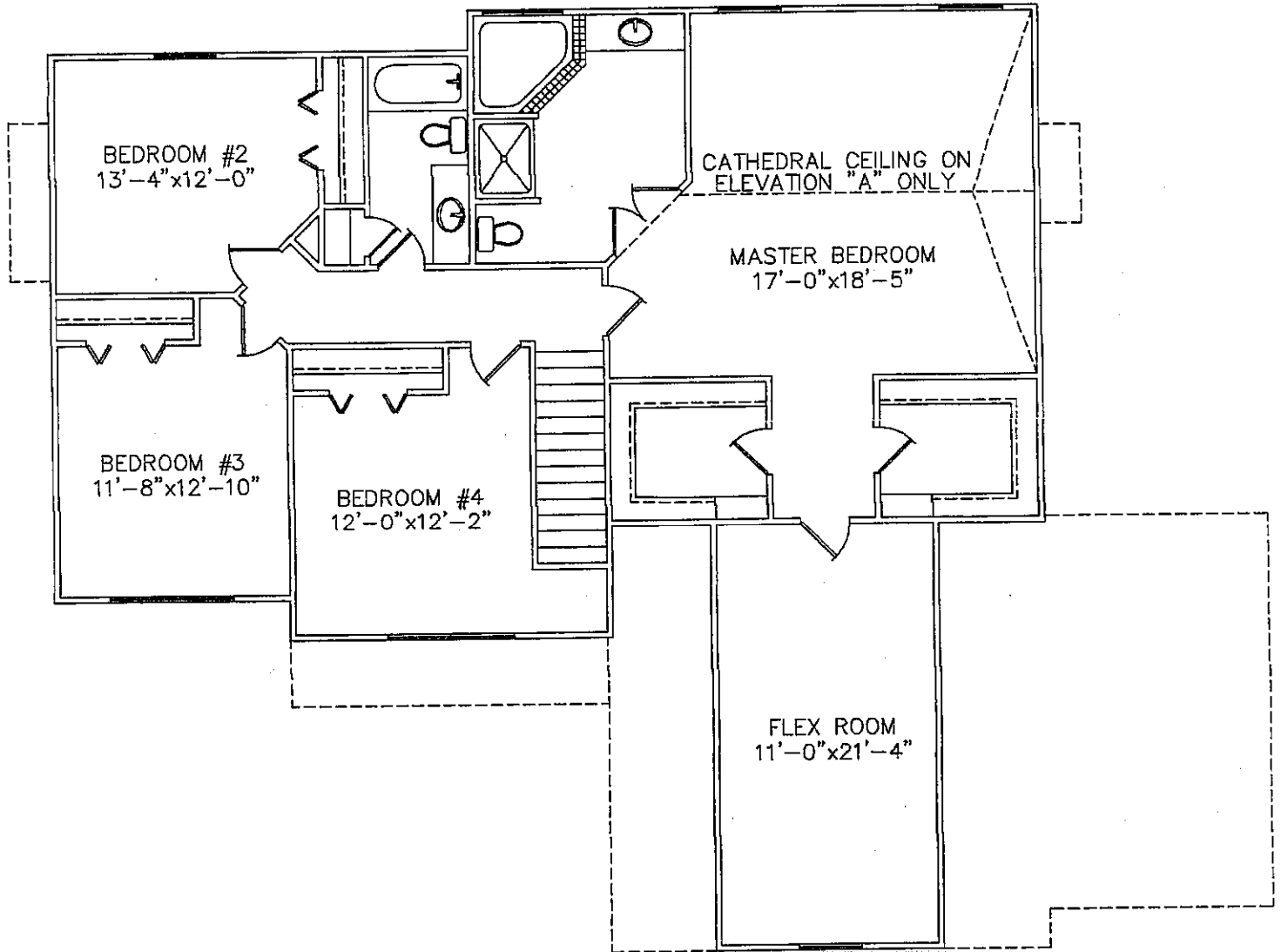


FIRST FLOOR PLAN

1/8" = 1'-0"

9' CEILING HT.

MERLOT 3046 -STANDARD SECOND FLOOR PLAN

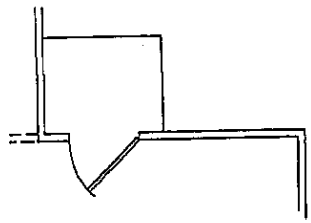


SECOND FLOOR PLAN

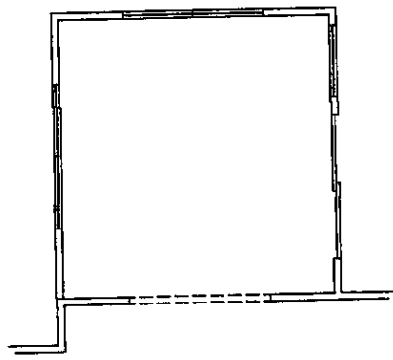
1/8" = 1'-0"

8' CEILING HT.

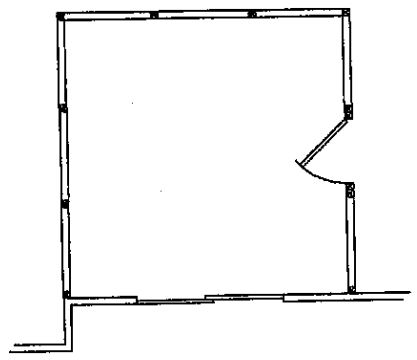
MERLOT 3046 -OPTIONAL STRUCTURAL FEATURES



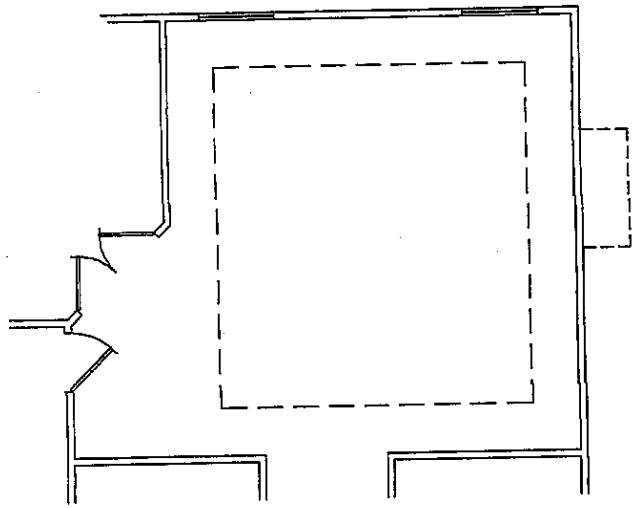
OPTION-GARAGE SERVICE DOOR FOR OPTIONAL 3-CAR



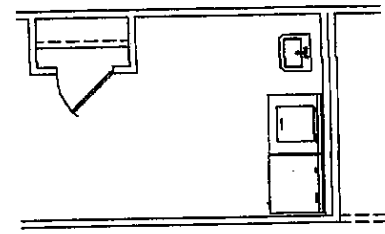
OPTION-4 SEASON ROOM



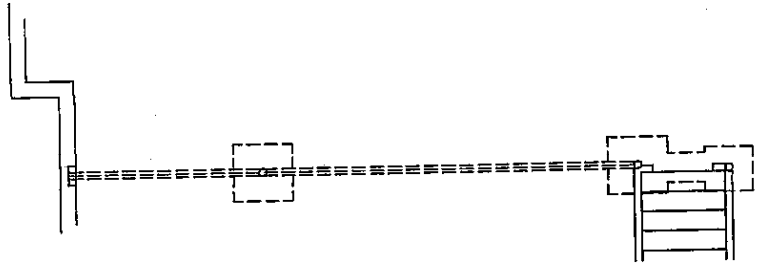
OPTION-SCREENED-IN PORCH



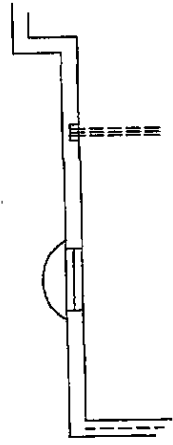
OPTION-RAISED TREY CEILING IN MASTER BEDROOM (AVAILABLE ON ELEVATION "A" AND "B")



OPTION-LAUNDRY TUB

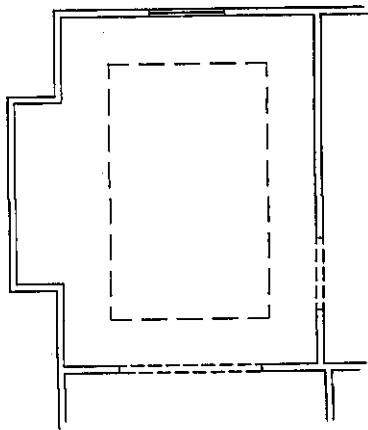


OPTION-STEEL BEAM IN BASEMENT

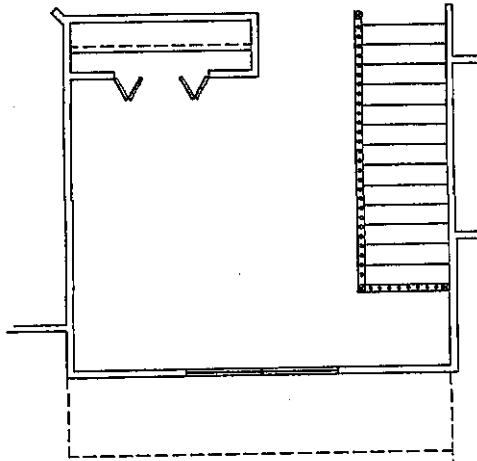


OPTION-STANDARD WINDOW IN BASEMENT

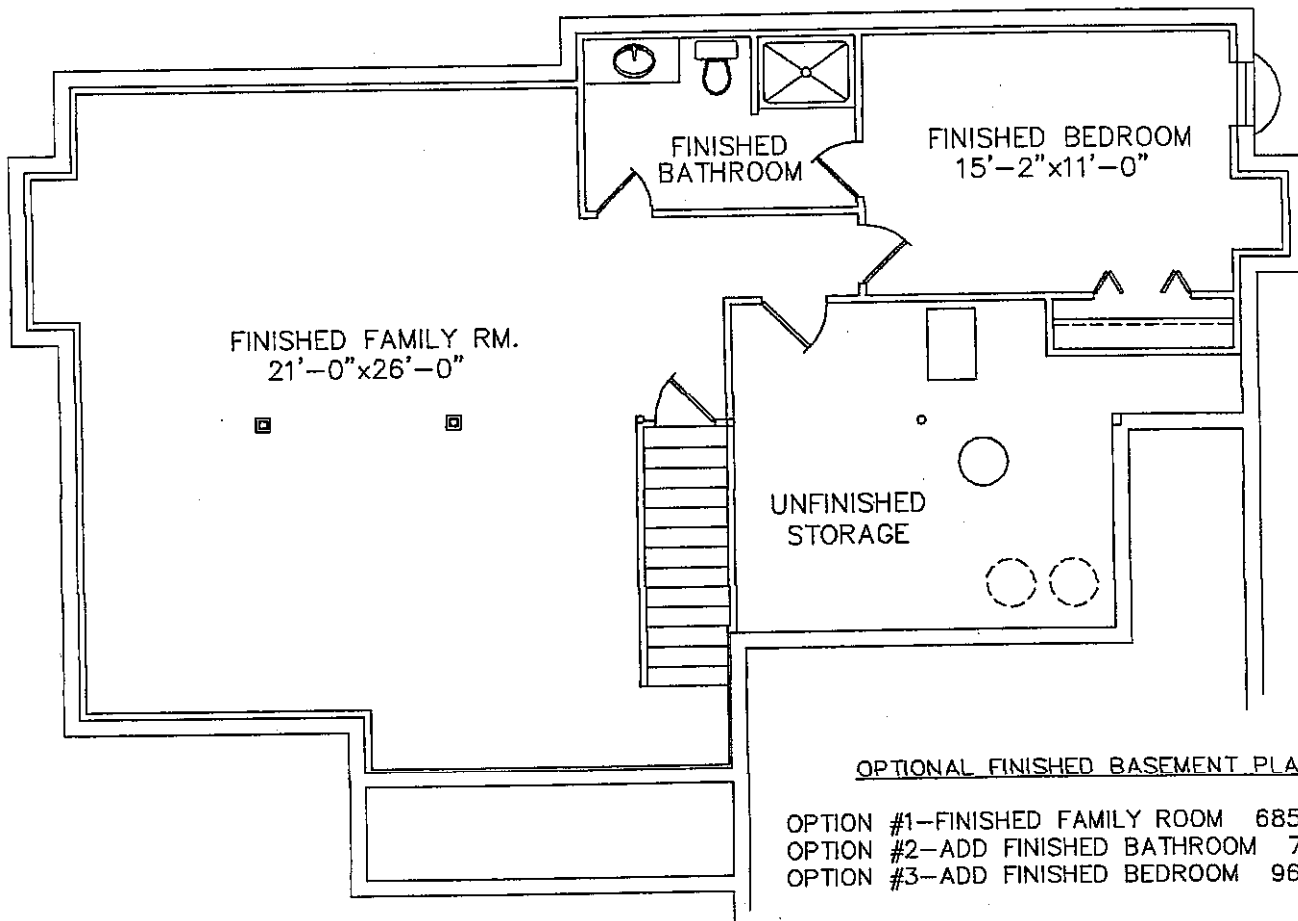
MERLOT 3046 -OPTIONAL STUDIO FEATURES



OPTION-DROPPED TREY
CEILING IN DINING ROOM



OPTION-LOFT BEDROOM #4



OPTIONAL FINISHED BASEMENT PLANS

- OPTION #1-FINISHED FAMILY ROOM 685 SQ. FT.
- OPTION #2-ADD FINISHED BATHROOM 775 SQ. FT.
- OPTION #3-ADD FINISHED BEDROOM 965 SQ. FT.

SUMP PUMP AND/OR EJECTOR PIT LOCATED
IN UNFINISHED AREA PER INDIVIDUAL LOT