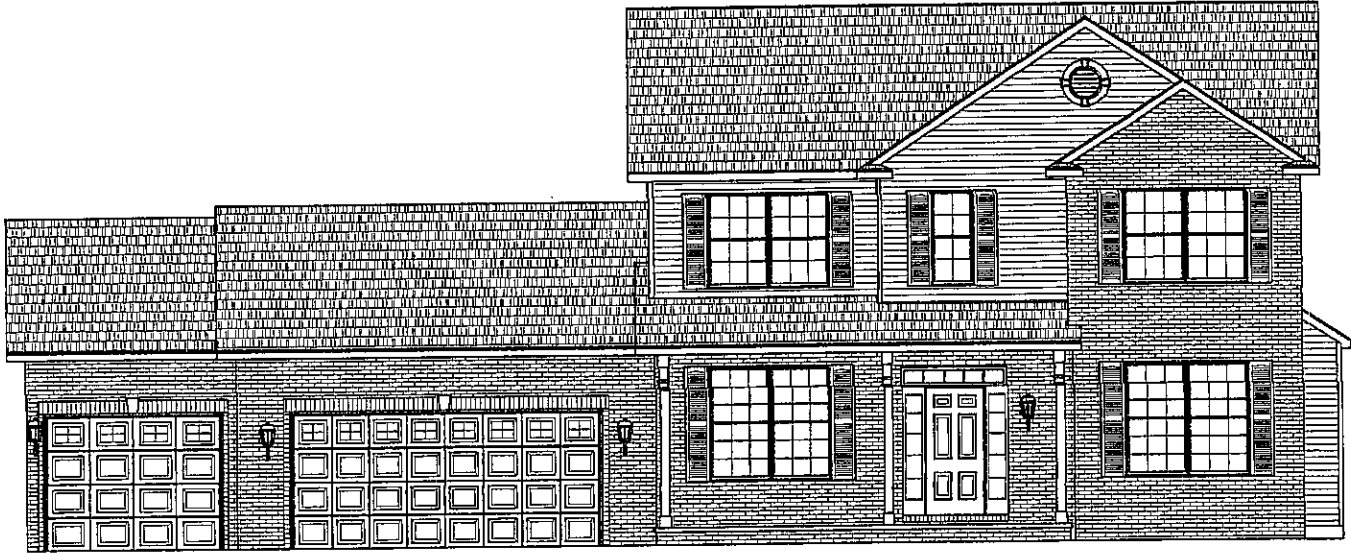


THE WESTMONT 2419  
AT THE CHATEAU

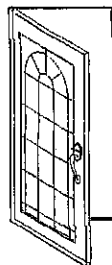


ELEVATION "A"

STANDARD FEATURES

2419 SQUARE FEET  
4 BEDROOMS  
2-1/2 BATHROOMS

*Welcome Home to Quality*



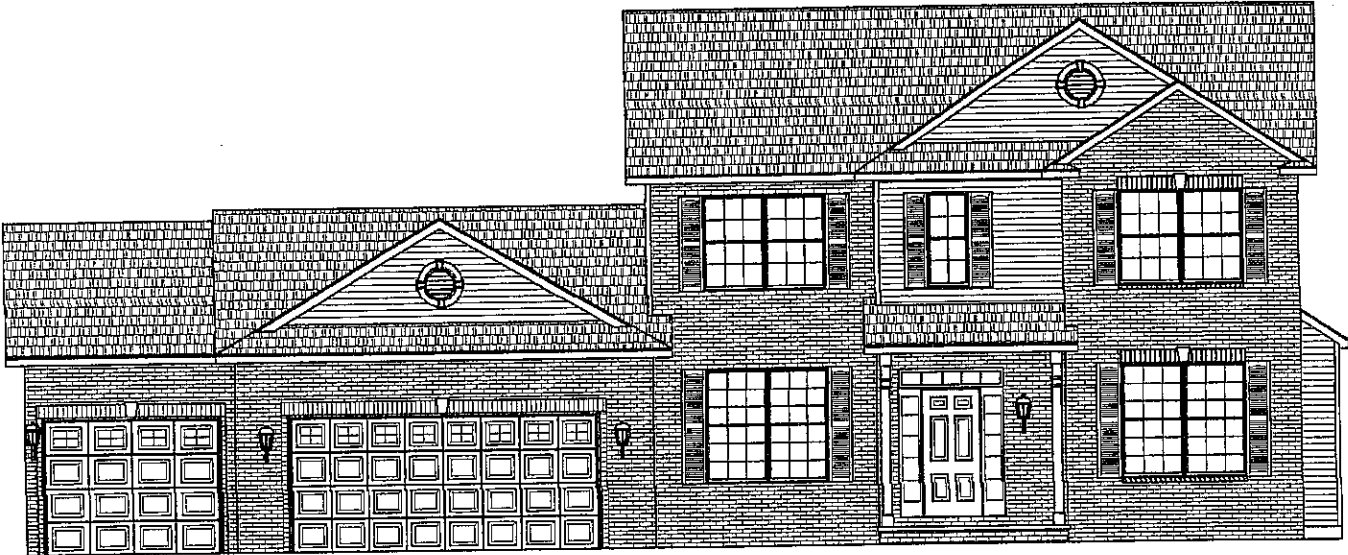
**BRADY**

**H O M E S**

Bloomington, IL

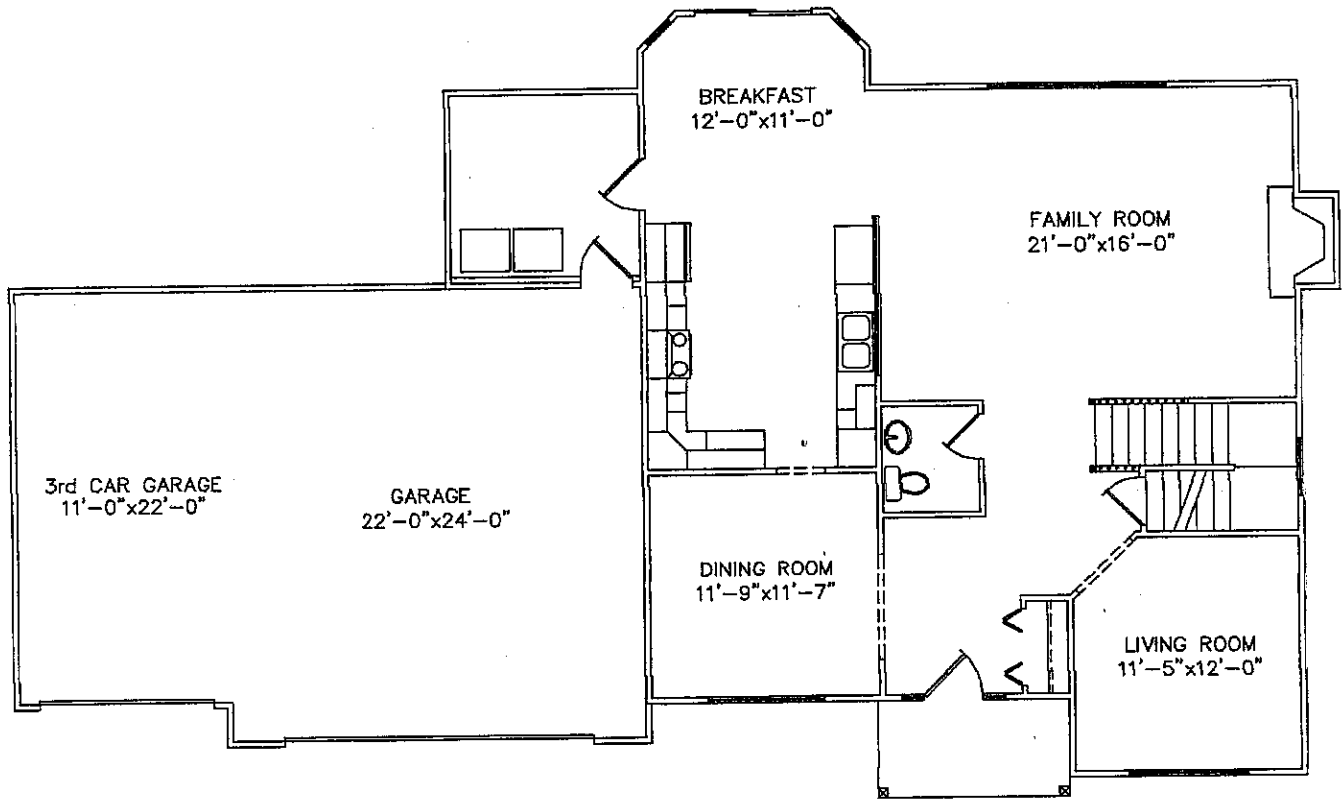
Due to the continual improvement of the designs of Brady Homes, we reserve the right to revise and modify home plans without notice. As a result of this evolutionary process of continual improvement, Brady Homes is able to offer more desirable home plans and features.

# WESTMONT 2419 - ELEVATION OPTIONS



ELEVATION "B"

# WESTMONT 2419 -STANDARD FIRST FLOOR PLAN

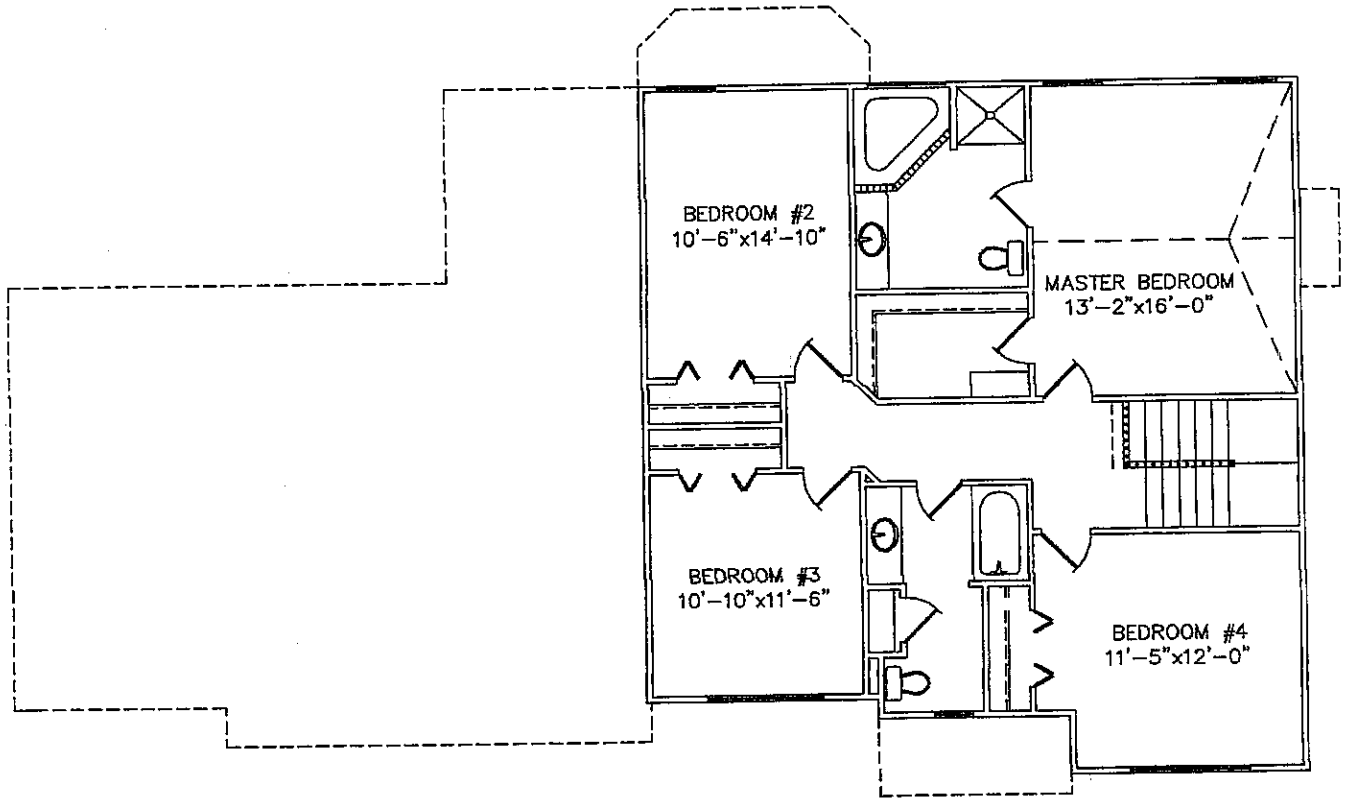


## FIRST FLOOR PLAN

1/8" = 1'-0"

9'-0" CLG. HT.

# WESTMONT 2419 -STANDARD SECOND FLOOR PLAN

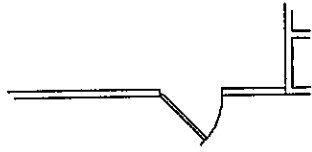


## SECOND FLOOR PLAN

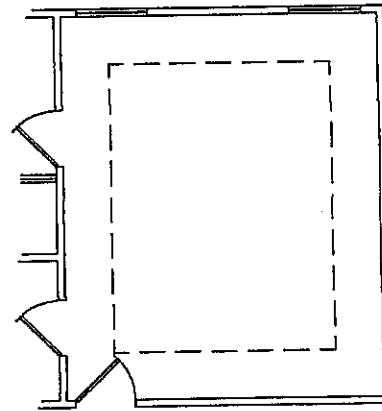
1/8" = 1'-0"

8'-0" CLG. HT.

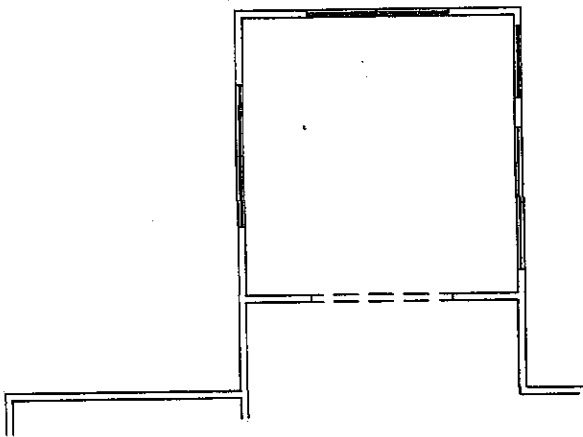
# WESTMONT 2419 -OPTIONAL STRUCTURAL FEATURES



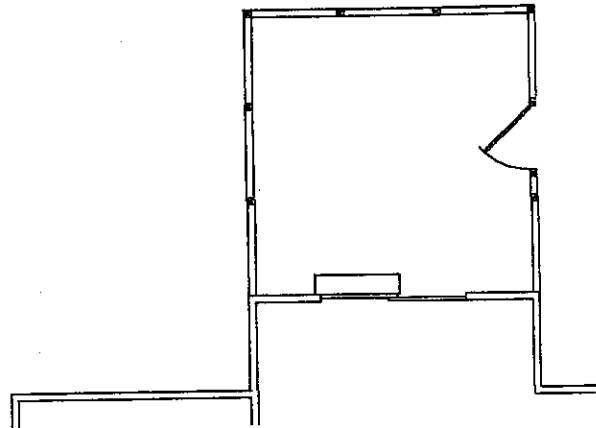
OPTION-GARAGE SERVICE DOOR



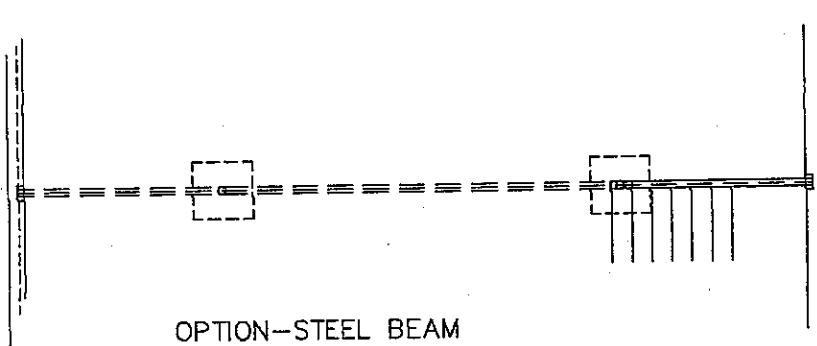
OPTION-TREY CEILING IN MASTER



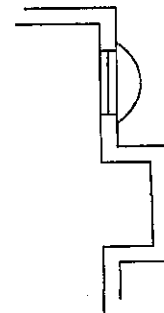
OPTION-12'x12' 4-SEASON ROOM



OPTION-12'x12' SCREENED-IN PORCH

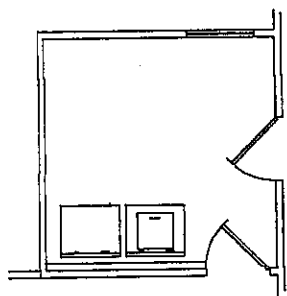


OPTION-STEEL BEAM

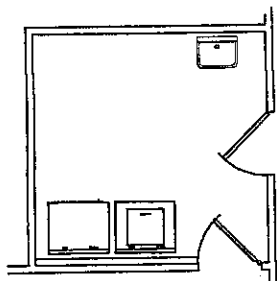


OPTION-STANDARD WINDOW IN BASEMENT

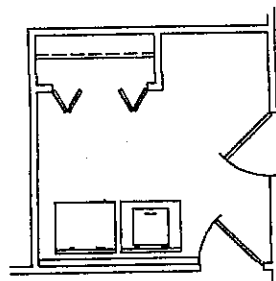
# WESTMONT 2419 -OPTIONAL STUDIO FEATURES



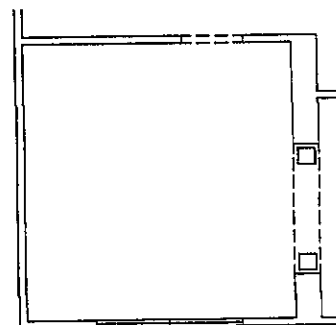
OPTION-3436 WINDOW  
IN LAUNDRY ROOM



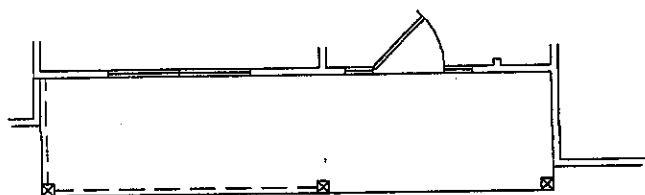
OPTION-LNDRY TUB  
IN LAUNDRY RM.



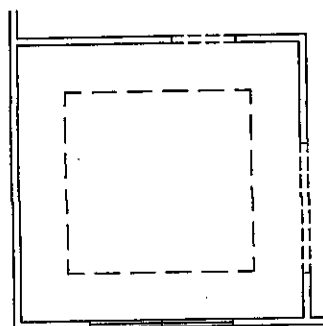
OPTION-CLOSET  
IN LAUNDRY RM.



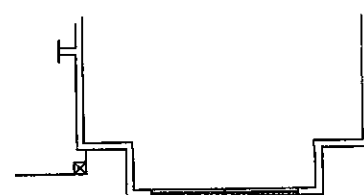
OPTION-ARCHED DINING RM  
OPENING WITH PILLARS



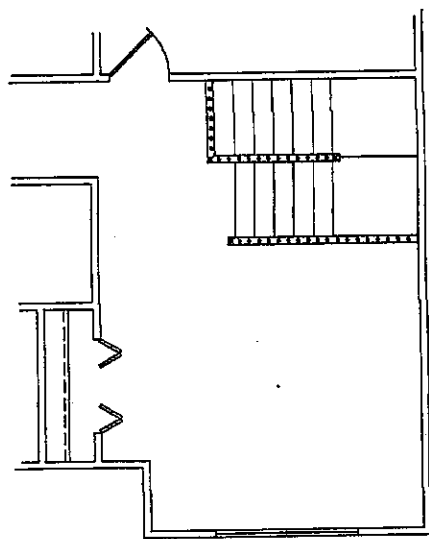
OPTION-PORCH RAILING  
(ON ELEVATION "A")



OPTION-2x6 DROPPED TRAY  
CEILING IN DINING ROOM

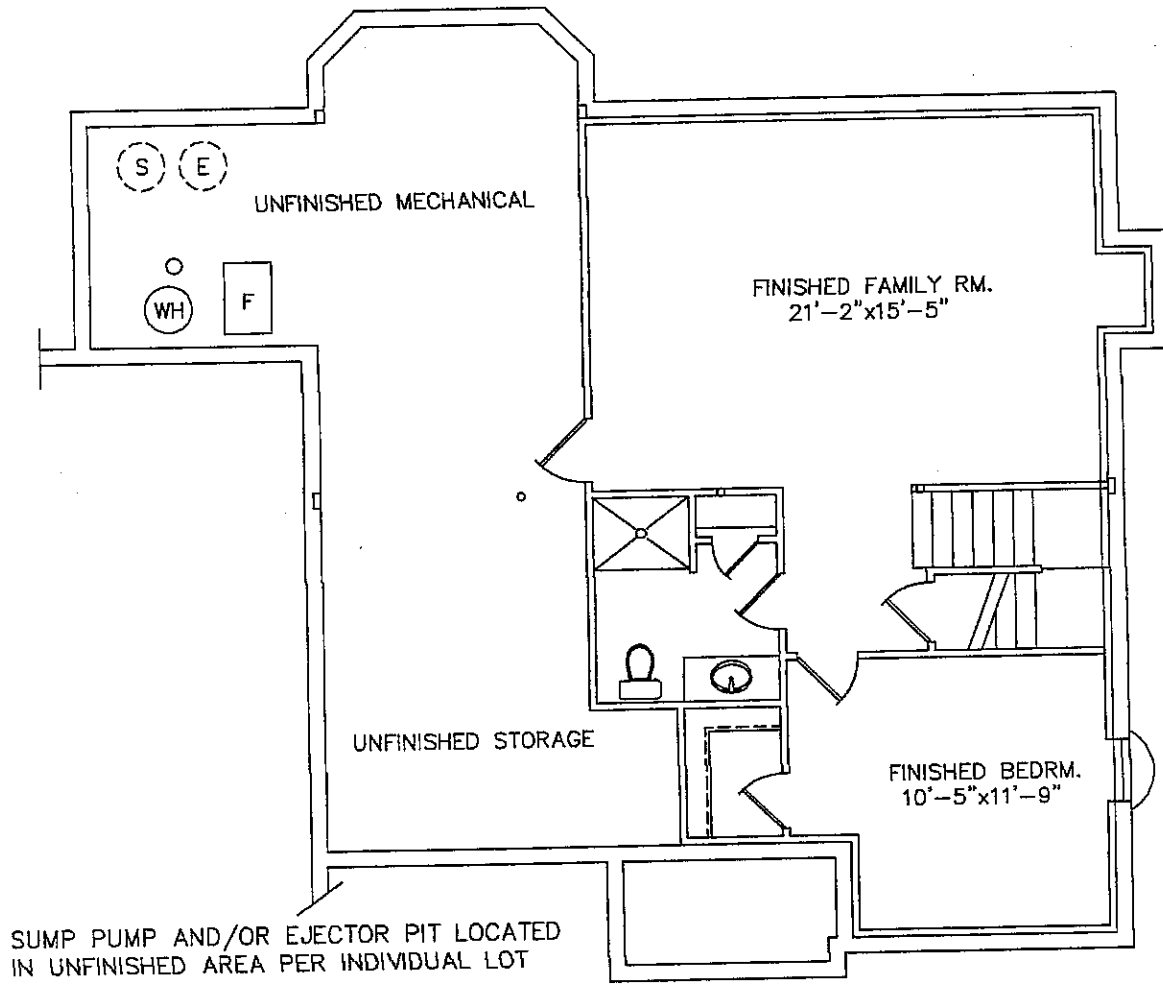


OPTION-WINDOW SEAT



OPTION-LOFT BEDROOM #4

# WESTMONT 2419 -OPTIONAL STUDIO FEATURES



## FINISHED BASEMENT OPTIONS

FINISHED FAMILY ROOM: 387 SQ. FT.  
ADD FINISHED BATHROOM: 458 SQ. FT.  
ADD FINISHED BEDROOM: 635 SQ. FT.