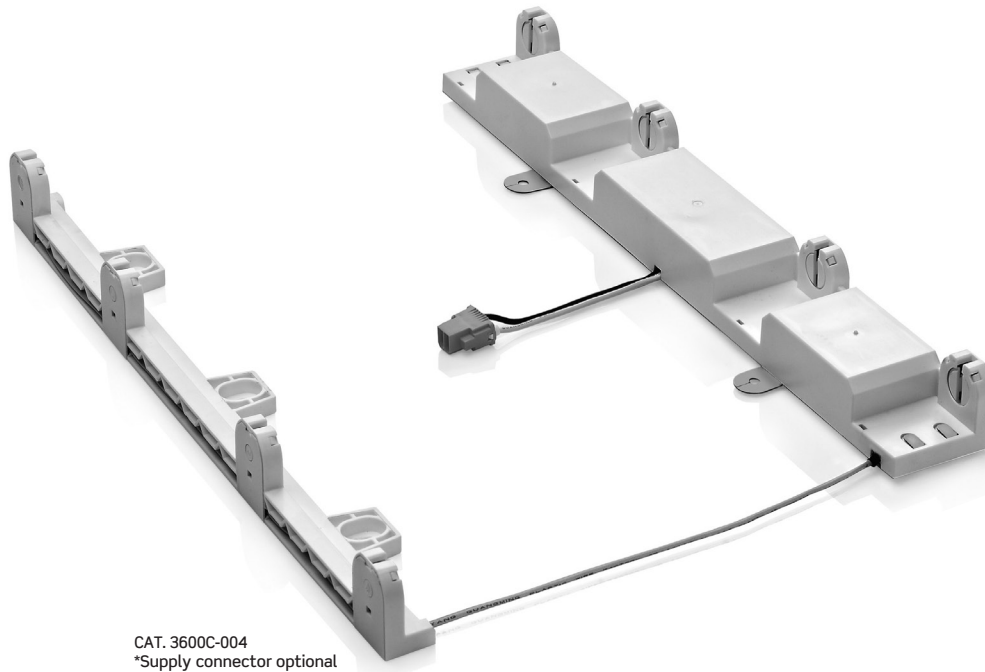


Zipline™

Fixture Assembly Solution



CAT. 3600C-004
*Supply connector optional

You are about to see a revolution in fluorescent fixture manufacturing. Imagine a linear fluorescent fixture with no internal wiring, no socket brackets and no expensive ballast cover. Introducing the Zipline™ Fixture Assembly Solution from Leviton. It is the fastest, easiest and most flexible manufacturing solution in the industry. With Zipline the ballast and lampholders are integrated into a single assembly that installs in seconds. You save unprecedented assembly line time, which translates into huge cost savings.

SIMPLE AND COMPACT

The Zipline™ fixture assembly solution is transversely mounted into a one-piece molded lampholder assembly, so there is no longer any need for a socket mounting bracket or fixture-length ballast cover. The absence of a center-mounted ballast and wiring assembly provides freedom for entirely new photometric design possibilities.

FEWER PARTS

The connected ballast and socket can be ordered as a single part, consolidating a long list of separate SKU's, simplifying warehousing, reducing the number of small parts in the manufacturing cell, and streamlining procurement. Leviton's Zipline solution will save you time, slash costs and increase operational efficiencies.

LESS CHANCE FOR ERROR

Because the ballast and lampholders are integrated and pre-wired, common errors resulting from assembly line miswiring, wires falling out of sockets in the assembly process, shunt/non-shunt socket misapplications and other common quality issues encountered on the fixture assembly line will be practically eliminated.

EASE OF REPLACEMENT

Field repair of fluorescent fixtures incorporating the Zipline solution is extremely simple and fast. Contractors can replace either side of the assembly in minutes without the need to remove ballast covers, cut or splice wires, rewire sockets or disassemble socket bars. Because Leviton is one of the largest providers of fixture replacement parts to the distribution industry, replacement parts will be readily available in all major distribution houses.

Welcome to the revolution. Call your Leviton representative for a demonstration of the Zipline™ Fixture Assembly Solution today.

FEATURES AND BENEFITS

- Ease of assembly
- No electrical skills needed
- Significant cost saving
- Assembly time is dramatically reduced

Leviton Mfg. Co., Inc.

201 North Service Road, Melville, NY 11747-3138 • Tech Line: 1-800-824-3005 • Fax: 1-800-832-9538 • www.leviton.com
© 2010 Leviton Manufacturing Co., Inc. All rights reserved. Subject to change without notice.

Input Characteristic

- Input Voltage 120v to 277v
- Input Voltage Range 108v~305v
- Power Line Frequency 50/60 Hz
- Maximum Line Current 1.0 A
- Input Wattage 116 W
- Input Power Factor (PF) 0.99
- Line Current Harmonics (THD) less than 10%
- Lamps operated are 4ft 32W T8 and F2ft 17W T8

Ballast Characteristic

- High power factor greater than .99
- Open Circuit Output Voltage (OCV) 600 V
- Lamp Current Crest Factor (CCF) 1.70 or less
- Max. Continuous Operating Power 120 W
- Ballast Factor .88
- Lumens/Watt 80 w/GE lamp (CRX 85)

ENVIRONMENTAL REQUIREMENTS

- Max. Case Hot Spot Temperature 75°C
- Min. Lamp Starting Temperature 32°F/0°C
- Max. Possible Ambient Temperature 40°C
- Sound Rating A

Output Characteristic

- Lamp Types Operated T8/32w, T8/30w, T8/28w
- Number of Lamps 4
- Parallel wired
- Lamp Operating Frequency 42 kHz or above
- Ignition Method Instant Start

Lampholder Characteristic

- Instant Start Rated
- T Rating 130°C, PBT Material
- Lamp Lock

AGENCY STANDARDS AND COMPLIANCE

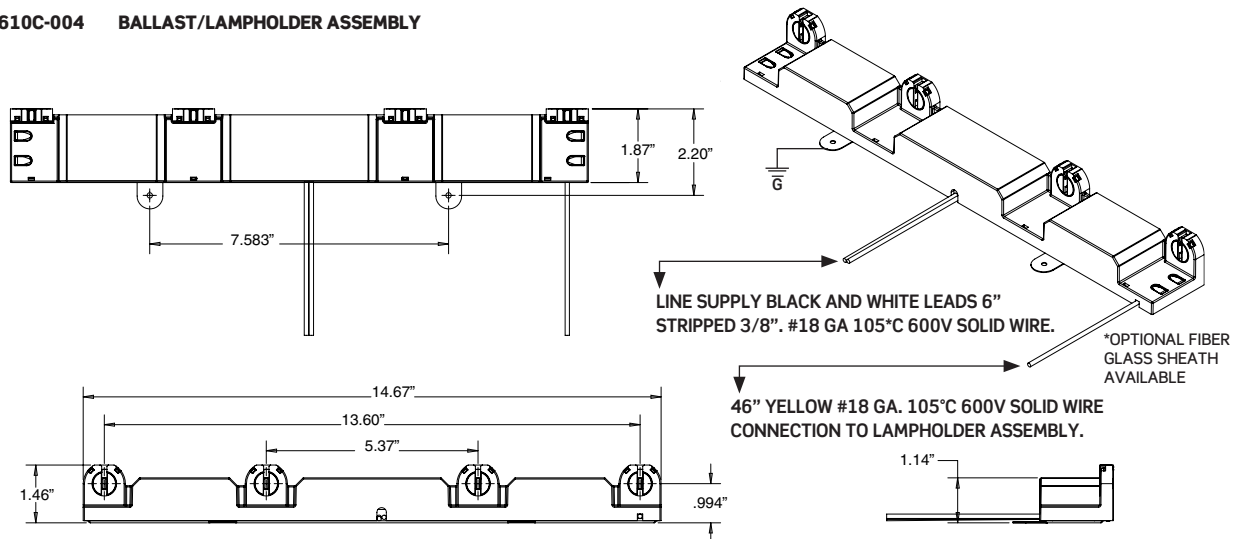
- Complies with FCC Part 18, Class A
- cULus
- EPA Energy Star
- NEMA Premium

WARRANTY INFORMATION

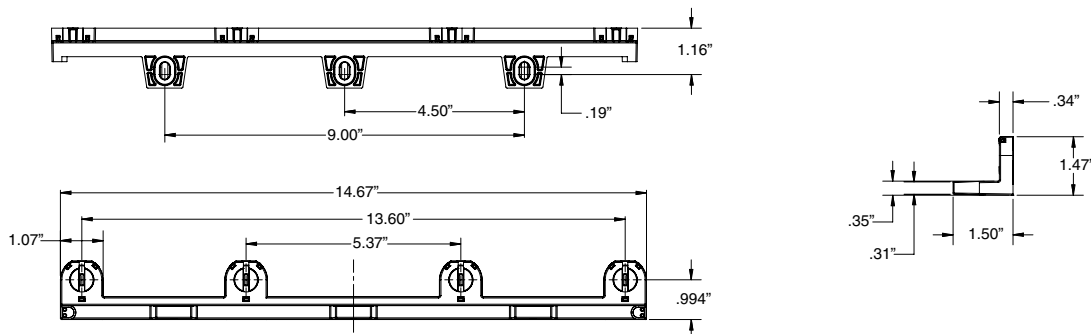
- Limited Five-Year Warranty

COMMERCIAL DIMENSIONAL DRAWINGS FOUR LAMP

CAT. 3610C-004 BALLAST/LAMPHOLDER ASSEMBLY



CAT. 3620C-004 LAMPHOLDER ASSEMBLY



Leviton Manufacturing Co., Inc.

201 North Service Road, Melville, NY 11747-3138 • Tech Line: 1-800-824-3005 • Fax: 1-800-832-9538 • www.leviton.com

Leviton Manufacturing of Canada, Ltd.

165 Hymus Boulevard, Pointe Claire, Quebec H9R 1E9 • Telephone: 1-800-469-7890 • FAX: 1-800-563-1853

Leviton S. de R.L. de C.V.

Lago Tana 43, Mexico DF, Mexico CP 11290 • Tel. (+52) 55-5082-1040 • FAX: (+52) 5386-1797 • www.leviton.com.mx

Visit our Website at: www.leviton.com/oem/zipline

© 2010 Leviton Manufacturing Co., Inc. All rights reserved. Features and specifications subject to change. Zipline is a trademark of Leviton Manufacturing Co., Inc.

