

Two Piece Sleeper PJ's

Sewn with serger

Fabric- Stretchy Knit

Front and Back = solid color

Sleeves = may be print and/or jersey with less stretch

Ribbing may be the same as the body of the gown or may be contrasting color.

All fabrics should agree as to gender- no mixing blue with pink, purple or flowers

Cutting:

Top

According to pattern:

Cut 1 Front, 1 Back, 2 sleeves

2 ½ inch Ribbing: cut 1 piece 10 inch for neck: 2 pieces 5 in. for sleeves

Bottom

Cut two pants parts; one for the front and one for the back.

2 ½ ribbing: cut 2 pieces 5 inches for the leg bottoms, 1 piece 18 inches for waist

Sewing

Top

1. Fold sleeve ribbing in half lengthwise. Stitch to bottom of sleeves stretching to fit.
2. Stitch sleeves to the front. Stitch back to one sleeve. Fold neck ribbing in half lengthwise and stitch to neck edge, stretching the ribbing to fit evenly.



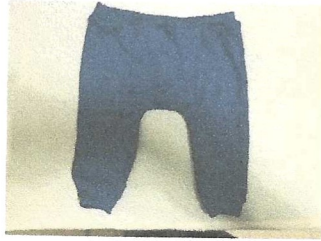
3. Stitch remaining sleeve-back seam. Seam from neck ribbing to underarm.
4. Stitch one side seam from the sleeve ribbing to the bottom of the top.
5. Serge around the bottom edge.
6. Stitch remaining side seam



7. Secure all threads.

Bottom

1. Sew one side seam.
2. Attach waist ribbing.
3. Sew other side seam.
4. Attach ribbing to the bottom of the legs.
5. Sew inseams, starting at the bottom of one leg and sewing up, across crotch and down the other leg.



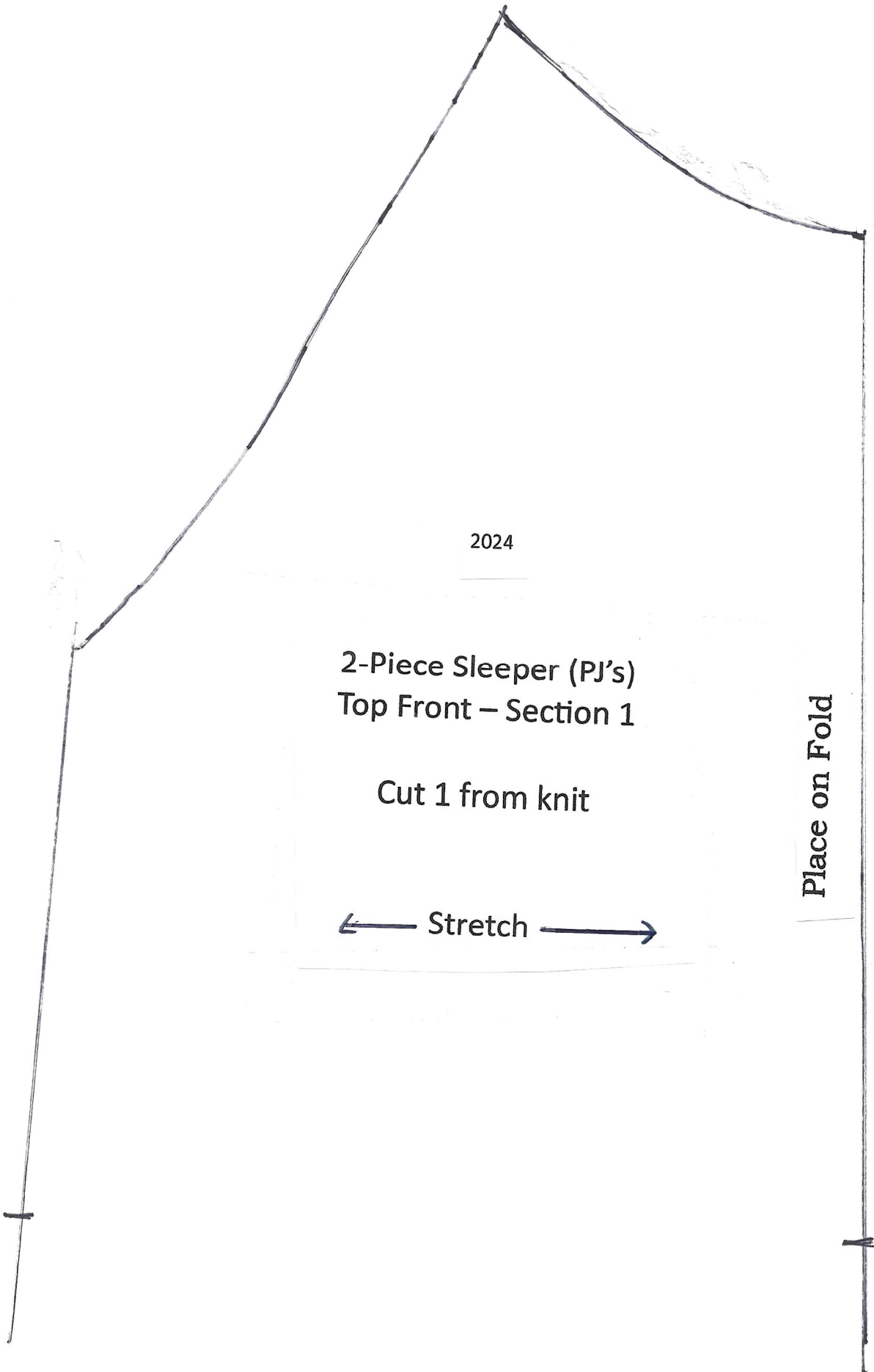
2024

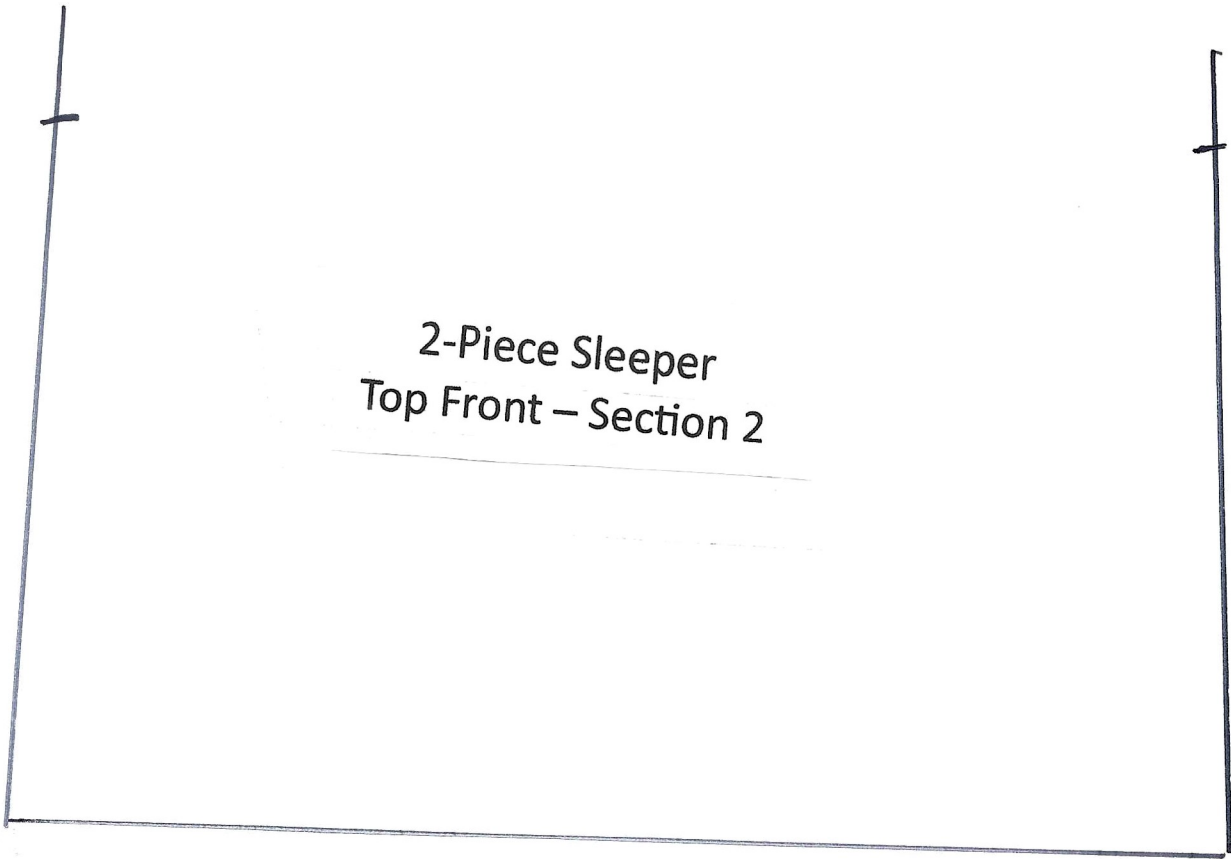
2-Piece Sleeper (PJ's)
Top Front – Section 1

Cut 1 from knit

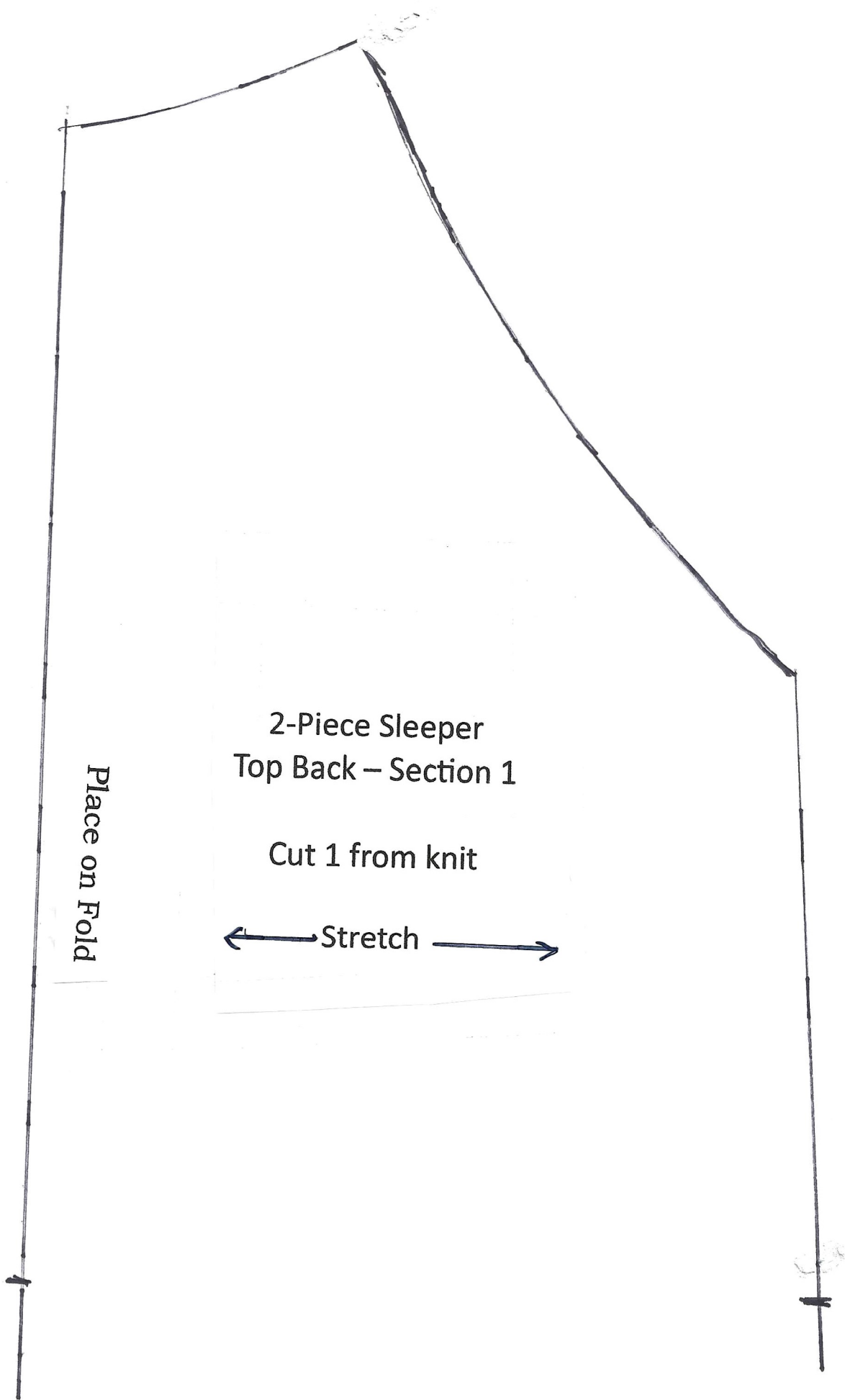
← Stretch →

Place on Fold





2-Piece Sleeper
Top Front – Section 2



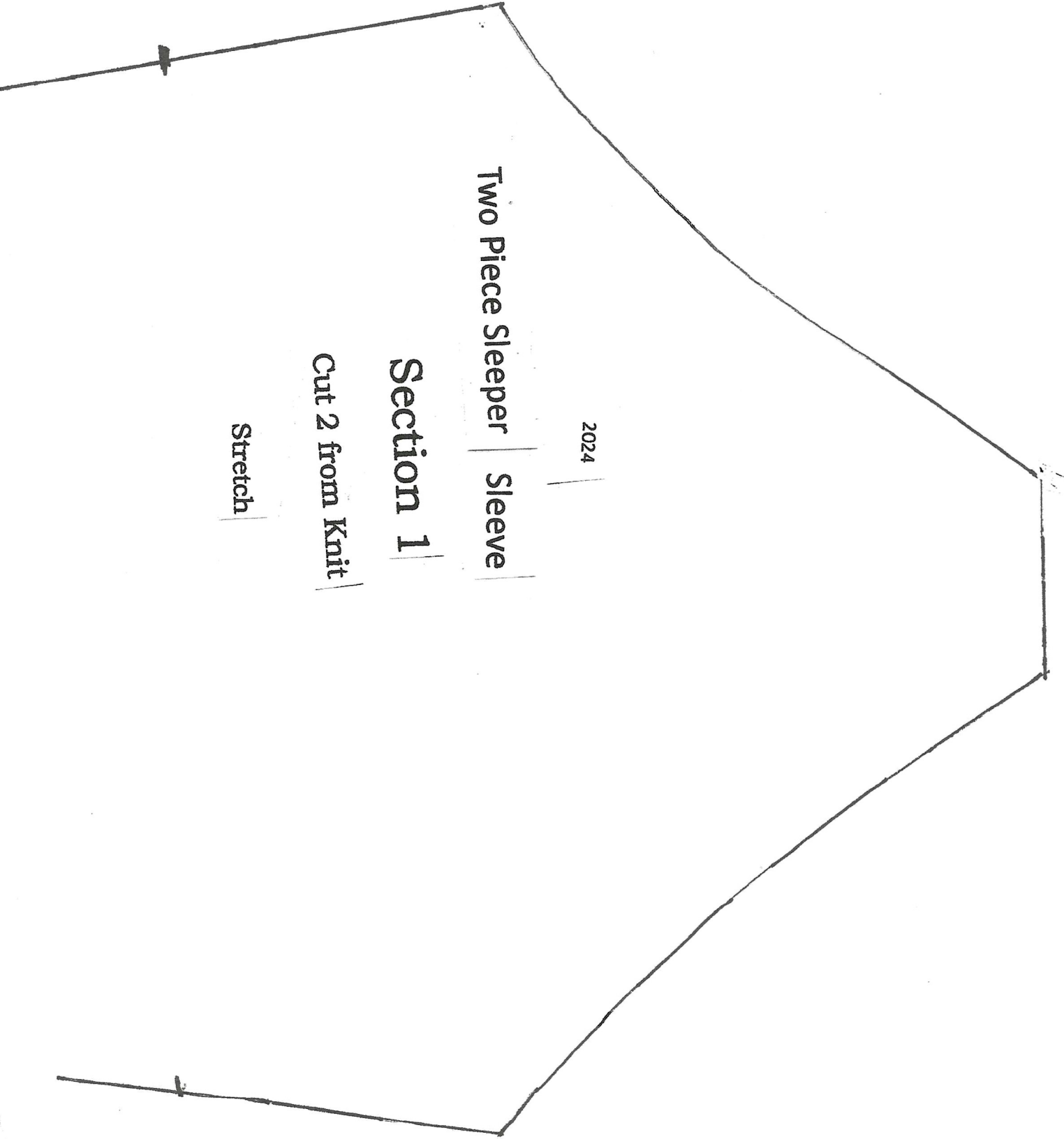
2-Piece Sleeper
Top Back - Section 1

Cut 1 from knit

← Stretch →

Place on Fold

2-Piece Sleeper
Top Front – Section 2



Two Piece Sleeper | Sleeve

2024

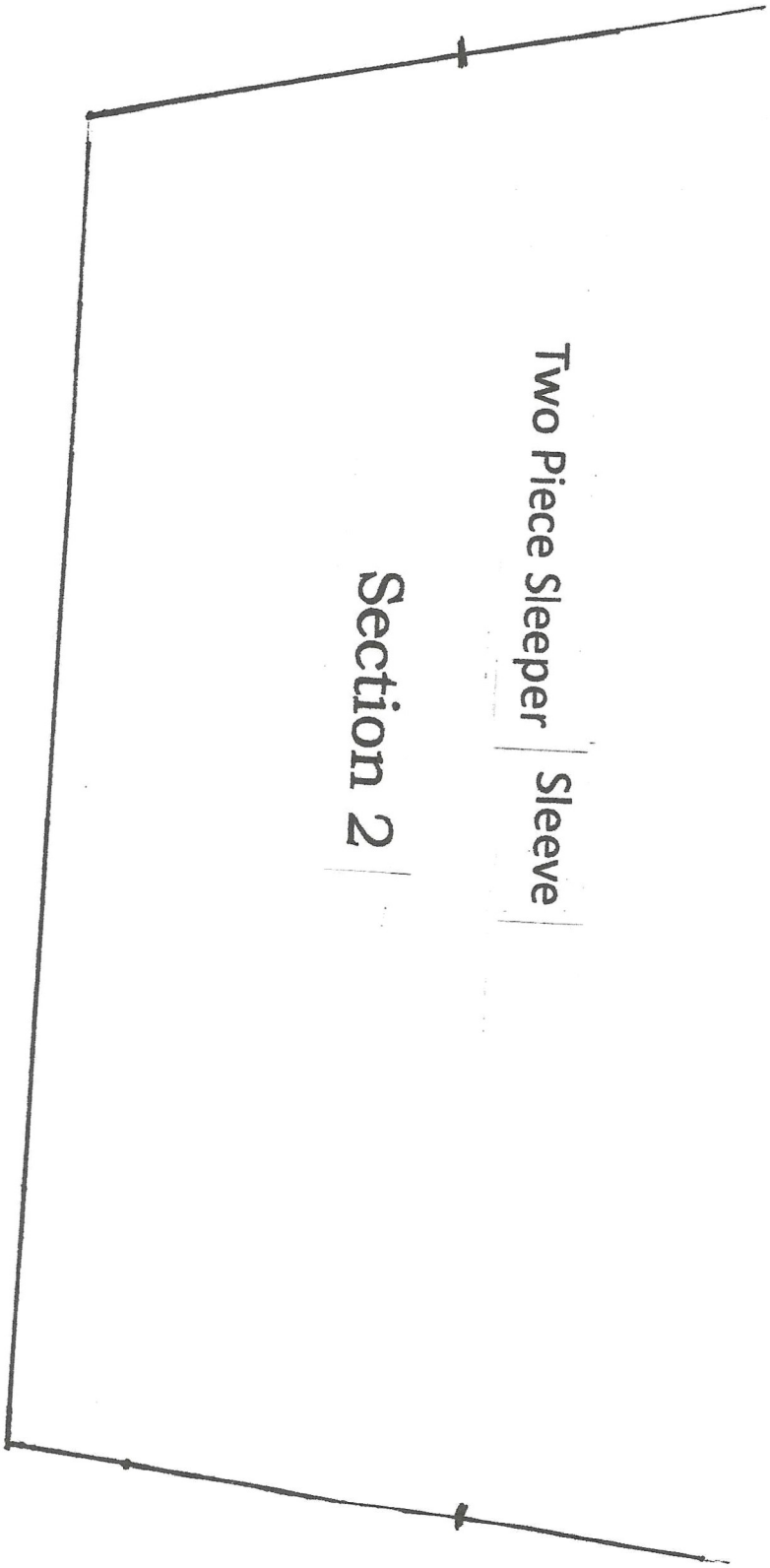
Section 1

Cut 2 from Knit

Stretch

Two Piece Sleeper | Sleeve

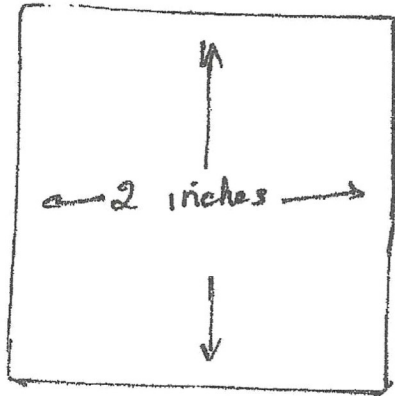
Section 2



PJ
BOTTOM

PART 1 OF 2

←Stretch →



Match hash marks with marks on Part 2



Match hash marks with marks on Part 1

PJ
BOTTOM

PART 2 OF 2