

**2023
Sleeper**

Fabric:

Cotton knit with 20% stretch [3 inch piece will stretch to 4 inches]

Front and back – solid color

Sleeves – may be print and/or jersey with less stretch

Ribbing may be the same as the body of the sleeper or may be contrasting color.

All fabrics should agree as to gender- avoid mixing blue with pink, purple or flowers

Cutting:

According to pattern:

Cut 1 Front, 1 Back, 2 sleeves

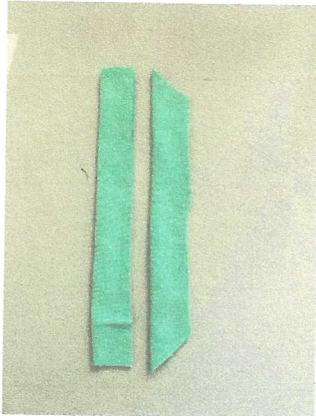
2 ½ inch Ribbing: cut 1 piece 10 inch for neck: 2 pieces 5 in. for sleeves:

Iron-on interfacing- ¾ inch X 12 inches

Instructions:

1. Fold sleeve ribbing in half lengthwise. Stitch to bottom of sleeves stretching to fit.
2. Finish the front edges attaching interfacing. Do not iron interfacing at this time.
3. Stitch sleeves to sleeper fronts
4. Stitch sleeves to back
5. Fold the edges back, ¾ inch, right sides together
6. Fold the ribbing pieces in half lengthwise and mark the midpoint
7. Cut the ends of the ribbing diagonally so the folded edge is pointed

Fig. 1



8. Mark the midpoint of the neck edge (it will not be at a seam)
9. Match the midpoint of the neck edge and the midpoint of the ribbing

10. Place each end of the ribbing under the front facing with the point at the fold



Fig. 2

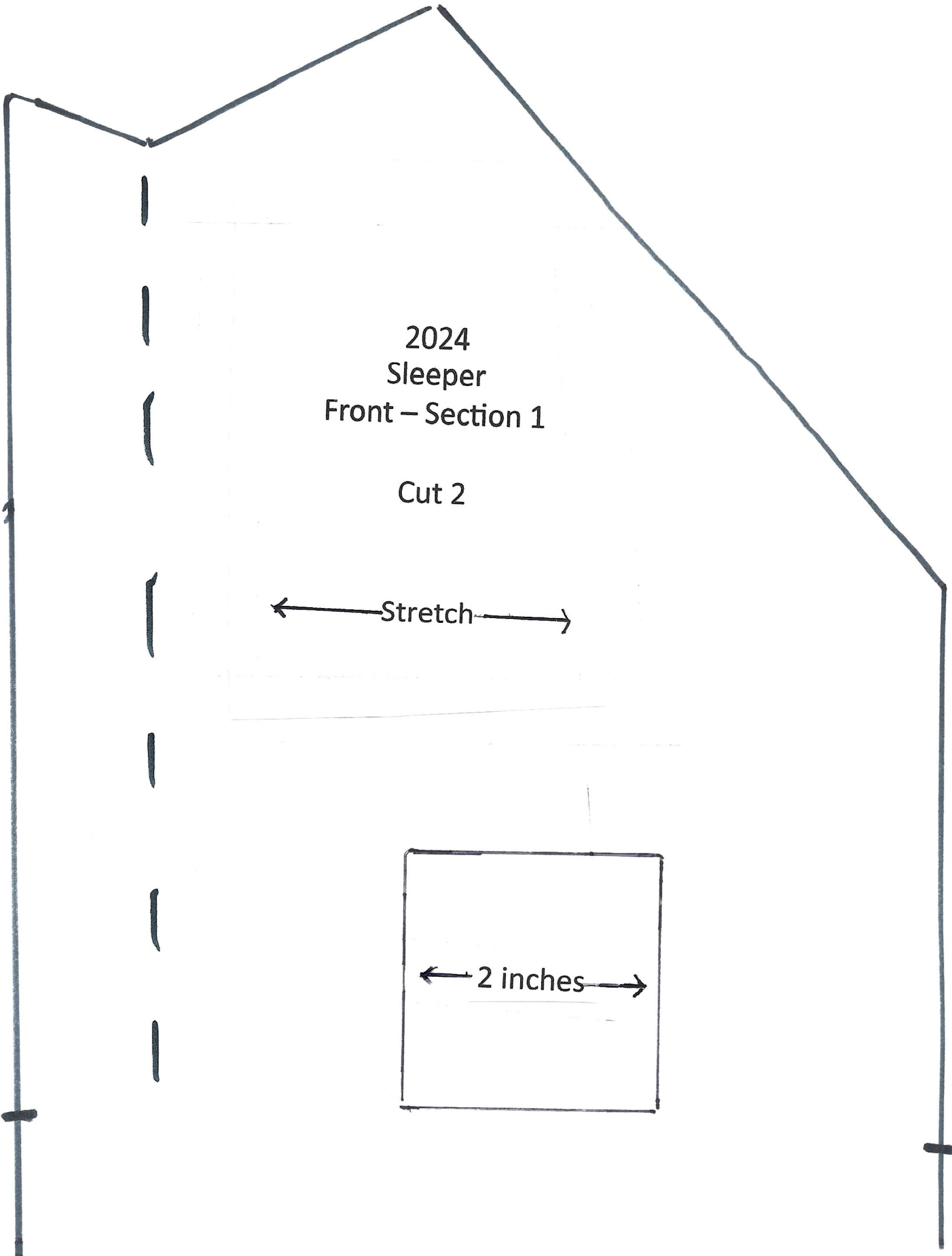
11. Serge the ribbing to the neck edge, stretching the ribbing to fit

Finish

1. Turn facing right side out and steam to adhere interfacing
2. Lap front center edges and pin at crotch
Generally, girl gowns lap right over left and boy gowns lap left over right
3. With right sides of the garment together, stitch from one sleeve down the side and legs, then back to the other sleeve in a single seam
4. Secure threads and turn garment right side out.
5. Place 4 snaps (size 14) on the front of the sleeper; one at the neck edge and the others spaced 4 inches apart
Garments may be turned in without snaps.



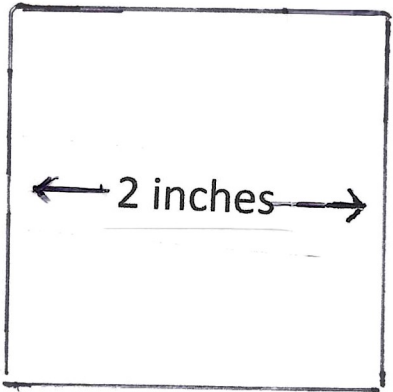
Fig. 3



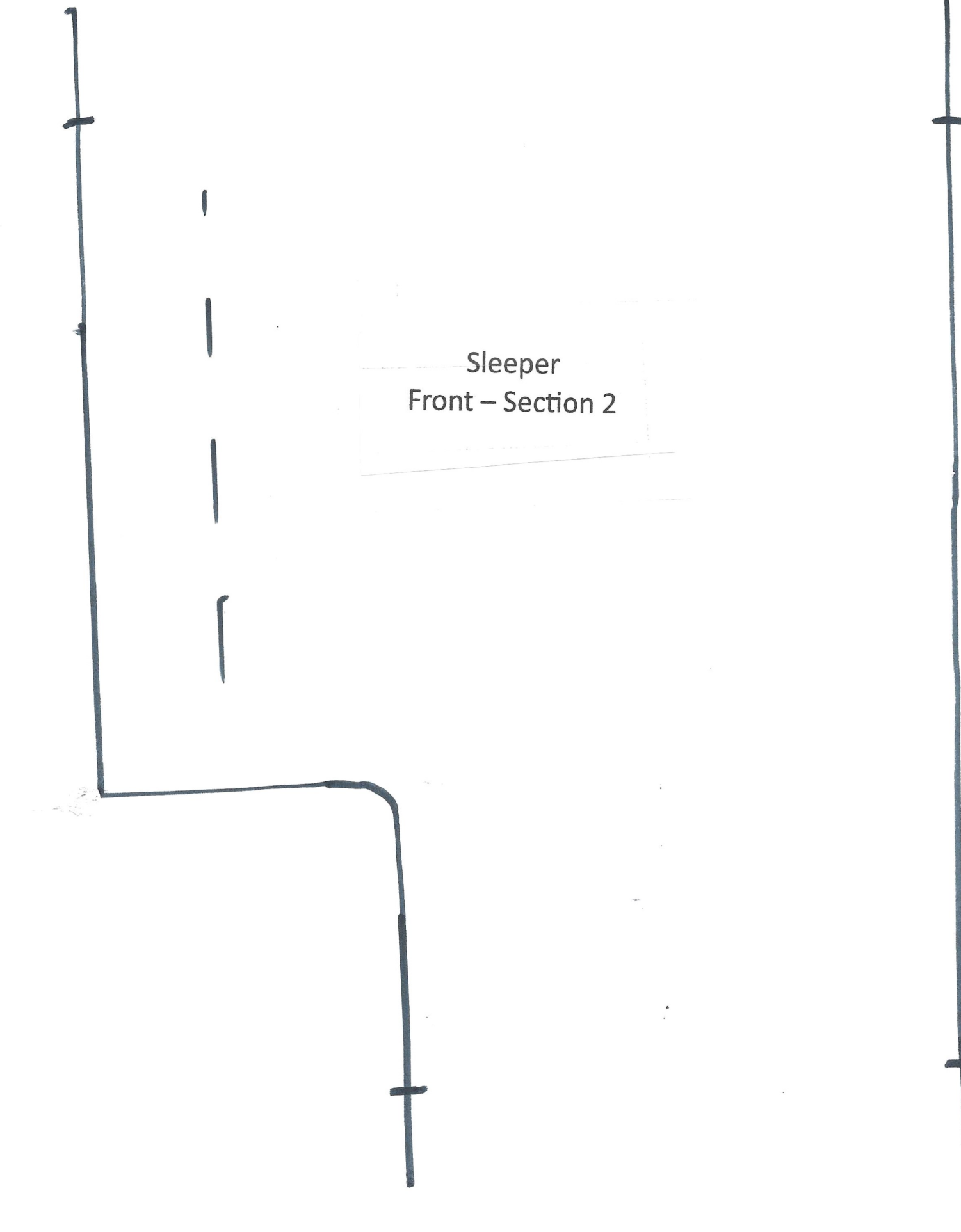
2024
Sleeper
Front - Section 1

Cut 2

← Stretch →

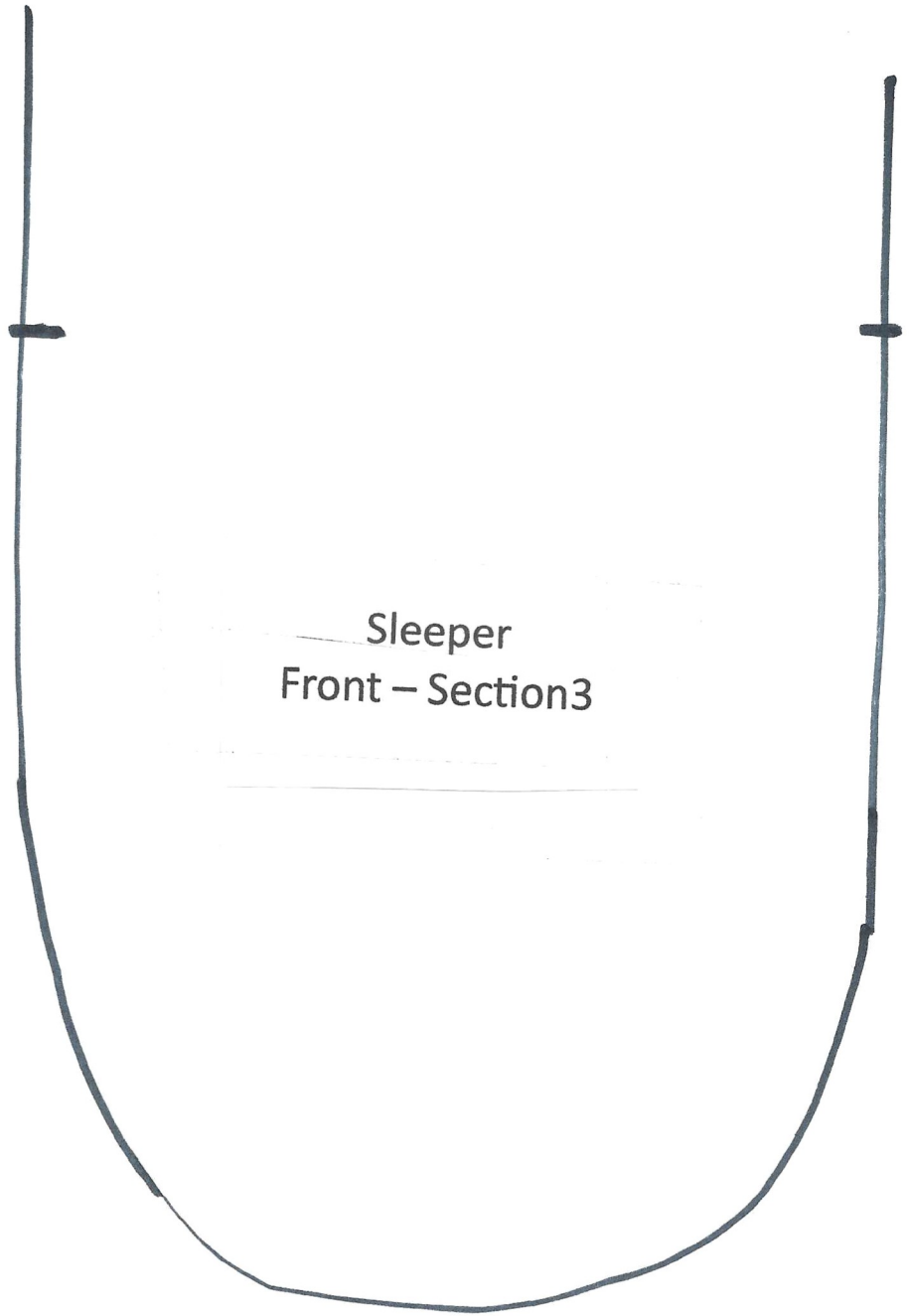


← 2 inches →

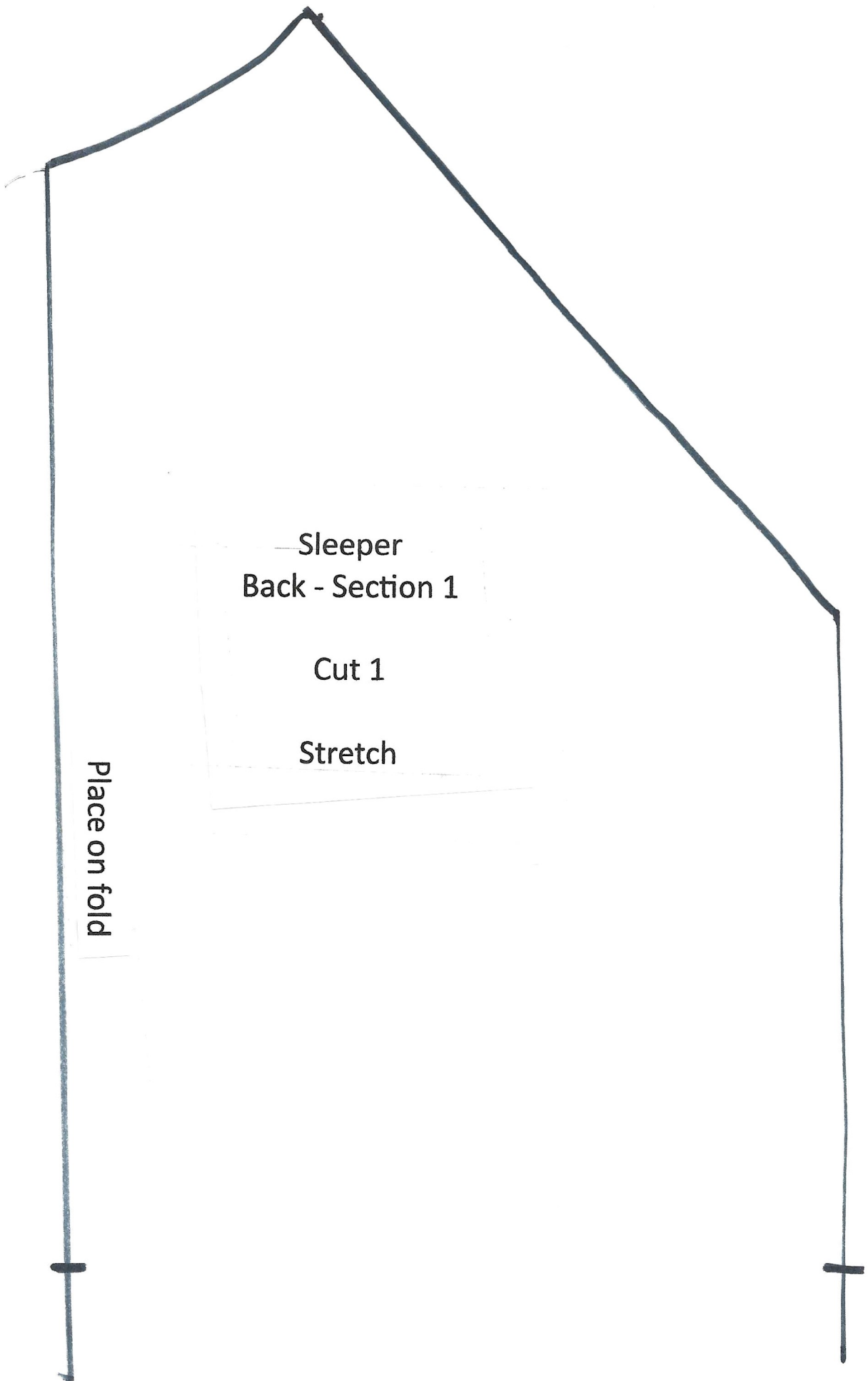


The diagram shows a hand-drawn cross-section of a sleeper. On the left, a vertical line represents the top edge, with a horizontal tick mark near the top. A horizontal line extends from the bottom of this vertical line to the right, then turns 90 degrees downwards to form a vertical line. This vertical line has a horizontal tick mark near its bottom. In the center, a dashed vertical line indicates a midline. To the right, another vertical line represents the bottom edge, with a horizontal tick mark near the top. The text 'Sleeper Front - Section 2' is centered within a dashed rectangular box.

Sleeper
Front - Section 2



Sleeper
Front - Section 3



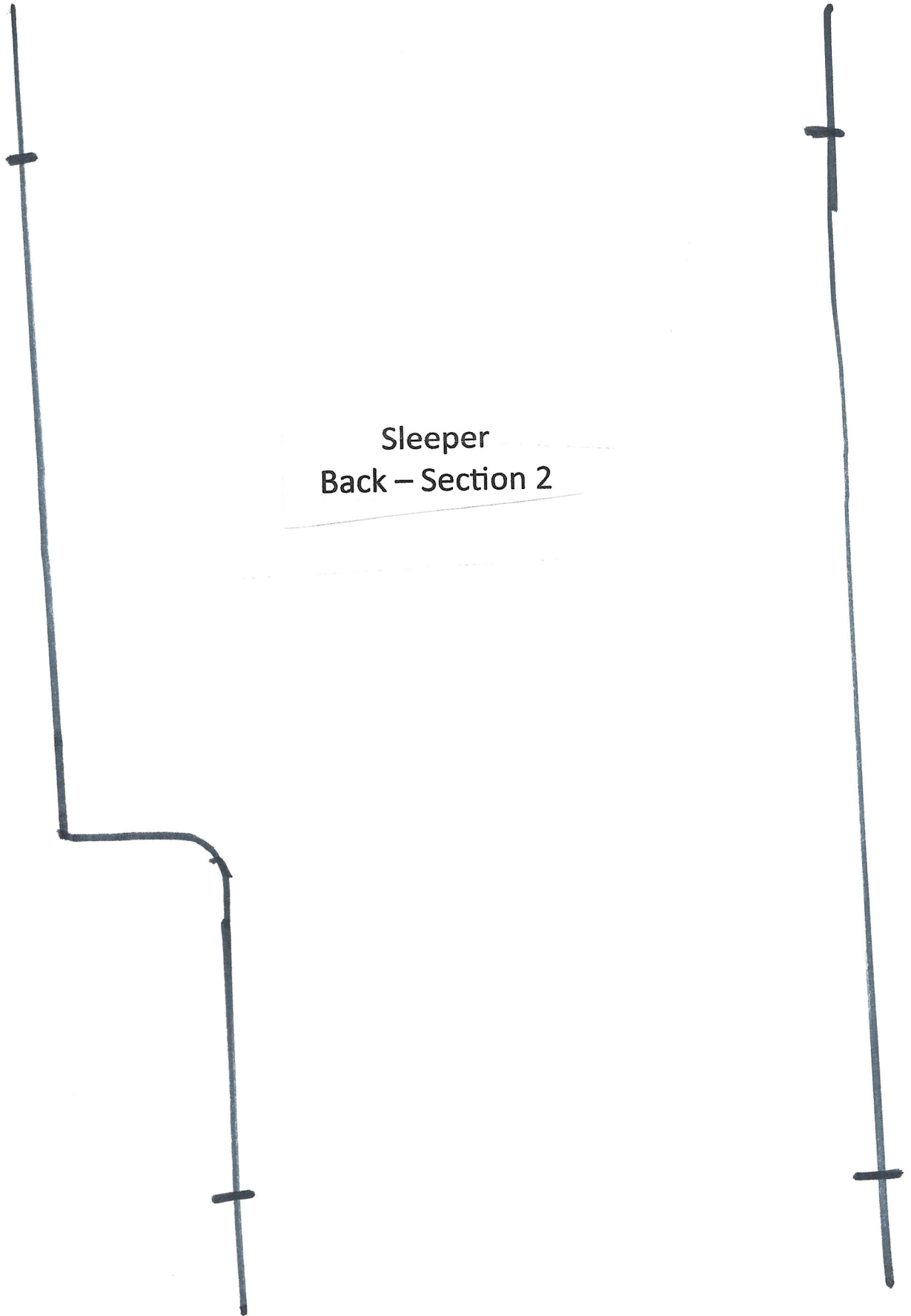
Sleeper
Back - Section 1

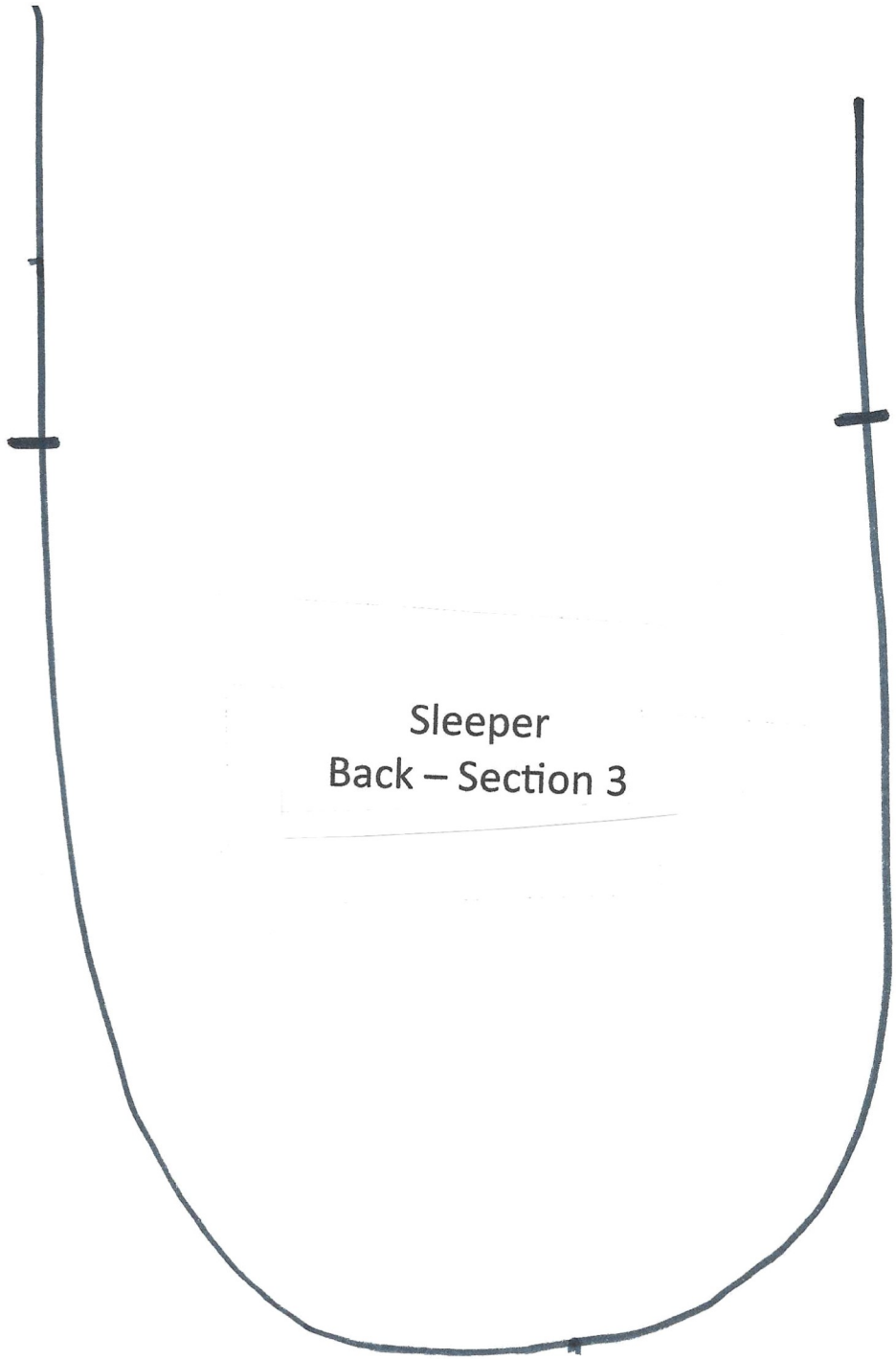
Cut 1

Stretch

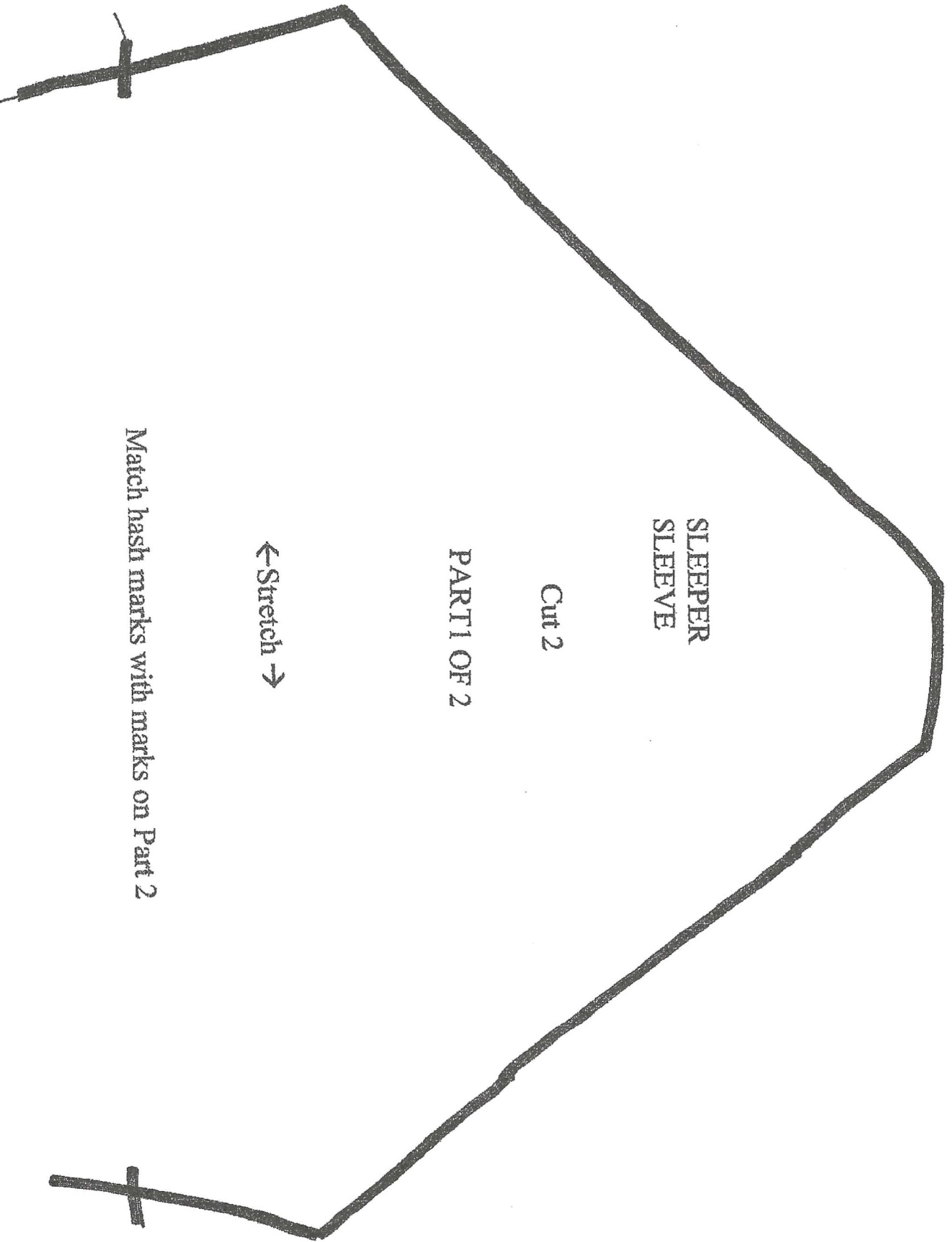
Place on fold

Sleeper
Back – Section 2





Sleeper
Back - Section 3



SLEEPER
SLEEVE

Cut 2

PART 1 OF 2

← Stretch →

Match hash marks with marks on Part 2

Match hash marks with marks on Part 1

SLEEPER
SLEEVE

PART2 OF 2

