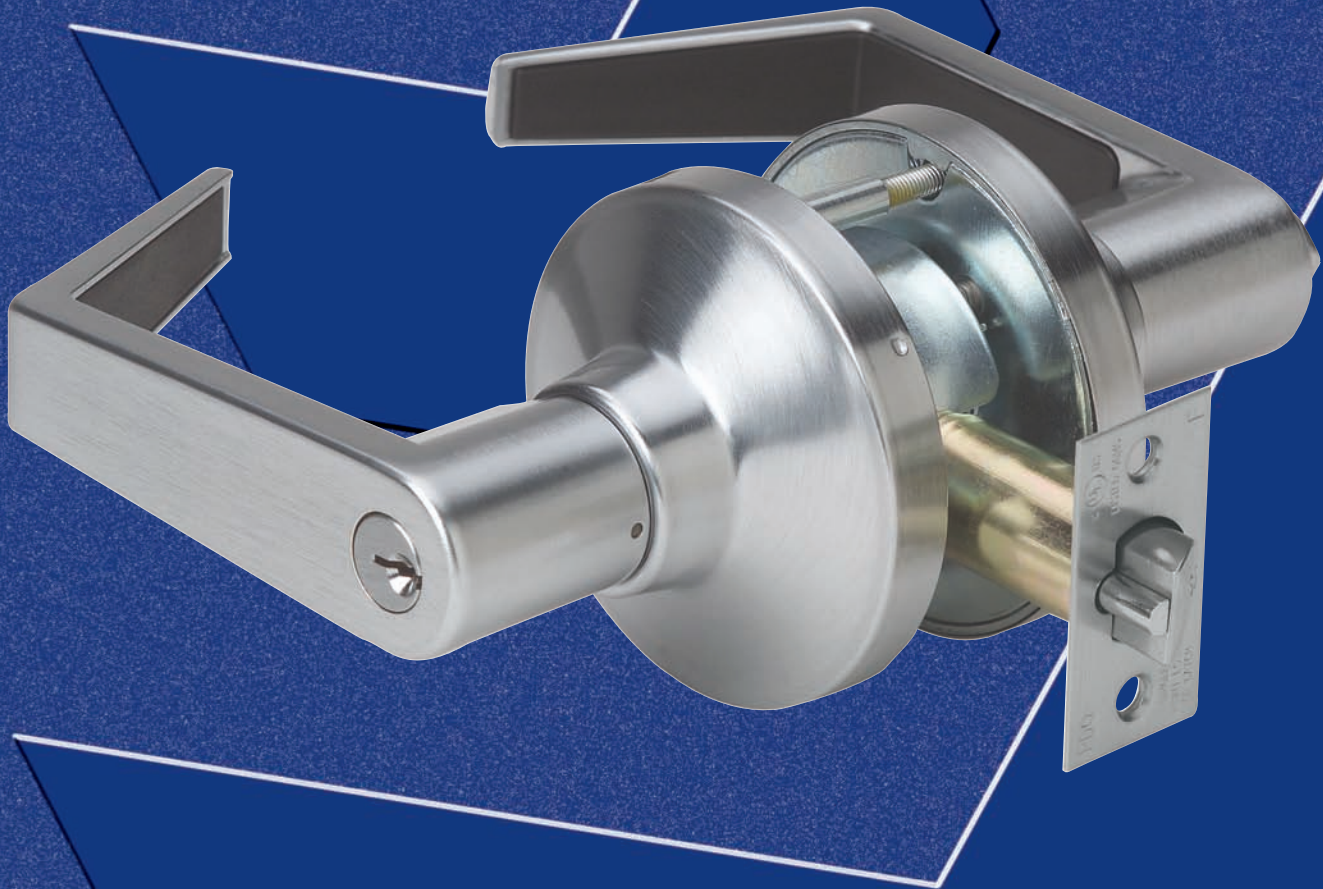


SA Series

Spirit Locks



SA SERIES SPIRIT COMMERCIAL GRADE 2 CYLINDRICAL

SUGGESTED ARCHITECTURAL SPECIFICATIONS

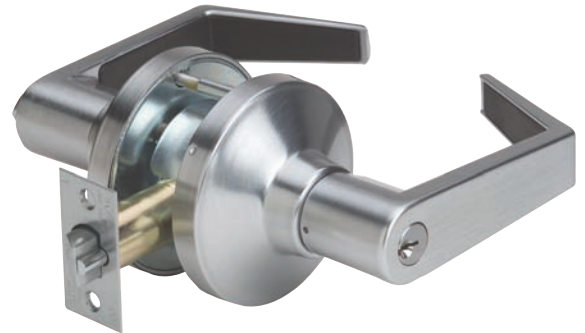
Lockset will be SA Series *SPIRIT* from PDQ Industries, Inc., Leola, Pennsylvania, assembled in U.S.A. with a five-year manufacturer's limited warranty, and be certified to ANSI/BHMA A156.2-1996, Series 4000, Grade 2. Locksets shall be listed by U.L./U.L.C. for ratings of "A" (3 hours) label and less, for single doors up to 4'0" x 8'0". U.L. 10C/UBC 7-2 (1997) Positive Pressure Rated and U.L. 10B Neutral Pressure Rated.

Levers to be 5-1/8" in overall length with supportive spring power totally independent of chassis or latch unit. Lockset to be fully adjustable for 1-3/8" to 1-3/4" doors. Positive leverstop is to be totally independent of chassis or latch mechanism. Lockset fasteners to be concealed with through-the-door through-bolt attachment outside the 2-1/8" door prep.

SPECIFICATIONS – SA Series

FOR DOORS:	1-3/8" to 1-3/4" thick / Preset for 1-3/4" door
APPLICATION:	Through door thru-bolting / Fits standard 160 and 161 Door prep
BACKSET:	2-3/4" standard / 2-3/8", 5" optional
CHASSIS:	Heavy-gauge cold rolled steel mechanism / Dichromated for corrosion resistance
FRONT:	2-1/4" x 1-1/8" or 2-1/4" x 1" / Beveled 1/8" on 2" / Stainless Steel or Wrought Brass
STRIKE:	ASA standard / T-Strike or Full Lip Strike optional / Stainless Steel or Wrought Brass
LATCHBOLT:	1/2" Throw
HAND:	Non-handed
TRIM:	Solid Zinc diecast PHL Levers with plastic insert / Wrought Brass Roses / Concealed Screws
KEYS:	Two (2) per Cylinder
KEYWAYS:	SCC standard / Also available in keyways of other manufacturers
INTERCHANGEABLE CORE:	Available for all keyed functions / 6 or 7-pin / Compatible with Best, Falcon & Arrow
CYLINDER:	6-pin Brass Insert Cylinder keyed to 5-pins
KEYING:	Options: MK, CMK or GMK / Zero Bitted (KO), Keyed Different (KD) or Keyed Alike (KA) Can be keyed into existing master key systems
FINISHES:	605 (US3), 606 (US4), 613 (US10B), 626 (US26D)
CERTIFICATIONS:	<ul style="list-style-type: none"> ▶ U.L., U.L.C. listed for "A" label (3 hour) single swing doors (4' x 8')
WARRANTY:	Five (5) year Limited Warranty
COUNTRY OF ORIGIN:	Assembled in the U.S.A. with U.S. and foreign material. Meets the requirements of the Buy American Act.

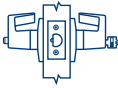
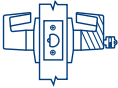
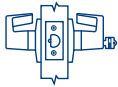
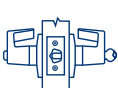




SA SERIES SPIRIT



- ▶ Certified to ANSI/BHMA A156.2-2003, Series 4000, Grade 2
- ▶ Meets all applicable accessibility requirements of the Americans with Disabilities Act (ADA)



SA SERIES SPIRIT COMMERCIAL GRADE 2 FUNCTION CHART

FUNCTION	FUNCTION NO.	INSIDE	OUTSIDE	FUNCTION DESCRIPTION	ANSI NO.
Entrance	SA 116			<ul style="list-style-type: none"> Latchbolt operated by lever from either side or key in outside lever Outside lever locked by push/turn button on inside When outside lever is locked by push button on inside, key from outside, or rotating inside lever unlocks outside lever When outside lever is locked by pushing and turning the button on the inside, key from outside, or rotating inside lever retracts latch but does not unlock outside lever Deadlocking (guarded) latchbolt 	F81
Storeroom	SA 115			<ul style="list-style-type: none"> Latchbolt operated by inside lever or key in outside lever Outside lever always fixed Deadlocking (guarded) latchbolt 	F86
Classroom	SA 148			<ul style="list-style-type: none"> Latchbolt operated by lever from either side Outside lever locked by key from outside Outside lever unlocked by key from outside Inside lever always operates latch Deadlocking (guarded) latchbolt 	F84
Entry	SA 182			<ul style="list-style-type: none"> Latchbolt operated by lever from either side or key in outside lever Outside lever locked by push button on inside Outside lever unlocked by key from outside, or rotating inside lever Deadlocking (guarded) latchbolt 	F82
Passage	SA 126			<ul style="list-style-type: none"> Latchbolt operated by lever from either side at all times 	F75
Privacy Bedroom Bathroom	SA 176			<ul style="list-style-type: none"> Latchbolt operated by lever from either side or emergency release in outside lever Outside lever locked by push button on inside Outside lever unlocked by emergency release from outside, rotating inside lever or closing door 	F76
Communicating	SA 125			<ul style="list-style-type: none"> Latchbolt operated by inside lever Blank plate outside Minimum clearance of 1-1/2" between doors Frame depth 7-1/8" Deadlocking (guarded) latchbolt 	
Single Dummy	SA 211			<ul style="list-style-type: none"> Pull lever one side No mechanical operation 	



PO Box 507 2754 Creek Hill Road Leola PA 17540

800 441 9692

717 656 4281

717 656 6892 Fax

www.pdqlocks.com

PDQ'S SA Series Brochures are now printed entirely on Forest Stewardship Council certified paper. FSC Certification ensures that the paper used in this catalog contains fiber from well-managed and responsibly harvested forests that meet strict environmental and socioeconomic standards. We're proud to be one of the first hardware manufacturers in the country to make this significant move to help our environment. The FSC logo on our brochure signals not only FSC Certification, but also PDQ's commitment to improving the environment.



Mixed Sources

Product group from well-managed forests and other controlled sources
www.fsc.org Cert no. SW-COC-002931
© 1996 Forest Stewardship Council