



Hectors Ltd

海登有限公司

WWW.HECTOS.COM

E-MAIL: WU@HECTOS.COM
TELEFAX: 886-2-27035528
CABLE: "HECTOS"TAIPEI
TEL: 886-2-27073300 / 27073311
MOBILE: 886-932-154637

8F-4, 296, SEC. 4, SHIN YI ROAD, TAIPEI, TAIWAN

OUR REF.

COLOR LIGHT

1. 雙燈頭式 (白光-可見光，黑光-不可見光)
2. 可遙控
3. 雙燈頭有特別設計可做四面八方無限制(180°, 360°, 720°...)遙控轉動而不會纏線
4. 外殼為防酸不銹鋼合於 IP66 標準
5. 白光為良好天候及能見度高時使用，其特性為：
 1. HMI 為同功率氙氣燈的有效照明距離二倍以上
 2. 光角闊而均勻
6. 黑光為超紫外線燈，肉眼看不見，為在能見度及天候不佳如下雪，下雨，起霧等狀況下使用，其特性為：
 1. 黑光可穿透雪，霧，雨而有照明作用
 2. 黑光遇海上油污及有反光物質的海上導航標幟，落水人員，都有強效照明反光之作用
 3. 因人眼不可見，故可避免營救或被救人員被光照射因目眩而無法有效動作
7. 用途：
 1. 增強航行的能見度
 2. 強力搜索
 3. 救難
 4. 監視海面油污染及海底油管之破裂漏油

Color Light



Marine searchlight technology for good and poor visibility conditions



For excellence in
Safety at Sea



**Seatrade
AWARDS**

2003

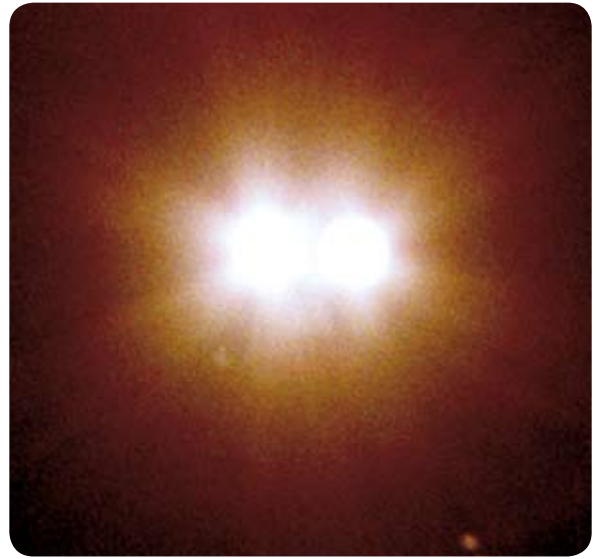
- Navigation/Manoeuvring
- Search and Rescue
- Oil Spill Detection
- Helicopter Landing

The Extraordinary White Light

The high performing white light developed by ColorLight is based on the latest technology regarding Halogen/HMI in combination with specially designed parabolic reflectors with myriad angled steps, similar to a Fresnel lens. The result is probably the sharpest white light available in the market for marine applications. The distances, the light values and the light areas are highly appreciated by many mariners at sea. The ColorLight concept of course allows the beams to be separately operated from spot to flood by remote control.

The searchlight can be equipped with two white lights, one white light in combination with black light or two black lights.

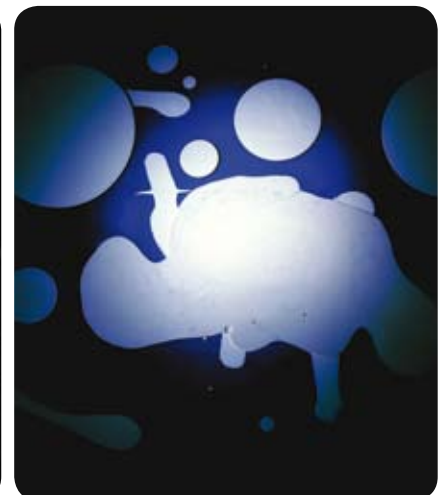
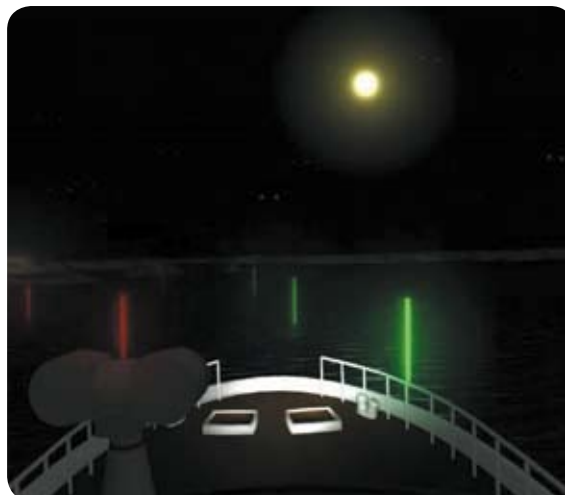
With a ColorLight installed you will see the difference!



The Remarkable Black Light (UV)

The ultraviolet light has a shorter wavelength than ordinary light and is not visible to the human eye. When the UV-beams hit fluorescent pigment a visible light is created and returned. Many modern life jackets are made from fluorescent fabrics. More and more seamarks are coated with fluorescent pigment as it also enhances the visibility in daylight from the UV-beams of the sun. The UV-beams have definite advantages during difficult conditions such as darkness, rain, fog and snow as they can cut through such obstacles more effectively. The white light becomes rather poor as you cannot see behind the reflections eventually creating a white wall. The ColorLight UV is operated in the UVA wavelength area.

With a ColorLight installed you will see the difference!

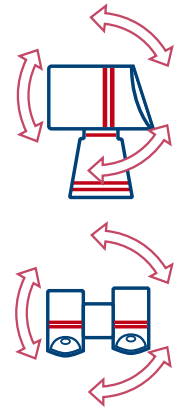


The Unique Unlimited Movement



The ColorLight concept features a dual-headed construction allowing unlimited movements, vertically and horizontally at the same time. Thus you can by remote control direct the searchlight anywhere without any limitations. This flexibility adds value to many marine applications. Strong electrical motors in combination with patented technical solutions is providing safe operations. The white light sweeps the water in a visible way. When using the black light an indicator function is needed to keep track of the position of the searchlight.

With a ColorLight installed you will see the difference!



The wireless options

ColorLight searchlights can be equipped with wireless remote control system, one or more, stand alone or in combination with the stationary remote control system.



The remote control unit is palm size and can easily be kept in a pocket. It performs the basic functions: On/Off, Unlimited movements, Speed control and Focusing. In free line of sight the operational range is 100 - 200 meters. Stronger antennas are available. The small standard radio receiver with a top antenna is easily installed in the wheelhouse. External antennas available.

The remote control is designed to operate in moist and wet conditions, to withstand heat, coldness, shocks and vibrations.



First Class References

Since first delivery in 1996 many, many mariners have experienced the ColorLight technology. We enjoy positive and rewarding feedback from professional mariners who know what to require from safety equipment that must withstand really rough conditions. The ColorLight searchlights are onboard more than 25 different types of vessels, from 12 m SAR to huge cargo and tankers.



Product Range



CL02-11



CL02-12



CL02-22



CL03-11



CL03-12



CL03-22



CL04-02



Remote Control



Wireless Remote Control