

Merv Moriarty

Materials list for the Colour Workshop

The range of colours you are currently using will probably be fine for the workshop. However, make sure you have colours that will give you full control over colour; virtually any colour you wish to include will be useful because the Plotter gives you such a wide range of alternatives.

See below for the recommended list if you're establishing from the beginning.

Paint manufacturers colour names tend to be inconsistent, therefore we suggest you refer to the diagram below showing POSITION OF PIGMENTS ON THE COLOUR WHEEL to select your colours.

Workshop participants: please ensure you are familiar with the Moriarty Colour Wheel & Mixing Plotter.

Go to www.mervmoriarty.com to watch the short video demonstration on how to use the Plotter. Please email or call with any queries.

Colours

A yellow close to the yellow at 60 on the Moriarty Three-Section Colour Wheel

A yellow closer to orange is also useful, about 40 on the colour wheel such as cadmium yellow deep.

A red that's close to 0/360 on the wheel (cadmium red)

A magenta (permanent rose) close to 300 on the wheel.

A blue between 220 & 240 on the colour wheel (ultramarine)

A cyan such as pthalo blue, 180 on the colour wheel.

A green is useful, close to 120 on the colour wheel.

Any earth colours that you like to use can be useful.

A genuine viridian is valuable if you can find it (not viridian hue).

Zinc white or titanium white. You will need plenty - used to lighten the often very dark pigments.

Black is not required.

Paints

For the workshop, gouache paints are ideal but other mediums are also suitable including - oils - pastels oil - pastels - acrylics and water miscible oils. You should use what you are most familiar with. Oils will give the greatest control over colour but fumes are a problem. If you wish to use oil colour, please contact Merv Moriarty 02 6494 1033.

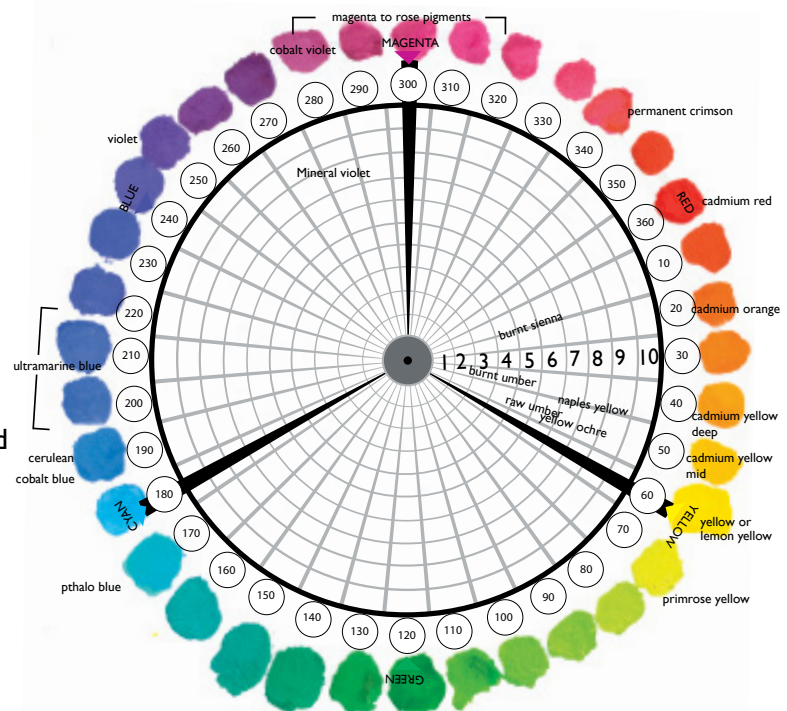
Brushes

You will not need large brushes as we will be working on small easily carried sized paper for studies. I suggest:

- * 1 round - bristle #1 or #2 about 2mm where the ferrule joins the bristle & bristle about 10 mm long
- * 1 filbert or fitch #3 to #4 about 4 to 5mm, bristle length about 13mm long.
- * 1 filbert, fitch or bright about #4 to 6, bristle length 18 to 24mm
- * Water container for rinsing brushes and a paint rag (piece of old sheet or clothing).
- * Charcoal and or pencils as you prefer for making studies in line or tone.
- * Kneadable eraser. Paper A4 and A3 size and a note book.
- * A portable easel, or large enough board with a clip or two to hold your paper.
- * A hat, sun block, water bottle and lunch.

Author of *The Eye's Mind – the artist and the draftsman* and *COLOUR – the definitive guide*

Creator of the *Moriarty Colour Wheel and Mixing Plotter* Available on line and at Brisbane Art Shed



www.mervmoriarty.com

Merv Moriarty | 476 Sapphire Coast Dr. Wallagoot NSW2550 (02)64941033