

SLEEP SACK INSTRUCTIONS

January 2024

Fleece Fabric. Front and back – solid color. Sleeves – may be print.

Neck Ribbing – Cut 1 piece 2-1/2" by 10"

Sleeve Ribbing – Cut 2 pieces 2-1/2" by 5"

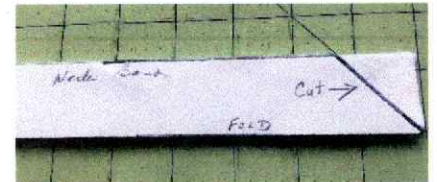
Sewn primarily on serger. Differential may need to be adjusted for fleece fabric. Some machine sewing.

1. Finish center front edge of both fronts with serger. Press 3/4" front facing to wrong side of fabric.

2. Fold sleeve ribbing in half lengthwise. Stitch to bottom of sleeves stretching to fit.

3. Serge sleeves to body back. Serge body fronts to sleeves.

4. Fold neck ribbing in half lengthwise. Cut ends diagonally at 45°. (Shown at right.)



5. Fold neck ribbing in half widthwise to find the center. Match to center of back.

6. Match the pointed end of the ribbing to the neck edge at the fold line for the facing. Fold the facing (right sides together) over the tip of the ribbing. (Shown at right.)



7. Serge the ribbing to the neck edge, stretching the ribbing to fit. (Consider machine basting the ribbing to the neckline to verify that the stretching is even and that the points align correctly. If necessary, make adjustments, rebaste, and then serge.) Press serged seam toward body of garment. (Photos below.)





8. Turn front facing back to right side (wrong sides together). Stitch facing down along serged edge by sewing machine.

9. Lap fronts over each other 3/4" and stitch fronts by sewing machine from the bottom up 4", then across lap, and back down to bottom to hold the bottom front



edges together, stitching through all thicknesses. (For gender-neutral and boy's sacks, lap left front over right. For girls' sacks, lap right front over left.) (Shown at right.)

10. Right sides together, serge seam from edge of ribbing on sleeve to bottom edge of sack. Repeat for other side. Right sides together serge across the bottom.

11. Open the corner and align the seam over the fold. Serge raw edges. (Photos below.)



12. Put 5 snaps (size 16 or plastic snaps) down the front of the sleep sack, one at the neck edge and the others spaced 3-1/4 inches apart. Sleep sacks may be turned in without snaps. (Shown at right.)

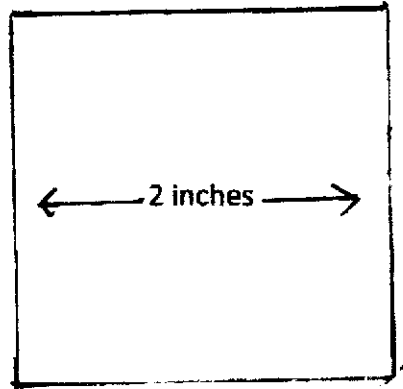
13. Verify that all thread tails are secure and sewing threads are trimmed. Make sure all edges are caught so there are no openings in seams.



2024

Sleepsack
Front – Section 1
Cut 2 of Fleece

← Stretch →

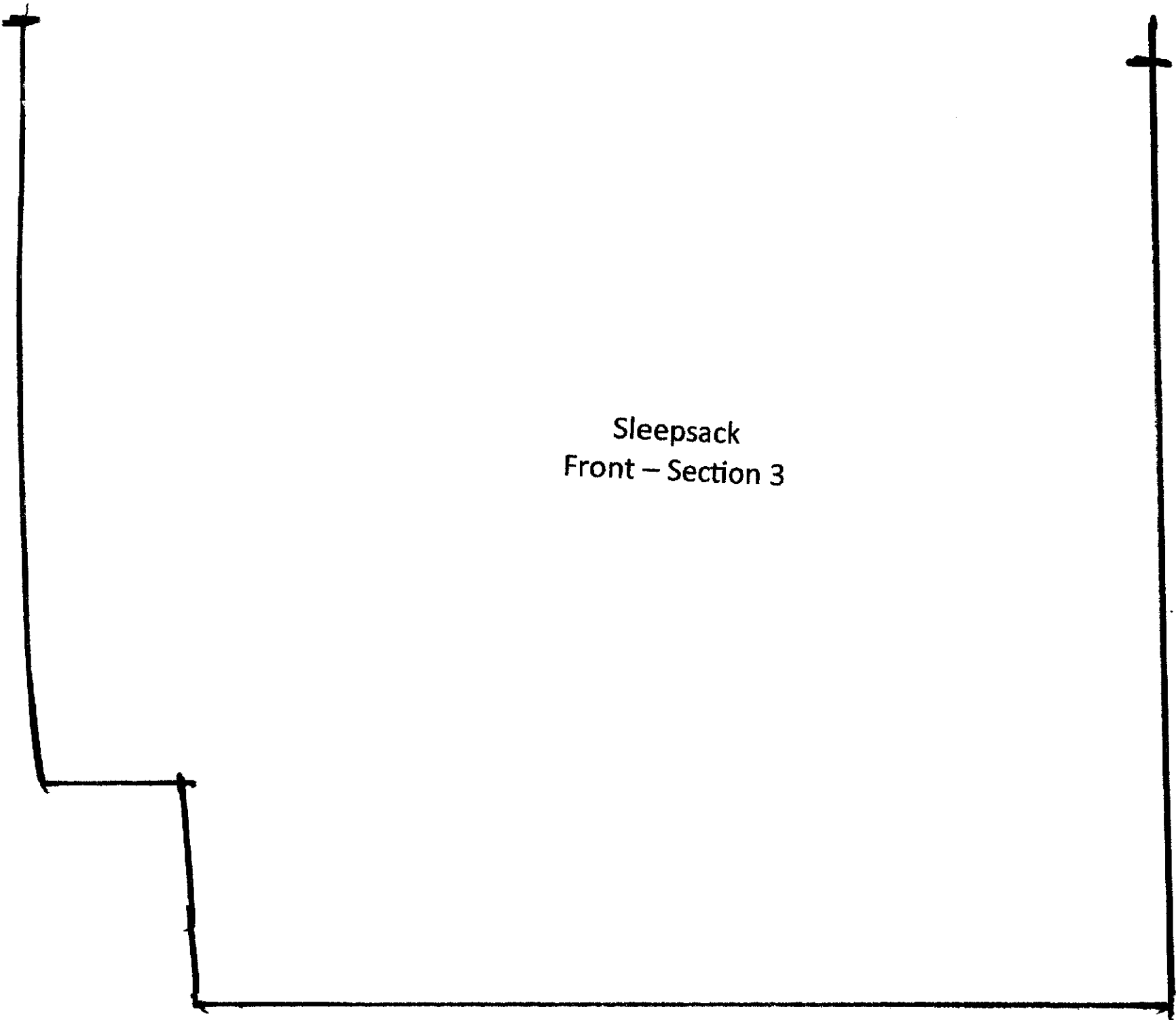


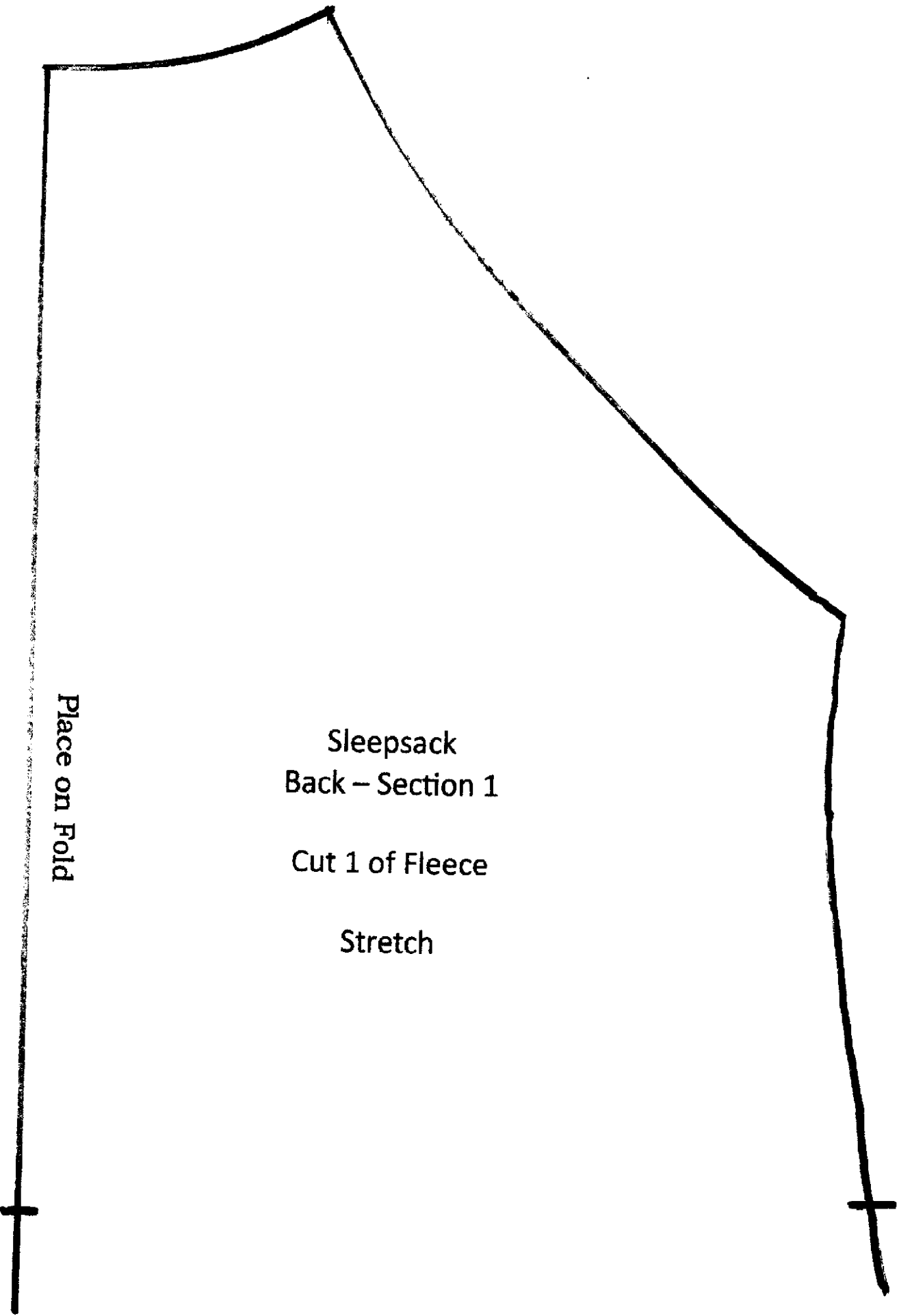


Sleepsack
Front - Section 2



Sleepsack
Front – Section 3





Place on Fold

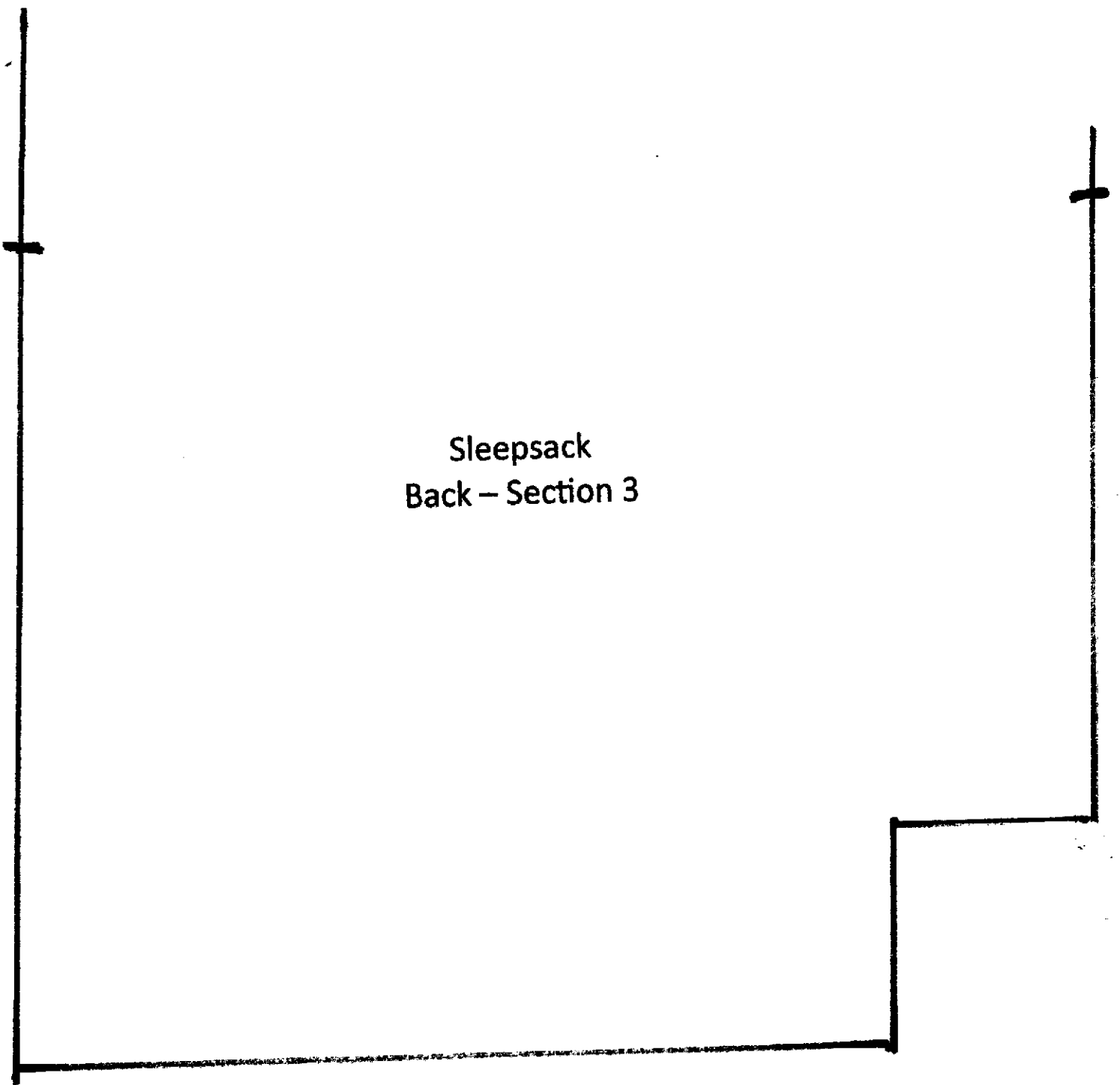
Sleepsack
Back – Section 1

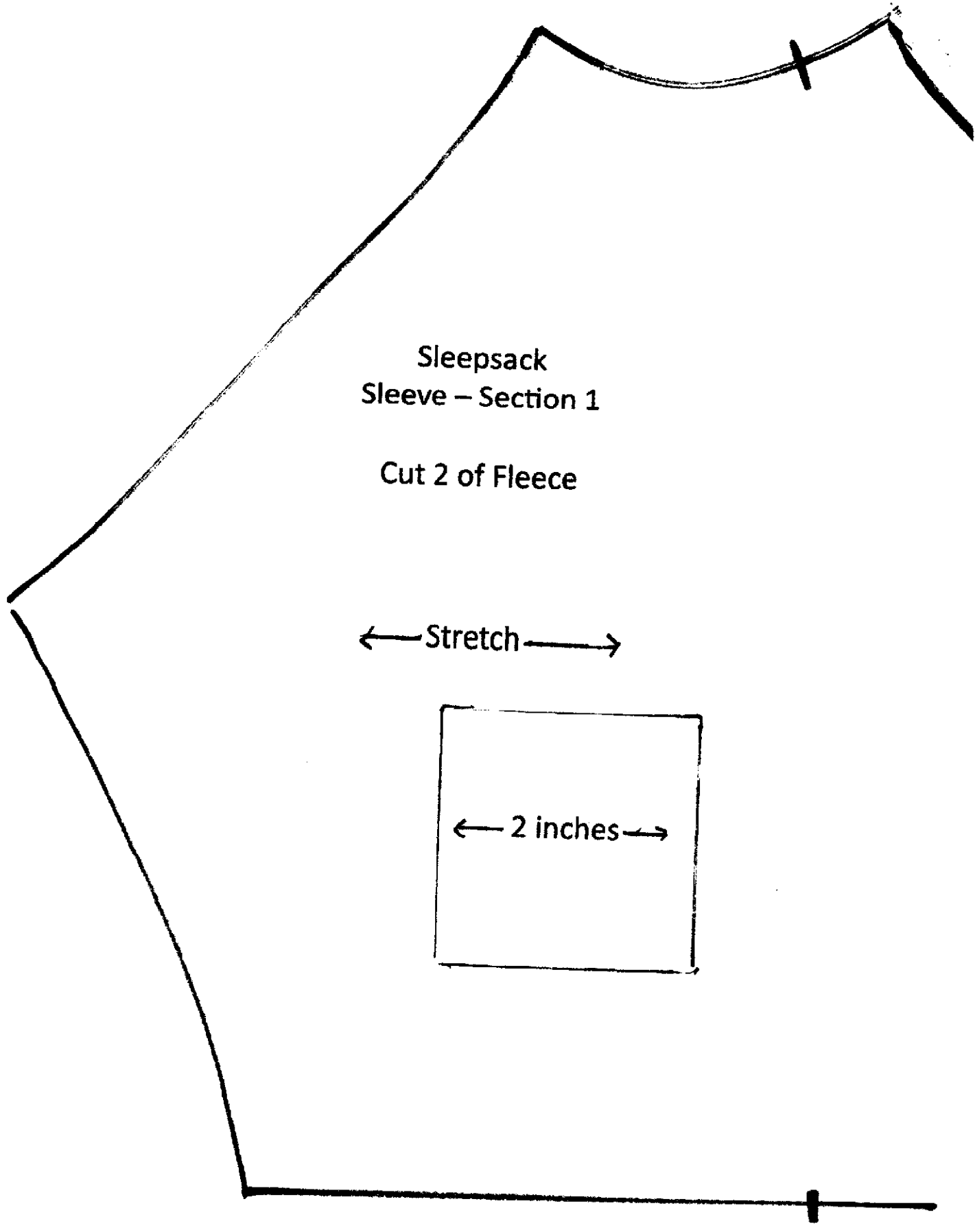
Cut 1 of Fleece

Stretch

Sleepsack
Back – Section 2

Sleepsack
Back – Section 3

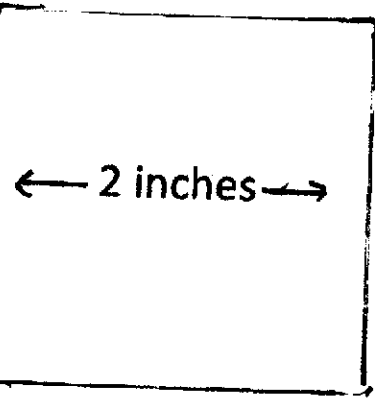




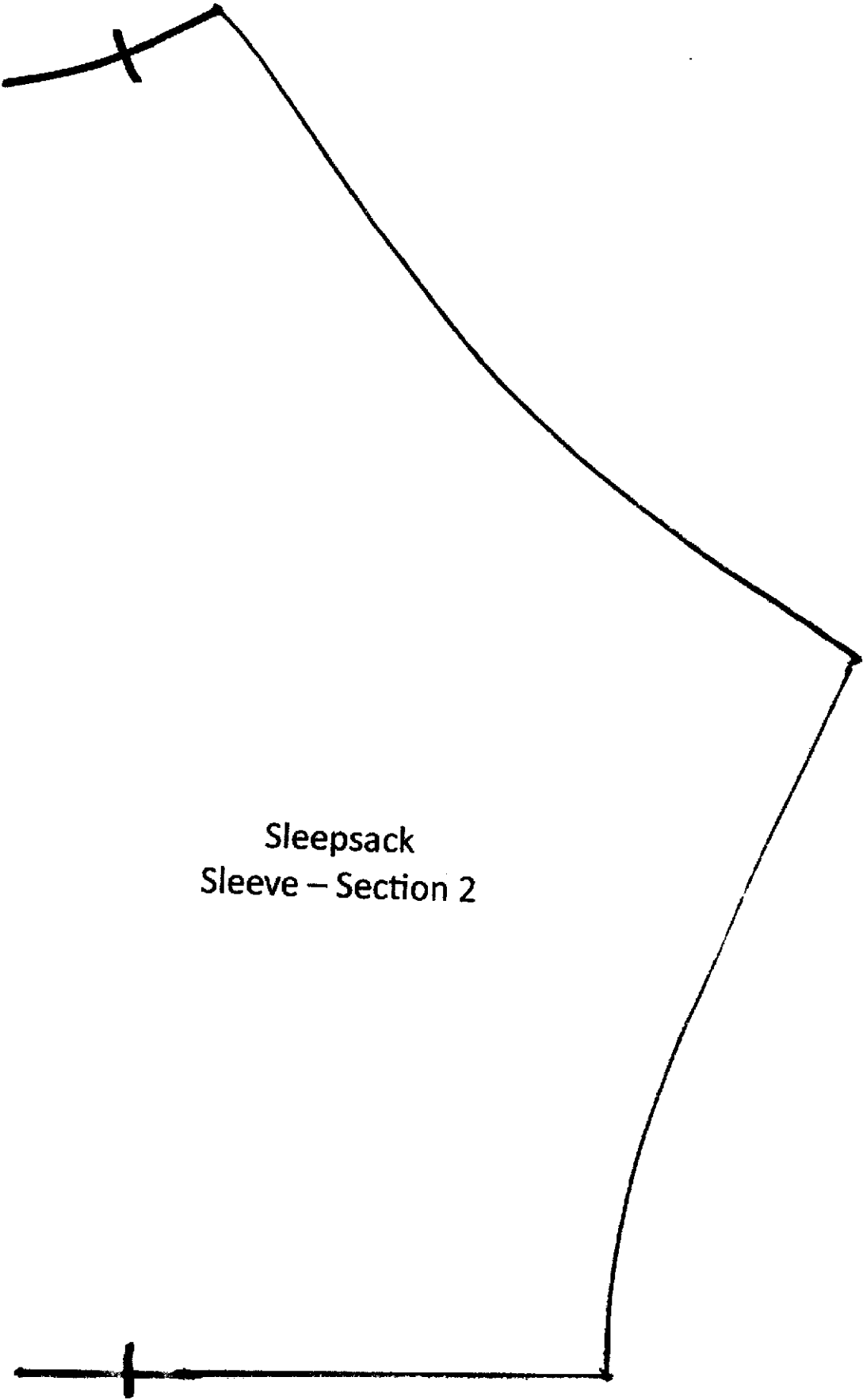
Sleepsack
Sleeve – Section 1

Cut 2 of Fleece

← Stretch →



← 2 inches →



Sleepsack
Sleeve - Section 2