

# DIAPER SHIRT INSTRUCTIONS

## FABRICS

Woven cotton 15-in. x 32-in.  
Stretch knit ribbing 2.5-in. x 10-in.  
Fusible interfacing 3/4-in. x 12-in. (optional for heavier fabrics)

## NOTIONS

2 Snaps

## MACHINES

Serger  
Sewing machine  
Iron

## GENERAL INSTRUCTIONS

Unless otherwise instructed, serge all seams with the serger blade trimming only a slight edge of the woven fabric.

## CONSTRUCTION

### CUTTING

If your yardage piece is too large to easily cut the pattern pieces, complete the following steps.

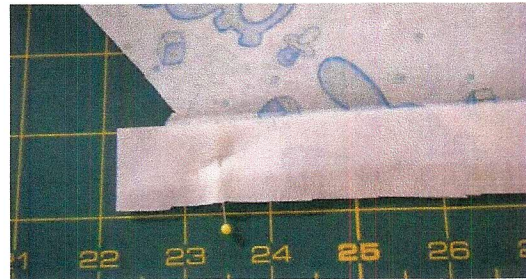
1. Cut woven fabric to size shown above.
2. Fold short edge of fabric in toward center so that you can cut two front panels at the same time.
3. Use the remainder of the fabric to cut the back panel.

### SEWING

1. With right sides of fabric together, serge shoulder seams.
2. With right side of fabric facing up and hand-pressing shoulder seam toward the back panel, serge sleeve edges.
3. On each front panel, press the interfacing portion of the fabric along fold line with wrong sides together.
4. Press hem of sleeves up 1/4- to 3/8-in.
5. Press shoulder seams toward back panel.



6. On each front panel, place the fusible side of the interfacing strip to the wrong side of fabric, matching the raw edge of the fusible interfacing to the fold line. Pin in place.

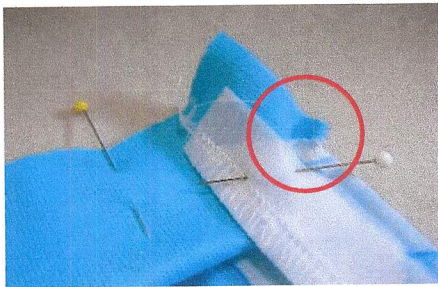


7. If necessary, trim the ends of the interfacing to the same height as the fabric.



8. On each front panel and with right side of fabric facing up, serge edge of fabric facing and interfacing together.

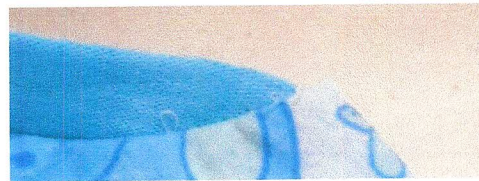
9. Machine stitch hem of sleeves in place.  
*Note: Verify that the sewing machine needle will catch the serged edge of the fabric.*
10. Fold neck ribbing in half lengthwise, and then fold in half width-wise to find the center of ribbing width. Place a pin at this center mark along the cut edge of the ribbing.
11. Fold neck edge of shirt in half to find the center of the neck edge and mark with a pin.
12. Matching center marks of the cut edge of ribbing and neckline, pin ribbing to the right side of the fabric.
13. Match ends of ribbing with center front fold line of woven fabric interface and pin in place.
14. Stretch ribbing to match the length of the neck edge of the shirt and pin in place.
15. Fold front edge of the fabric interface over the ribbing on the fold line with right sides together. Pull folded edge of the ribbing out beyond the fold of the fabric interface a scant amount so that the ribbing will create a dog-ear appearance when sewn.



16. Consider machine basting the ribbing to the neck line to verify that the stretching is even and that the dog-ears align correctly. If necessary, make adjustments and re-baste.



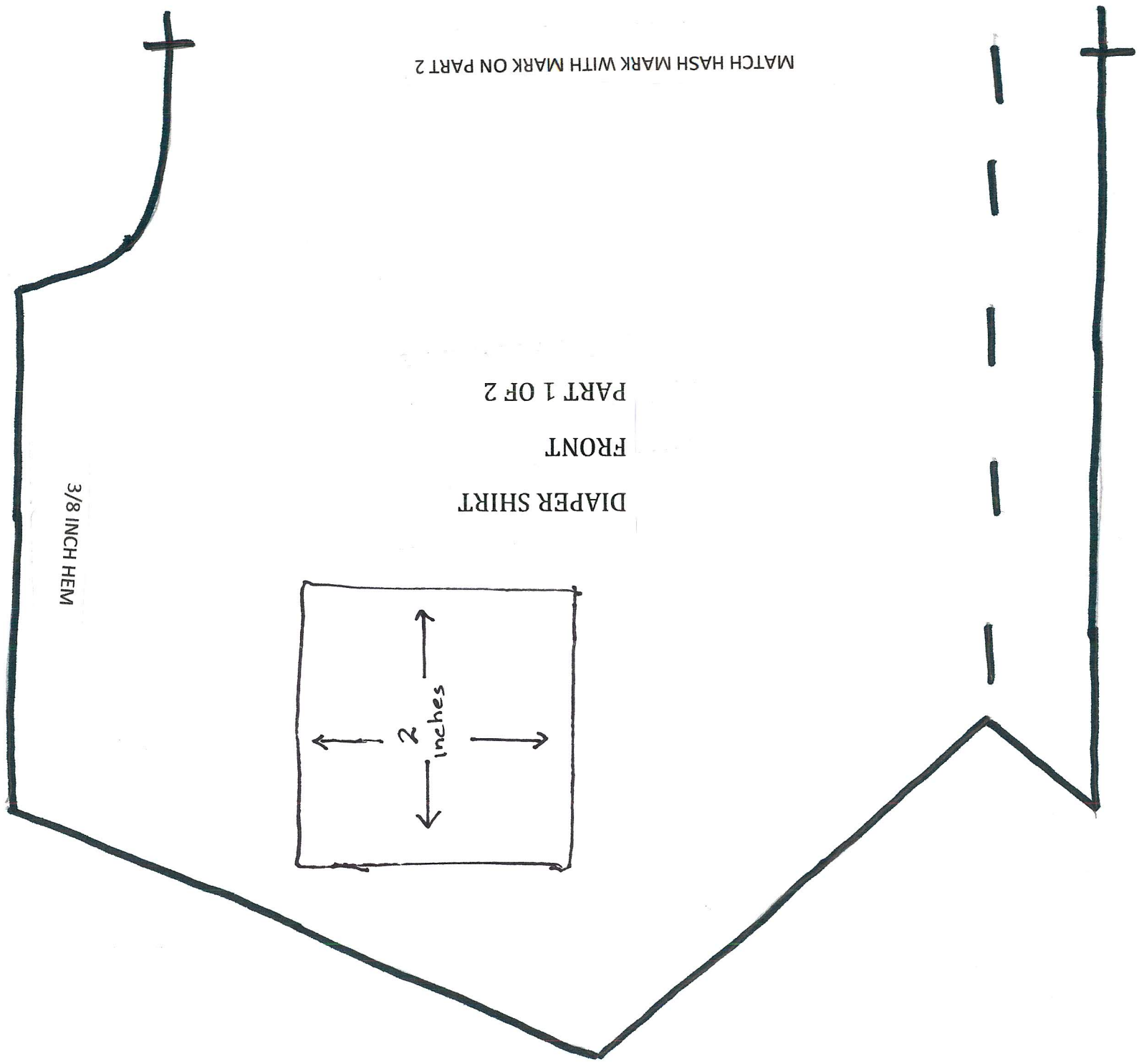
17. Serge ribbing to neckline.
18. Secure thread tails for about 1 inch on the fusible interfacing side of the serger seam at the neck edge.
19. Turn the interfacing fold at the front center right-side out and push fabric into the points at neckline for a crisp corner on both front panels. Remove basting stitches if necessary.
20. With fabric interface folded over fusible interfacing, press to fuse the interfacing to the fabric on both front panels.



21. On wrong side of shirt, press serged neck seam toward bottom of shirt.
22. Serge both side seams.
23. Secure thread tails for about 1 inch inside the wrong side of the serger seam at the sleeve edge.
24. With right side of fabric up and hand-pressing side seams toward the back panel of the shirt, serge the bottom edge of the shirt.
25. Secure thread tails for about 1 inch inside the wrong side of the serger seam at the hem ends.
26. Press hem up 1/2-in.
27. Machine stitch hem in place.

#### FINISHING

1. For gender-neutral and boy's shirts, lap left front over right; for girl's shirts, lap right front over left.
2. Attach one snap at the neck and a second snap 4 inches below the one at the neck.
3. Verify that all thread tails are secure and sewing threads are trimmed.



DIAPER SHIRT

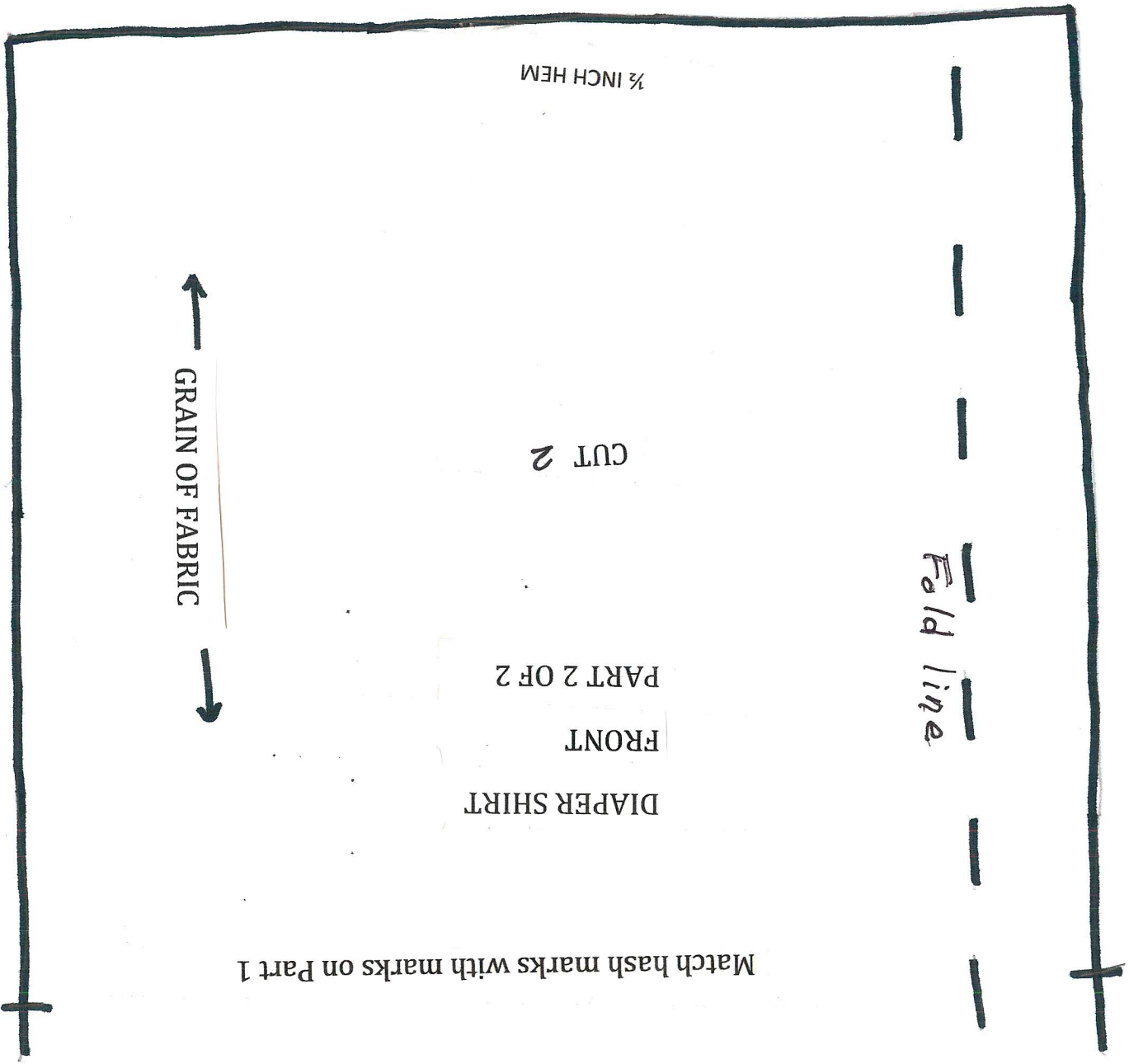
FRONT

PART 1 OF 2

MATCH HASH MARK WITH MARK ON PART 2

3/8 INCH HEM

2 inches



Match hash marks with marks on Part 1



PLACE ON FOLD

DIAPER SHIRT

BACK

PART 1 OF 2

CUT 1

Match hash marks with marks on Part 2

Match hash marks with marks on Part 1

↑  
GRAIN OF FABRIC  
↓

DIAPER SHIRT

BACK

PART 2 OF 2