

RAGLAN SLEEVE BABY SWEATER

Baby Yarn - Size 5 and 7 needles

To make buttonhole K1, K2tog, ⁴⁰K1. On neck ribbing for Left side make buttonhole on row 4. For Right side make buttonhole on row 5. On rest of sweater depending on which side, Row 19 or 20 and 39 or 40. Bottom ribbing Row 3 or 4.

Neck: With size 5 needles cast on 50 sts. Row 1: K4, P2, K2 across to last four sts. K Row 2: K4, K2, P2 across to last four sts K4. Continue for 7 rows. Change to size 7 needles.

Raglan Shaping: Row 1 (inc row): K4 for front band, K5 for right side front, k in front and back of next st, (inc), place marker on needle inc in next st, K4 for sleeve, Inc in next st, place marker on needle, inc in next st, K16 for back, inc in next st, place marker on needle, inc in next st, K4 for sleeve, inc in next st, place marker on needle, inc in next st, K5, K4 for band.

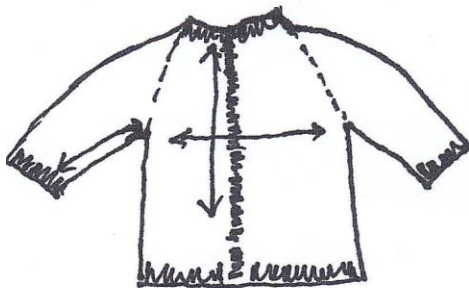
Row 2: K4, P across slipping markers to last 4 sts, K4

Row 3: K4 *K to within one st of marker, inc in next st, sl marker, inc in next st; repeat from *3 times, K to end of row.

Repeat rows 2 and 3 until 22 rows are completed. Don't forget to work buttonhole on row 19 or 20.

Row 23: K4, K17, cast on 4 sts, place next 28 sts on holder for sleeve. K to next marker, cast on 4 sts, place next 28 sts on holder for sleeve, K17, K4. Work in stockinette st except for band (always k first and last 4 sts on every row) until completing 56 rows. Change to size 5 needles and work in ribbing (same as neck) for 7 rows. Bind off.

Sleeve: With right side facing and using size 7 needles slip sts from holder onto needle. Cast on 2 sts, K across, cast on 2 sts. Work in stockinette st until Row 7. K2 tog (dec) K o last 2 sts, K2 tog. Continue stockinette st (dec on rows 13, 19 and 25) until completing 16 rows. Change to size 5 needle and work in ribbing for 7 rows. Bind off. Repeat for other sleeve.



ACROSS CHEST AT UNDERARM 9" to 10"
LENGTH FROM NECK TO BOTTOM 10" to 11"
SLEEVE FROM UNDERARM TO BOTTOM
OF RIBBING 5 1/2" to 6"