

## SLEEPER INSTRUCTIONS

July 2008

Cotton Knit Fabric. If being used for a boy, please do not use material with flowers or pink or purple in it.

Ribbing. 2 pieces 2 ½" x 5" for sleeves and 1 piece 2/½" x 10" for neck.

Finish center front edges with serger attaching fusible interfacing. Do not press down edge of sleeper at this point.

Serge ribbing to bottom edges of sleeves. Pull only ribbing.

Stitch sleeves to body back.

Stitch body fronts to sleeves.

Fold neck ribbing in half lengthwise then in half widthwise and mark center. Pin ribbing to neck edge matching center of ribbing with center back.

Match ends of ribbing with center front along fold line. Fold front edge over ribbing on fold line right sides together having the "dog ear" out past the folded edge of garment facing. Serge ribbing to neck edge.

Turn fold back to inside. Press to secure interfacing. Lap folds over each other. Pin at crotch making certain front overlaps correctly.

With right sides together begin stitching at the bottom of one sleeve and stitch all the way around to the bottom of the other sleeve. Secure tails. Turn garment right side out.

Place at least 4 snaps one at neck edge, the others spaced 4" apart on the front of sleeper.

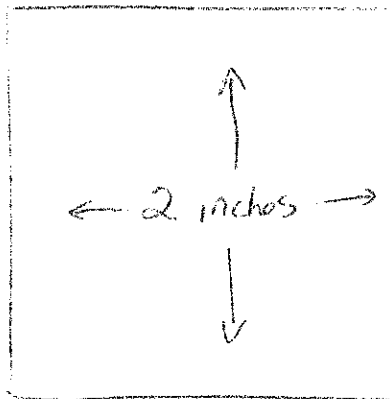
Please do not turn in sleepers without snaps.

SLEEPER  
FRONT

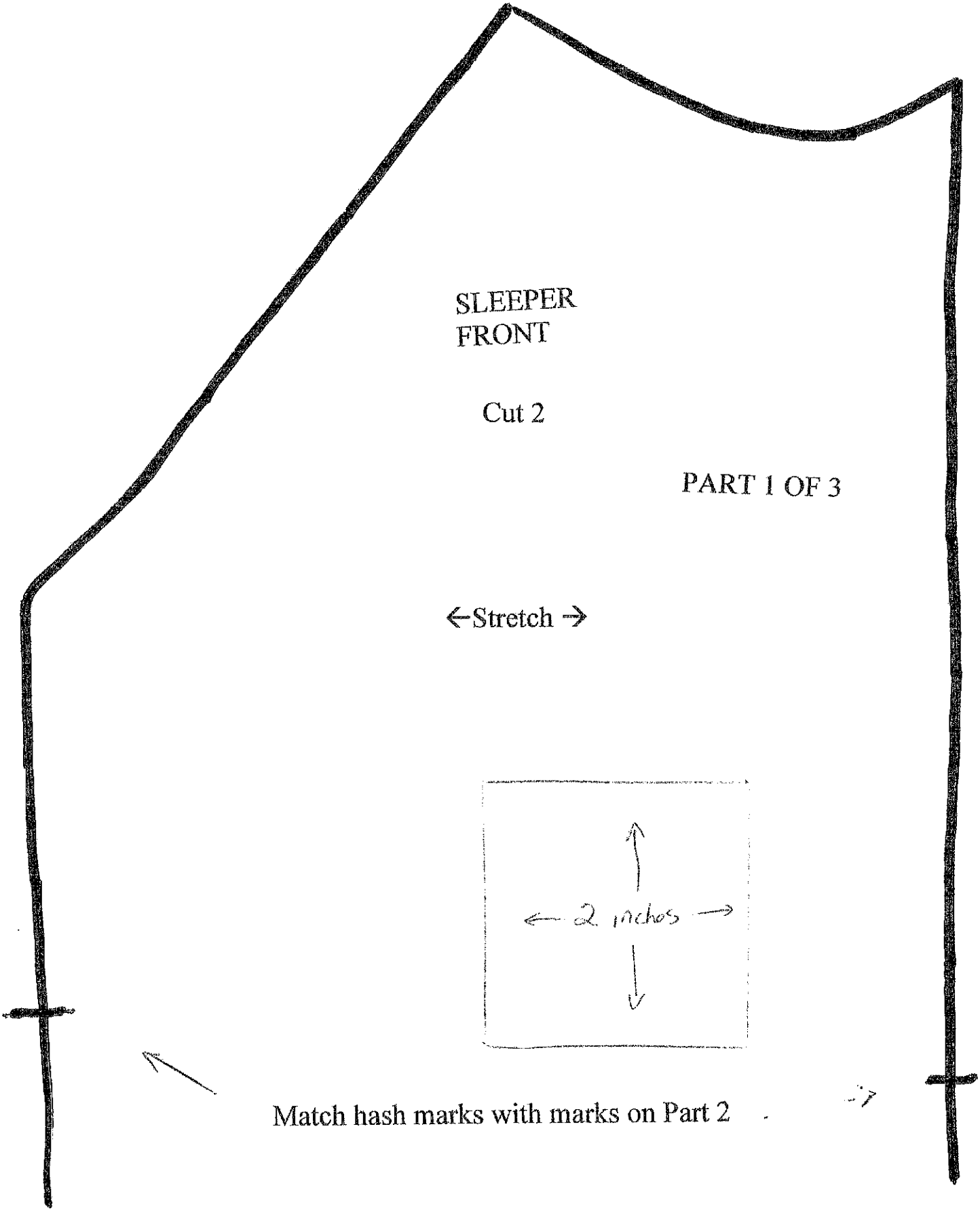
Cut 2

PART 1 OF 3

←Stretch →



Match hash marks with marks on Part 2

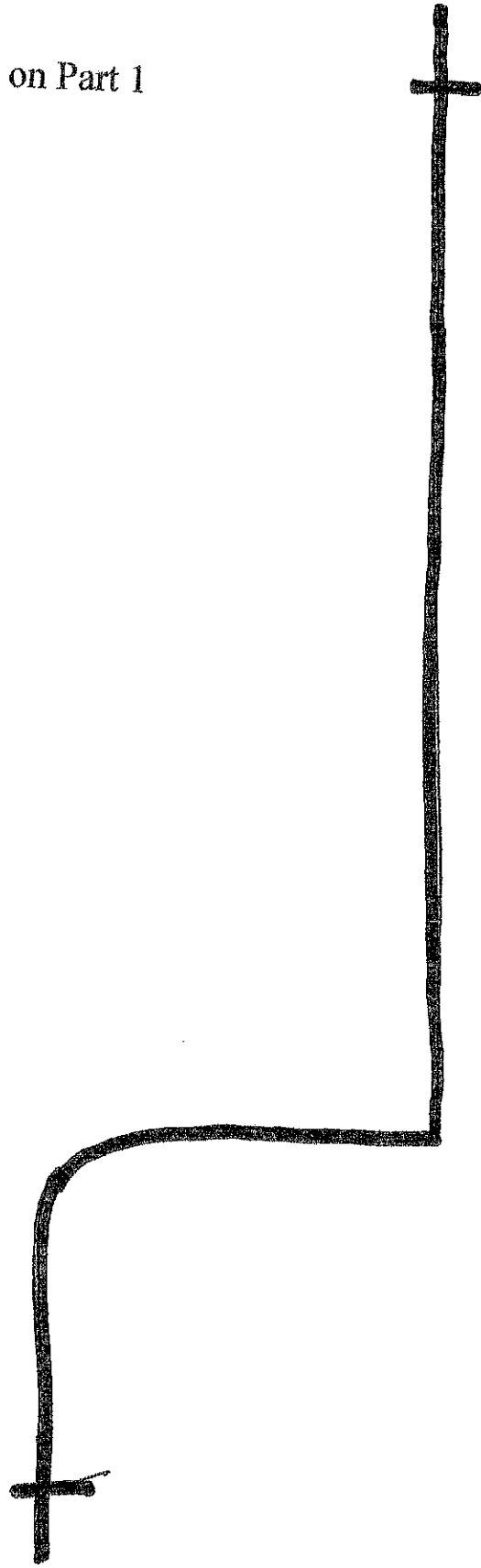


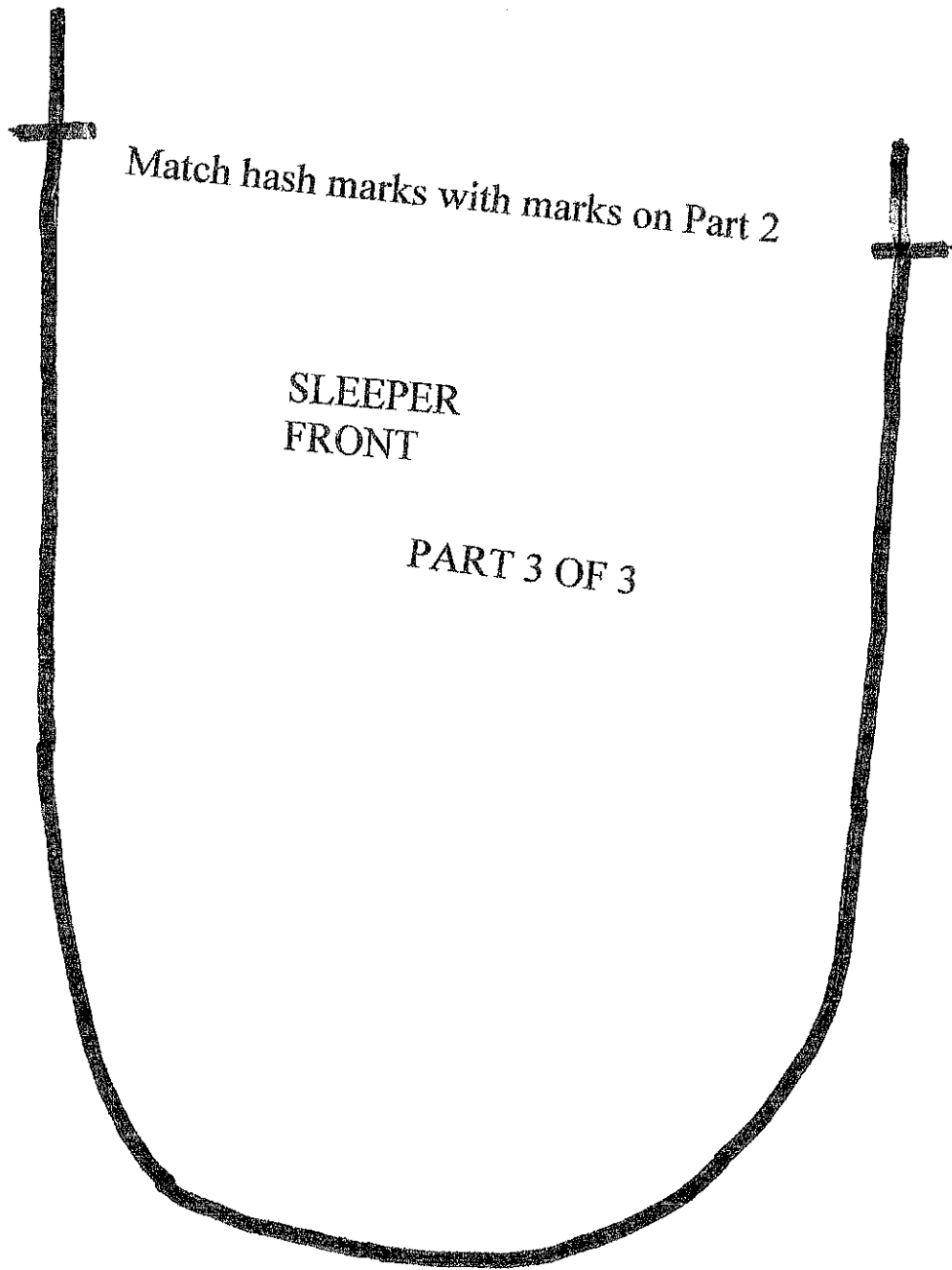
Match hash marks with marks on Part 1

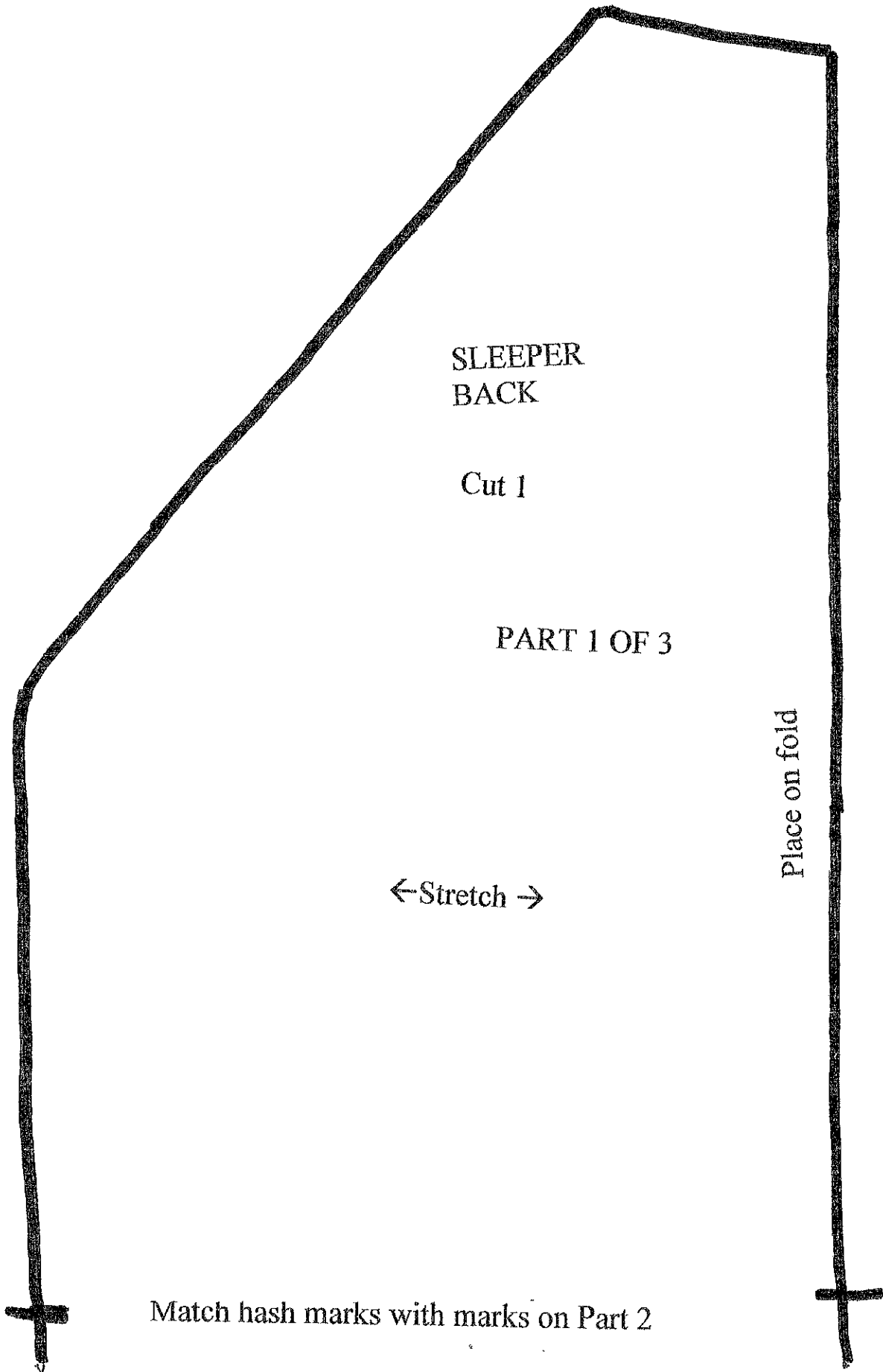
SLEEPER  
FRONT

PART 2 OF 3

Match hash marks with marks on Part 3







SLEEPER  
BACK

Cut 1

PART 1 OF 3

Place on fold

←Stretch →

Match hash marks with marks on Part 2

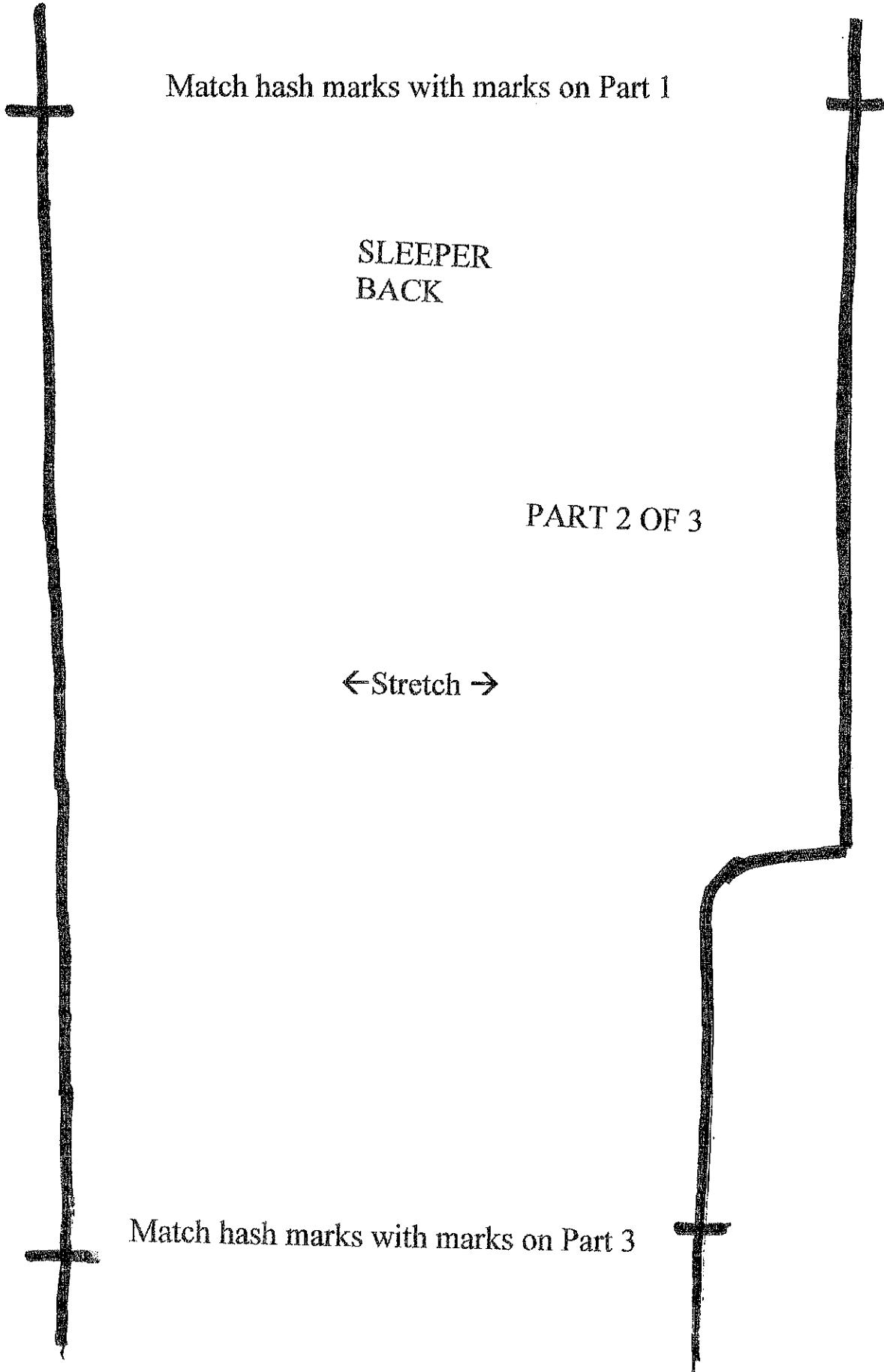
Match hash marks with marks on Part 1

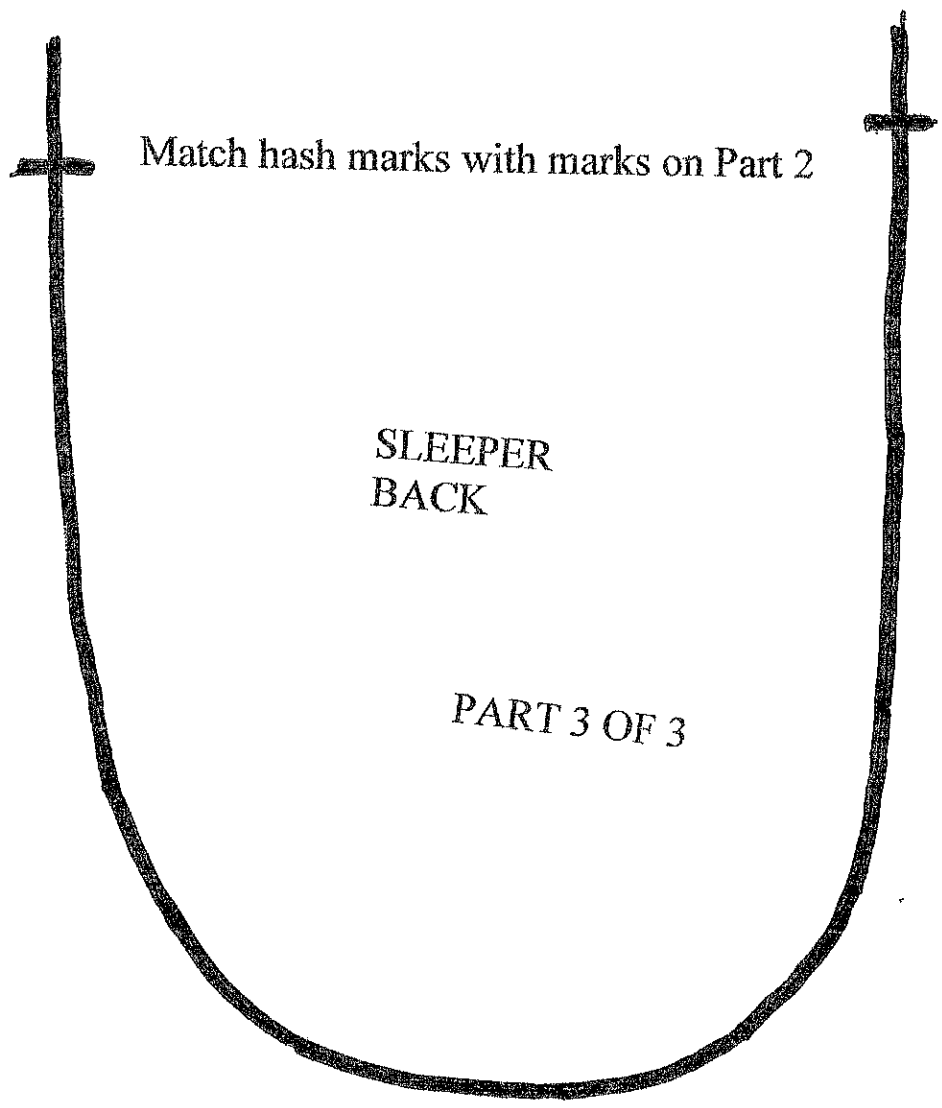
SLEEPER  
BACK

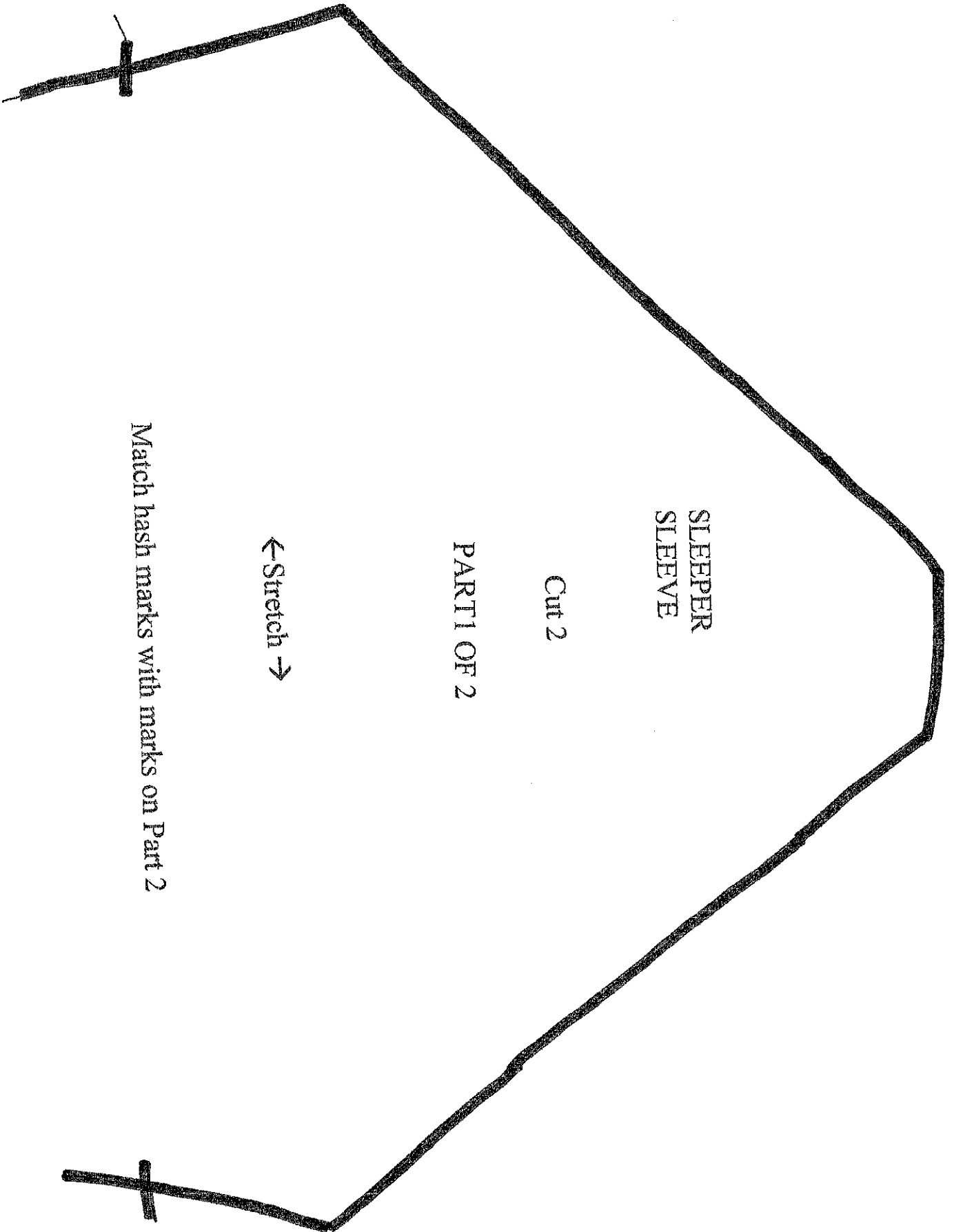
PART 2 OF 3

←Stretch →

Match hash marks with marks on Part 3







SLEEPER  
SLEEVE

Cut 2

PART 1 OF 2

← Stretch →

Match hash marks with marks on Part 2



Match hash marks with marks on Part 1

SLEEPER  
SLEEVE

PART 2 OF 2

