

## SLEEP SACK INSTRUCTIONS

July 2008

Fleece Fabric

Neck Ribbing - Cut 1 piece 2 ½" x 10"

Sleeve Ribbing - cut 2 pieces 2 ½" x 5"

Serger set-up: 3 thread, 2 ½ stitch length. Differential may need to be adjusted according to fabric.

Finish center front edge of both fronts with serger.

Serge ribbing to bottom edges of sleeves.

Serge sleeves to body back.

Serge body fronts to sleeves.

Fold neck ribbing in half lengthwise and then in half widthwise.

Pin ribbing to neck edge matching center of ribbing with center back.

Match ends of ribbing with center front along fold line (¾" from front edge).

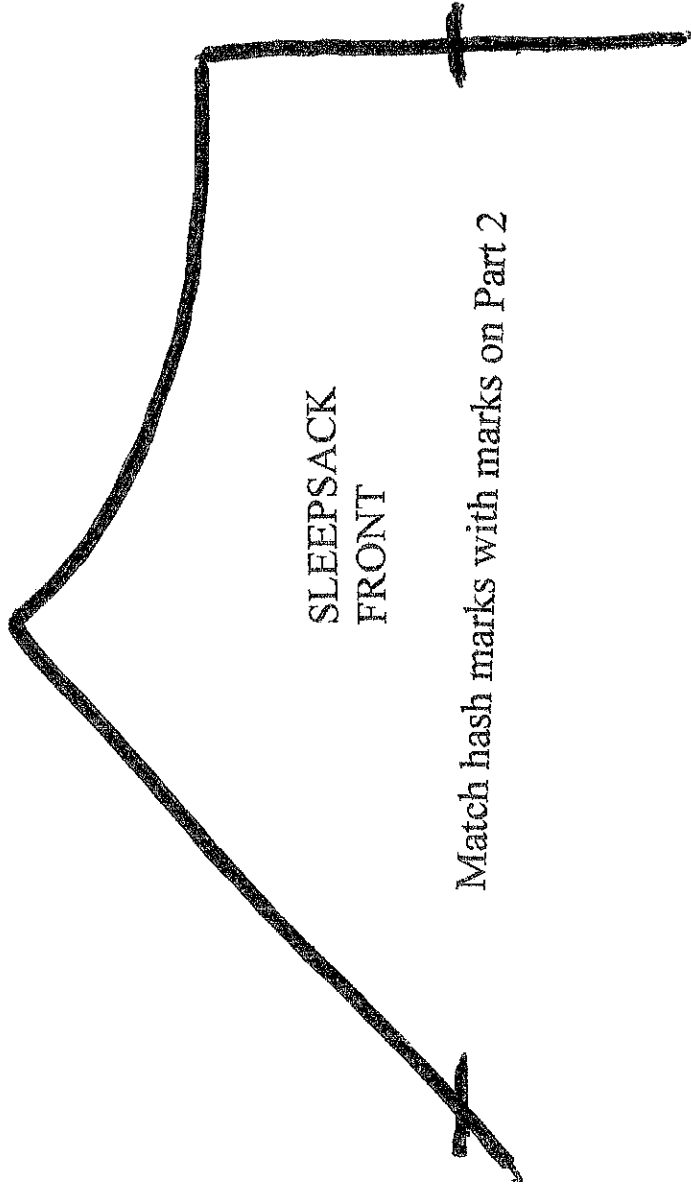
Fold front edge over ribbing on fold line with right sides together and having the "dog ear" sticking out past the folded edge of garment facing. Do the same for other edge.

Serge neck seam. Turn front facing back to right side. If desired, stitch facing down along serged edge by sewing machine. Lap fronts over each other ¾" and stitch fronts by sewing machine up from the bottom approximately 3" to 4" to hold the bottom front edges together.

Right sides together serge seam from edge of ribbing on sleeve to bottom edge of sack. Repeat for other side. Right sides together serge across the bottom.

Fold corners of bottom (right sides together) - similar to the tote bag bottom to form a box - and serge.

Affix snaps down the front. Make sure all edges are caught so there are no openings in seams and all tails are secure.



SLEEPSACK  
FRONT

Match hash marks with marks on Part 2

PART 1 OF 4

Match hash marks with marks on Part 1

SLEEPSACK  
FRONT

PART 2 OF 4

Cut 2

Match hash marks with marks on Part 3



Match hash marks with marks on Part 2

SLEEPSACK  
FRONT

PART 3 OF 4

← Stretch →

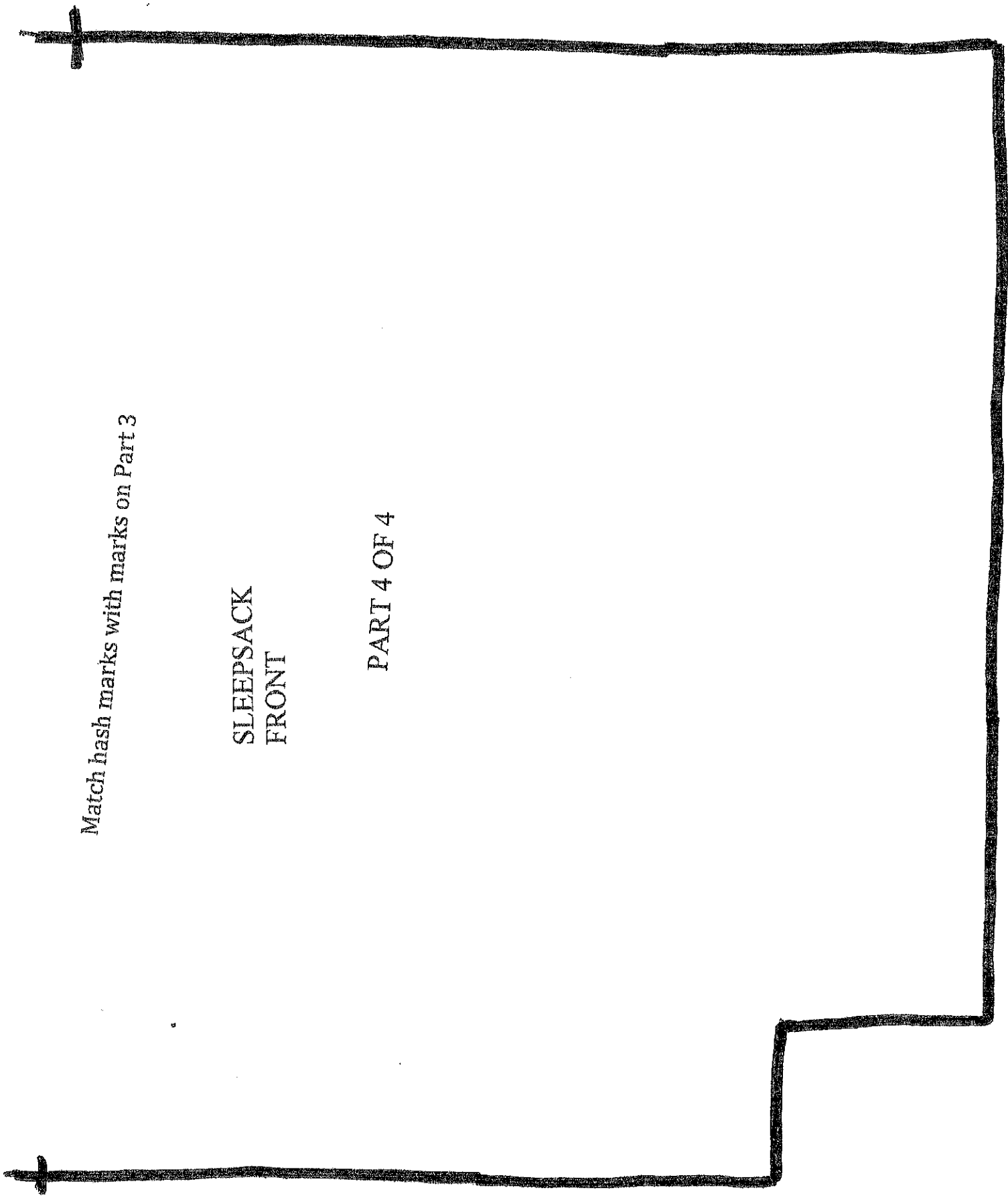
Match hash marks with marks on Part 4

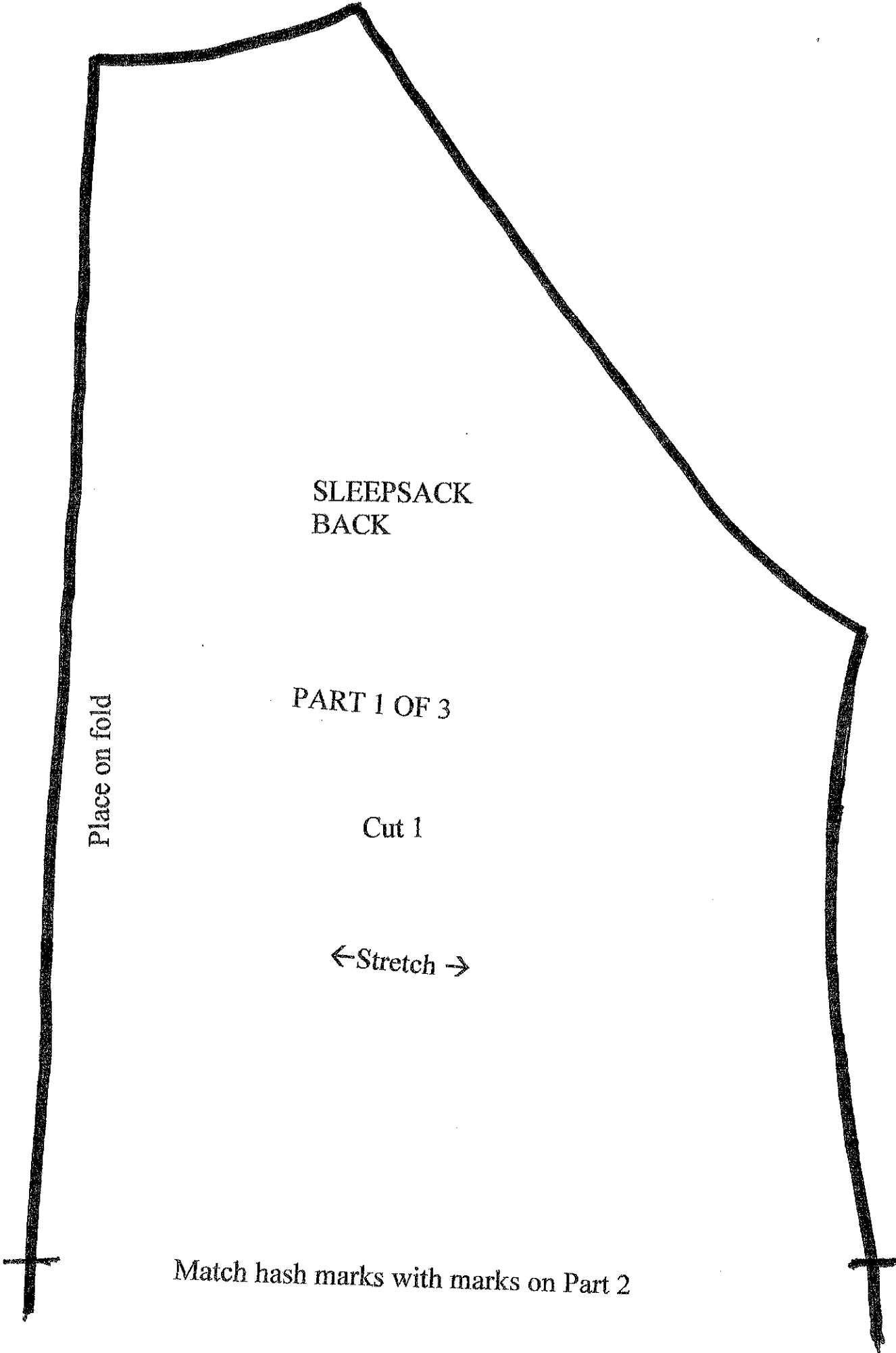


Match hash marks with marks on Part 3

SLEEPSACK  
FRONT

PART 4 OF 4





SLEEPSACK  
BACK

PART 1 OF 3

Cut 1

←Stretch →

Place on fold

Match hash marks with marks on Part 2

Match hash marks with marks on Part 1

SLEEPSACK  
BACK

PART 2 OF 3

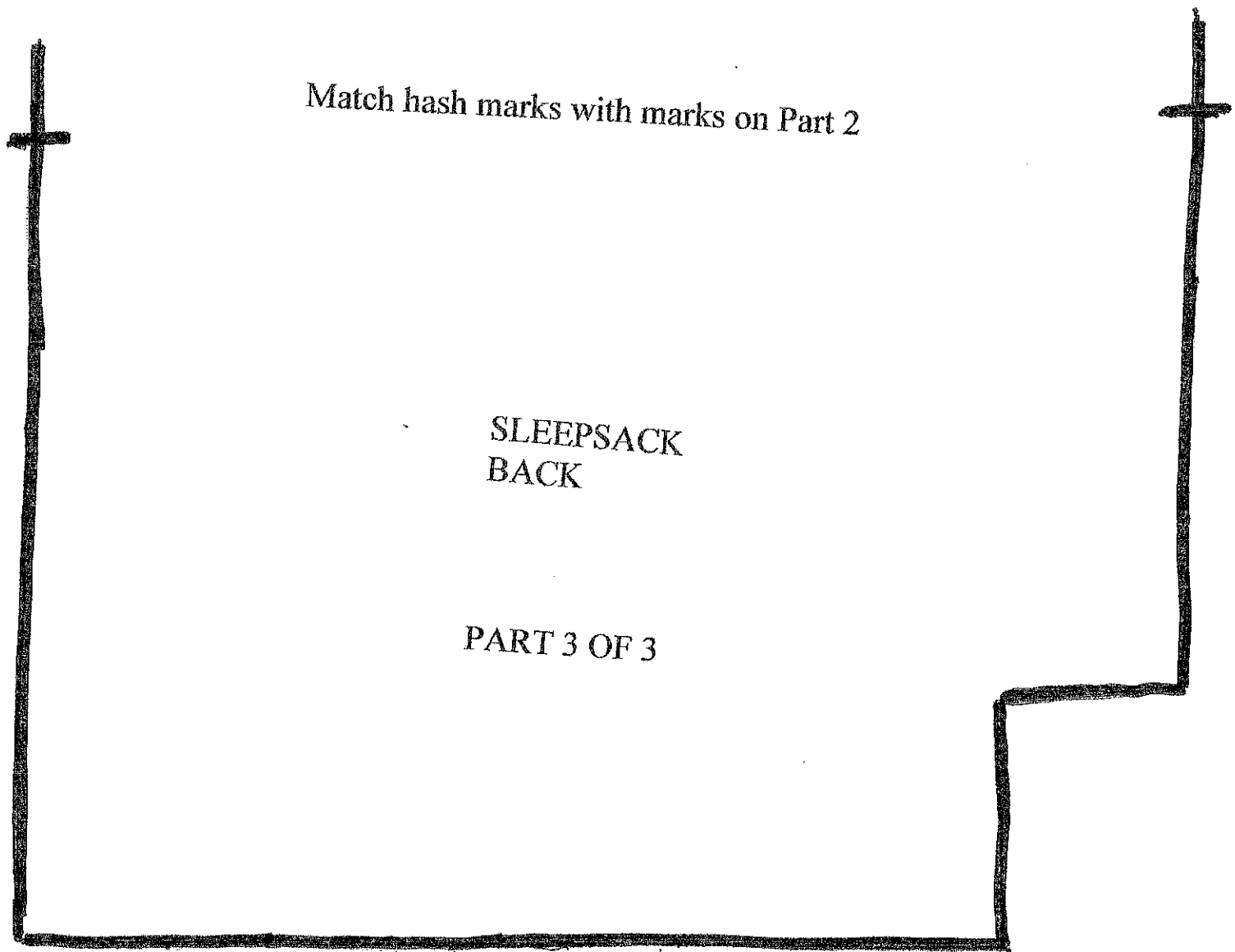
Match hash marks with marks on Part 3



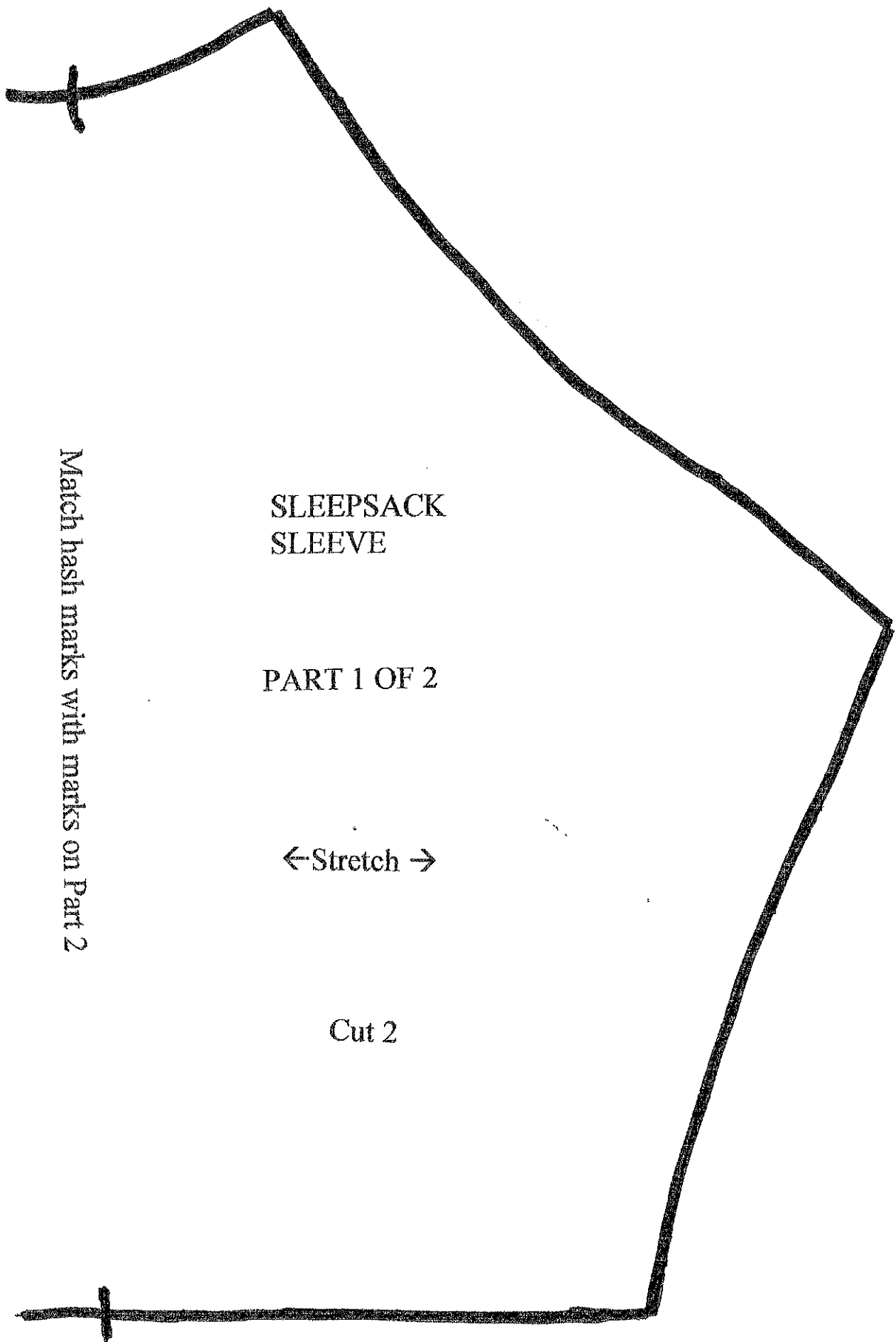
Match hash marks with marks on Part 2

SLEEPSACK  
BACK

PART 3 OF 3







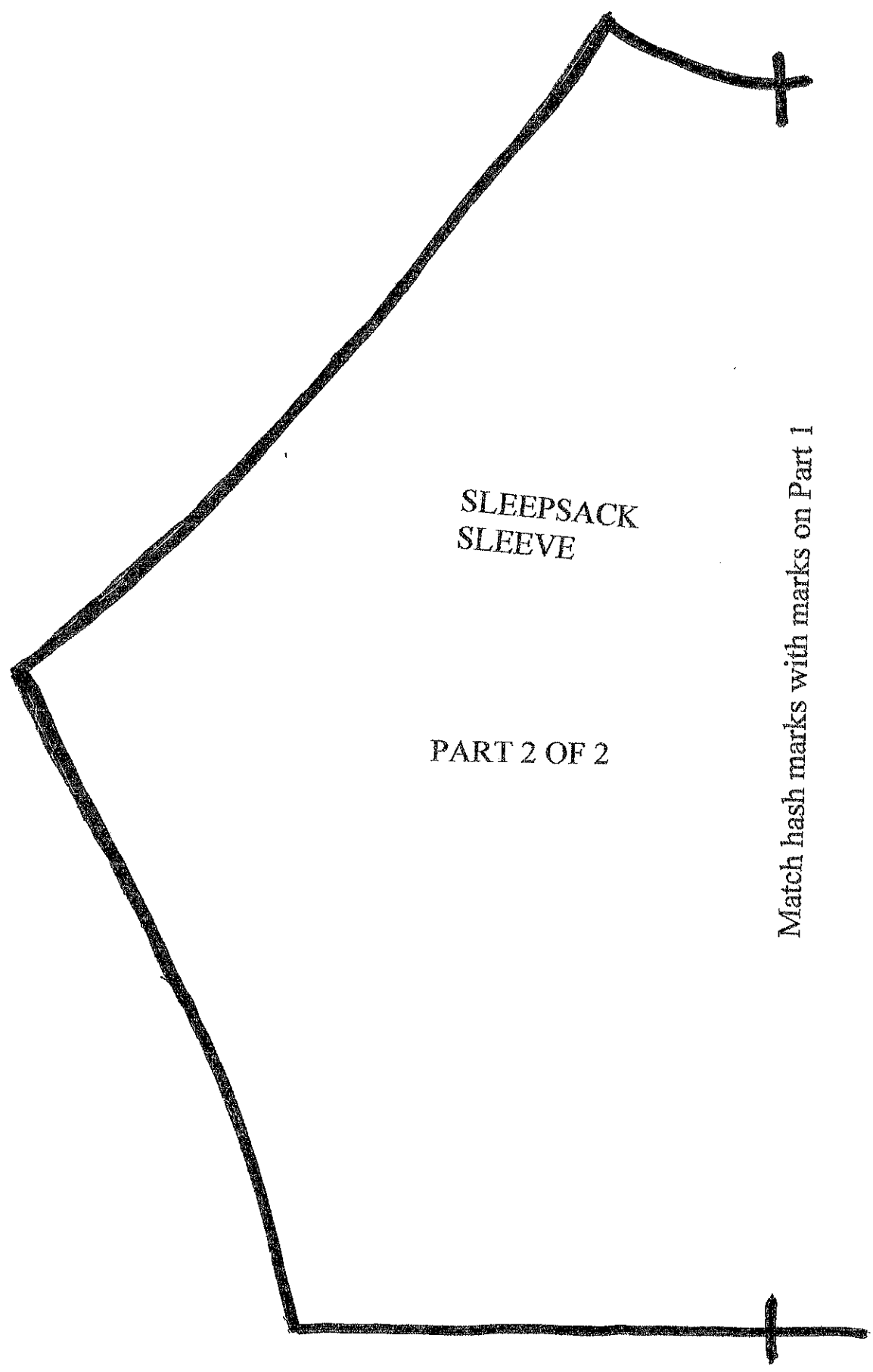
SLEEPSACK  
SLEEVE

PART 1 OF 2

←Stretch →

Cut 2

Match hash marks with marks on Part 2



SLEEPSACK  
SLEEVE

PART 2 OF 2

Match hash marks with marks on Part 1