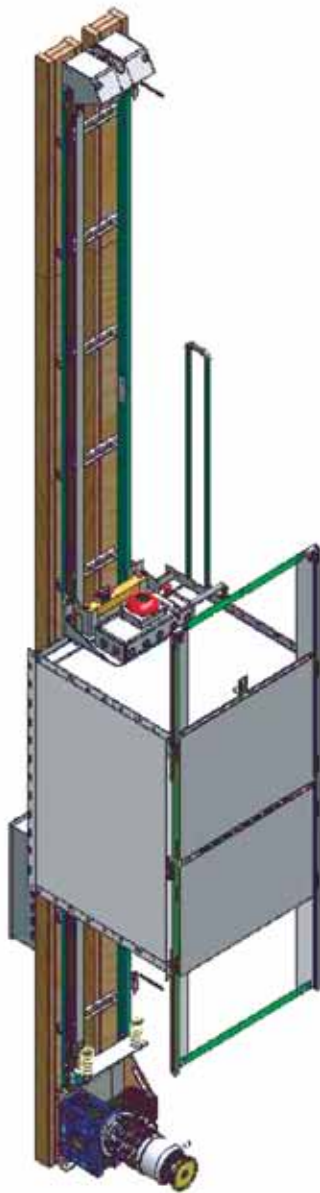


## 500# Commercial Dumbwaiter



**Capacity** - 500 lbs.

**Travel** - Up to 50 ft. (18" minimum)

**Stops** - 2 to 5 stops

**Nominal Speed** - 60 feet per minute

**Electric Supply** -230 volts, 30 amp,  
single phase, 60 HZ

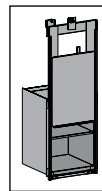
**Powerhead** - 3 HP Continuous duty motor  
universal mount

**Cable** - 3/16" diameter steel cable

**Hoistway Door Interlocks** - Required at  
each landing

**Car** - Powdercoated steel (standard)  
Stainless Steel (optional)

**Car Gate Options** -



Bi-Parting (standard), Slide Up (optional)

**Additional Options** - contact your dealer



Products and illustrations shown may not be standard. Specifications describe equipment, which is either standard or optional. Stated ratings are based on standard equipment. Specifications and design are subject to change without notice.