

Fixed Ceiling Lift V4

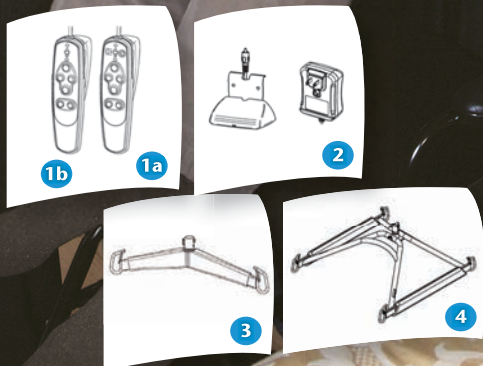
The V4 is a fixed ceiling lift that offers a lifting capacity of :
440 lb (200 kg)

With a BHM sling, it is intended for people whose pathology requires an assistance with mobility by offering a partial or total support according to the need.



# Product	Description	Market
9100001	V4 - 4 ways	North America
9100008	V4 - 4 ways	Europe & United Kingdom
9100209	V4 - 2 ways	North America & United Kingdom

√ = Included / o = Optional



# Part	Description	9100001	9100008	9100209
1a	700.13600 Hand Control - 2 Way			√
1b	700.13650 Hand Control - 4 Way	√	√	
2	700-15501 Charging Station	√	√	√
3	700.05490 Carry Bar	√	√	√
4	700-05580 4-point Spreader Bar	o	o	o



Features

Weight	12.7 kg / 28 lb / 2 st
Lifting capacity	200 kg / 440 lb / 31.49 st
Soft start & stop movement	
Return to charge function on handset	

Safety Features

Emergency lowering device	Manual & electric
Device for emergency stop of the mechanism	Helps to prevent freefalls
Emergency Stop Pull Cord	

Technical Specifications

UL STD 2601-1 / ISO 10535 / CSA C22.2 No. 601.1 - M90 / IEC 60601-1	
Vertical displacement speed	3.5 cm/sec (1.4 in/sec) at 200 kg / 440 lb / 31.49 st
Horizontal displacement speed programmable	10, 15, 20 or 25 cm/sec (3.9, 5.9, 7.9 or 9.8 in/sec) Default : 20 cm/sec (7.9 in/sec)

Battery Specifications

Rechargeable sealed lead acid	(2X) 12VDC, 5Ah
Side rail mounting, position anywhere, charging system	
Battery capacity with load of 91 kg/ 200 lb/ 14.33 st	Up to 120 transfers
Low battery warning indicator	Visual & audible
Charger input – 90-240 Vac, 50-60 Hz, 57-70 VA max.	
Charge indicator	Visual

Strap Specifications

Length	2,3 m (90.6 in)
Automatically stops unit if twisted	

Unit Construction

Frame – steel
Cover – fire retardant plastic

Suggested Slings / Harness / Stretchers

Total support/ Semi-reclined position	Partial support/ Stand position
√ Hammock /Hammonk 6	Band
√ Quick Fit	√ Walking
√ Hygienic	Total transfer
√ Combi	Chest
Bariatric	
Total support/ Lay-down position	Partial support/ Lay-down position
√ Universal stretcher	√ Repositioning
√ Morgue	√ Limb sling



Accessories

a	402.15508	Charger extension - 2 m (78 in)
b1	700.00510	Scale Unit (North America) 363 kg / 800 lb
b2	700.00530	Scale Unit - Class III / 300 kg / 662 lb / 47.24 st (Europe & United Kingdom)
c	700.05720	Scale Unit and adaptor / 350 kg / 770 lb (North America)