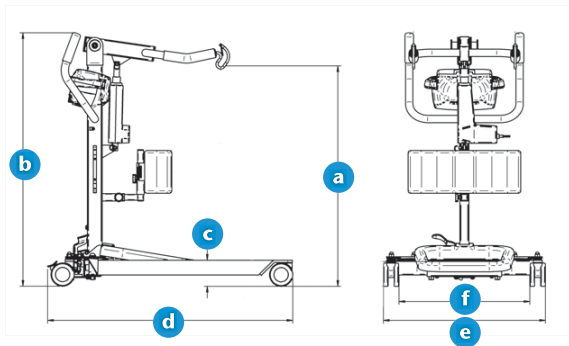
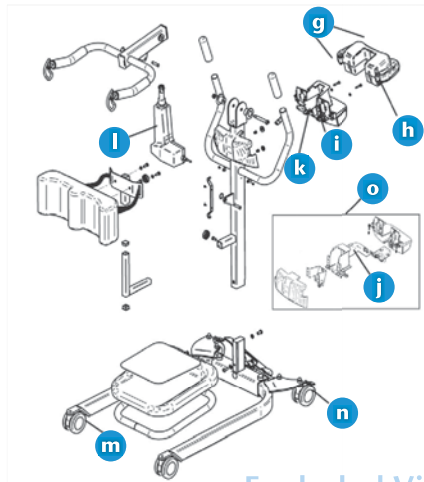


Floor lift Ministand



Dimensions

Description		min		max	
		cm	in	cm	in
a	Hoisting height at connecting points	95.5	37.6	154	60.6
		cm		in	
b	Base height	109		42.9	
c	Total lift height	11		4.25	
d	Base total length	105		41.3	
e	External base width (legs closed)	56.5		22.2	
e	External base width (legs open)	98		38.6	
f	Internal base width (legs closed)	70		27.6	
f	Internal base width (legs open)	110		43.3	



Exploded View

Common spare parts

g	403.10500 (X2)	Battery
h	700.16200	Battery pack
i	492.00045-3	Circuit board - Control box
j	700.16051	Wall charger - North America
j	700.16058	Wall charger - Europe & United Kingdom
k	492.00031-4	Circuit board - Charger
l	700.06610-1	Actuator
m	000.20430	Caster Front 4" (10.16cm)
n	000.20435	Caster back 4" (10.16 cm)
o	492.00045-2	Circuit board - Wall charger