

Portable Ceiling Lift Voyager

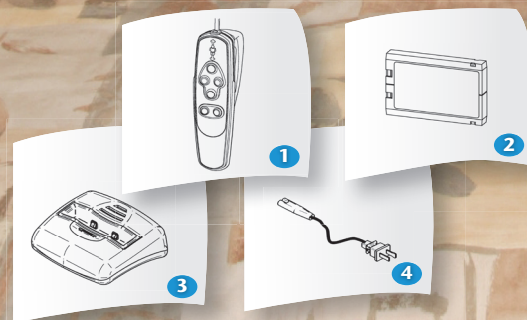
BHM Medical's 12-pound portable track lift, the Voyager, is a David in a world of Goliaths. Not only is it easy to carry and store, but with a lifting capacity of some 440 pounds, it is in a performance class by itself. With its 24-volt battery pack, it can be recharged in less than 2 hours. Now BHM has added the "Quick Releaser", a user-friendly device which swiftly disengages the strap for easy, safe and quick suspension and removal of the lift.

The Voyager portable offers a lifting capacity of : 440 lb (200 kg)



# Product	Description	Market
VOYAGER	Voyager - 2 ways	North America
9800008	Voyager - 2 ways	Europe & United Kingdom

# Part	Description	VOYAGER	9800008
1	700.13600 Hand Control - 2 Way	•	•
2	A8500 Battery Pack	•	•
3	700.13500 Battery Charger	•	•
4	402.00001 Charger Power Cord - North America	•	
4	402.00003 Charger Power Cord - Europe		•
4	402.00005 Charger Power Cord - United Kingdom		•



Suggested Slings / Harness / Stretchers

Total support/ Semi-reclined position	Partial support/ Stand position
✓ Hammock /Hammonk 6	Band
✓ Quick Fit	✓ Walking
✓ Hygienic	Total transfer
✓ Combi	Chest
Bariatric	
Total support/ Lay-down position	Partial support/ Lay-down position
Universal stretcher	Repositioning
Morgue	✓ Limb sling

Features

Weight	5.45 kg / 12 lb / 0.86 st
Lifting capacity	200 kg / 440 lb / 31.49 st
Soft start & stop movement	
Return to charge function on handset	

Safety Features

Emergency lowering device	Manual
Device for emergency stop of the mechanism	Helps to prevent freefalls
Current limiter & emergency stopping device	

Technical Specifications

UL STD 2601-1 / ISO 10535 / CSA C22.2 No. 601.1 - M90 / IEC 60601-1	
Vertical displacement speed	4 cm/sec (1.6 in/sec)

Battery Specifications

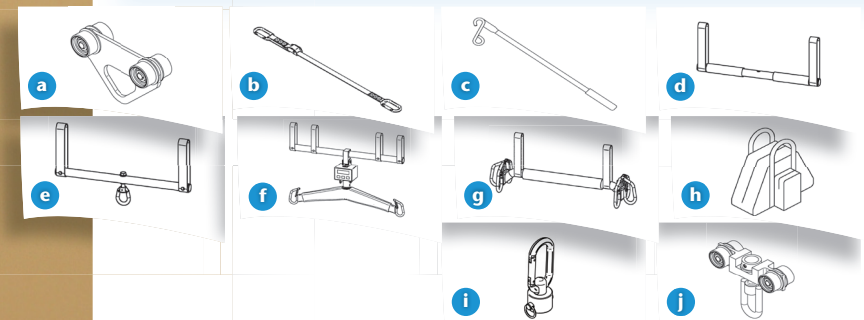
Rechargeable sealed lead acid	24VDC, 2.0Ah
Intelligent & fast charging system	2 to 4 hrs for complete charge
Battery capacity with load of 80 kg / 180 lb / 12.6 st	Up to 30 transfers
Low battery disconnect system	Protect batteries from been drained
Charge input – 90-240 Vac, 50-60 Hz, 27VA max.	
Charge indicator	Visual

Strap Specifications

Length	2,2 m (88 in)
Automatically stops unit if twisted	

Unit Construction

Frame – aluminium	
Cover – fire retardant plastic	



Accessories

a	700.10650	Trolley KWIKtrak
a	A5900	Trolley BHM track
b	A3710	Adjustable extension strap - Blue
c1	700.08310	Reacher 61 cm / 24"
c2	700.08320	Reacher 91 cm / 36"
d	A5720	Trapeze
e	A5710	Trapeze with hook 41 cm (16 in)
f	700.05720	Scale Unit and adaptor / 350 kg (770 lb) (North America)
g	700.05740	Spreader bar
h	002.08150	Portable lift carry bag
i	700.10950	Pivoting adaptor for portable
j	700.10620	Swivel Trolley for portable