

SECURITYGUARD III

OWNERS GUIDE

Congratulations on selecting the SecurityGuard III to protect your family and home.

Your SecurityGuard III with its "speak easy" technology is a revolutionary new radio based state of the art alarm system which has been built to the highest Australian and world quality standards.

Testimony to the sophistication and innovative design of the SecurityGuard III, are the many annunciation features as well as the wireless communication equipment linked to the central monitoring station. Your system is fully transportable so whenever you move, it moves with you!

Please read this Guide carefully as it is designed to give you a comprehensive yet simplistic understanding of how your SecurityGuard III works.



SG III

TESTING YOUR SMALL SENSOR (PIR)



LEAVE ROOM

NO MOVEMENT IN DETECTION AREA



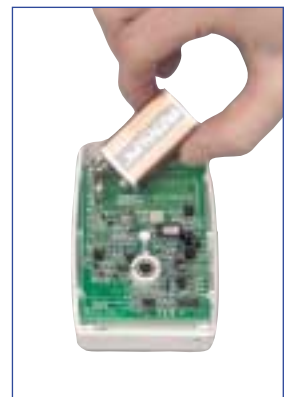
RE-ENTER ROOM

RED LIGHT IN PIR WILL FLASH



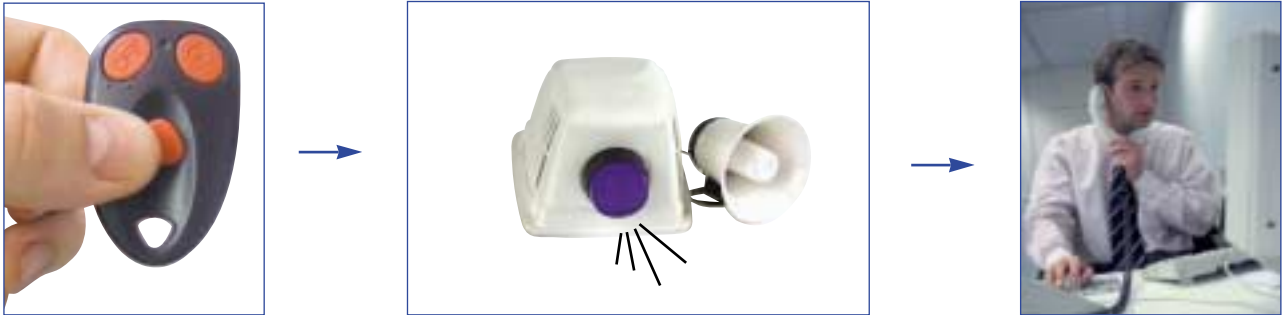
CHANGING YOUR SENSOR (PIR) BATTERY

9 VOLT LITHIUM BATTERY - LASTS APPROX 18 MONTHS



PANIC BUTTON

PRESS AND HOLD THE PANIC BUTTON FOR 2 SECONDS. ALARM WILL SOUND AND RADIO DIALER WILL RING CENTRAL MONITORING STATION



DISPLAYS



TO CLEAR ANY DISPLAY
PRESS THE OFF BUTTON

TO RECALL DISPLAY PRESS THE OFF
BUTTON (UNLESS ALREADY RESET
BY PRESSING ON THEN OFF)

TROUBLESHOOTING		
SYMPTOM	POSSIBLE CAUSE	REMEDY
Red alarm light does not always illuminate on PIR	Constant movement in room	There must be no movement for at least 5 minutes in room. leave room for 5 minutes before re-entering to test
	PIR is faulty	Contact service number
PIR false alarming	Insects crawling on detector	Clear spider webs or spray around the detector with insect surface spray. Do not spray directly on PIR
	Air draughts caused by open windows	Do not leave any windows open near PIR's when alarm is armed
	Pets in detection area	Avoid having pets in areas protected by PIR's
	Sensitivity settings too high	Contact service number
	PIR faulty	Contact service number
Alarm will not turn on	SecurityGuard battery is flat	Plug in battery charger for at least 24 hours
	Radio Key has flat battery	Replace battery in remote or try another remote
Radio key light does not illuminate when button pressed	Battery is low or flat	Change battery and test
	Radio Key is faulty	Contact service number
Red light does not illuminate on reed switch	Battery is low or flat	Replace battery and test
	Reed switch is faulty	Contact service number
Cannot enter Home mode	Incorrect Radio Key operation	Press on twice/three times within 3 seconds
	No home mode detectors programmed	Home mode cannot be entered if there are no Home Detectors programmed
"Warning outside siren tamper"	Your external siren cover has an open tamper or your wiring is faulty	Check outside siren for damage. Call service number

HOME MODE

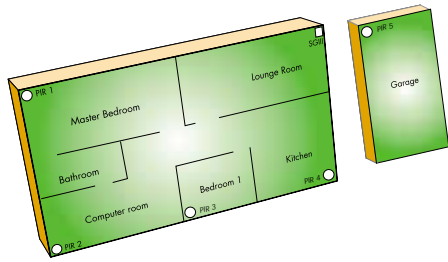


=PROTECTED



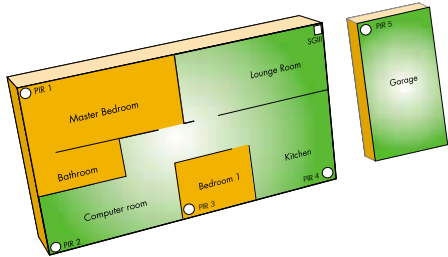
=UN PROTECTED

ARMED



x1 PRESS ON

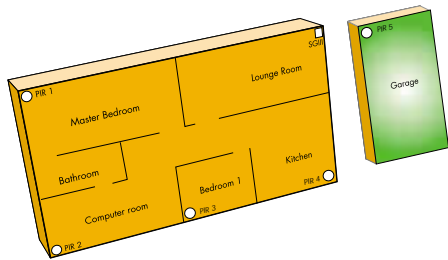
HOME (OPTIONAL)



x2 PRESS ON



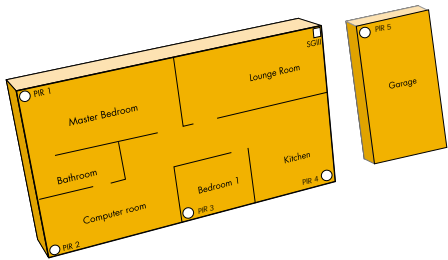
HOME 2 (OPTIONAL)



x3 PRESS ON



DISARMED



x1 PRESS OFF

HOME MODES WILL ONLY WORK IF SENSORS ARE PROGRAMMED TO OPERATE IN "HOME MODES"

EMERGENCY OVERRIDE KEYS

ONLY TO BE USED IF YOUR REMOTE KEY IS LOST OR STOLEN

KEEP THESE KEYS IN A VERY SECURE LOCATION (NOT WITH YOUR HOUSE KEYS)



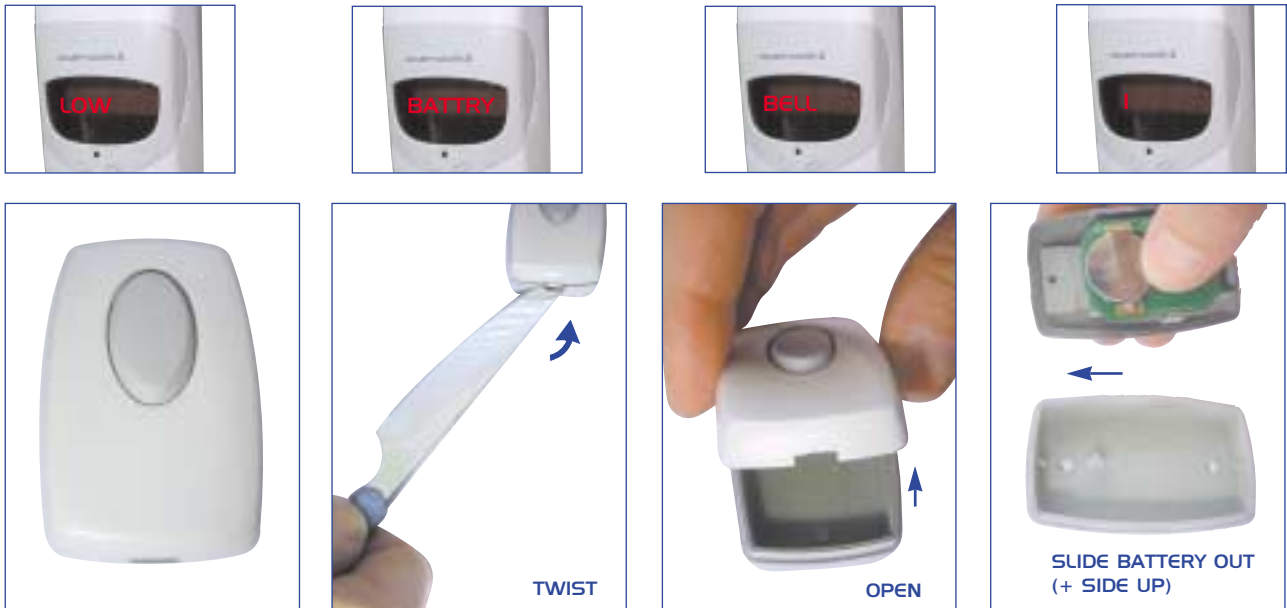
SECURITYGUARD POWER ON



SECURITYGUARD POWER OFF

CHANGING DOOR BELL BATTERY

3 VOLT LITHIUM BATTERY TYPE (CR2032) - LASTS APPROX 24 MONTHS

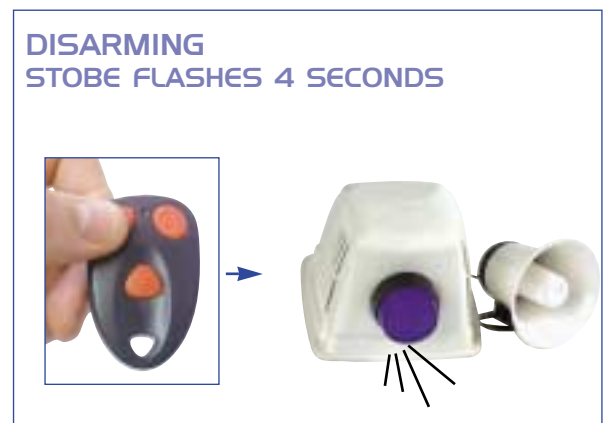


MAIN UNIT FUNCTION BUTTONS

SECURITYGUARD IS WORKING WHEN OK LIGHT FLASHES EVERY 5 SECONDS



SIREN/ BLUE STROBE



IF ALARM ACTIVATES WHILE YOUR AWAY

- SIREN SCREAMS 5 MINUTES
- STROBE FLASHES 1 HOUR
- RADIO DIALER SENDS SIGNAL TO MONITORING STATION

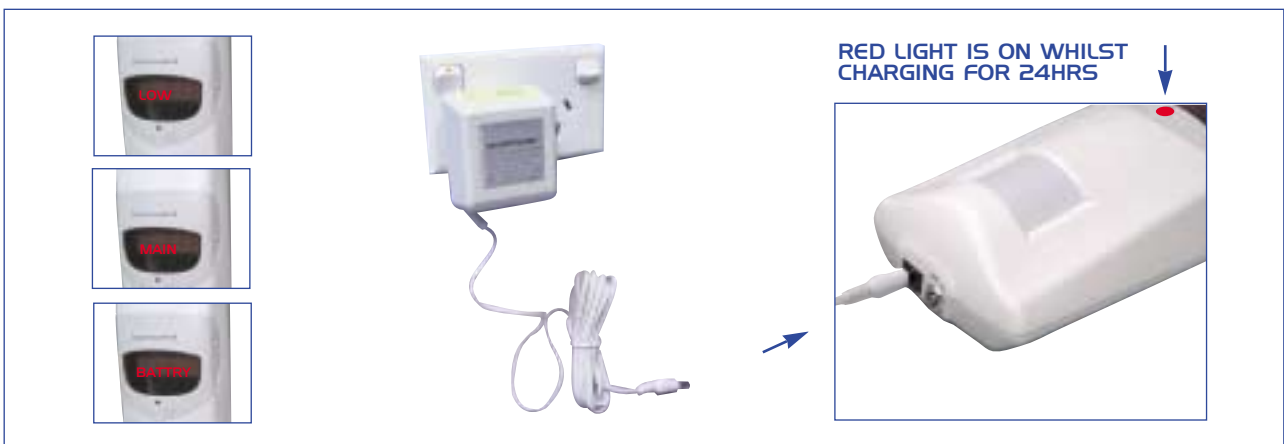
WHEN YOU ARRIVE HOME PRESS OFF BUTTON AND STROBE FLASHES 4 SECONDS AND SIREN BEEPS FOR 5 SECONDS

RADIO DIALER

YOUR RADIO DIALER AUTOMATICALLY SENDS A WEEKLY TEST SIGNAL TO THE CENTRAL MONITORING STATION. IT IS VERY IMPORTANT TO ENSURE THAT YOUR RADIO DIALER IS ALWAYS CONNECTED TO THE PHONE AND POWER LINES. YOUR MAIN UNIT MUST ALWAYS BE CHARGED AND THE EMERGENCY OVERRIDE KEY BE IN THE ON POSITION.



CHARGE MAIN UNIT FOR 24 HOURS



CHANGING REMOTE KEY BATTERY

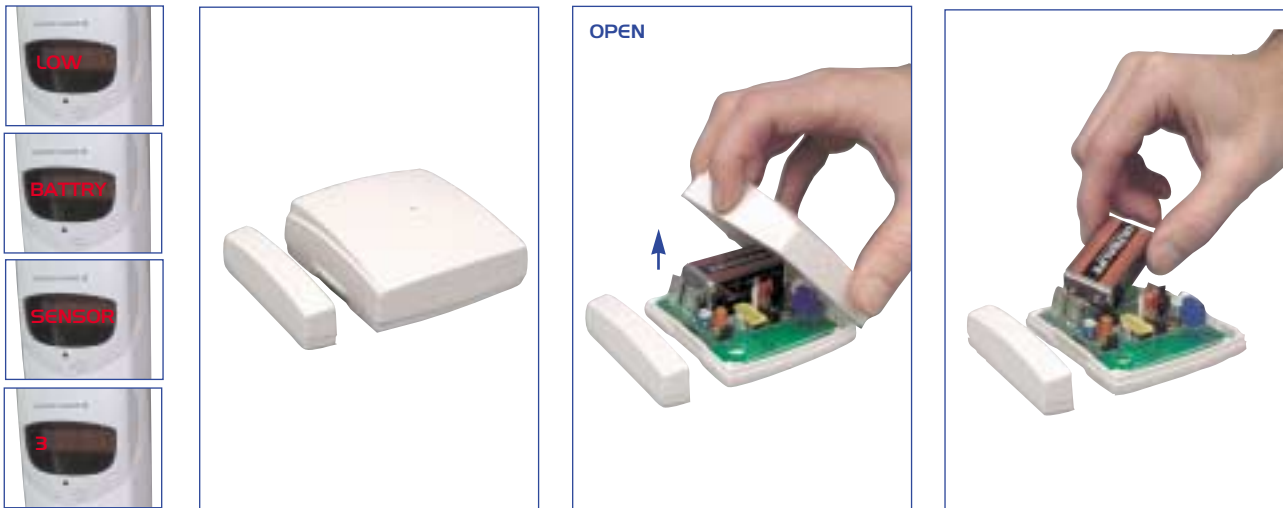
3 VOLT LITHIUM TYPE (CR2016) - LASTS APPROX 24 MONTHS



CHANGING LARGE REED SWITCH BATTERY

9 VOLT LITHIUM - LASTS APPROX 18 MONTHS

WARNING SOUND WILL BE HEARD WHEN OPENING CASE (THIS IS NORMAL)



CHANGING MINI REED SWITCH BATTERY

3 VOLT LITHIUM TYPE (CR2032) - LASTS APPROX 18 MONTHS

WARNING SOUND WILL BE HEARD WHEN OPENING CASE (THIS IS NORMAL)

