



AUGUST, 2019

Living Savior Lutheran Church

AUGUST, 2019

²² **And he said to his disciples,** “Therefore I tell you, do not be anxious about your life, what you will eat, nor about your body, what you will put on. ²³ For life is more than food, and the body more than clothing. ²⁴ Consider the ravens: they neither sow nor reap, they have neither storehouse nor barn, and yet God feeds them. Of how much more value are you than the birds! ²⁵ And which of you by being anxious can add a single hour to his span of life? ²⁶ If then you are not able to do as small a thing as that, why are you anxious about the rest? ²⁷ Consider the lilies, how they grow: they neither toil nor spin, ²⁸ yet I tell you, even Solomon in all his glory was not arrayed like one of these. ²⁹ And do not seek what you are to eat and what you are to drink, nor be worried. ³⁰ For all the nations of the world seek after these things, and your Father knows that you need them. ³¹ Instead, seek his ³² kingdom, and these things will be added to you.

Luke 12:22-34

SUNDAY SCRIPTURES

- August 4 Ecclesiastes 1:2,12-14; 2:18-26
Colossians 3:1-11
Luke 12:13-21
- August 11 Genesis 15:1-6
Hebrews 11:1-16
Luke 12:22-34
- August 18 Jeremiah 23:16-29
Hebrews 11:17-31; 12:1-3
Luke 12:49-53
- August 25 Isaiah 66:18-23
Hebrews 12:4-24
Luke 13:22-30

INSIDE THIS ISSUE

MUSICAL NOTES	2
GENERAL INTEREST	3
LWML NOTES	5
IN OUR PRAYERS	6
BIRTHDAYS / ANNIVERSARIES	7
WEB NOTES	8
JULY CALENDAR	9

MUSICAL NOTES FROM JUDY

By the time you are reading this, our steeple is in place, pointing to the heavens with grace and majesty. As we gaze upon it, we think of those who will see it and prayerfully be reminded of our God in heaven from whom all blessings flow! May it be an inspiration for our church family, and better yet to our entire community including those who are just driving by with a quick glance.

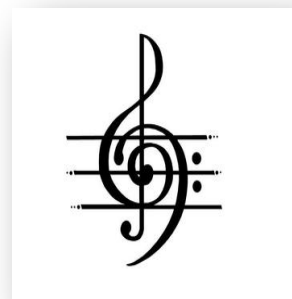
When traveling in rural areas in TX or all over the world, it is always a “catch your breath” moment when you see a white steeple peeking through the trees or on a rolling hillside proclaiming “God is present”. Then you think of all the people who worship there and their joys and their sorrows and the importance of our faith in our lives through Jesus and what God has done touching our lives with His grace and mercies.

As in most construction projects, completing and finishing touches are the most delicate, tedious, detailed, and time consuming. Our hard-working awesome Long Range Planning Committee reports that it is apparent that re-setting our move-in date and dedication date is the most prudent thing to do.

Our dedication worship service will be on SUNDAY, SEPTEMBER 8th, at 4:00 p.m. with a catered meal following. The guest preacher will be Rev. J Brown.

The official Ribbon Cutting will be at the Open House on the following Saturday, September 14 at 10:00 a.m. It will be for the whole

community and will be publicized as such for folks to see the new building and get to know the ministry of Living Savior. Get the word out for this event!



Our **August worship services** are far away from the ‘summer doldrums’ and timely as always. August 4th is “Look Up at Him, Not Down at Things” hmmm this was chosen way before we had the schedule for the steeple installation.!

The 11th is “Treasure His Faithfulness”. “Jesus Knows Your Distress and Joy” on the 18th, and “Family Reunion” on the 25th ... I told you, timely and applicable!

Christian Growth Sunday will be on the 18th, so come and celebrate our Sunday School children and teachers! Bibles will be presented in the Bible Class time. What a delight!

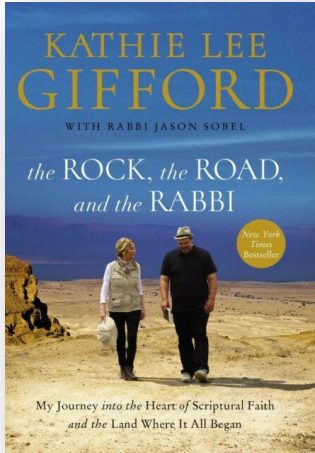
CHOIR: Please note: PRACTICE will resume on Wednesday nights at 7 p.m. on August 21st! If you want a short term commitment or just to check it out, here is an opportunity! All voices soprano, alto, tenor and bass .!

Doesn't the cemetery look better?! Trees trimmed, cemetery is groomed to the glory of God, and now folks can see our church! Blessings all around.

Through Jesus, therefore, let us continually offer to God a sacrifice of praise—the fruit of lips that confess his name. Hebrews 13:15

NEWSLETTER : AUGUST, 2019

Thursday Morning Ladies' Bible Study —The Ladies' Thursday morning Bible study will resume on September 12. Mark your calendar and plan to join us as we begin a new study.



Ladies' Summer Book Study underway

In August we will finish our study of the book *the ROCK, the ROAD and the RABBI*. We still have three places to visit: Galilee: Ministry Grounds, Mount of Olives: The Triumphal Entry and Jerusalem: Crucifixion and Resurrection. We will discuss these places on August 8, 15 and 22.

As you can see each week is a different place. It's not too late to join us. This is a video series so it is not essential that you purchase the book. After we finish our study the book and videos will be available to anyone who wants to borrow them.

For more information contact Annet Riley at asriley@ymail.com or (713) 598-2556.

The Houston Lutheran Choral is seeking new singers to celebrate the birth of our Lord Jesus Christ in music and song.

- Who:** All who love to sing—no auditions are required.
- Where:** Trinity Lutheran Church—Downtown Houston, 800 Houston Ave.
- When:** 6PM, August 18, 2PM to 5PM—two Sunday afternoons each month.



For more information call 832-489-6773 or for a proposed rehearsal schedule, visit their website at www.hlc-tx.org



Special Services to Celebrate the New Sanctuary Opening

All members are invited to a special Dedication Service on Sunday, September 8 at 4:00 PM. A catered meal will follow this service.

The community, at large, is invited to an Open House Celebration on Saturday, September 14, from 10:00 AM to noon.

BUILDING FUND MAINTAINS A MILESTONE

As of July 7 your Building Fund **donations continued to exceeded your pledges.**
Total donations to the Building fund were **\$584,449.94** and
pledges were **\$513,725.00**

PRAISE THE LORD FOR THIS SIGNIFICANT ACCOMPLISHMENT IN THE LIFE OF LIVING SAVIOR

Please continue to donate to the Building Fund, as each dollar donated between now and the end of July will reduce the amount of money we need to borrow from the Texas District Church Extension Fund.



LWML MITES OFFERINGS



LWML Mites - Based on the Biblical account of the widow's mite (Luke 21:1–4), the Mite Box is intended for regular contributions of "mites" — offerings above and beyond the support given to congregations and the LCMS. Mite Box contributions amount to millions of dollars that fund district and national mission grants and implement the LWML program.

It is summer, but we are still collecting mites. Mite Sunday is August 4. Please bring your mites and leave them by the big Mite Box. If you don't have a Mite Box, you can still leave a donation in the big Mite Box. Feel free to take a Mite Box with you when you leave. Every little bit helps. Thanks for your support of LWML missions through your mites.

Submitted by Annet Riley

IN OUR PRAYERS

HEALING/SURGERY/HOSPITALIZATION

Steve Cirtaus

Cardiac testing for Afib

Dolly Iselt

Dizziness and pacemaker issues

Earl McCaleb

Difficulty with vision in left eye

Rick Schoppe

Healing after skin cancer removal and testing

All Schuller

Skin cancer and breathing difficulties

Kenneth Stephenson (Sylvia Bailes' brother)

Jaw and throat cancer

Janice Stille (Lee's daughter)

Dealing with vision issues from a yet undiagnosed cause

Jim Wasmund

Internal bleeding



COMFORT FOR FAMILY/FRIENDS OF THE DEPARTED

Jerry Schofield (Darlene Brown's brother)

Sandy Cordes (Lorna Lipsey's niece)

CANCER/LONG-TERM ILLNESS

Jan Baker (Joice Fangmann's sister)

Stomach cancer

Gloria Boddeker (Anita Lee's mom)

Long-term health care

Lisa Dinning

Testing for severe recurring headaches

Elizabeth Dunlap (LSLC neighbor)

Blood disorder

Ann Griffin (Charlotte Wilson's friend)

Skilled nursing for cancer care

Barbara Hammond (Vahrenkamps' Aunt)

Bone cancer & chemo treatments

Mary Hayslip (Doyle Hayslip's mother)

Cancer and ongoing chemo treatments

CANCER / LONG-TERM ILLNESS

Everett Itschner (Shoppes' great-nephew)

Dealing with RSV and heart irregularity

Ginny Kapeel (Barbara Handley's extended family)

Cancer treatments

Joanne Musule (Stefflers' extended family)

Breast cancer

Donald Oakley (Bruce Shutt's brother-in-law)

Multiple myeloma

Bart Powell

Treatments for cancer & pain management

Warren Richards

Treatments for muscle spasms from stroke

Butch Robertson (Steffler's friend)

Treatments for cancer

Weldon Shutt

Long-term care facility due to declining health

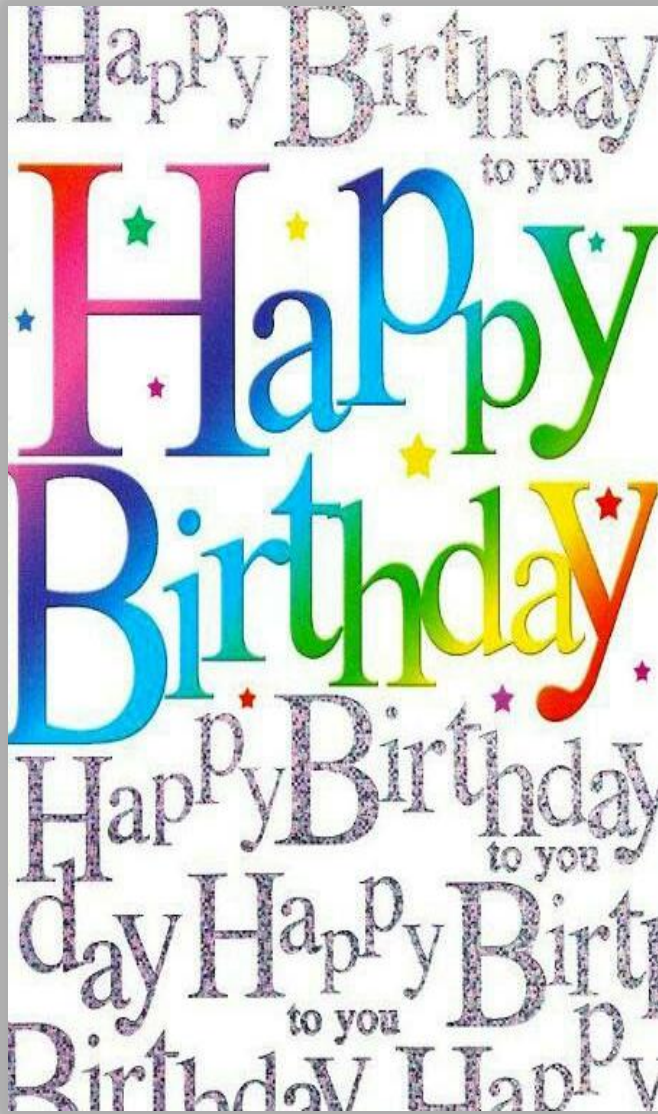
Patty Thibodeaux (Micki Lineberger's sister)

Ovarian cancer

Haydon Wilson (Charlotte Wilson's great-grandson)

Treatments for a rare blood disorder

NEWSLETTER : AUGUST, 2019



Brian Dawson	8/1
Jamie Hollis	8/1
Kathlyn Cirtaus	8/2
Edward Langlois	8/4
Rebekah Rios	8/4
Layne Bautz	8/7
Claudia Downing	8/7
Romain Godfrey	8/8
Judy Kutach	8/8
Maya Stille	8/12
Chris Cheatham	8/13
Susan Barnes	8/14
Clay Hegar	8/14
Michelle Lowery	8/15
Tara Wunderlich	8/16
Carson Doty	8/17
Paul Downing	8/18
Michelle Lineberger	8/18
Suzanne Brooks	8/19
Cody Mold	8/19
Lisa Schoppa	8/19
James Hadley	8/20
James Lipsey	8/21
Kelly Barnes	8/24
Jerry Ferguson	8/24
Cierra Larkin	8/24
Nanette Dodd	8/25
Velma Powell	8/25
Jayden Wiese	8/25
Doug Krenz	8/28
Albert Schuller Jr.	8/28
Sarah Wieghat	8/28
Doyle Hayslip	8/31
Scott Middleton	8/31

John & Shirley Burg	8/6
Mark & Kathy Lamprecht	8/7
Doyle & Sharon Hayslip	8/9
Ronald & Priscilla McEachern	8/10
Peter & Suzann Hames	8/14
Stephen & Jill Simonsen	8/15
Thomas & Nancy Ayres	8/22
Jerry & Patricia Ferguson	8/22
Jesse & Bonnie McCaleb	8/22
Tim & Rosa Yolich	8/22
John & Wanda Puffer	8/26
Warren & Julia Richards	8/31



LIVING SAVIOR LUTHERAN CHURCH

309 Pond Street
 Montgomery, Texas 77356

Phone: 936-597-8013
 Email: office@livingsaviortexas.org



ONLINE GIVING IS NOW AVAILABLE AT LIVING SAVIOR

Introduction

Living Savior has partnered with a company called VANCO to provide optional online giving. VANCO is the preferred vendor of financial services for Concordia Technology Solutions and is widely used both in business and with religious institutions. Concordia Technology provides many of the software products we currently use at Living Savior and has a solid reputation as a software vendor for churches like ours.

VANCO was selected both for its competitive cost and fee structure and because of its compatibility with our church database, Shepherd’s Staff. Shepherd’s Staff is the CTS product we use to manage both financial and non-financial data.

Offerings Option

Online offerings can now be made by selecting the **Offerings** menu option, then clicking on the **Give Now** button.

Security

All of the financial data that you provide for the online giving screens is

secured within VANCO. None of this data is saved on Living Savior’s website. The LSLC website “knows” nothing about your personal financial data.

Type of Transaction	ACH Fee	Transaction Fee
eCheck (<i>Transfer from Checking or Savings Account</i>)	\$0.45	1%
Debit or Credit Card		
<i>Visa/Master Card/Discover</i>	\$0.45	2.75%
<i>Amex Card</i>	\$0.45	3.50%

Fees

As with other electronic payment options, there is a fee associated with online giving to a church. VANCO was selected, in part, because of competitive fee structure. These fees are documented above.

Help

For help in using the **Give Now** screen, click on this link :

https://00.b5z.net/i/u/10159209/f/giveplus_online_embed_how_it_works.pdf

To learn how to use the **Mobile Phone App**, click on this link :

<https://player.vimeo.com/video/262292774?title=0&byline=0&portrait=0>

LIVING SAVIOR LUTHERAN CHURCH

AUGUST, 2019

Sun.	Mon.	Tue.	Wed.	Thu.	Fri.	Sat.
				1	2	3
				Camp Lone Star	Camp Lone Star - Pastor's Day Off -	10:00 Music Practice
4	5	6	7	8	9	10
8:00 Early Service 9:15 Fellowship 9:30 SS & Bible class 10:45 Late Service		1:00 Worship Committee Meeting 5:00 Girl Scout Troop 10822 Meeting		10:00 Ladies Summer Book Study	- Pastor's Day Off -	10:00 Music Practice
11	12	13	14	15	16	17
8:00 Early Service 9:15 Fellowship 9:30 SS & Bible class 10:45 Late Service	5:00 Women's Bible Study at El Bosque		7:00 Choir Practice for Dedicaton Sunday	10:00 Ladies Summer Book Study	- Pastor's Day Off -	8:00 Men's Bkfst & Bible Study 10:00 Music Practice
18	19	20	21	22	23	24
8:00 Early Service 9:15 Fellowship 9:30 SS & Bible class 10:45 Late Service		5:00 Girl Scout Troop 10822 Meeting		10:00 Ladies Summer Book Study	- Pastor's Day Off -	10:00 Music Practice
25	26	27	28	29	30	31
8:00 Early Service 9:15 Fellowship 9:30 SS & Bible class 10:45 Late Service 12:00 Parent and Youth Lunch Meeting					- Pastor's Day Off -	10:00 Music Practice