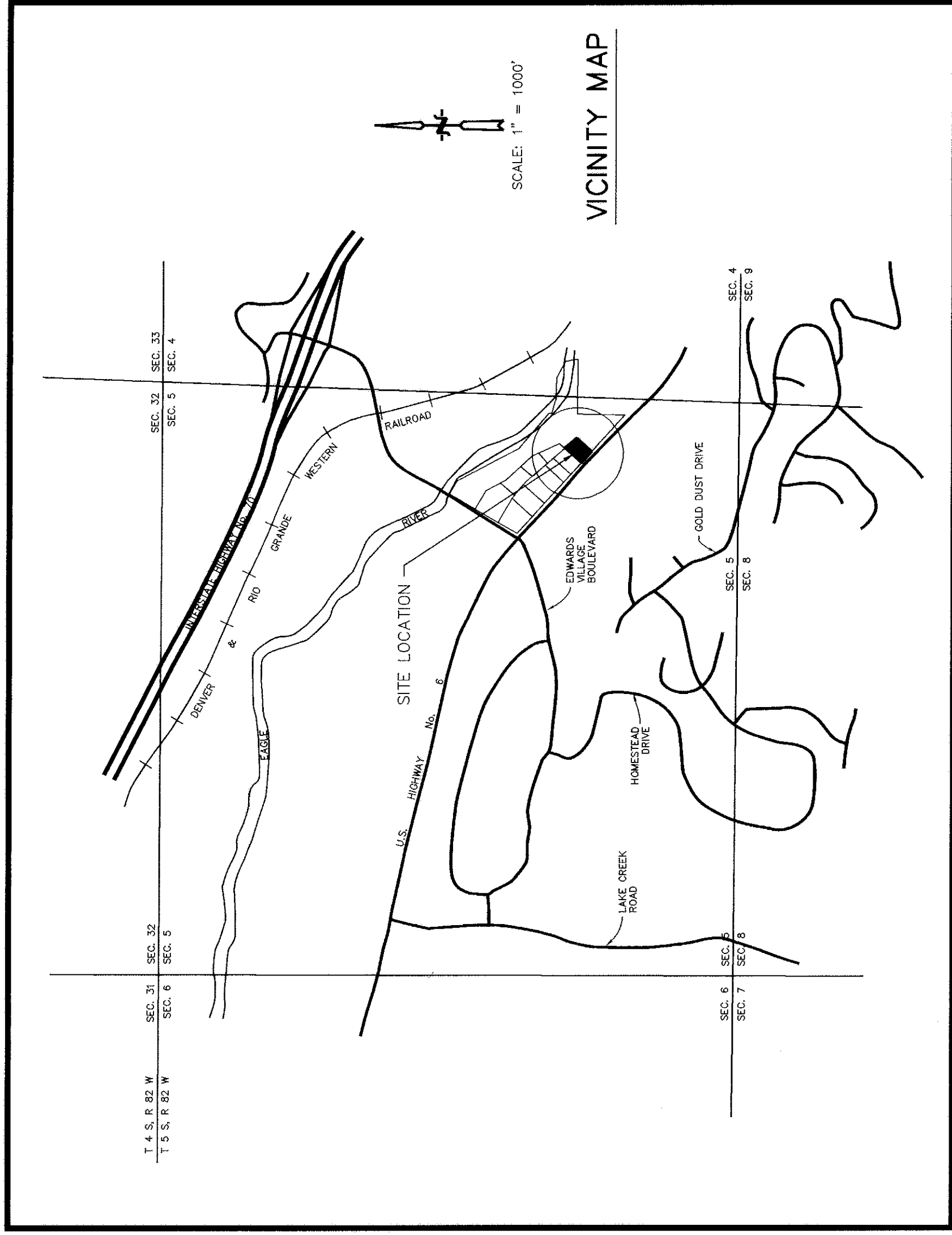


CONDOMINIUM MAP
RIVERWALK AMBER BUILDING CONDOMINIUMS
A RESUBDIVISION OF LOT 9, RIVERWALK AT EDWARDS, PHASE 7
COUNTY OF EAGLE, STATE OF COLORADO



TITLE CERTIFICATE

FIRST AMERICAN HERITAGE TITLE CO. DOES HEREBY CERTIFY THAT IT HAS EXAMINED THE TITLE TO ALL LANDS SHOWN UPON THIS CONDOMINIUM MAP AND THAT TITLE TO SUCH LANDS IS FREE AND CLEAR OF ALL LIENS AND ENCUMBRANCES...

BY: [Signature] Vice President

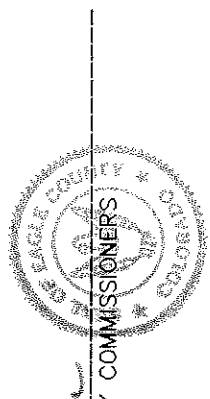
\* Statement in connection with said Deed of Trust recorded 12-30-99 at Rev. # 719271

COUNTY COMMISSIONERS' CERTIFICATE

BASED UPON THE REVIEW AND RECOMMENDATION OF THE EAGLE COUNTY DIRECTOR OF COMMUNITY DEVELOPMENT, THE BOARD OF COUNTY COMMISSIONERS OF EAGLE COUNTY...

CHAIRMAN, BOARD OF COUNTY COMMISSIONERS
EAGLE COUNTY, COLORADO

WITNESS MY HAND AND SEAL OF THE COUNTY OF EAGLE



ATTEST: [Signature] Clerk to the Board of County Commissioners

COMMUNITY DEVELOPMENT CERTIFICATE

PURSUANT TO THE EAGLE COUNTY LAND USE REGULATIONS, THE DIRECTOR OF EAGLE COUNTY COMMUNITY DEVELOPMENT HEREBY APPROVES THIS CONDOMINIUM MAP...

PLAN HOLD CORPORATION • RIVERWALK AMBER BUILDING CONDOMINIUMS

DRAWING NUMBER

PLAN HOLD CORPORATION • RIVERWALK AMBER BUILDING CONDOMINIUMS

DRAWING NUMBER

PLAN HOLD CORPORATION • RIVERWALK AMBER BUILDING CONDOMINIUMS

DRAWING NUMBER

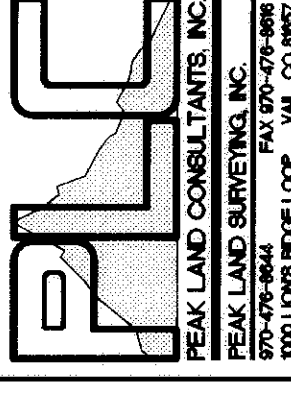
PLAN HOLD CORPORATION • RIVERWALK AMBER BUILDING CONDOMINIUMS

DRAWING NUMBER

Table with columns: UNIT #, ADDRESS, USE. Lists units R-100 through R-322 and their corresponding addresses and uses.

GENERAL NOTES

- 1 DATE OF SURVEY: SEPTEMBER, 2000.
2 BASIS OF BEARING: 50725133'W BETWEEN THE EAST 1/4 CORNER, SECTION 5, TOWNSHIP 5 SOUTH, RANGE 82 WEST OF THE SIXTH P.M. ...

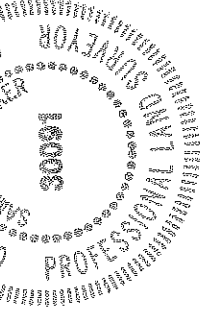


SURVEYOR'S CERTIFICATE

SAMUEL H. ECKER, DO HEREBY CERTIFY THAT I AM A REGISTERED LAND SURVEYOR LICENSED UNDER THE PROFESSIONAL LAND SURVEYING ACT OF THE STATE OF COLORADO...

IN WITNESS WHEREOF, I HAVE SET MY HAND AND SEAL THIS 30th DAY OF SEPTEMBER, A.D., 2000.

SAMUEL H. ECKER P.L.S. NO. 30091



CERTIFICATE OF TAXES PAID

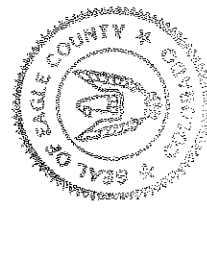
I, THE UNDERSIGNED, DO HEREBY CERTIFY THAT THE ENTIRE AMOUNT OF TAXES AND ASSESSMENTS DUE UPON ALL PARCELS OF REAL ESTATE DESCRIBED ON THIS CONDOMINIUM MAP ARE PAID IN FULL.

DATED THIS 31 DAY OF October, A.D., 2000.

[Signature] Treasurer of Eagle County

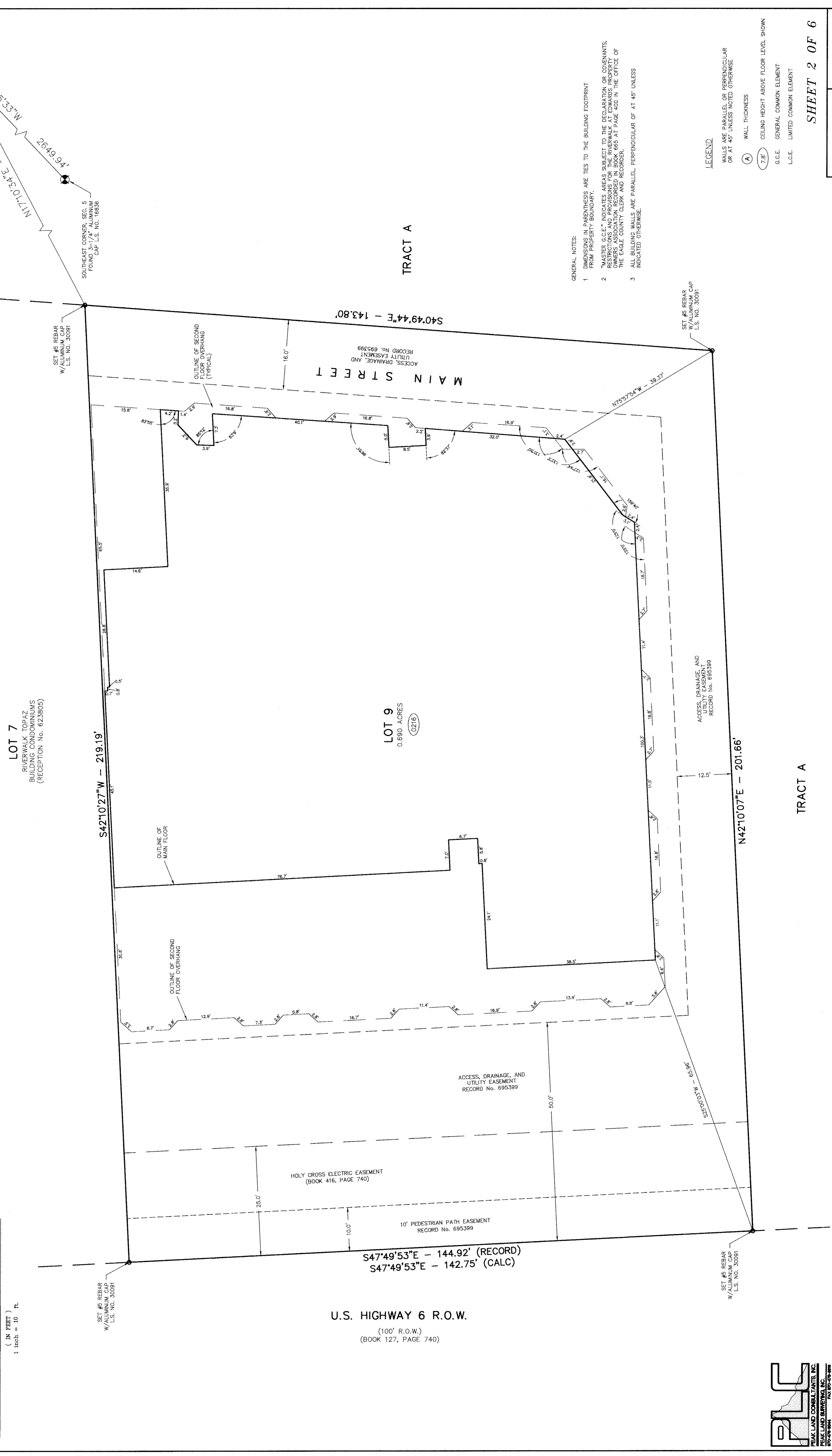
CLERK AND RECORDERS CERTIFICATE \$600
THIS CONDOMINIUM MAP WAS FILED FOR RECORD IN THE OFFICE OF THE CLERK AND RECORDER AT 2:21 P.M. ON THIS 31st DAY OF OCTOBER, 2000 AND IS DULY RECORDED AT RECEPTION NO. 987543.

[Signature] Clerk and Recorder



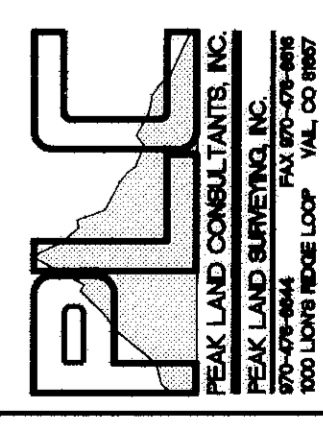
EAGLE COUNTY FILE No. SMB-00258

CONDOMINIUM MAP  
**RIVERWALK AMBER BUILDING CONDOMINIUMS**  
 A RESUBDIVISION OF LOT 9, RIVERWALK AT EDWARDS, PHASE 7  
 COUNTY OF EAGLE, STATE OF COLORADO



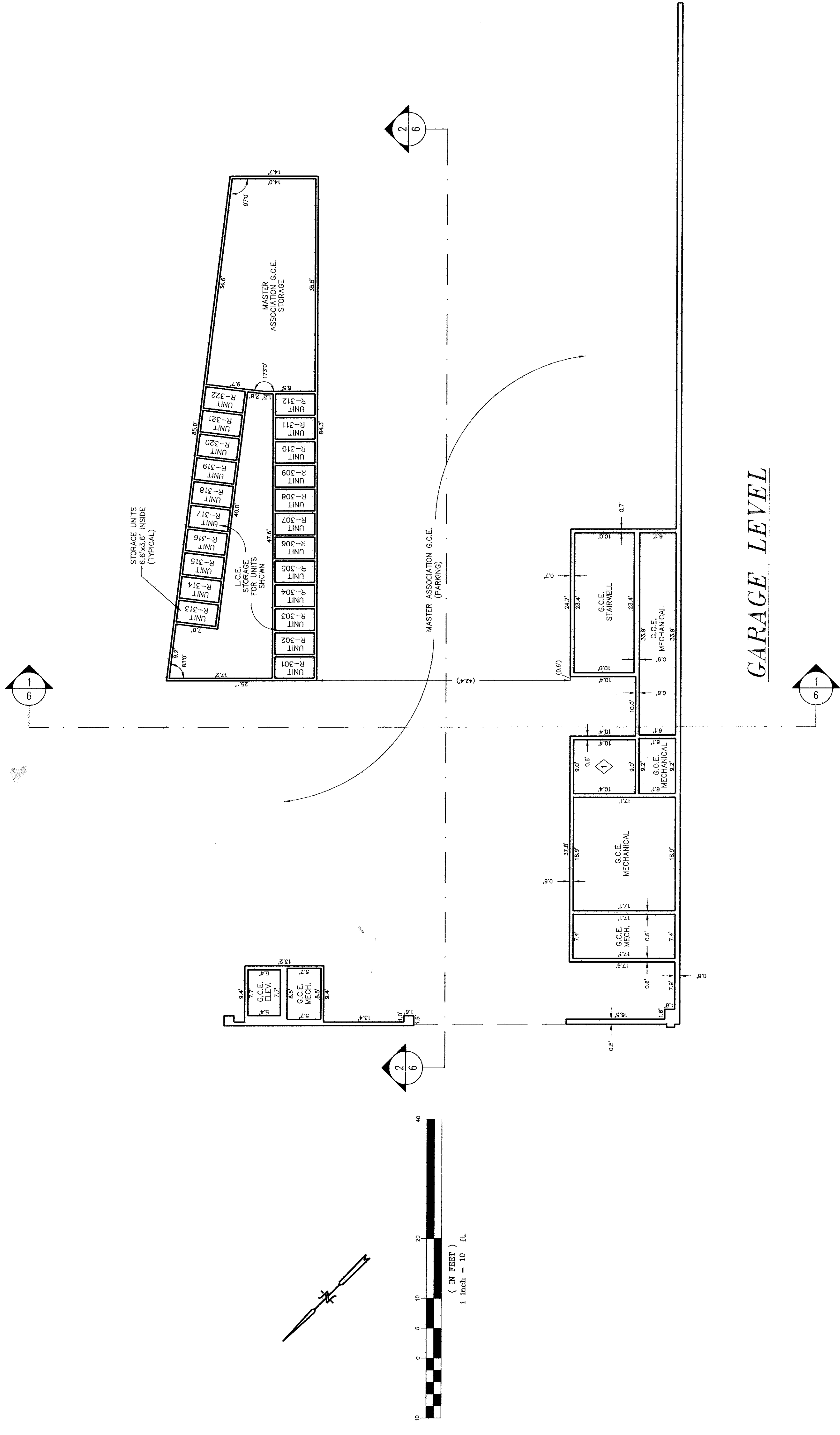
- GENERAL NOTES:
- 1 DIMENSIONS IN PARENTHESES ARE TIES TO THE BUILDING FOOTPRINT FROM PROPERTY BOUNDARY.
  - 2 \*MASTER G.C.E.\* INDICATES AREAS SUBJECT TO THE DECLARATION OR COVENANTS, RESTRICTIONS AND PROVISIONS FOR THE RIVERWALK AT EDWARDS PROPERTY AND ARE SHOWN IN PINK AND RECORDED WITH THIS MAP IN THE OFFICE OF THE EAGLE COUNTY CLERK AND RECORDER.
  - 3 ALL BUILDING WALLS ARE PARALLEL, PERPENDICULAR OF AT 45° UNLESS INDICATED OTHERWISE.

- LEGEND:
- WALLS ARE PARALLEL OR PERPENDICULAR OR AT 45° UNLESS NOTED OTHERWISE
  - (A) WALL THICKNESS
  - (7.8') CEILING HEIGHT ABOVE FLOOR LEVEL SHOWN
  - G.C.E. GENERAL COMMON ELEMENT
  - L.C.E. LIMITED COMMON ELEMENT

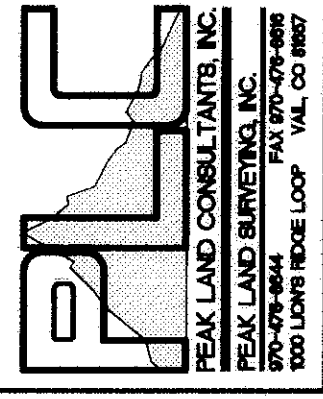


CONDOMINIUM MAP

**RIVERWALK AMBER BUILDING CONDOMINIUMS**  
 A RESUBDIVISION OF LOT 9, RIVERWALK AT EDWARDS, PHASE 7  
 COUNTY OF EAGLE, STATE OF COLORADO



- LEGEND**
- WALLS ARE PARALLEL OR PERPENDICULAR OR AT 45° UNLESS NOTED OTHERWISE
  - ◇ L.C.E. ELEVATOR UNITS C-100, C-105, C-201, C-202, C-300
  - ② L.C.E. RESTROOM, UNIT C-100, C-105
  - ⑦.8 CEILING HEIGHT ABOVE FLOOR LEVEL SHOWN
  - G.C.E. GENERAL COMMON ELEMENT
  - L.C.E. LIMITED COMMON ELEMENT



DRAWING NUMBER

DRAWING NUMBER

DRAWING NUMBER

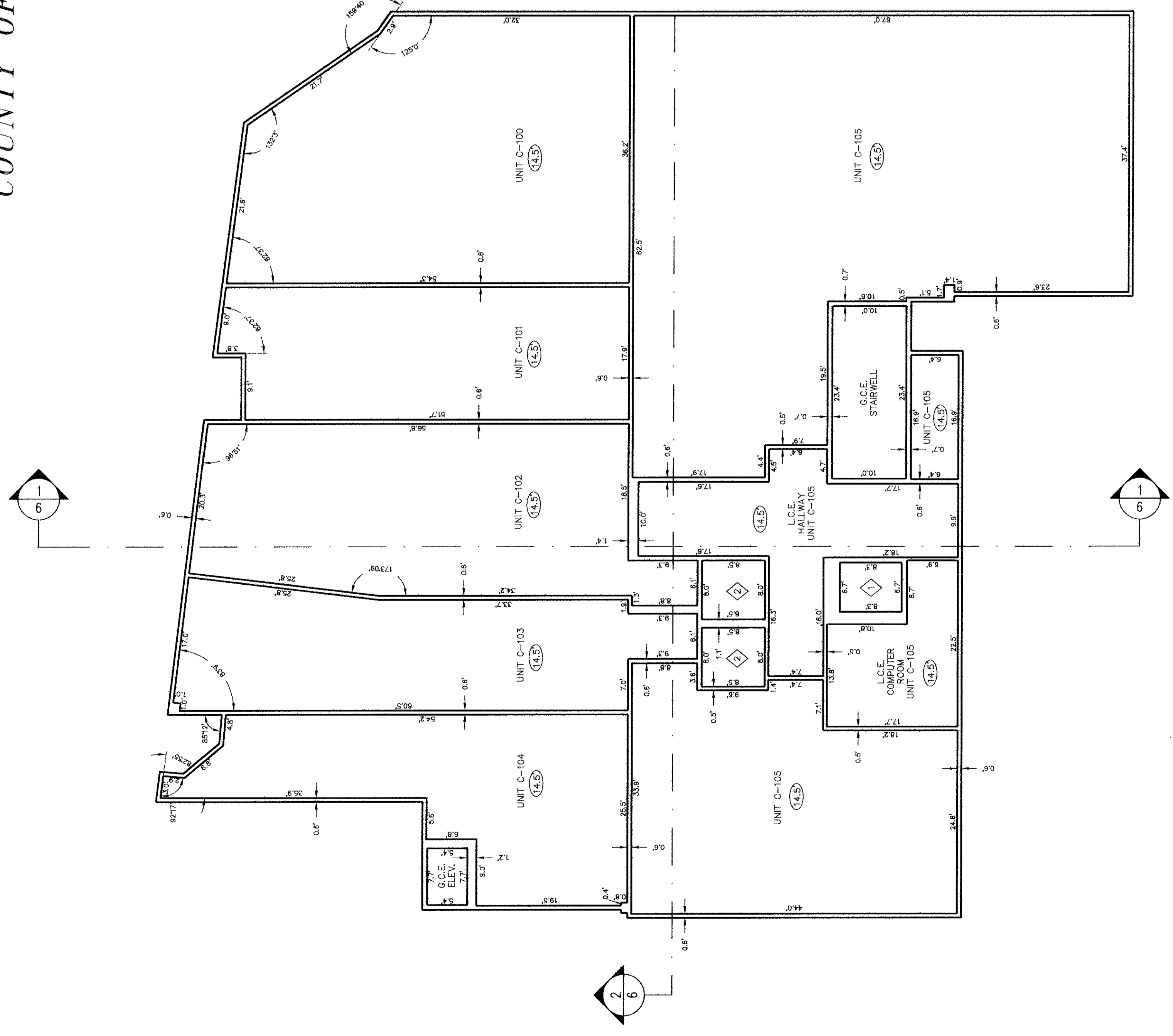
149863  
 Page 3 of 6  
 DRAWING NUMBER  
 Riverwalk Amber  
 Building Condos

CONDOMINIUM MAP

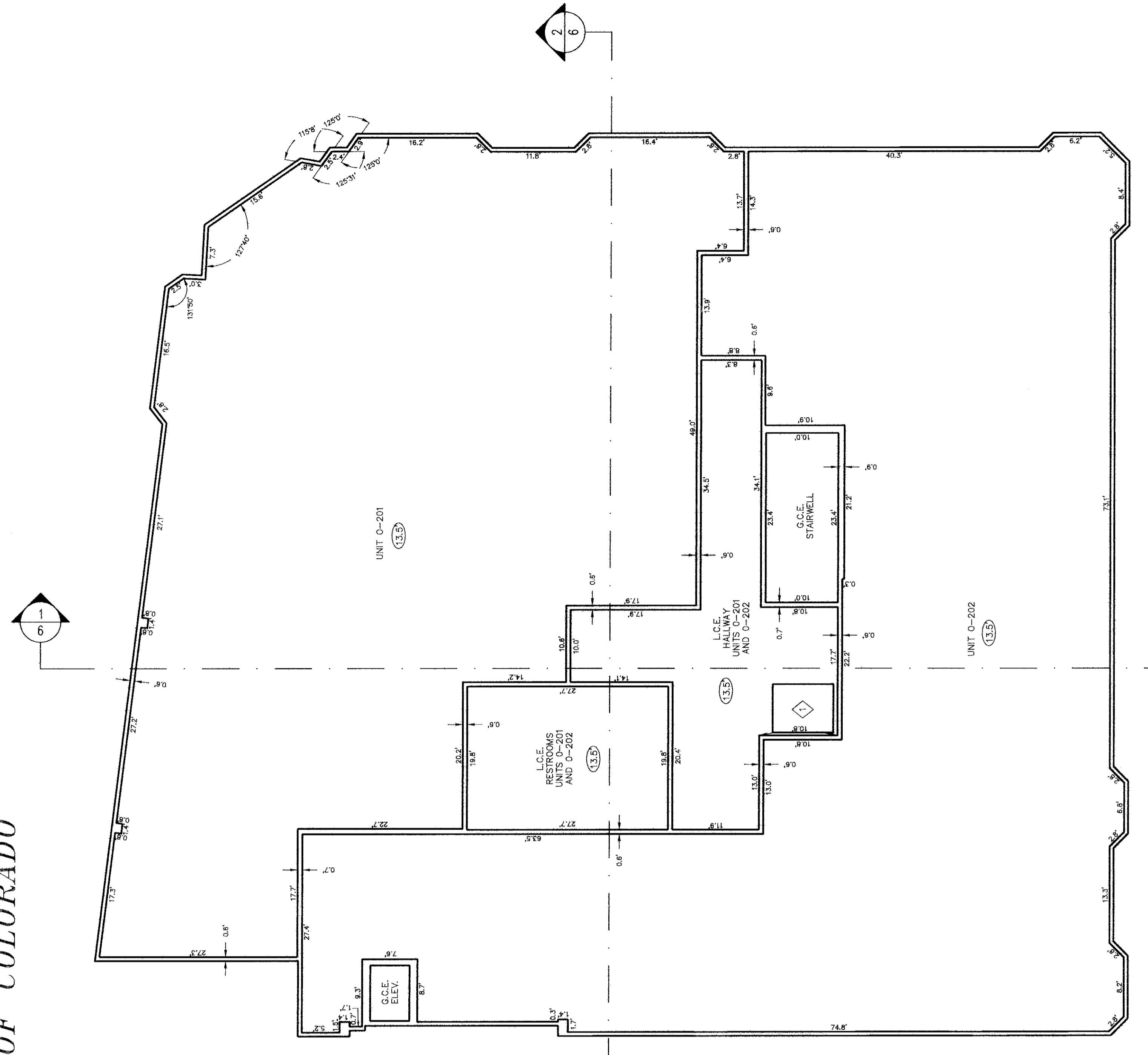
RIVERWALK AMBER BUILDING CONDOMINIUMS

A RESUBDIVISION OF LOT 9, RIVERWALK AT EDWARDS, PHASE 7

COUNTY OF EAGLE, STATE OF COLORADO

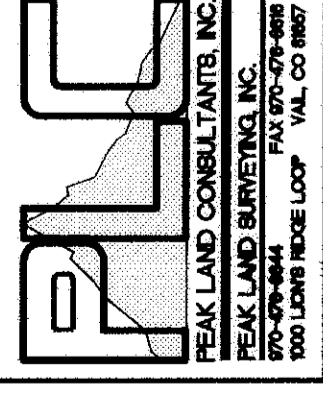


FIRST FLOOR LEVEL

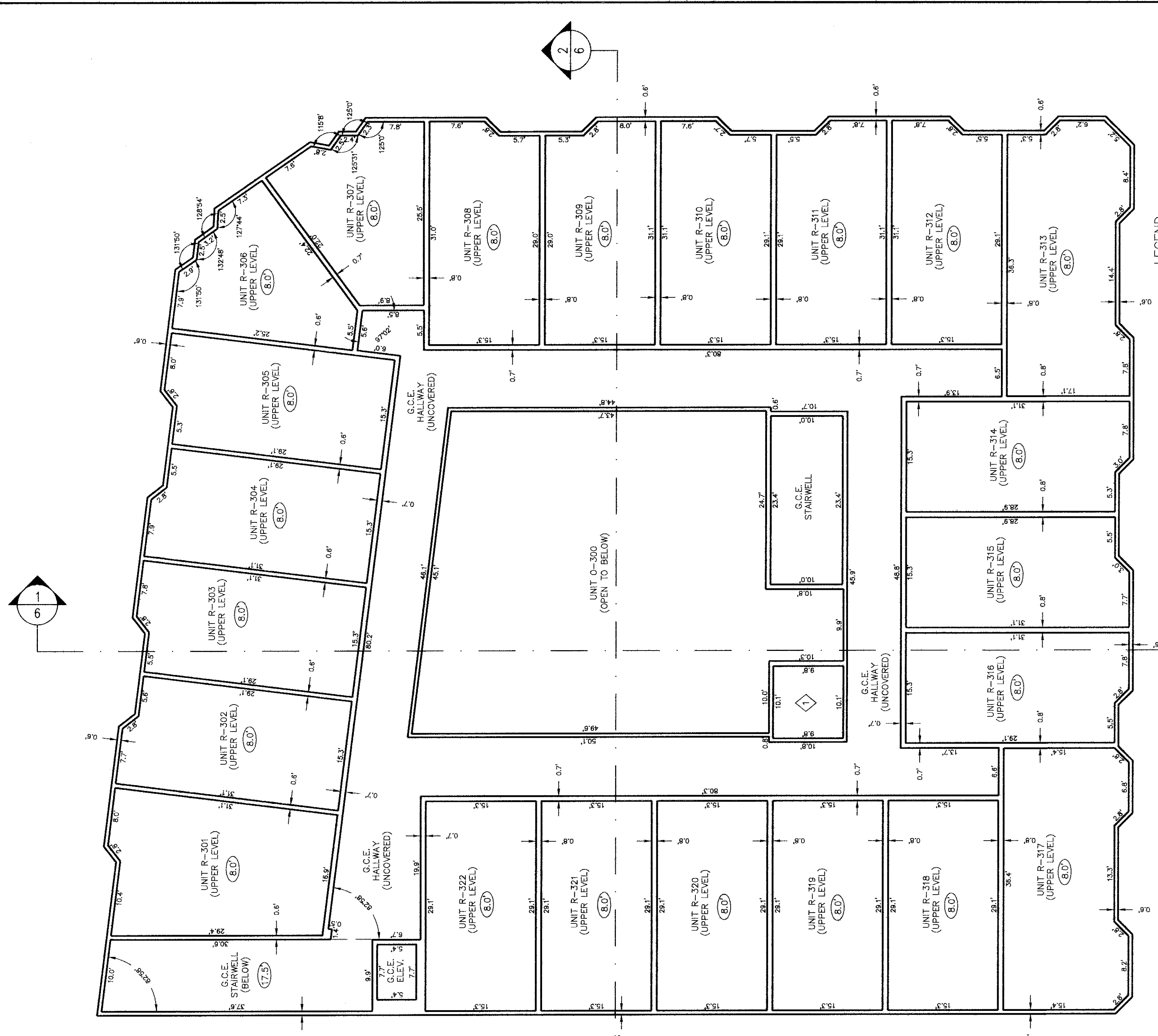


SECOND FLOOR LEVEL

- LEGEND
- WALLS ARE PARALLEL OR PERPENDICULAR OR AT 45° UNLESS NOTED OTHERWISE
  - 1 L.C.E. ELEVATOR UNITS C-100, C-105, O-201, O-202, O-300
  - 2 L.C.E. RESTROOM UNIT C-100, C-105
  - 3 CEILING HEIGHT ABOVE FLOOR LEVEL SHOWN
  - G.C.E. GENERAL COMMON ELEMENT
  - L.C.E. LIMITED COMMON ELEMENT

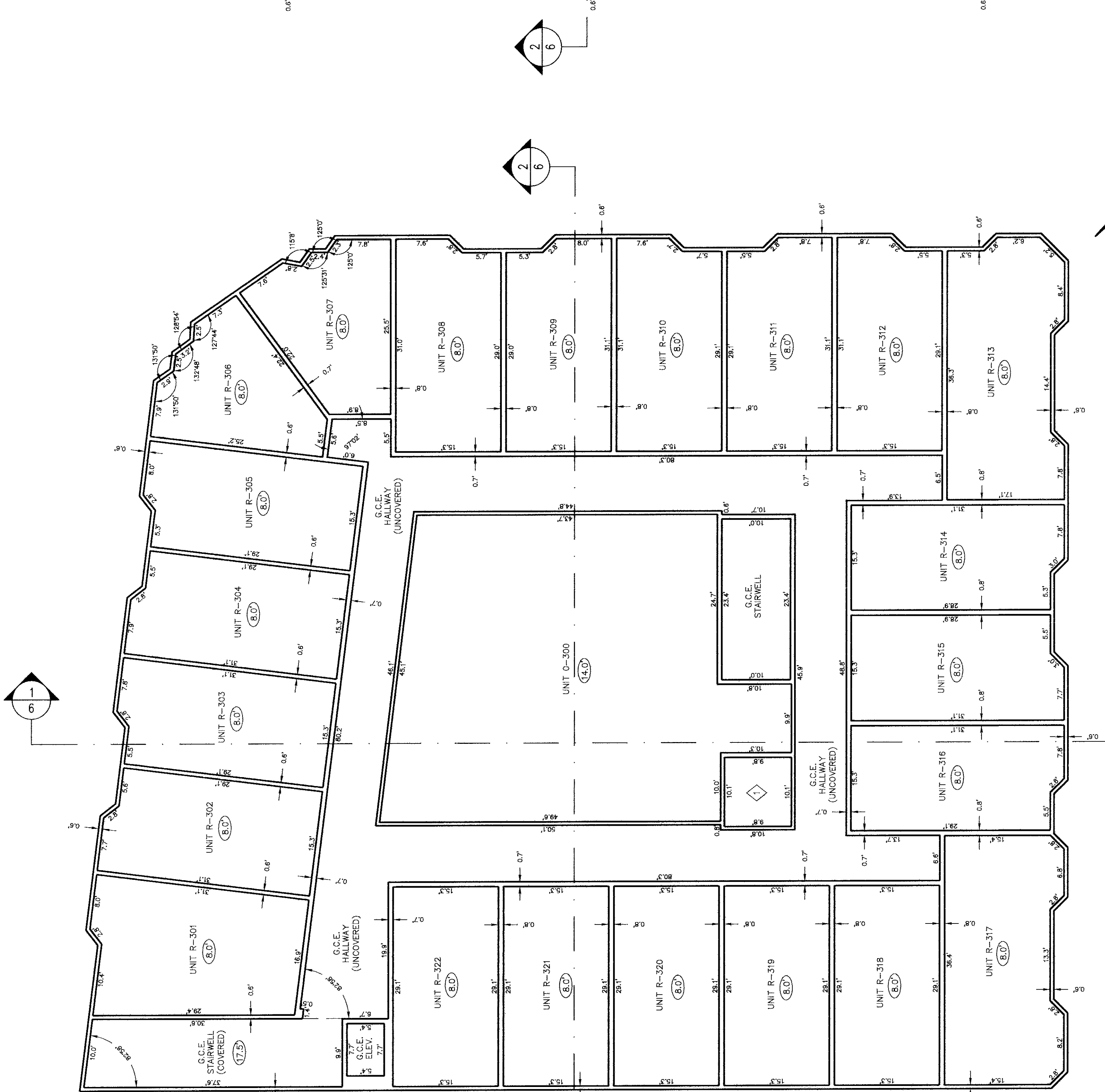


CONDOMINIUM MAP  
**RIVERWALK AMBER BUILDING CONDOMINIUMS**  
 A RESUBDIVISION OF LOT 9, RIVERWALK AT EDWARDS, PHASE 7  
 COUNTY OF EAGLE, STATE OF COLORADO

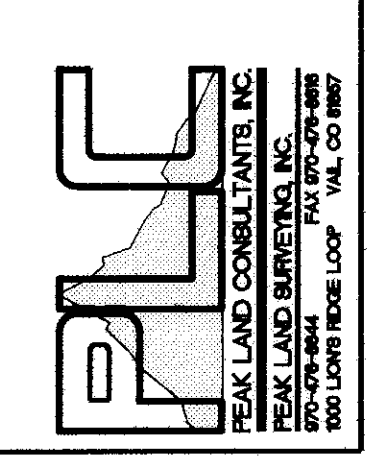


**LEGEND**  
 WALLS ARE PARALLEL OR PERPENDICULAR  
 OR AT 45° UNLESS NOTED OTHERWISE  
 ① L.C.E. ELEVATOR, UNITS C-100,  
 C-105, C-201, C-202, C-300  
 ② L.C.E. RESTROOM, UNIT C-100, C-105  
 ③ CEILING HEIGHT ABOVE FLOOR LEVEL SHOWN  
 G.C.E. GENERAL COMMON ELEMENT  
 L.C.E. LIMITED COMMON ELEMENT

**THIRD FLOOR LEVEL**

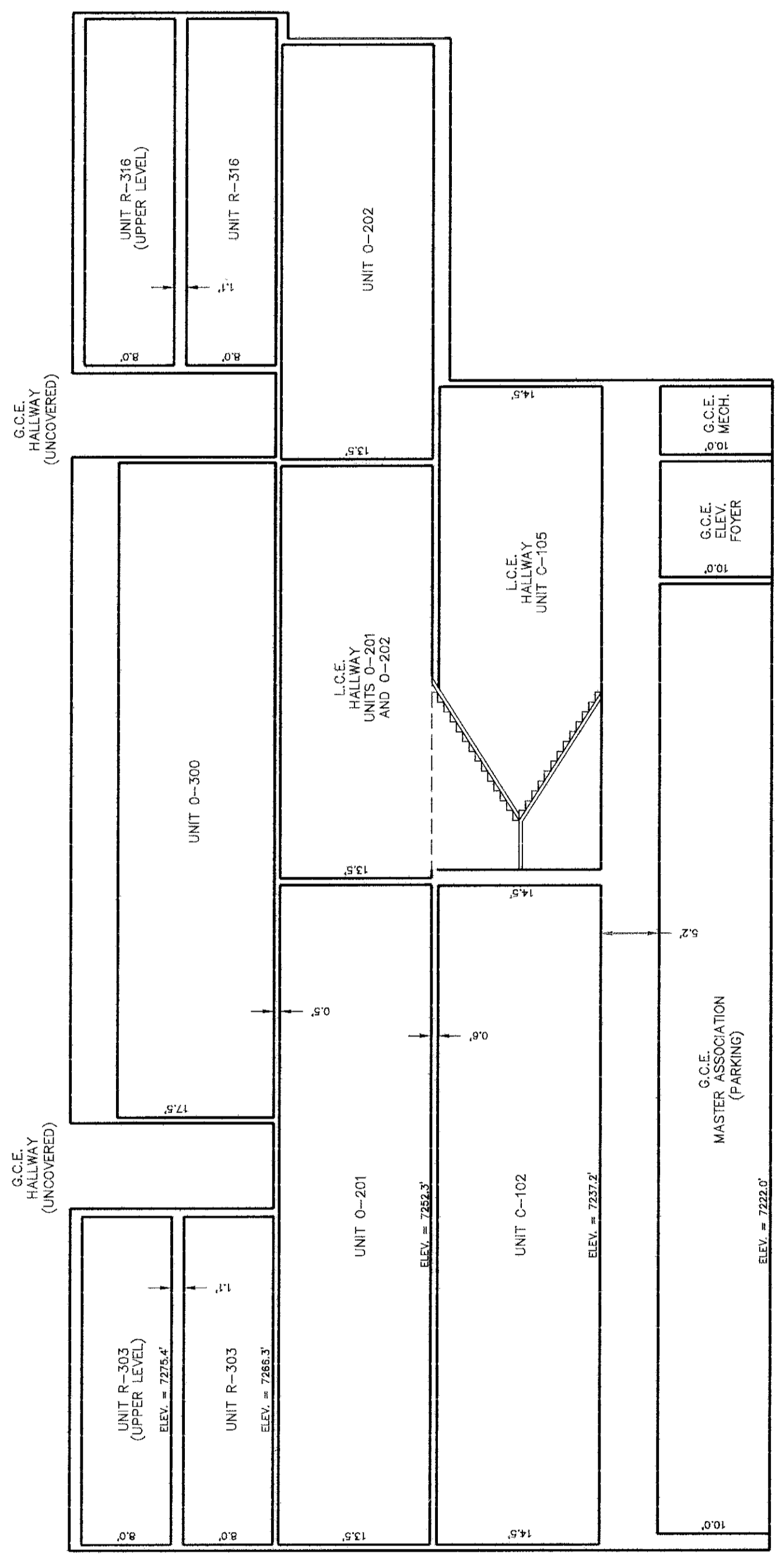


**FOURTH FLOOR LEVEL**



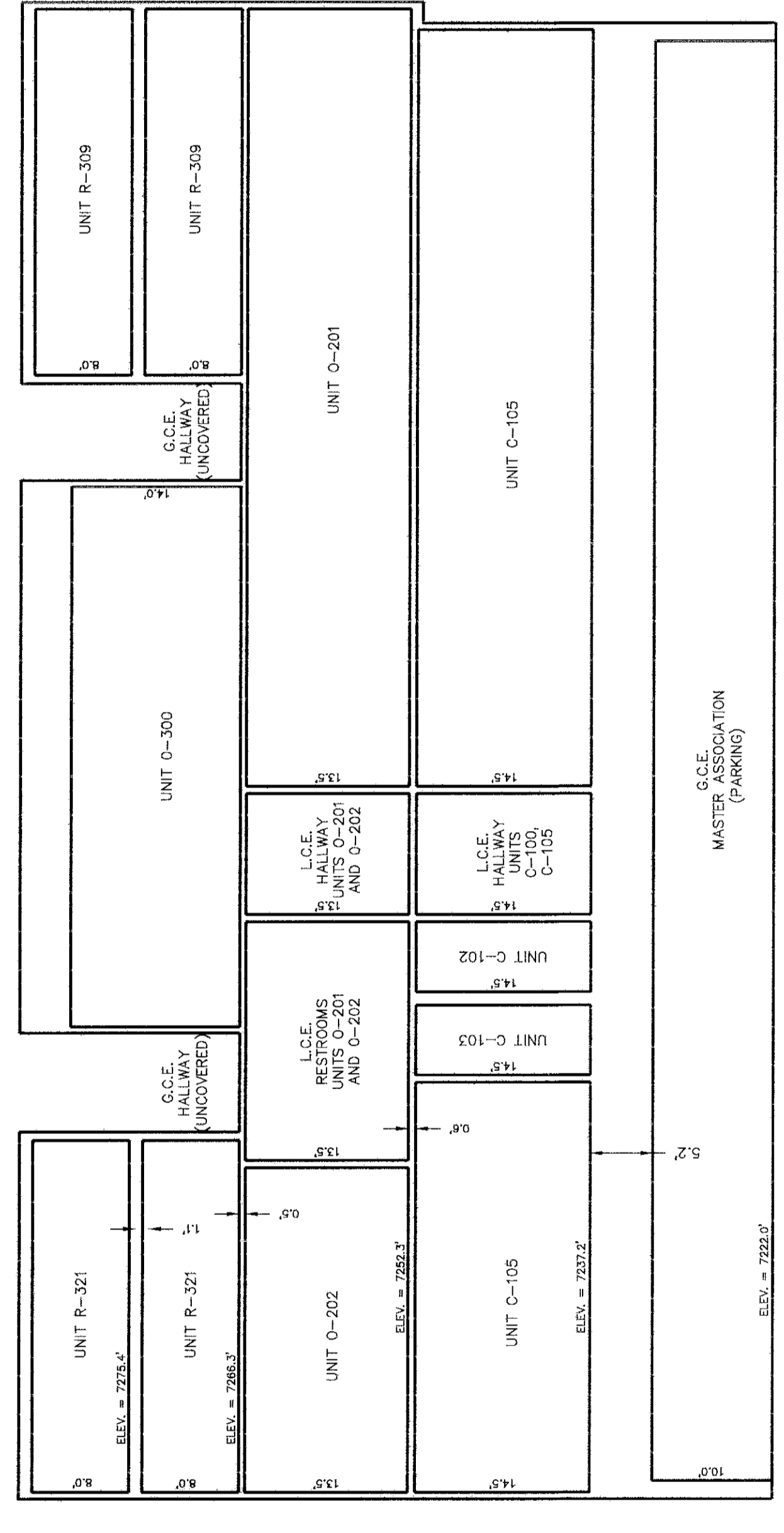
PEAK LAND CONSULTANTS, INC.  
 PEAK LAND SURVEYING, INC.  
 P.O. BOX 244  
 300 LONE HIDE LOOP  
 VAL CO, NE807

CONDOMINIUM MAP  
**RIVERWALK AMBER BUILDING CONDOMINIUMS**  
 A RESUBDIVISION OF LOT 9, RIVERWALK AT EDWARDS, PHASE 7  
 COUNTY OF EAGLE, STATE OF COLORADO



BUILDING SECTION

1 6



BUILDING SECTION

2 6

LEGEND  
 G.C.E. GENERAL COMMON ELEMENT  
 L.C.E. LIMITED COMMON ELEMENT

