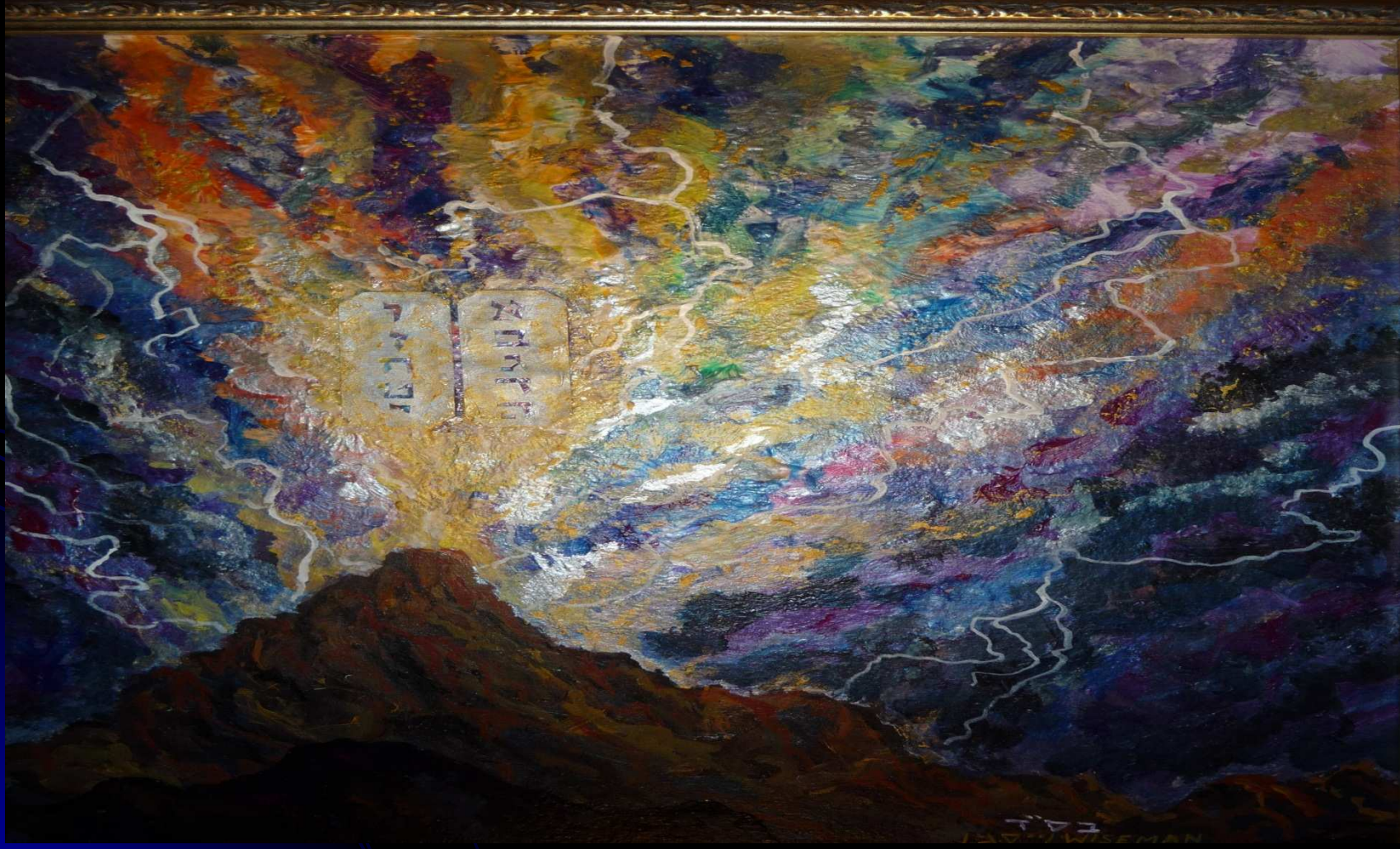


A closer look at worldview thinking:





“People almost invariably arrive at their beliefs not on the basis of proof but on the basis of what they find attractive.”

--Blaise Pascal

Why do you believe what you believe?

SOCIO-LOGICAL REASONS	PSYCHO-LOGICAL REASONS	RELIGI-OUS REASONS	PHILO-SOPHICAL REASONS	Revelatory Reasons:
<p>Parents</p> <p>Friends</p> <p>Society</p> <p>Culture</p> <p>Geography</p> <p>Community</p> <p>Peer Pressure</p>	<p>Comfort</p> <p>Peace of mind</p> <p>Meaning</p> <p>Purpose</p> <p>Hope</p> <p>Identity</p> <p>Feelings or Intuition</p>	<p>Scripture</p> <p>Pastor/Priest</p> <p>Guru</p> <p>Rabbi</p> <p>Imam</p> <p>Church</p> <p>Tradition</p> <p>Mysticism</p>	<p>Consistency</p> <p>Coherence</p> <p>Completeness</p>	<p>Accurate Exegesis</p> <p>Biblical, Theological Systematic Coherence</p>

Adapted from: James Sire, "Why Should Anyone Believe Anything At All" in *Telling the Truth*, D.A. Carson, ed.

Naturalistic Worldview?

VIEW OF GOD	VIEW OF MAN	VIEW OF TRUTH	VIEW OF VALUES:	VIEW OF REALITY
<p>ATHEISM: There is no God.</p> <p>AGNOSTICISM: There is not enough information to determine whether God exists.</p> <p>SECULAR EXISTENTIALISM God does not exist so humanity must learn to live without Him (angst).</p> <p>WITHOUT GOD ??????</p>	<p>CHANCE PRODUCT OF EVOLUTION</p> <p>ENTIRELY MATERIAL-BIOLOGICAL MACHINE .</p> <p>MAN IS FINITE AND WILL ON DAY BECOME EXTINCT</p> <p>THERE IS NO AFTERLIFE</p> <p>THERE IS NO SUCH THING AS "SIN"</p>	<p>TRUTH IS USUALLY UNDERSTOOD AS SCIENTIFIC PROOF OR LOGICAL THINKING</p> <p>KNOWLEDGE GAINED BY FIVE SENSES Or LOGICAL RATIONAL THINKING:</p> <p>ONLY THAT WHICH IS EMPIRICAL OR RATIONAL ACCEPTED AS REAL</p>	<p>NO OBJECTIVE PRESCRIPTIVE VALUES</p> <p>MORALS ARE INDIVIDUAL PREFERENCES, SOCIOLOGICALLY USEFUL BEHAVIOR.</p> <p>CONSCIENCE MAY BE AN EVOLUTIONARY DEVELOPMENT</p> <p>USUALLY SITUATIONAL OR CONTRACT MODEL OF ETHICS</p>	<p>THE MATERIAL UNIVERSE IS ALL THAT EXISTS</p> <p>REALITY IS "ONE-DIMENSIONAL"</p> <p>NO SUPER-NATURALISM.</p> <p>EVERYTHING CAN BE EXPLAINED ON THE BASIS OF PHYSICAL/CHEMICAL LAWS/SOCIO-BIOLOGICAL SCIENCE</p>

POSTMODERN WORLDVIEW:

VIEW OF GOD	VIEW OF MAN	VIEW OF TRUTH	VIEW OF VALUES:	VIEW OF REALITY
<p>PAGANISM:</p> <p>NEW AGE:</p> <p>SPIRITUALISM:</p> <p>NON-THEISM ?????</p> <p>WHY EVEN ASK THE QUESTION?</p>	<p>HUMANS ARE NODES IN CULTURAL-REALITY</p> <p>THEY ARE PRODUCES OF THEIR SUBCULTURAL/SOCIAL SETTING</p> <p>COULD BE A PRODUCT OF EVOLUTION</p> <p>BIASES, SCRIPTED BY SUBCULTURE</p>	<p>TRUTHS ARE MENTAL CONSTRUCTS MEANINGFUL TO INDIVIDUALS/SUBCULTURAL PARADIGMS.</p> <p>TRUTH IS REDEFINED AS A PARTICULAR CONSTRUCT/NO UNIVERSAL TRUTHS</p> <p>RESIST ALL FORMS OF CATEGORIZATION</p>	<p>NO OBJECTIVE MORAL OBJECTIVES</p> <p>ANTI-AUTHORITARIAN.</p> <p>VALUES ARE MENTAL CONSTRUCTS MEANING TO INDIVIDUALS/SUB-CULTURAL PARADIGMS</p> <p>PARTICULAR MORALISM</p> <p>TOLERANCE IS PRIZED VIRTUE</p>	<p>REALITY IS SOCIALLY CONSTRUCTED.</p> <p>THE IDEA THAT THERE IS A REALITY OUT THERE IS A PRODUCT OF GREEK PHILOSOPHY/WESTERN THOUGHT.</p> <p>THE IDEA THAT PEOPLE ARE AUTONOMOUS AND FREE IS A MYTH.</p>

POSTMODERNISTS RESIST ALL FORMS OF CATEGORIZATIONS, STRUCTURES, LABELS, & DEFINITIONS.

THE RELIGIOUS WORLDVIEWS OF PANTHEISM:

VIEW OF GOD	VIEW OF MAN	VIEW OF TRUTH	VIEW OF VALUES:	VIEW OF REALITY
<p>HINDUISM: Polytheism.</p> <p>TAOISM: Ultimate Reality is Impersonal: Ying-Yang Dualism.</p> <p>BUDDHISM: Polytheism</p> <p>NEW AGE BELIEFS.</p>	<p>MAN IS ONE WITH REALITY, THUS MAN IS SPIRITUAL AND ETERNAL</p> <p>INDIVIDUALISM IS AN ILLUSION</p> <p>AN PERSON WHO BECOMES AWAKENED FROM THE "SLEEP OF IGNORANCE" BY DIRECTLY THE TRUE NATURE OF REALITY IS A "BUDDHA."</p>	<p>TRUTH IS AN EXPERIENCE OF UNITY WITHIN "ONENESS OF THE UNIVERSE."</p> <p>TRUTH IS BEYOND ALL RATIONAL DESCRIPTION</p> <p>AWAKENING IS THROUGH MEDITATION, VARIOUS RELIGIOUS PRACTICES, ETC.</p>	<p>BECAUSE ULTIMATELY REALITY IS IMPERSONAL, THERE IS NO REAL DISTINCTION BETWEEN GOOD & EVIL.</p> <p>INSTEAD, "UNENLIGHTENED BEHAVIOR" IS THAT WHICH FAILS TO UNDERSTAND ESSENTIAL UNITY (IGNORANCE).</p>	<p>THE MATERIAL UNIVERSE IS ALL THAT EXISTS</p> <p>BUDDHIST PRACTICE IS TO PUT AN END TO THE STRESS OF EXISTENCE</p> <p>ONLY THE SPIRITUAL DIMENSION EXISTS; ALL ELSE IS ILLUSION.</p> <p>SPIRITUAL REALITY IS ETERNAL & IMPERSONAL.</p>

SPIRITISM & POLYTHEISM:

VIEW OF GOD	VIEW OF MAN	VIEW OF TRUTH	VIEW OF VALUES:	VIEW OF REALITY
<p>ANIMISM: Primitive beliefs, the doctrine of spiritual beings.</p> <p>Spirit beings inhabit ordinary objects, inorganic or organic.</p> <p>The world is populated by “spirit beings” who govern what goes on.</p> <p>POLYTHEISM: There are many gods that exist both beyond and in the universe.</p>	<p>MAN IS A CREATION OF THE GODS LIKE THE REST OF THE CREATURES ON EARTH.</p> <p>OFTEN, TRIBES OR COMMUNITIES HAVE A SPECIAL RELATIONSHIP WITH SOME GODS WHO PROTECT THEM & CAN PUNISH THEM .</p>	<p>FOR SPIRITISM, TRUTH ABOUT THE NATURAL WORLD IS TYPICALLY DISCOVERED THROUGH A SHAMAN FIGURE WHO HAS VISIONS THAT TELL HIM OR HER WHAT THE GODS AND DEMONS ARE DOING & HOW THEY FEEL.</p> <p>TRUTH CAN BE ARBITRARY.</p>	<p>FORM OF TABOOS, WHICH ARE THINGS WHICH IRRITATE OR ANGER VARIOUS SPIRITS.</p> <p>THESE TABOOS ARE DIFFERENT FROM THE IDEA OF “GOOD & EVIL” BECAUSE IT IS JUST AS IMPORTANT TO AVOID IRRITATING EVIL SPIRITS AS IT IS GOOD ONES.</p>	<p>WORLD IS POPULATED BY BEINGS WHO GOVERN REALITY.</p> <p>GOD & DEMONS ARE THE REAL REASON BEHIND NATURAL EVENTS.</p> <p>MATERIAL THINGS ARE REAL, BUT HAVE SPIRITS ASSOCIATED WITH THEM; REALITY CAN BE INTERPRETED SPIRITUALLY.</p>

MONOTHEISTIC WORLDVIEW:

VIEW OF GOD	VIEW OF MAN	VIEW OF TRUTH	VIEW OF VALUES:	VIEW OF REALITY
<p>CHRISTIANITY</p> <p>ISLAM</p> <p>JUDAISM</p> <p>AN INFINITE-PERSONAL GOD EXISTS BOTH BEYOND & IN THE UNIVERSE</p> <p>GOD IS THE CREATOR OF THE UNIVERSE, WORLD, VALUES, LIFE, INCLUDING MAN.</p>	<p>HUMANITY IS THE UNIQUE CREATION OF GOD</p> <p>PEOPLE ARE PERSONAL, SPIRITUAL, & BIOLOGICAL.</p> <p>MAN IS ETERNALLY JUDGED BY GOD.</p> <p>MAN IS TYPICALLY VIEWED AS SINFUL, IN NEED OF REDEMPTION.</p>	<p>TRUTH ABOUT GOD IS KNOWN BOTH BY GENERAL & SPECIAL REVELATION</p> <p>REVELATION, USE OF FIVE SENSES, & RATIONAL THOUGHT (KNOWLEDGE)</p> <p>TYPICALLY, CORRESPONDENT / COHERENT VIEW OF TRUTH.</p>	<p>MORAL VALUES ARE THE OBJECTIVE EXPRESSION OF AN ABSOLUTE MORAL BEING</p> <p>TYPICALLY BELIEVE IN NATURAL, MORAL LAW & SPECIAL REVELATION, A BODY OF TRUTH REVEALED BY GOD FOR HONORING HIM.</p> <p>TYPICALLY, SOME ABSOLUTE FORM OF ETHICS.</p>	<p>REALITY AS IT IS CREATED BY GOD</p> <p>REALITY IS BOTH MATERIAL SPIRITUAL</p> <p>MIRACLES CAN AND DO OCCUR.</p> <p>THE UNIVERSE HAS A BEGINNING & WILL HAVE AN END.</p> <p>OFTEN, CLASSICAL REALISM.</p>

BIBLICAL CHRISTIAN WORLDVIEW:

VIEW OF GOD	VIEW OF MAN	VIEW OF TRUTH	VIEW OF VALUES:	VIEW OF REALITY
<p>DOCTRINE OF THEOLOGY PROPER</p> <p>DOCTRINE OF CREATOR – CREATION DISTINCTION.</p> <p>DOCTRINE OF TRINITY</p> <p>DOCTRINE OF CHRISTOLOGY</p> <p>DOCTRINE OF PNEUMATOLOGY</p>	<p>DOCTRINE OF ANTHRO-POLOGY</p> <p>DOCTRINE OF THE IMAGE OF GOD IN MAN</p> <p>DOCTRINE OF EVIL & SIN</p> <p>DOCTRINE OF SOTERIOLOGY</p> <p>ECCLESIOLOGY/ ISRAELOLOGY</p> <p>BIBLICAL JUDGMENTS</p>	<p>DOCTRINE OF TRUTH: Typically correspondence – coherent models.</p> <p>DOCTRINE OF PROLEGOMENA & BIBLIOLOGY</p> <p>HERMEN-EUTICS</p> <p>BIBLICAL APPLICATION OF TRUTH</p> <p><i>SOLA SCRIPTURA</i></p>	<p>MORAL VALUES ARE THE OBJECTIVE TRUTHS SOURCED IN THE GOD OF THE BIBLE</p> <p>NATURAL, MORAL LAW & SCRIPTURE FOR GODLY LIVING.</p> <p>ABSOLUTE FORM OF ETHICS:</p> <p>Qualified absolutism; conflict absolutism; graded absolutism.</p> <p>STEWARDSHIP</p>	<p>REALITY CREATED BY GOD OF BIBLE.</p> <p>FIRST PRINCIPLES OF LOGIC</p> <p>REALITY IS MATERIAL SPIRITUAL; MIRACLES CAN & DO OCCUR.</p> <p>ESCHATOLOGY.</p> <p>ANGELOLOGY- DEMONOLOGY- SATANOLOGY.</p>