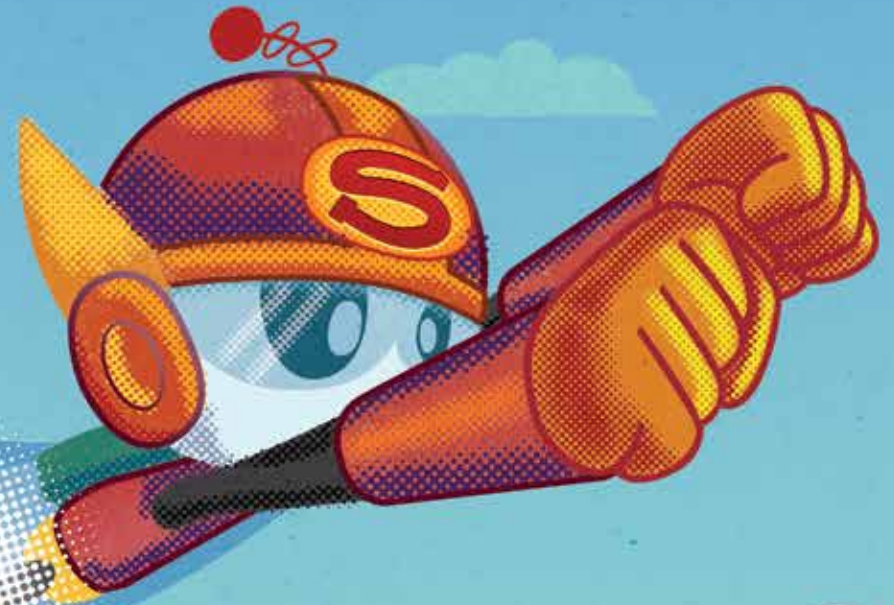


AWANA[®]



YES!

AWANA WORKS IN YOUR CHURCH!

Your church has unique goals and challenges. You know those needs better than anyone.



That's why Awana is built to serve each church's distinct situation.

Yes! Regardless of your size, style, mission, budget or location, Awana® is prepared to come alongside you in whatever ways your church needs support.

- Looking for a complete ministry for age 2 to high school?
- Want a program just for a specific age group?
- Need Bible-centered curriculum for children or for youth?
- Seeking proven evangelism tools for winning kids to Christ?
- Looking for ways to involve parents?

Yes, you can find all these solutions (and many more) with Awana.

WILL AWANA SUPPORT MY CHURCH REACHING OUR COMMUNITY?

Yes! Awana has a proven record for child and youth evangelism around the world. The exciting format of weekly gatherings draws kids who don't know Jesus into your church.

What happens once non-churched kids arrive at Awana? From the first time they visit, they consistently encounter the gospel message in Awana curriculum and teaching lessons. Their parents will, too, through special outreach events and as they lead their children through the curriculum.



Bakers



Kims



Johnsons



Smiths



Salazars



Your Church



Williams



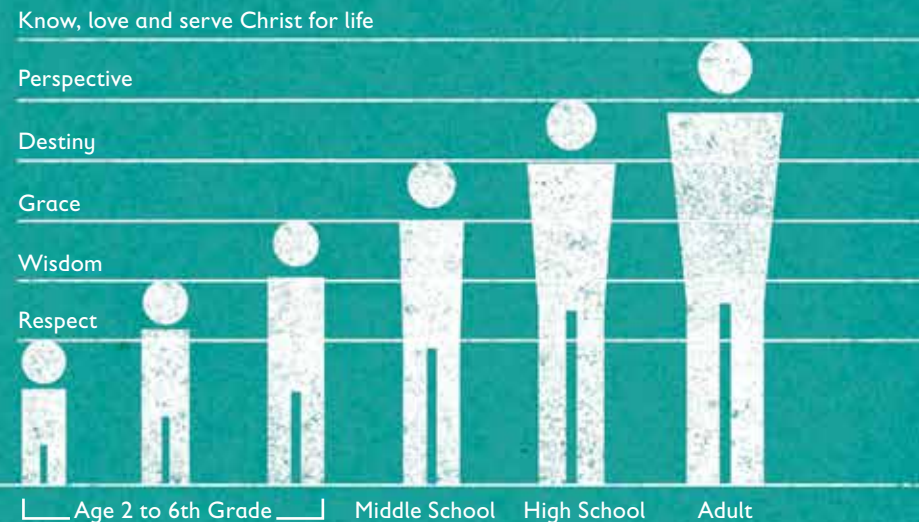
Pinedos



WILL AWANA WORK WITH MY CHURCH TO DISCIPLE CHILDREN AND YOUTH?

Yes! Awana programs instill kids with enduring faith in Christ. Our curriculum and teaching weave five key biblical character traits into kids' hearts. Clubs for age 2 to sixth grade develop a biblical foundation for faith based on respect for God, wisdom from His Word and grace in all relationships. Middle school and high school programs cultivate a sense of God's destiny and perspective in teenagers.

The goal of this teaching is to prepare kids to know, love and serve Christ – for the rest of their lives.





Plug Awana into your current ministries!

WILL AWANA FIT INTO MY CHURCH'S CURRENT MINISTRY STRUCTURE?

Yes! You can plug Awana into your church's existing programs however it works best for your needs. Here are just a few examples:

- Run Awana while your weeknight worship service or adult Bible studies meet.
- Use Awana Bible teaching lessons or curriculum in your Sunday school classes.
- Offer the Awana preschool programs during your weekday women's small group meetings.
- Teach Awana middle school and high school Bible studies in your youth ministry small groups.



WILL AWANA HELP MY CHURCH PARTNER WITH PARENTS TO RAISE THEIR KIDS SPIRITUALLY?

Yes! Awana supports the Bible's call for parents to lead their children's spiritual development. Awana brings parents and churches together to build kids' lives on God's Word. Our curriculum creates easy opportunities for dads and moms to get involved in their child's discipleship week after week. The more that parents work with their kids, the more committed they become to raising their kids spiritually!

WILL AWANA ENERGIZE OUR EFFORTS TO RECRUIT, MOTIVATE AND DEVELOP VOLUNTEERS?

Yes! As one of the world's largest volunteer organizations, we offer expertise and experience to your church. Once you start Awana, we provide a variety of support:

- On-site training
- Online training clinics
- Role-specific materials
- Regional training conferences
- Specialized conferences for your top Awana leadership

We also offer free resources that help your church recruit, encourage and keep volunteers in your Awana ministry.



Learn more at awana.org/yes

The screenshot shows the Awana website homepage. At the top, there is a navigation menu with links for 'About Us', 'Donate', 'Awana Locator', 'Inquire About Awana', 'Press Room', 'Contact Us', and 'Español'. A search bar is located on the right side. Below the navigation, there is a blue banner with the text 'Welcome to Awana' and an illustration of a church building. Underneath the banner is a section titled 'An Interactive Overview' which contains a grid of video thumbnails. The thumbnails are arranged in two rows. The first row includes: 'Piggles AGES 2-3', 'Cubbies PRESCHOOL', 'Sparks GRADES K-2', 'LARGE GROUP TIME', 'GAME TIME', 'Trail & Training GRADES 3-6', 'Trek MIDDLE SCHOOL', and 'JOURNEY HIGH SCHOOL'. The second row includes: 'PASTOR'S OFFICE', 'Awana EVENTS', and a 'Start Here' button. Below the thumbnails is a horizontal bar with the words 'Respect', 'Wisdom', 'Grace', 'Destiny', and 'Perspective'. Callout lines from the right side of the image point to various thumbnails: one points to the 'Piggles' thumbnail, another to the 'Sparks' thumbnail, a third to the 'LARGE GROUP TIME' thumbnail, a fourth to the 'GAME TIME' thumbnail, a fifth to the 'Trail & Training' thumbnail, a sixth to the 'Trek' thumbnail, a seventh to the 'JOURNEY' thumbnail, an eighth to the 'PASTOR'S OFFICE' thumbnail, a ninth to the 'Awana EVENTS' thumbnail, and a tenth to the 'Start Here' button.

Videos of each core Awana program, plus need-to-know info

Short video just for pastors

Great overview of Awana

YES!

AWANA WORKS IN YOUR CHURCH!



Did you receive this brochure (DVD) from a source outside of awana.org?

If YES, thanks so much for your interest in Awana!

We'd love to answer your questions on how Awana can work in your church.

Contact us at 888-292-6249 or info@awana.org.

If you received this packet through awana.org, we will contact you soon!

Any questions? Jot them down here. We'll be happy to answer your questions when we connect with you.

1. _____

2. _____

3. _____

We look forward to connecting with you and serving your church!

