

Reverend Steven Beckham, Pastor  
5872 Naples Plaza Long Beach, California 90803-5044  
Website: www.gdlclb.org Telephone: 562.438.0929



## Gloria Dei Lutheran Church

the little church with a big heart!

### THOUGHTS ALONG THE WAY...

Once again we find ourselves in Advent, the season of waiting, the season of preparation, the season of expectation and anticipation. Advent looks forward to what is coming. It is the season of what is about to happen.

*"In the silence of a midwinter dusk, there is a sound so faint that for all you can tell it may be only the sound of the silence itself. You hold your breath to listen. You are aware of the beating of your heart. The extraordinary thing that is about to happen is matched only by the extraordinary moment just before it happens. Advent is the name of that moment." ~ Frederick Buechner*

Advent is a season of remembering. It is a season for playing the old songs that bring alive all the old memories and emotions. It is a season for digging out the old recipes to make the old favorites so we have something sweet to sustain us as we reminisce about those no longer with us. It is a time to look at all the old pictures and tell the old stories of years gone by.

*"Advent's intention is to awaken the most profound and basic emotional memory within us, namely, the memory of the God who became a child. This is a healing memory; it brings hope. The purpose of the Church's year is continually to rehearse her great history of memories, to awaken the heart's memory so that it can discern the star of hope." – Pope Benedict XVI*

Advent is a time to sit still. Advent is a time to reflect and ponder. Advent is a time for discernment, a time to make sure your eyes and ears are properly adjusted to see and hear Christ with us.

*"The Lord is coming, always coming. When you have ears to hear and eyes to see, you will recognize him at any moment of your life. Life is Advent; life is recognizing the coming of the Lord." ~ Henri Nouwen*

Advent is a time to open our hearts and minds to wonder and joy and love. Advent is a time to prepare ourselves to hear once again the life-changing news of Emmanuel, God with us.

...Continued on page 2

## Inside this issue:

Weekly Online Inspiration	2
Tribute —	3
God's Work. Our Hands.	4
Thoughtful Giving	5
Church Council Update	6
Proclamations & Events	7

*Thoughts Along the Way Continues...*

*"God is coming! God is coming! All the element we swim in, this existence, echoes ahead the advent. God is coming! Can't you feel it?" ~ Walter Wangerin*

Advent does not end with the birth of Jesus in Bethlehem. Advent pauses at the shed behind the inn where we meet up with God for the rest of our journey home.

*"For outlandish creatures like us, on our way to a heart, a brain, and courage, Bethlehem is not the end of our journey but only the beginning – not home but the place through which we must pass if ever we are to reach home at last." ~ Frederick Buechner*

The road of Advent takes us through our tenderness for the past, endows us with courage for the present, and kindles our hope for the future as we warm our hearts to Christmas.

*Pro Gloria Dei, Pastor Steve*



LET ALL THAT YOU  
DO BE DONE IN  
*love*  
- 1 COR 16:14

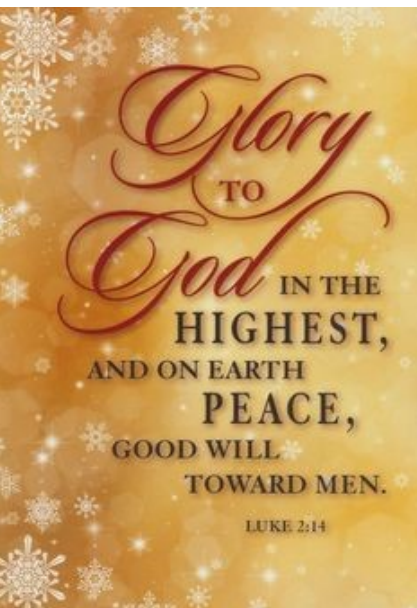


Editor's Note:

Reminder....access Pastor Steve's always excellent, always thought-provoking sermons! So glad to be able to review, contemplate, then share his messages with friends and family. I recently sent the website URL to several colleagues and neighbors who don't have a church home. Most are appreciative that these weekly pastoral messages are published, relevant, and easy to find! Perhaps you can do the same...especially relatable for individuals who proclaim faith in God but have an aversion to traditional religious institutions.

Website: [www.thoughtsalongtheway.net](http://www.thoughtsalongtheway.net)

**THE LORD IS MY STRENGTH AND MY SHIELD; MY HEART TRUSTS IN HIM. ~ PSALM 28:7**



## TRIBUTE TO LYN HARRIS HICKS

February 23, 1928 to September 2, 2022

Born Jean Lyndall Harris, on February 23, 1928, in Redlands, California. Married on November 25, 1947 (Thanksgiving break in sophomore year of college) to Kingdon Charles (K.C.) Hicks. She graduated from UCLA with bachelor's degree in Political Science in 1950 and teaching credential in 1951.



Lyn moved to San Clemente from North Hollywood in 1959 with K.C. and two young daughters. She worked tirelessly throughout her life for the benefit of all humanity, especially in the areas of civic responsibility, accessible housing, environmental preservation, education, women's rights, energy for the future, and world peace. She educated the public for more than 50 years about consequences of obtaining energy through nuclear power. Co-founded Groups United Against Radiation Dangers (GUARD) working toward replacement of nuclear energy with safer, renewable energy sources.

Appointed by Governor Jerry Brown to research and report on Emergency Preparedness and Evacuation Capability for Southern California. She worked closely with San Clemente Green to establish a Sustainability Action Plan for San Clemente, promoted solar power, community gardens, and tree planting. Staunchly opposed nuclear power after heeding a request to research and educate herself, when San Clemente's SONGS was first proposed.

Co-founded and provided leadership for Coalition for Responsible and Ethical Environmental Decisions (CREED), working to protect local environmental resources and assets. Lyn also crusaded for low-income housing in San Clemente and was integral in development of the Mary Erickson Foundation project.

As a pioneer of Guidance Center of Orange County, organized four auxiliaries along the Orange County Coast and was instrumental in establishing San Clemente's Coral Key's Thrift Shop to benefit underprivileged children and families.

A charter member of several organizations' local chapters, Lyn also actively served and held leadership roles at district and state levels in Parent-Teachers Association (PTA), American Association of University Women (AAUW), League of Women Voters, Soroptimist International, and United Nations Association-USA, Southern California YWCA, South Coast United Fund, Capistrano Beach Chamber of Commerce, Orange County Press Club, and California Press Women. She worked as reporter, photographer, columnist, and editor at San Clemente Sun Post, and freelanced for the Daily Pilot and other area newspapers, winning awards for journalistic and editorial efforts. Lyn was the recipient of several honors, including the City of Los Angeles Citizen of the Year.

Fondly remembered...we will miss her at Gloria Dei !

**Sandy Nelson and Twyla Karkut attended the LSSC (Lutheran Social Services Southern California) HOPE Gala and received an award on behalf of our church family for our continuing and faithful support of LSS in Long Beach.**





# GOD'S WORK. OUR HANDS.



**NURTURE A MEANINGFUL CHRISTMAS...**



Let us prepare our hearts and our homes for the season of Advent. This holy time of year is for prayer, reflection, and spiritual preparation for Christmas Day .

Each Sunday of the Advent season focuses on one of four themes, or virtues. The themes can be different based on denominations or preferences. The most common themes are hope, peace, joy, and love. Some traditions include lighting a specific candle on the wreath to symbolize each of the four virtues.

**HOPE. PEACE.**  
**JOY. LOVE.**



**FRUIT of the SPIRIT**  
~ Galatians 5:22-23



Our sanctuary is beautifully decorated to launch us into Advent thanks to Gary Bockman, Phil Como, Sandy Nelson, Beth Rotsel and Pastor Steve. The Advent streamers and banners made by Barbara White and the embroidered panels given by Pastor Steve and Meri are like frosting on the cake!

~ Karen Como



# THOUGHTFUL GIFT GIVING

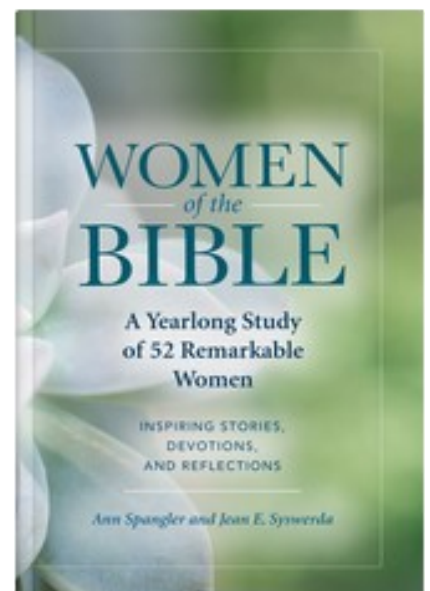


Give something **unexpected** this Christmas.

Find something special for your loved ones this holiday season. **ELCA Good Gifts** are sure to put a smile on someone's face! What a delightful way to surprise your family and friends by giving to those in need!



Take a much-needed break from all the "screentime," and relax with **Guideposts** magazine. Escape into the beautiful pages and feel your spirits soar. You'll be amazed at how uplifting, true stories of positive people can help fill your own life with more hope and joy and see the remarkable ways God is at work in your life. Buy a few monthly subscriptions and help yourself and someone else take comfort in reassuring stories of how others leaned on faith and overcame struggles. **Discover** new ways to live inspired... **Refresh** your prayer life... **Reflect** on inspiring quotes... now isn't that a great gift idea!



**Guideposts is published bi-monthly or 6 issues annually. Go online and take a look at the new magazine format and strengthen your faith, fortify your spirit, and grow closer to God with each beautiful, inspiring issue.**

## SOUTHWEST SYNOD MISSION SUPPORT...



Our faith in a loving God frees us to be generous and to participate boldly in God's work in the world. Stewardship not only about paying the church's bills, but about how congregations can "be the church together" - what Bishop Eaton calls a "manifestation of the unity we have through baptism into the body of Christ." **To be generous in response to God's generosity towards us is one way we live out God's call to love our neighbor, in ways that no individual, congregation or synod can do alone.** Our Synod sends half of the mission support it receives to ELCA Churchwide, and distributes a significant percentage of the remainder back to congregations in the form of grants, as well as educational and administrative support. Mission Support dollars are very real, present, and working on every level of church structure. ~ Source: ELCA website



## COUNCIL UPDATE



Happy New Church Year! Once again, we have so many ways to support and add joy to those within our community as we prepare our hearts for the coming of Christ. Sandy, our in-house elf, has made gift boxes and lists of items for the various mission partners we support especially during Christmas. Please consider gifts to individual mission partners or make a monetary gift to Gloria Dei and write 'Holiday Fund' on the memo line.

**LSS:** On December 17<sup>th</sup> will celebrate their 25<sup>th</sup> annual Christmas event for the families within the Long Beach area. LSS have requested unwrapped toys for children 0-11 years and Target or Walmart gift cards for the older children. They are also in need of canned goods for their food baskets as well as monetary gifts for the purchase of food and supplies for the party. Donations are needed by Sunday, December 11<sup>th</sup>. On November 11<sup>th</sup>, Sandy Nelson and Twyla Karkut attended the LSSSC (Lutheran Social Services Southern California) HOPE Gala and received an award on behalf of our church family for our continuing and faithful support of LSS in Long Beach.

Special thanks to Kalani Caldwell (Marilyn Bittle's daughter), organized the 11<sup>th</sup> annual Thanksgiving Canned Food Run for the swim teams at Long Beach Poly. Each member of the team ran from Poly to LSS on Pine Street with a canned good in each hand. Amazing contribution and so meaningful for the participants and recipients!

**Fe y Esperanza:** The annual Los Posadas celebration will be held the week before Christmas. Small gifts of toys are given to the children in celebration of Joseph and Mary's journey to Bethlehem to welcome baby Jesus. Monetary gifts are appreciated so they can purchase the toys. The week before Thanksgiving, Pastor Marta and her team delivered turkeys and food baskets to farm workers in Guadalupe, California. Pastor Marta was so thankful for our monetary gifts to make these purchases possible.

**Long Beach Men's and Women's Shelter:** As the cold weather approaches, the shelter is in need of gently used warm jackets, blankets and new socks. Children jackets are needed too. Please bring your donations and place them in one of the boxes in the church narthex. These items will be distributed just prior to Christmas Eve.

**ELCW:** On December 1<sup>st</sup> at 11:00 a.m. the women will decorate the Christmas tree with the traditional Chrismon ornaments lovingly made so many years ago. Lunch will be provided and all women are welcome to join us.

In November the ELCW women prepared 20 hygiene kits for unsheltered women. These kits were delivered to LSS and were greatly appreciated. The ELCW library has many wonderful books available for a small donation. There are numerous 'free' greeting cards available for all occasions including many Christmas cards to send to your friends and family.

**ELCA Good Gifts:** Go 'Tail-it' on the mountain! See our ELCA Good Gifts tree in the Fellowship Hall and consider purchasing pigs, goat, cows, chickens or honeybees. Choose an ornament and write your name on the back and enclose a check made payable to Gloria Dei and place the check for your animal(s) of choice in the box next to the tree.

**Adult Education:** On Wednesday mornings at 10:00 via Zoom, we are gaining new perspectives on the bible through a study of "What is the Bible?" By Rob Bell. Every week is a unique discussion and you can join us anytime. On Sunday mornings at 9:00 we're studying the Gospel of Mathew using a new translation by Thomas Moore.

We joyfully share the love of the Lord with those we serve, as we demonstrate 'God's Work Our Hands' all year and especially during Christmas-time. Your contributions to the Gloria Dei Holiday Fund and to our individual mission partners insure that so many that are in need are cared for. We are a truly blessed family of believers!

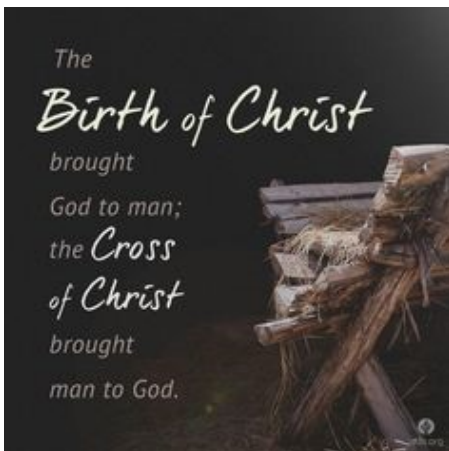
It's such a blessing to share the season of Advent with our church family and joyfully celebrate the coming of Christ this Christmas ...Karen Como

# PROCLAMATIONS AND EVENTS



LORD, MAKE US GOOD GUESTS AND HOSTS OF YOUR KINGDOM WHO REFLECT THE HUMANITY AND GENEROSITY OF OUR SAVIOR. IN JESUS' NAME. AMEN

**GLORY TO GOD IN THE HIGHEST!**

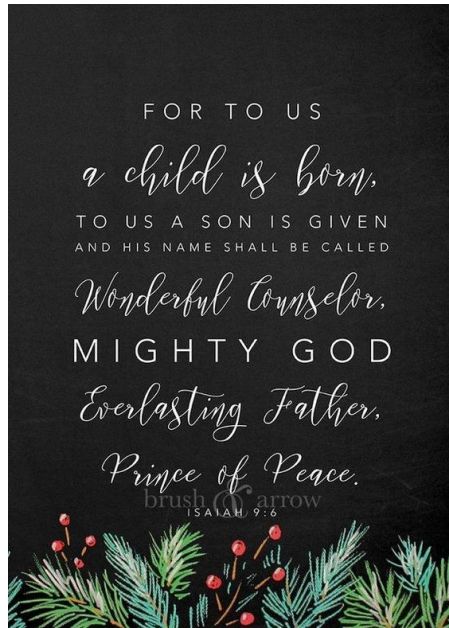


**THE RICHES THE WISDOM THE KNOWLEDGE OF GOD!**

GLORIA DEI — Our name means The Glory of God, so we try to live accordingly. Our life together as a family of faith is built on worship, service, education and friendship.



**GROWING IN FAITH LIFTED BY HOPE GUIDED BY LOVE**



**MERRY CHRISTMAS**



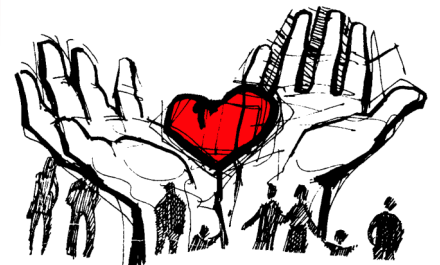
**CHRISTMAS EVE @ 5:00 PM ! CHRISTMAS DAY @ 10:00 AM !**



HE GIVES US THE VICTORY THROUGH OUR LORD JESUS CHRIST. ~ 1 Corinthians 15:57



**JESUS... BEST. GIFT. EVER.**



**LOVE ONE ANOTHER WITH MUTUAL AFFECTION; OUTDO ONE ANOTHER IN SHOWING HONOR!**

~PSALM 12:10

**GLORIOUS DEI NEWSLETTER DEADLINE: DECEMBER 27**

SUBMIT COMMENTS, STORY IDEAS, RESOURCES & SUGGESTIONS to editor via email: [pbockman@fullerton.edu](mailto:pbockman@fullerton.edu)

**GLORIA DEI EVANGELICAL LUTHERAN CHURCH**

**5872 Naples Plaza  
Long Beach, California 90803**

Non-Profit Organization  
U.S. Postage paid  
Long Beach, California  
Permit No. 2190



Return Service Requested





