

# Tori Portrait in Watercolor

**The following are the images and instructions for this watercolor portrait class.**

Please print this document and others sent to you as part of your class registration. You will be printing the photo of the painting, reference photo, a black and white version, and the line drawing. The line drawing should print out at the desired project size, on most computers. This way you can trace on a 8 x 10 inch surface.

Trace the line drawing onto your watercolor paper. I am using a 9 x 12 sheet of Arches, 140 lb. cold pressed paper.

## Materials

Brushes I used: (mine are Hobby Lobby Golden Taklon, Master Touch) Any watercolor brush, meaning not stiff or bristle.

¾ inch bright (for background)

No. 8 round

No. 0 small round

Pigments: (mine are either Windsor Newton, Professional, WC tubes, or Hobby Lobby tubes.) Any good watercolor brands are fine.

Burnt Sienna

Burnt Umber (either of these if you do not have both will work)

Yellow Ochre

Cadmium Red (a primary red)

Cadmium Yellow (a primary yellow)

Cerulean Blue (cobalt or just the ultra-marine will work)

Ultra Marine Blue (as above either of these blues if you do not have both)

If you are new to watercolors, I recommend starting with one of my basic watercolor classes, to establish the foundational knowledge and techniques necessary to being successful in this exciting medium.

1-2 Large jars of clean water

Paper Towels

Hair Dryer (optional, just to speed the drying)

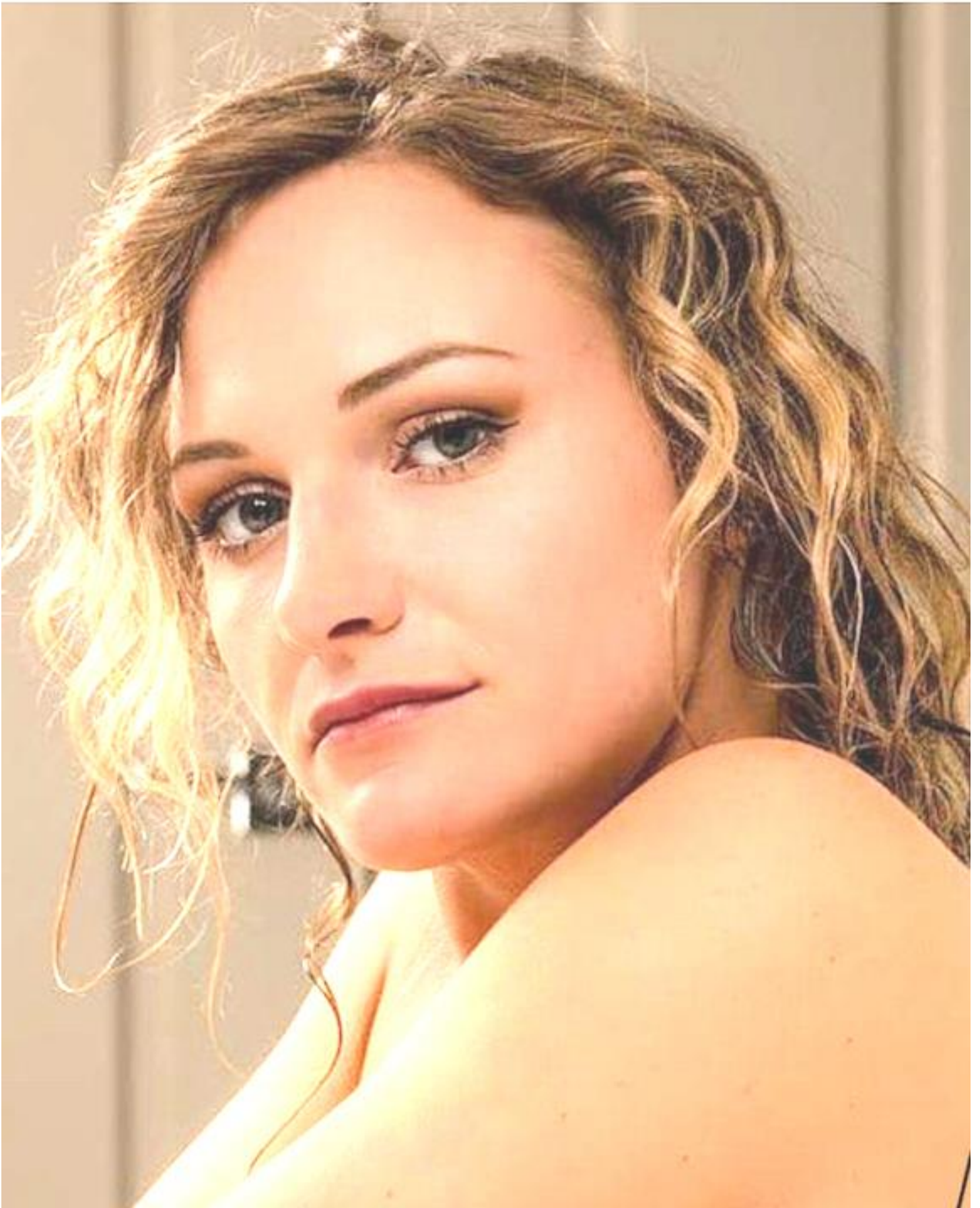
I tape my watercolor paper down on some board to help prevent some curling.

***Looking forward to seeing you in class!***

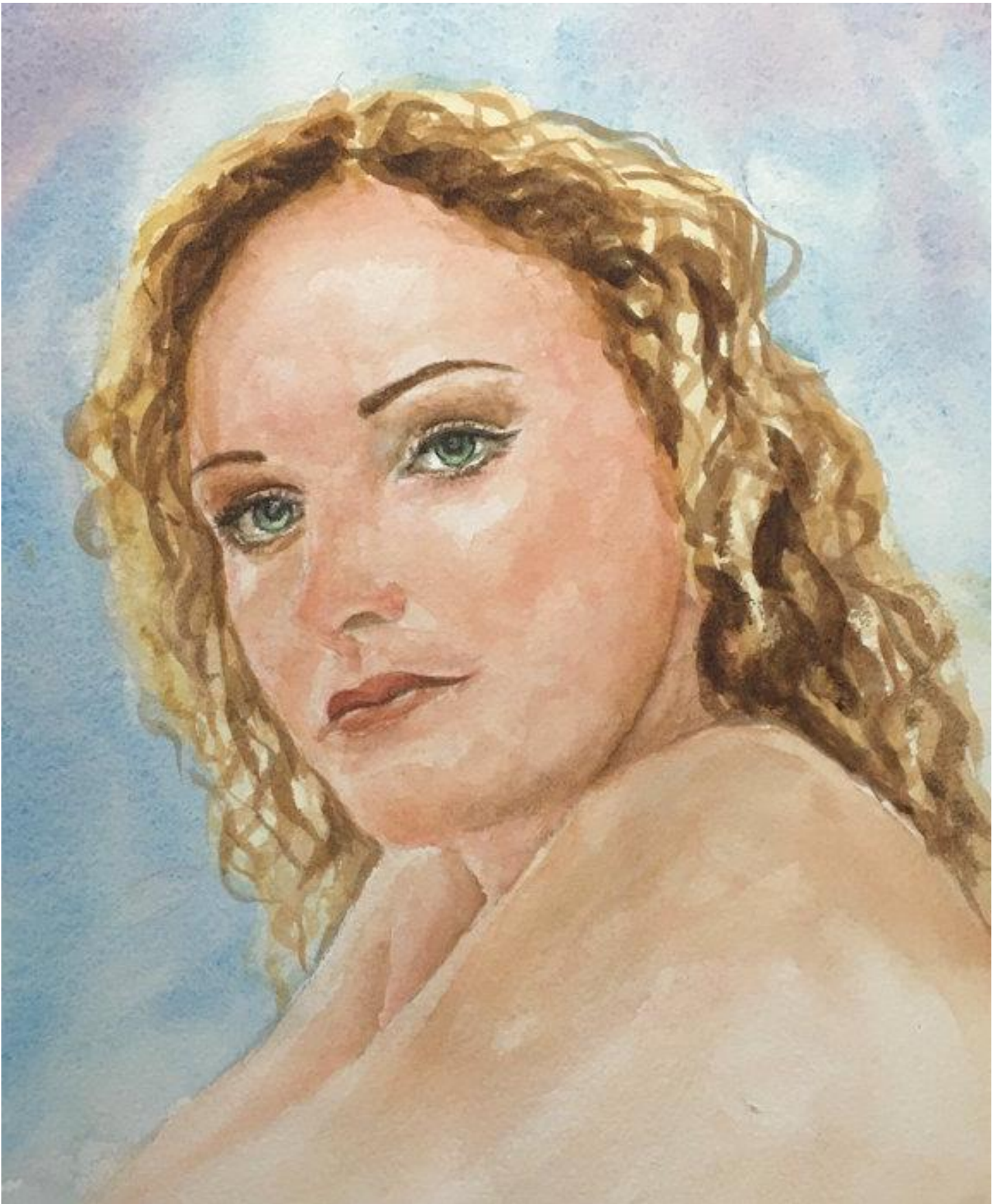
# My Palette



REFERENCE PHOTO



**PAINTING PHOTO**



LINE DRAWING

