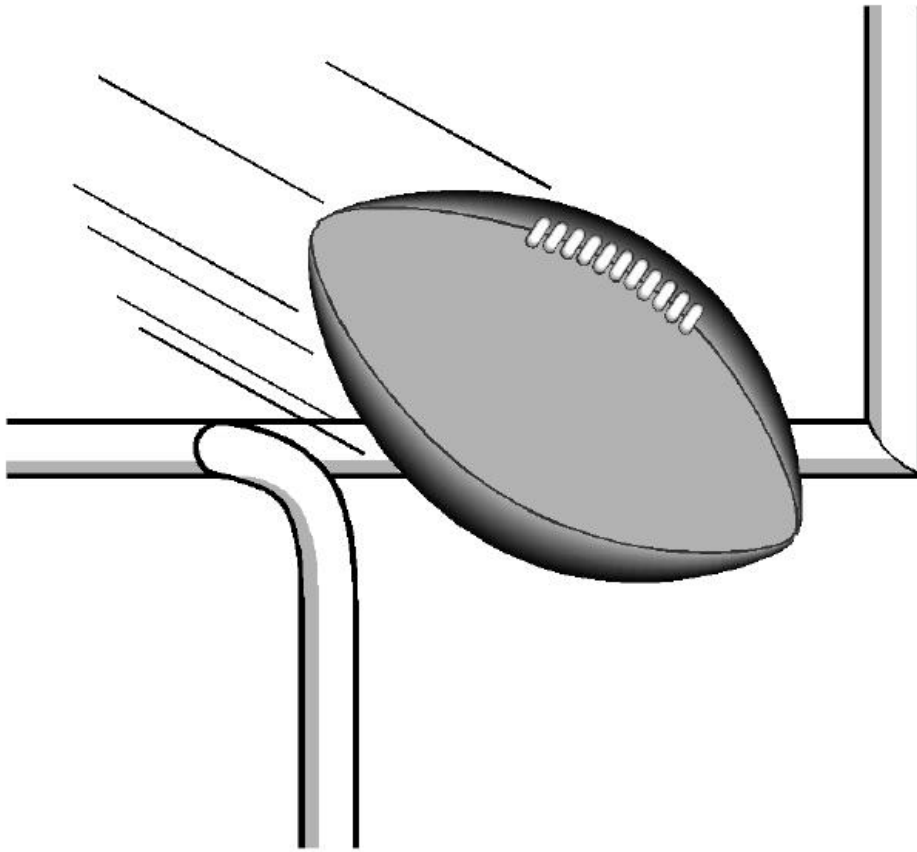


1  
2  
3  
4  
5  
6  
7  
8

**Jefferson-Shelby**  
**YOUTH FOOTBALL**  
CONSTITUTIONAL BY-LAWS



9  
10

1 **JEFFERSON-SHELBY YOUTH FOOTBALL**  
2 **CONSTITUTIONAL BY-LAWS**

3  
4 ALL CONSTITUTIONAL BY-LAWS ARE COVERED IN CODE OF ALABAMA 1975  
5 VOL. 75 OF TITLE 10. NOT FOR PROFIT CORPORATIONS ARE SUBJECT TO SOME  
6 OR ALL OF THE STATUTES OF CODE PERTAINING TO CORPORATIONS,  
7 PARTNERSHIPS, AND ASSOCIATIONS.

8  
9 OBJECTIVE

10  
11 THE OBJECTIVE OF JEFFERSON-SHELBY YOUTH FOOTBALL IS TO PROMOTE  
12 YOUTH FOOTBALL AMONG THE YOUTH OF JEFFERSON AND SHELBY COUNTIES  
13 AND ANY OTHER INTERESTED PARTIES. A YOUTH, FOR THE PURPOSE OF  
14 COMPETING IN THIS ASSOCIATION, IS A PERSON WHO QUALIFIES UNDER THE  
15 AGE AND WEIGHT RESTRICTIONS HEREINAFTER DEFINED. AN AMATEUR FOR  
16 THE SAME PURPOSE, SHALL BE ONE WHO COMPETES, SOLELY FOR THE  
17 PLEASURE AND BENEFITS HE/SHE DERIVES THEREFORE: AND WHO DOES NOT  
18 MAKE HIS/HER LIVING PLAYING FOOTBALL OR RECEIVE ANY PORTION OF  
19 HIS/HER INCOME FROM SAID SOURCE.

20  
21 FOR THE REMAINDER OF THIS DOCUMENT, JEFFERSON-SHELBY YOUTH  
22 FOOTBALL WILL BE REFERRED TO AS “JSYF” OR “THE LEAGUE.” ALL YOUTH  
23 FOOTBALL ASSOCIATIONS THAT ARE MEMBERS OF JSYF WILL BE REFERRED TO  
24 AS “MEMBERS” OR “MEMBERSHIP”.

1 **SECTION I – GOVERNMENT**

2  
3 **A. BOARD OF DIRECTORS**

4  
5 1. General Powers, Number, Tenure and Qualifications. The affairs and business of the  
6 corporation shall be under the management and control of the Board of Directors “the  
7 Board”; which is comprised of an Executive Board and a Member Board. Each Member  
8 Park shall appoint a Park Representative to the JSYF Member Board of Directors. The  
9 number of Directors shall be at least three (3).. The initial Board of Directors shall  
10 consist of five (5) members. The Board shall set the number of Directors for the  
11 following year at its annual meeting. The Executive Board shall be elected at each  
12 annual meeting of the Board of Directors, held at the time and place herein below  
13 prescribed, and shall hold office until the next succeeding annual meeting of the Board  
14 of Directors and until their successors are elected and qualified. Vacancies in the  
15 Executive Board may be filled by the affirmative vote of a majority of the remaining  
16 Directors, though less than a quorum of the Board of Directors. Vacancies in the  
17 Executive Board shall be filled only at a special or annual meeting thereof and those  
18 chosen to fill vacancies shall hold office for the unexpired term in respect of which such  
19 vacancy occurred.  
20

21 Meetings, General. Meetings of the Board of Directors, regular or special, may be held  
22 either within or without the State of Alabama at such places as the President may from  
23 time to time determine and as authorized by the laws of the State of Alabama. However,  
24 meetings shall be held at least once per month.  
25

26 Annual Meetings. The annual meeting of the Board of Directors may be provided for by  
27 resolution of the Board setting the time and place of such meeting. No further notice of  
28 any such annual meeting shall be required, but whatever notice as is desires may be  
29 given as directed by the President or Resolution of the Board.  
30

31 Regular Meetings. Regular meetings of the Board other than its annual meeting, shall be  
32 held once each month provided for by resolution of the board setting the time and place  
33 of such meeting. No further notice of any such annual meeting shall be required, but  
34 whatever notice as is desires may be given as directed by the President or Resolution of  
35 the Board.  
36

37 Special Meetings. Special meetings of the Board may be called by the President, on two  
38 days notice given to each Director by hand delivered letter, mail, telegram, fax, email or  
39 by personal communication either over the telephone or otherwise. Special meetings  
40 shall be called by the Secretary in like manner and on like notice, on the written request  
41 of one-third of the Directors then in office.  
42

43 Contents of Notice. Neither the business to be transacted at, nor the purpose of, any  
44 regular or special meeting of the Board need be specified in the notice or waiver of  
45 notice of any such meeting, but may be so specified at the discretion of the person  
46 calling the meeting.

1  
2  
3  
4  
5  
6  
7  
8  
9  
10  
11  
12  
13  
14  
15  
16  
17  
18  
19  
20  
21  
22  
23  
24  
25  
26  
27  
28  
29  
30  
31  
32  
33  
34  
35  
36  
37  
38  
39  
40  
41  
42  
43  
44  
45  
46

Quorum.

- (a) At all meetings of the Board, a majority of the Directors in office shall be necessary and sufficient to constitute a quorum for the transaction of business, and the act of a majority of the Directors present at any meeting at which there is a quorum shall be the act of the Board of Directors, except as may be otherwise specifically provided by statute or by the Articles of Incorporation of the corporation or these Bylaws. If at any meeting of the Board, there shall be less than a quorum present, a majority of those present may adjourn the meeting from time to time until a quorum is obtained and no further notice thereof need be given other than by announcement at the meeting which shall be so adjourned.
- (b) If a quorum is present, when a meeting is convened, the Directors present may continue to do business, taking action by a vote of the requisite proportion of Directors as fixed above, until adjournment, notwithstanding the withdrawal of enough Directors to leave less than a quorum, or the refusal of any Director present to vote.

Reserved Powers. In addition to the powers and authority by these Bylaws expressly conferred on it, the Board may exercise all powers of the corporation and do all such lawful acts and things necessary and lawful to carry out the purposes of the corporation.

Compensation. The Directors of this corporation shall receive no compensation for their services as Directors. They may however, make payments for such clerical assistants and such professional services, as they deem necessary for the conduct of the affairs of the corporation.

Specific Powers and Duties. Without prejudice to the powers conferred by any other provision of these Bylaws, the Articles of Incorporation or law, the Board shall in addition thereto have the following specific powers and duties:

- (a)
  1. All Board members shall enforce League rules concerning good sportsmanship and conduct. These rules include prohibiting the use of alcohol, tobacco, profanity and harassment of players, coaches, and referees.
  2. All Board members shall have a current copy of league rules and have a general knowledge of those rules.
  3. Each Board member shall be willing to help in areas outside their responsibility, when requested to do so by another Board member.
  4. All Board members shall serve as positive ambassadors to the community.
- (b) From time to time make and change rules and regulations consistent with these Bylaws for the management of the property and business of the corporation.
- (c) To purchase or otherwise acquire for the corporation any property, rights and privileges which the corporation is authorized to acquire, at prices or consideration and generally on such terms and conditions as the Board shall think

1 fit; and at its discretion to pay for the same either wholly or partly in money, or  
2 other property or the property of the corporation.

3 (d) To sell, lease, exchange, mortgage, pledge or otherwise dispose of any property  
4 of the corporation, including disposition of all or substantially all of the property  
5 and assets of the corporation if in the usual and regular course of business, for  
6 such price or consideration, and generally on such terms and conditions as the  
7 Board thinks fit; and at its discretion to accept in whole or partial payment  
8 therefore, money, stock or other securities or properties, provided however, that a  
9 sale, lease, exchange, mortgage, pledge or other disposition of all or substantially  
10 all of the property and assets, with or without good will, of the corporation not  
11 made in the usual and regular course of business shall be upon such terms and  
12 conditions and such consideration as may be authorized in the manner prescribed  
13 by applicable law, as the same may be amended or altered from time to time.

14 (e) To appoint any person or corporation to accept and hold in trust for the  
15 corporation any property belonging to the corporation or in which it is interested,  
16 or for any other purpose, and to execute all such deeds and instruments and  
17 perform such acts as may be requisite in relation to any such trust.  
18

19 2. In affairs of JSYF, each Board of Director's member will have one vote in the  
20 appropriate matters of affairs of this League with the exception of the President. The  
21 President will have one tie-breaking vote only when needed.  
22

23 3. The Executive Board shall consist of 1) President, 2) Vice-President, 3) Commissioner,  
24 4) Secretary, 5) Treasurer and 6) Championship Director. These positions will be duly  
25 elected at the end of each football season. The football season ends at the completion of  
26 the championship games.  
27

28 4. The length of term of all officers shall be one year after election and all officers will  
29 serve until their successors are elected. This will not apply to Park Representatives.  
30 Each Member has the responsibility of electing their own Representative from its  
31 association to serve on the Board of Directors. The President of JSYF cannot be an  
32 acting Representative from any Member park.  
33

34 5. Any elected or appointed officer can be removed from a three-fourths (3/4) vote of the  
35 JSYF Board of Directors.  
36

37 6. No more than one person from any Member is to serve on the Executive Board if  
38 possible.  
39

40 7. The Membership of the organization shall hold an annual election for the purpose of  
41 electing the Executive Board for the following season. The President will appoint a  
42 nominating committee and consist of the following members of JSYF: Two (2)  
43 current Board members (excluding the President), and three (3) persons not currently  
44 on the Board but currently serving on the Board of a Member park. The nomination  
45 committee will accept nominations from the committee and floor. The committee's  
46 nominations are treated just as if made by Members from the floor with no vote being

1 taken on accepting or endorsing them. Nominations will be closed at the start of the  
2 first scheduled championship game unless so changed by JSYF Board. Whenever  
3 possible, no Member park should have more than one person on the nominating  
4 committee. This committee will meet by October 15th to begin soliciting  
5 nominations for each Executive Board position. A complete list of nominees should  
6 be available to all Park Representatives by October 31st.

7  
8 An election will be held during the week of the championship games or no later than  
9 November 15th. Each active Member of JSYF shall have one vote, and Board  
10 members will monitor this. If there is no opponent or protest, then all nominees will  
11 be considered officer-elect for that position.

12  
13 All Membership votes will be counted at halftime of the last game on championship  
14 week. The Secretary and President will be present at the vote count but will not count  
15 the votes. The ballots will be counted and two (2) non-Board members will initial  
16 tally sheets. The Secretary will be responsible for appointing these two (2) non-  
17 Board members. The results will be posted immediately following the counting of the  
18 ballots providing there is no protest.

19  
20  
21 **B. DUTIES OF OFFICERS SHALL BE AS FOLLOWS:**

22  
23 **PRESIDENT**

24 The President will be voted on by the Members. The President shall preside over the entire  
25 JSYF Board. He/She will act as the official representative of JSYF at all times. He/She shall  
26 call all meetings, set the agenda and appoint the following standing committees to act when the  
27 Board of Directors shall approve necessary and such committees. Membership, Bowl and  
28 Trophy, Rules, By-Laws, Scheduling, Protest, and any other Committees he/she deems  
29 necessary.

30  
31 **SECRETARY**

32 The Secretary will be voted on by the Members. The Secretary shall keep and maintain a  
33 complete and permanent record of minutes of all meetings of JSYF. He/She shall appoint all  
34 recorders of committee meetings of JSYF and shall act as record of Rules Committee and By-  
35 Laws Committee. He/She shall receive reports from treasurer of all moneys collected. A copy  
36 of the minutes shall be given out to the Board of Directors at the next scheduled meeting for  
37 approval.

38  
39 **TREASURER**

40 The Treasurer will be voted on by the Members. He/She shall pay all bills by check and checks  
41 must be signed by him/her and on record at the financial institution representing the President of  
42 JSYF. The Board of Directors shall be presented a copy of the financial report at each  
43 scheduled Board meeting. The Treasurer is responsible to the league for all financial matters  
44 concerning league matters. All expenses will be approved by the Board of Directors.

45  
46 **VICE-PRESIDENT**

1 The Vice-President will be voted on by the Members. He/She shall preside over any meetings  
2 that the President cannot attend and assist the President as needed..

3  
4 **COMMISSIONER**

5 The Commissioner will be voted on by the Members. He/She will be from a Member park. The  
6 major duty is to act as the chairperson for the scheduling committee. This position needs to be  
7 an individual with free time to assist the President in the day-to-day operations of the  
8 association. He/She is responsible for league standings.

9  
10 **ASSISTANT COMMISSIONER**

11 The Assistant Commissioner will be voted on by the Members. He/She will be from a Member  
12 park. The major duty is to assist the Commissioner and the scheduling committee. This  
13 position needs to be an individual with free time to assist the President and Commissioner in the  
14 day-to-day operations of the association. He/She is also responsible for league standings.

15  
16 **CHAMPIONSHIP DIRECTOR**

17 He/She is committee chair for the play-offs and the Championship games. He/She needs to  
18 prepare a budget at the beginning of the year on all cost for the Championship games including  
19 (officials, trophies, timekeepers, chains, etc.). This proposal needs to be presented to the Board  
20 of Directors in August for approval.

21  
22 **C. COMMITTEES:**

23  
24 Committees are appointed by the President and approved by the Board of Directors and they are  
25 responsible for recommendations and changes. They are to present them to the Board of  
26 Directors whenever needed.

27  
28 **MEMBERSHIP COMMITTEE**

29 The Membership Committee is responsible to provide a systematic way for increasing  
30 membership in this association. To urge associations to enroll teams at the earliest date possible  
31 of current year.

32  
33 **BOWL/TROPHY COMMITTEE**

34 All JSYF committees are directly involved with JSYF Bowl games. The Bowl/Trophy  
35 Committee will be in place by September 1, of the current year. Each of these committees will  
36 answer to the Board of Directors of their respective duties. A member from the Bowl  
37 Committee shall be present at all play-off games to handle any problems that may occur. This  
38 attendee must be neutral and cannot be from a park participating in the game. This committee  
39 must present three (3) bids for Bowl Game location and three (3) bids for trophies. These  
40 recommendations shall come from the committee and be presented to the Board of Directors.  
41 The Championship Director will be chairperson of this committee.

42  
43 **BY-LAWS COMMITTEE**

44 May be appointed for future years if necessary.

45  
46 **RULES COMMITTEE**

47 May be appointed for future years if necessary.

1  
2  
3  
4  
5  
6  
7  
8  
9  
10  
11  
12  
13  
14  
15  
16  
17  
18  
19  
20  
21  
22  
23  
24  
25  
26  
27  
28  
29  
30  
31  
32  
33  
34  
35  
36  
37  
38  
39  
40  
41  
42  
43  
44  
45  
46

**PROTEST COMMITTEE**

The Protest Committee shall make sure a protest has been written up correctly before it is presented to the Exeuctive Board so a decision can be made.

**SCHEDULING COMMITTEE**

The Scheduling Committee will schedule all games that are played in the league. This committee will maintain control and responsibility of all game schedules throughout the year. No changes can be made without going through the scheduling committee. The Commissioner will act as chairperson for this committee with the assistance of the Assistant Commissioner.

**ADVISORY COMMITTEE OF PAST JSYF BOARD MEMBERS**

The Advisory Committee of Past JSYF Board Members does not have voting rights. This committee gives input to the new JSYF officers on previous situations that arose in the past and advise on what action was taken.

**D. ORDER OF BUSINESS**

- Roll Call
- Reading and approval of last meeting’s minutes
- Treasurer’s Report
- Committee Reports
  - a. Vice-President
  - b. Commissioner
  - c. Officials
  - d. By-Laws
  - e. Rules
  - f. Protest
- Discussion of Old Business
- Introduction and Discussion of New Business
- Special Announcements from Members
- General Business
- Agenda for Next Meeting
- Adjournment

**E. MEETINGS**



- 1 1. The President of JSYF will schedule all meetings pertaining to any business of or for this  
2 association  
3
- 4 2. JSYF Board meetings are to be held at minimum once each month during the regular  
5 playing season (August 1 through November 30) and once each month during the off  
6 seasons by the Member parks if necessary.  
7
- 8 3. Each Member is responsible to have a Representative present at each meeting. If the  
9 elected Representative is not able to attend, the Member's President/Director may have  
10 an alternate attend. The Member's President/Director is at all times welcome and  
11 encouraged to attend. **If a Member misses a (one) meeting without a prior notice and  
12 a valid excuse a \$50.00 fine will be imposed.**  
13
- 14 4. All JSYF meetings must have a motion from the floor and a second before a meeting  
15 adjourns.  
16
- 17 5. If an attendee becomes unruly, the JSYF President has the authority to ask the  
18 attendee(s) to be dismissed from said meeting. Any dismissed attendee(s) must  
19 apologize to the other attendees before admission back to the next scheduled meeting.  
20
- 21 6. A quorum shall consist of 51% of the Board of Directors. A quorum is required to be  
22 present at regular scheduled meetings. If a special meeting is called, each Member park  
23 shall be given two (2) days advance notice to prepare and discuss the special situation.  
24
- 25 7. All meetings are closed to outsiders except for Member Presidents/Directors, and their  
26 Representatives. Any time a coach from one of the Members has an issue they feel  
27 needs to be presented to the Executive Board, they may schedule an appointment to  
28 present their case. At no time will matters brought to the JSYF Executive Board, be  
29 discussed outside the JSYF meeting. All information concerning a Member should be  
30 relayed to their respective Park Board. When conflicts arise between two of the  
31 Members, both parties will be given an opportunity to come before the JSYF Executive  
32 Board for discussion. After the parties have an opportunity to present their side of the  
33 conflict in discussion, they will be asked to leave the meeting.  
34

35 *If a conflict resolution needs to be made by the JSYF Board, one will be made at that time.*  
36

#### 37 **F. CONSTITUTIONAL AMENDMENT** 38

- 39 1. These articles of the JSYF Constitution and By-Laws may be added to or amended by  
40 two-thirds (2/3) majority of the Member Board of Directors present at any general  
41 meeting of JSYF. Revisions to these articles may be proposed and voted on by the  
42 Member Board of Directors between the months of November and May. Any/all  
43 revisions will be voted at the next JSYF meeting at least thirty days after the initial  
44 proposal. This time frame will allow the Membership an opportunity to review the  
45 proposals with the Officers of their Youth Associations. Any additions or revisions to  
46 the articles of the JSYF Constitution and By-Laws will become effective at the time of

- 1 change voted on by the Member Board of Directors. There will be no revisions or  
2 additions to the JSYF Constitution or By-laws after the month of May preceding the start  
3 of the current year's season.  
4
- 5 2. All amendments concerning Players, Game Officials, Coaches, League Members or  
6 Spectators safety shall be made to the JSYF Constitution and By-Laws only at a regular  
7 scheduled meeting. All amendments require two-thirds (2/3) vote of the Member Board  
8 of Directors. A quorum of 51% of the Member Board of Directors must be present to  
9 even consider the change for safety concerns. If approved by two-third (2/3) vote of the  
10 Member Board of Directors, a rule on safety will become effective immediately.  
11
- 12 3. A quorum will be required to vote on issues of "immediate attention" at any meeting.  
13 The Board of Directors will determine "immediate attention".  
14
- 15 4. All proposed amendments must be written and presented to the prospected committees  
16 so they may bring it to the Board of Directors to be voted on in the next regular meeting.  
17

## 18 **SECTION II – MEMBERSHIP**

### 19 **A. PARK MEMBERSHIP**

- 20
- 21
- 22 1. The Membership of JSYF shall consist of players on teams from parks recognized in  
23 good standing. Hereinafter defined: "A team shall consist of a group of players  
24 organized for the purpose of competing in Jefferson-Shelby Youth Football (JSYF). The  
25 Member has paid its said entrance fee on the terms outlined in the Constitution and is  
26 certified by the other Members.  
27
- 28 2. There will be no restriction as to race, sex, color or creed for the purpose of  
29 Membership. However, any new organization wishing to participate must be approved.  
30 A three-fourth (3/4) vote of the Member Board of Directors is necessary for a new  
31 Member to be approved and admitted to JSYF. If approved, Membership will be "at  
32 will" and can be revoked without cause with a three-fourth (3/4) vote of the Member  
33 Board of Directors. The new Member will be on probation for a period not to extend past  
34 two years from the date of approval. During the probationary period, the new park will  
35 not be allowed to vote on any issue.  
36
- 37 3. The entry fee for each Member will be \$500.00. Such fee will be due and payable  
38 before February 1 of the current year. If entry fee is not received, the association will  
39 not be allowed to participate in the JSYF for the current year. There will be no  
40 exceptions to this rule. Designated fees and fines not paid within a fourteen (14) day  
41 period from the date of assessment will forfeit voting rights of this association until paid  
42 in full. There will be an additional penalty of 20% added every fourteen (14) days,  
43 unless waived by the Board of Directors.  
44
- 45 4. Member registration shall be concluded when the \$500.00 entry fee is paid. The  
46 Member shall remain a Member of JSYF for a period of one year at a time. Members

1 shall be renewed each year with the paying of the JSYF dues provided that the  
2 concurring park abides by the rules of this association and remaining in good standing.

3  
4 5. Any Member’s Representative may be held in “not good standing” with JSYF. If the  
5 individual is found not in good standing with JSYF, the affected Member’s  
6 President/Director will be notified at the earliest time. The affected Member will, as  
7 soon as practical, replace the Representative and notify the Secretary of JSYF.

8  
9 6. At the beginning of each year each park will furnish the Secretary of JSYF, a complete  
10 list of their parks board including phone numbers

11  
12 7. For the mutual protection of all teams entered, to insure fulfillment of schedules and  
13 right conduct on the part of players and coaches of all teams no entry fee will be  
14 refunded.

15  
16 8. In order for a player to be eligible to participate at the Cahaba Valley (Briarwood)  
17 Member park, the child must be enrolled in the Briarwood School system for the current  
18 year. In addition, a child enrolled at the Oak Mountain Classical School for the current  
19 year will also be eligible to participate at the Cahaba Valley (Briarwood) Member park  
20 without requiring a release from the Member park in which the player is zoned.

21  
22 9. In order for a player to be eligible to participate within the John Carroll Member park, the  
23 child must be enrolled in one of the Catholic Diocese Schools of Birmingham in either  
24 Jefferson or Shelby County(ask Board for approved list) for the current year.

25  
26 **B. FINES AND PENALTIES**

27  
28 Any Member or person proven guilty of a violation of the rules of play or Membership will be  
29 subject to disciplinary action. Depending on the violation(s), fines, penalties, forfeitures and/or  
30 probation will be determined by the Executive Board . If a Member is dismissed from JSYF for  
31 any reason and would like to rejoin, all fines must be paid in full and the Member will be on  
32 probation for one year.

33  
34 **C. REGISTRATION OF TEAMS AND PLAYERS**

35  
36 1. Any child wishing to participate in JSYFL must present a birth certificate at time of his/her  
37 initial (the first time) certification to prove age. Every year they must also provide proof of  
38 residence and a copy of school registration to prove which community they live in and what  
39 school they attend. Proof of residence must be in the form of a photo copy of a current utility  
40 bill (electricity, natural gas, water) displaying the participant’s and their legal guardian’s current  
41 street address. JSYFL will only maintain the records for the current year’s certification records.  
42 Proof of residence must comply with the current JSYFL Community Play Rule guidelines.

43  
44 2. Participants who have been on a certified roster during the previous season will not be required  
45 to provide a birth certificate. If a player has been absent from a JSYFL roster for one or more  
46 years then the JSYFL Member park team must provide a photo copy of a valid birth certificate,  
47 proof of residence and copy of school registration for school attending. Proof of residence must  
48 be in the form of a photo copy of a current utility bill (electricity, natural gas, water) displaying

1 the participant's and their legal guardian's current street address. JSYFL will only maintain the  
2 records for the current year's certification records. Proof of residence must comply with the  
3 current JSYFL Community Play Rule guidelines.  
4

- 5 3. The Board of Directors will set time and date for certification.
- 6
- 7 4. All Members must have the official JSYFL roster form completed for each of their teams at the  
8 weigh-in/certification date set by the Board of Directors. If a team shows up without having the  
9 form filled out in the proper manner then the team in question will have to wait to be weighed  
10 until the form is filled out the way that it is required according to JSYFL rules.  
11
- 12 5. Member's teams that add players to their roster at any time must have the player certified. This  
13 can only be done with a birth certificate and an official weigh in. Both must be done in the  
14 presence of a JSYFL Officer or a Park Representative that is not associated with the player that  
15 is being certified.  
16

17 Exceptions to the rule above: A player that was written or typed on a specific teams' roster at the official  
18 JSYFL Certification, but was not certified because he/she was over their teams' maximum weight for the  
19 division at the weigh in will not be eligible to be added for that team. This player will only be eligible to  
20 move to a team in a higher weight division for their Home Park before the start of the season. The player  
21 can also be added after the start of the season provided that there is an available team in that division that  
22 has fewer than 22 players on their roster.  
23  
24

25 The Commissioner should initial the certificate and sign the back of the roster with his name, Member  
26 and the date. He then will notify the other Board of Directors at the next JSYF meeting or by e-mail or  
27 fax communication.  
28

29 6. No player will be added to a roster that has 22 or more players after final certification unless a  
30 family has just moved into the area. At such time the family will have to show proof where they have  
31 just moved in and the park must submit in writing the request for the child to play and it must be  
32 approved by the Board of Directors. This must be completed and the player must be certified on the  
33 roster before the player can participate in any league sponsored contest. No player will be added to a  
34 roster with 22 or more players once a team has past the halfway point of the season. Players may be  
35 added to a roster with less than 22 players all the way through the week of the last regular season game.  
36 **ALL PLAYERS ADDED TO ANY JSYFL ROSTER PAST FINAL CERTIFICATION WEIGH-IN**  
37 **DATE MUST BE CERTIFIED ON THE ROSTER BY A MEMBER FROM ANOTHER PARK**  
38 **OTHER THAN THE PARK WHERE THE NEW PLAYER WILL BE PLAYING.**  
39

40 Ex: 22 players on the roster and the team is getting ready to play their 5th game of the season they CAN  
41 NOT ADD ANY ADDITIONAL PLAYERS. However, same team has 2 players move away in two  
42 weeks and falls down to 20, at that point they can add up to 2 players up until the last regular season  
43 game.  
44

45 7. Certification shall be accomplished by the Board of Directors and they will have the final  
46 approval.  
47

48  
49 8. Any exceptions to player certification must have the approval of the Board of Directors  
50

1           9. Each team is required to have an announcement roster for every game of the season showing  
2 player name and jersey number.

3  
4           10. Each Member Park will submit preliminary team registration numbers at June's meeting and  
5 then each member park will submit the final number of teams per weight class within each park to the  
6 league at least one week prior to the scheduled July meeting so that the schedule can be finished prior to  
7 certification.

8           11. If 40 or more players have registered to play for a given weight class, the member park must  
9 split the players into two teams. The method in which the member park chooses to split the team is up to  
10 the member park. A member park will have to form a third team if the registration numbers for a specific  
11 weight class reach 75 and then another team with each additional 25 players.

12  
13 ***The penalty of failure of providing an announcement roster could result in a***  
14 ***forfeiture of the game as determined by the Board of Directors***

15  
16 **D. OFFICIAL WEIGH-IN**

17  
18 JSYFL works under the mandatory weigh-in policy prior to the first week of the season.

19  
20 1. The Board of Directors is required to have accurate medical scales and a certified 50 lb weight at  
21 the weigh-in site. These scales should be in good condition and be able to be calibrated periodically  
22 throughout weigh-in.

23  
24  
25 2. Official weigh-in will take place on the third (3rd) or fourth (4<sup>th</sup>) Saturday in August prior to the  
26 start of the current season at a time and location to be established by the JSYFL Board.

27  
28 3. Each player will be allowed to weigh-in one (1) time, without exception. The player, their  
29 parent/guardian and/or coach will determine what attire each individual player will wear for weigh-  
30 in in advance of the player stepping onto the scales. The player must wear, at a minimum,  
31 appropriate athletic shorts and if the player is female, an appropriate T-shirt. JSYFL ignores all  
32 digits to the right of the decimal on a digital scale. This in effect gives each player a 15-ounce  
33 clothing allowance.

34  
35 4. There is to be **NO** weight loss measures (running, jogging, exercising, drugs etc.) taken at time of  
36 certification or at the certification site. Anyone doing so will be asked to leave the premises.  
37 Coaches conducting such activity at certification site will face disciplinary action from the JSYFL  
38 Board. The JSYFL Board will not condone, authorize, nor encourage the use of drugs, starvation  
39 diets, are any other immediate weight loss gimmick.

40  
41  
42 5. Any player who does not complete the weigh-in/certification process will not be allowed to  
43 participate in any JSYFL sponsored game/event.

44 6. The JSYFL Board reserves the right to establish an additional date to weigh-in for participants  
45 with "special circumstances". The date and requirements to qualify as "special circumstances" for  
46 this additional weigh-in will be communicated to Member parks by the Board prior to the start of the  
47 official weigh-in set out above.

1  
2 7. A Member’s Representative and coach and one weigh-in witness from another park will conduct  
3 official weigh-in. If it has not been approved previously, all others will not be allowed in the weigh-  
4 in area.

5  
6 8. Once a child weighs in and makes weight, he/she may not be asked or forced to weigh in again.

7  
8 9. Each team will fill out the official JSYFL roster form in the order and format that it is specified  
9 by JSYFL and have it to present at the table when they reach weigh-in or they will have to move to  
10 the side and wait until they have a computer generated copy of the roster to present.

11  
12 10. Each team is responsible for having their official JSYFL certified team roster present at games. If  
13 there is any question about a player’s eligibility (roster wise) to play the game, contact your  
14 Member’s Representative. If it is determined by the JSYF Executive Board that an ineligible player  
15 has participated, the team he/she played on will automatically forfeit all of the effected games.

16  
17 ***Failure to adhere to the JSYFL weigh in procedures will result in the player being declared***  
18 ***ineligible for the entire season***

19  
20  
21 **E. COMPOSITION OF DIVISIONS**

22  
23 1. Each Member must have at least one team in three different divisions (exceptions need  
24 Board of Director’s approval).

25  
26  
27 2. .  
28 If a division has 8 or more teams (minimum of 4 6A and 4 7A teams), then JSYFL may  
29 divide the teams into two conferences. They will be called 6A and 7A. The divisions  
30 will be based on current AHSAA classifications for the member parks high school.

31  
32 Current classifications divide the parks as follows:

33 6A: Cahaba Valley, Chelsea, Helena, Homewood, Jr. Cavs, and Pelham

34 7A: Hoover, Oak Mountain, Spain Park, Thompson, Vestavia, and Trussville

35  
36 If a division has enough teams to split into conferences, regular season schedules will  
37 consist of 8 games with the following scheduling preferences: in-conference opponents,  
38 non-conference opponents, multiple games with in-conference opponents. Non-  
39 conference games will not count toward division standings.

40  
41 3. The various divisions will be formed as follows

42 1.  
43 5. **K/1<sup>st</sup> Grade- Rookie 1** – Teams for players who are in Kindergarten and 1<sup>st</sup> Grade.  
44 Players must turn 5 before June 1 of current year and cannot be 8 years old before  
45 December 31<sup>st</sup> of the current year. All Players must be in Kindergarten or 1st Grade in  
46 the fall of the current year. Players must weigh-in at 70.9 lbs or less to be considered an  
47 “Unrestricted Player”. All players weighing 71lbs. or more will be considered a

1 “Restricted Player” (see Restricted Player rules). **There will be an 8 play minimum play**  
2 **rule for this division.**

3  
4 6. **2<sup>nd</sup> Grade- Rookie 2** – Teams for players who are in 2<sup>nd</sup> Grade. Players cannot be 9 years  
5 old before December 31<sup>st</sup> of the current year. All Players must be in 2nd Grade or lower  
6 in the fall of the current year. Players must weigh-in at 80.9 lbs or less to be considered  
7 an “Unrestricted Player”. All players weighing 81lbs. or more will be considered a  
8 “Restricted Player” (see Restricted Player rules). **There will be an 8 play minimum play**  
9 **rule for this division.**

10  
11 7. **3<sup>rd</sup> Grade- Junior 1-** Teams for players who are in 3<sup>rd</sup> Grade. Players cannot be 10 years  
12 old before December 31<sup>st</sup> of the current year. All Players must be in 3rd Grade or lower  
13 in the fall of the current year. Players must weigh-in at 90.9 lbs or less to be considered  
14 an “Unrestricted Player”. All players weighing 91lbs. or more will be considered a  
15 “Restricted Player” (see Restricted Player rules). **There will be a 6 play minimum play**  
16 **rule for this division.**

17  
18 8. **4<sup>th</sup> Grade- Junior 2-** Teams for players who are in 4<sup>th</sup> Grade. Players cannot be 11 years  
19 old before December 31<sup>st</sup> of the current year. All Players must be in 4th Grade or lower  
20 in the fall of the current year. Players must weigh-in at 105.9 lbs or less to be considered  
21 an “Unrestricted Player”. All players weighing 106lbs. or more will be considered a  
22 “Restricted Player” (see Restricted Player rules). **There will be a 6 play minimum play**  
23 **rule for this division.**

24  
25 9. **5<sup>th</sup> Grade- Senior 1-** Teams for players who are in 5<sup>th</sup> Grade. Players cannot be 12 years  
26 old before December 31<sup>st</sup> of the current year. All Players must be in 5th Grade or lower  
27 in the fall of the current year. Players must weigh-in at 120.9 lbs or less to be considered  
28 an “Unrestricted Player”. All players weighing 121lbs. or more will be considered a  
29 “Restricted Player” (see Restricted Player rules). **There will be a 4 play minimum play**  
30 **rule for this division.**

31  
32 10. **6<sup>th</sup> Grade- Senior 2-** Teams for players who are in 6th Grade. Players cannot be 13 years  
33 old before December 31<sup>st</sup> of the current year. All players must be in 6<sup>th</sup> Grade or lower  
34 in the fall of the current year. Players must weigh-in at 135.9 lbs or less to be considered  
35 an “Unrestricted Player”. All players weighing 136lbs. or more will be considered a  
36 “Restricted Player” (see Restricted Player rules). **There will be a 4 play minimum play**  
37 **rule in this division.**

38  
39 **11. Once playoffs start there will be NO minimum play rule**  
40 **for any division.**

41  
42 **12. RESTRICTED PLAYER RULES**

43  
44 13. “Restricted Players” must play on the offensive or defensive line. On the offensive line  
45 they must play Center, Guard or Tackle they are not eligible to receive or run the ball but  
46 do NOT have to be covered up. On the Defensive line a dot player must play no wider

1 than a “5” technique(outside shoulder of the second player from center) against a normal  
2 offensive line alignment. A defensive dot player may line up in the following way  
3 against an overloaded offensive line a “5” technique on one side and a “9” technique on  
4 the other side. This means outside shoulder of the second player from center on the short  
5 side and outside shoulder of the third lineman from the center on the four man side of the  
6 center. Offensive Dot players can play in a 2, 3 or 4 point stance. All defensive dot  
7 players must be in a down position this means a 3 or 4 point stance. Dot Players can kick  
8 extra points and field goals but they can NEVER advance the ball and they may NOT  
9 play on kickoff or kickoff return unless approved by the JSYFL member parks.

10  
11  
12  
13  
14  
15  
16  
17  
18  
19  
20  
21  
22  
23  
24  
25  
26  
27  
28  
29

- 14. “Restricted” players will have a yellow dot located on the back of the helmet and will be notated on the official roster for easy identification.
- 15. If any player certified as a “Restricted Player” is found to have participated in a game at a position outside of the “tackle to tackle” designation or does not meet one of the above rules, this will be considered a violation that will result in a forfeiture of any and all games where the violation occurred. In addition to forfeiture of games there may also be a monetary penalty assessed to the Park whose team violates “Restricted Player Rules”.
- 16. NO player may play up a grade level unless their member park does not have a team for their grade level or unless special circumstances exist. Any player wanting to move up must have their park request the JSYFL Board of Directors for approval and must be accompanied by a letter from the parents requesting to move up.
- 17. In all divisions, no player will be eligible who is in 7th grade or higher classification for the current year.

30 **SECTION III – GOVERNING RULES**

31  
32 **A. BALL ADOPTION**

- 34 1. A Wilson K2 –18” circumference football or equal suitable substitution will be the  
35 authorized football for the Junior Teams (JR 1-2-3). Any park wishing to use a ball  
36 other than the Wilson K2 must have the substitute ball approved by the JSYF Board  
37 prior to the beginning of the current playing season (August 1<sup>st</sup>).
- 39 2. A Wilson TDJ or equal suitable substitution will be the only authorized football for the  
40 Senior Teams (SR 1-2-3). Any park wishing to use a ball other than the Wilson TDJ  
41 must have the substitute ball approved by the JSYF Board prior to the beginning of the  
42 current playing season (August 1<sup>st</sup>).

43  
44 **B. EQUIPMENT**

45



- 1 1. Fundamental equipment is the responsibility of the Members. JSYF encourages all  
2 Members to provide each player with the safest equipment available. The game officials  
3 can stop a player from playing any time for unsafe equipment.  
4
  - 5 2. All team jerseys must be numbered front and back. Scheduling Committee should  
6 review each team color and notify each team if there is a conflict apparent. Any  
7 Member buying new jerseys of a different color than the previous must obtain Board  
8 approval  
9
  - 10 3. Tennis shoes or athletic shoes with molded cleats or rubber may be used. No detachable  
11 cleats of any kind may be used. No metal cleats are permitted.  
12
  - 13 4. ALL mouthpieces will be attached to helmet, except for orthodontic mouthpieces for  
14 kids with braces.  
15
  - 16 5. Use of electric devices shall not be allowed between spotters or any anyone on the field.  
17 Electrical devices including cell phone, two way radios and head sets. Electrical devices  
18 do not include digital beepers. A violation of this rule could result in an automatic  
19 forfeiture of the game in question.  
20
  - 21 6. Games may be filmed only if the Home Team allows. Permission to film a game by the  
22 Visiting Team participating in the contest should not be unreasonably held by the Home  
23 Team.  
24
- 25 JSYF scheduled games, regular season or playoff, may not be filmed by coaches, family  
26 members, or players of non-game participants. During the current football season, if a  
27 coach, family member, or player of a team from a Member park or from a team that is  
28 not participating in the game violates this rule, the Member park will be fined \$500.00  
29 and the Head Coach of the team will be suspended for his/her next game. The Head  
30 Coach of the offending team will not be allowed to return to the sideline as a coach for  
31 any team in JSYF league scheduled game until the fine is paid by the Member park.  
32 This would also run concurrent with future JSYF football seasons.  
33

34 **C. GOVERNING RULES OF PLAY:**

35  
36 Games are governed by the official football rules of the Alabama State High School Athletic  
37 Association and rules and regulation set forth in this Constitution and By-Laws with the exception  
38 of the following:  
39

- 40 1. There will be only six (6) coaches on the field at any time. A medical person is included in the 6.  
41  
42
- 43 2. During an official called water break, the coach can go to the team to make sure all players get  
44 water. The maximum number of coaches on the field at any time is two (2).  
45
- 46 3. During game time outs, coaches may pull teams to the numbers. During a game time out, the  
47 players are not allowed to go off the field. If so, this is considered an illegal substitution. During a  
48 game time out, more than one coach is allowed to talk to the players. During a game time out only

1 two (2) coaches are allowed to go onto the field to talk with the players. After the whistle is blown,  
2 teams have 25 seconds to put the ball back in play.

3  
4 4. JSYFL has a minimum play rule in effect starting with the 2014 season. Minimum play will only  
5 be in effect for the regular season and will be handled the following way K/ 1<sup>st</sup> Grade and 2<sup>nd</sup> Grade  
6 all players are required to play 8 plays per game. 3<sup>rd</sup> Grade and 4<sup>th</sup> Grade all players are required to  
7 get 6 plays per game. 5<sup>th</sup> and 6<sup>th</sup> Grade all players are required to get 4 plays per game. Every coach  
8 must keep a play chart showing each player was in the game the required number of plays. If a  
9 player misses practice unexcused then the coach is not required to meet the MPR(minimum play  
10 rule) for that player during the week in which the player missed practice. Any coach found hiding a  
11 player or in any other way making his/her players unavailable will be disciplined by the JSYFL  
12 executive board.

13 Discipline will be as follows:

- 14 A. First offense happens before the 5<sup>th</sup> week of the season and the Head Coach will  
15 be warned and will be put on probation. First offense happens during the 5<sup>th</sup>  
16 week or after and coach will be suspended for 1 full game and put on probation.
- 17 B. Second offense during the same season and the Head coach will be suspended  
18 for the remainder of the regular season and any playoff or Championship Games.
- 19 C. If a coach is reinstated the following season and commits another offense then  
20 he/she will be suspended from JSYFL indefinitely.

21  
22  
23 5. The Game Referees will be responsible for:

- 24 a) Checking the game ball to see if they conform to the JSYF football rules.
- 25 b) To turn into the Executive Board the name of any coach showing  
26 unsportsmanlike conduct.
- 27 c) To be conversant of all rules of play and the rules of JSYF.
- 28 d) Turn into the Executive Board the names of any coaches or players ejected from  
29 game and reasons  
30

31  
32 6. Games are not officially over until all 4 full quarters are played unless both head coach's  
33 agree otherwise.

34  
35 7. All games that are cancelled or postponed for any reason must be played within that week at  
36 least by Sunday. Failure to reschedule during this time frame could result in a forfeit for both  
37 teams. All teams must play all of their games. The only exception to move a game to a later  
38 date is for school activities. A school activity must be documented in writing by the school  
39 and presented to the Board of Directors. Games postponed due to inclement weather should  
40 be made up as soon as possible. There will be no exception to this rule. If there is a problem  
41 with any of these rules, they will be addressed to the Board of Directors.

42  
43  
44 8. Overtime will be in effect for all games but will not exceed 2 overtime periods with teams  
45 having to go for 2 points in the second overtime period.

46  
47 9. Game officials **MAY** make time available to answer questions from the head coach as  
48 long as the coach maintains his/her composure and tone of voice.

- 1
- 2 10. A one (1)-point conversion from the two (2) yard line will be used, if run or passed.
- 3
- 4 11. A two (2) point conversion from the four (4) yard line will be used, if run or passed
- 5
- 6 12. A two (2) point conversion will be awarded from a kick with the ball being snapped from the
- 7 two (2) yard line
- 8
- 9 13. A team cannot break a huddle with more than 11 people.
- 10
- 11 14. The center is allowed to snap the ball either straight or sideways as long as it is done
- 12 between the legs.
- 13
- 14
- 15 15. All Kindergarten-4<sup>th</sup> grade games cannot have a nose tackle. And NO PLAYER may line up
- 16 within 2 yards of the center or inside the offensive guard. As long as the defensive player
- 17 has his/her hand on the ground and their helmet is within the shoulder pads of the offensive
- 18 guard then the player is legal. This means you may not line up in the center/guard gap, with
- 19 the guard having a maximum split of 1 foot. This rule is for the safety of the young centers.
- 20 If a team lines up within this zone or if a player does not have his/her hand on the ground,
- 21 then the play will be blown dead and the referee will warn the offending team's player and
- 22 coach. A subsequent violation will result in the play being blown dead and a 5 yard illegal
- 23 procedure penalty will be assessed on the defensive.
- 24
- 25 16. No player in any weight class may jump over the center.
- 26
- 27
- 28 17. Initial hit may not be to the head or with the head on offense or defense in any weight class
- 29 by any player. This will result in a personal foul penalty being assessed. If any player
- 30 commits multiple violations for this in a game and in the referees opinion any are considered
- 31 targeting, then the referee shall inform the offending player's and remove the player from
- 32 the game for at least 1 play. After the game the head of officials and JSYFL President shall
- 33 be notified of the infraction as soon as possible.
- 34
- 35
- 36 18. All 5<sup>th</sup> and 6<sup>th</sup> grade games are allowed to have a nose tackle; however, they must play down
- 37 in a 3-point stance or a 4-point stance and may not stand up over the Center for a distance of
- 38 1 yard. If any player is in a standing position directly over the center, the play will be blown
- 39 dead and will result in a 5 yard illegal procedure penalty.
- 40
- 41
- 42 19. No defensive player may stand up on the line of scrimmage between the tackles at any point
- 43 during any game. Any player standing up must be behind the imaginary line that goes
- 44 directly behind the Defensive Lineman
- 45
- 46 20. Holding will be a 5 yard penalty.
- 47
- 48

- 1 21. Offensive lineman will not be allowed to move their FEET once they are in a set 2-point  
2 stance. They will not be allowed to move at all once they are in a set 3-point or 4-point  
3 stance. If a lineman commits either of these infractions then it will result in a 5 yard illegal  
4 procedure penalty.
- 5 22. If there is a point difference at any time of 24 points, the time clock will go “hot” and stay  
6 hot for the remainder of the game, regardless if a team cuts the deficit to less than 24 points.  
7 If the point difference reaches 21 points at Halftime, then the time clock will go “hot” and  
8 stay hot. Hot Clock will stop for time outs and injury only.

#### 9 10 **D. PENALTIES**

- 11
- 12 1. No penalty will be more than Five (5) or Ten (10) yards will be observed on the 80 yard  
13 field.
- 14
- 15 2. All penalties are in accordance with the Alabama High School Athletic Association.
- 16

#### 17 **E. PROCEDURE AND PLAY**

- 18
- 19 1. The Scheduling Committee will establish a schedule that will consist of no more than  
20 eight (8) regular season games for each team in each division. The Committee should  
21 schedule all regular season games so that Member parks have equal numbers of games  
22 played in their home park to those considered away games. In creating the schedule, the  
23 Committee will take into consideration the number of teams a specific Member park will  
24 have in each division, home field availability, and potential black out dates each of  
25 which may impact the ability to keep home and away games equal.

26  
27 The Committee may have to insert the tiebreaker game or the three-way  
28 tiebreaker scenario immediately after the regular season has concluded to determine  
29 those teams that will advance to the playoffs.

30  
31 At the conclusion of the regular season, there will be one play-off round game and one  
32 championship game per division.

- 33
- 34 2. All games will be played on fields specified by the schedule committee and approved by  
35 the Board of Directors.
- 36
- 37 3. All teams will play on 80 yard long the width of the field can be no smaller then 40-  
38 yards(120FT) wide and no bigger than 53 1/3 Yards(160FT). A regulation length field may  
39 be used if approved by the JSYFL Executive Board.
- 40
- 41 4. There will be no obstruction within 10 feet of the sideline or end zones, preferable all  
42 games will be played in an enclosed park.
- 43
- 44 5. All parks will have goal post in regular season and post season play. If a park does not,  
45 they will not have any home games without approval of the Board of Directors.
- 46

- 1 6. Teams will be scheduled in their or their opponent's park. For home games, a nominal  
2 admission fee may be charged, not to exceed \$4.00 for adults, \$2.00 for children (under  
3 12). This charge is not applicable for persons in possession of an official JSYF badge.  
4
- 5 7. All parks are responsible for a player's box from the 30-yard line to the 30-yard line for  
6 each team's players. No player will be allowed past the 30-yard line on the sideline. All  
7 players must remain in this box during the game.  
8
- 9 8. All parks are responsible for coach's box from the 20-yard line to the 20-yard line for  
10 the coaches. This box should be located in front of the player's box.  
11
- 12 4. Two (2) offense and two (2) defense coach can be on the field with the 70 lb. players.  
13 One (1) offense and one (1) defense coach can stay on the field with the 80 lb. Players. If  
14 a coach (either offense or defense) is on the field coaching after the play has started,  
15 he/she will be warned one (1) time. After the next time, he/she will automatically be  
16 removed from the field and be replaced with another coach.  
17
- 18 5. If any Coach, head or assistant, is ejected from a game they must immediately cease to  
19 participate in the game, and leave the football complex.  
20
- 21 6.
- 22 7. Ejected coaches will automatically forfeit their right to participate in the next league  
23 game with the possibility of further suspension depending on why the ejection occurred.  
24 Any coach who continues to be argumentative, or threatens another league  
25 representative or official after being ejected, will face automatic suspension from the  
26 league. Suspended coaches can only be reinstated with majority approval by the  
27 Executive Board.
- 28 11. The head coach is at all times responsible for the actions of his/her players, coaches and  
29 fans and may be disciplined by the league for any unsportsmanlike conduct that his/her  
30 team may cause.
- 31 12. Coaches, parents, players and anyone else using profanity or showing threatening actions  
32 before, during or after any league function will be suspended by the Executive Board.  
33 Anyone involved in an altercation of physical violence will be placed in "not good  
34 standing" with JSYFL and not allowed in or around any Member's park.  
35
- 36 13. There is no excuse for anyone making a threat or threats. JSYFL will not tolerate this  
37 behavior.  
38

39 14. Player Ejections  
40

41 First offense

42 A player ejected in the 1<sup>st</sup> half of a game would be required to sit out the 2<sup>nd</sup> half  
43 of the current game, plus the 1<sup>st</sup> half of the next league game. A player ejected in  
44 the 2<sup>nd</sup> half of the game would be required to sit out the next league game (both  
45 halves). The player's suspension may be extended if the player is ejected for any  
46 form of fighting (throwing a punch, kicking or anything else).

1  
2                   Second offense

3                   The penalty for a second ejection during one season will be forfeiture of  
4 participation in the current game, plus the next 2 full games (both halves). If the  
5 player is ejected for a second time for any form of fighting then the player may  
6 be dismissed from the league.  
7

8                   Head Coaches must report any ejection (player, coach or parent) to his/her park  
9 and to the President of JSYFL within 24 Hours of the ejection. If the Head Coach  
10 fails to report the ejection, then the Head Coach will face immediate suspension  
11 from the league.  
12

13                   Any additional ejections, for any reason, will be grounds for immediate dismissal  
14 from the league.  
15

16                   Any protest regarding ejections will be considered by the Executive Board.  
17

- 18 15.    The play clock for the K/1, 2<sup>nd</sup> and 3<sup>rd</sup> Grade divisions is 35 seconds. The play clock for  
19 the 4<sup>th</sup>, 5<sup>th</sup> and 6<sup>th</sup> Grade divisions is 25 seconds.  
20

21 **F. KICKING**

22  
23 Kick-Offs  
24

- 25 1.    Effective with the 2018 Season all divisions will begin the first possession of each half  
26 and every possession after a score with the ball being spotted on the 25-yard line, with  
27 the exception of a “safety”. The team receiving the football after a “safety” will receive  
28 the ball on their 35-yard line.(adopted 9/16/2018)  
29

30 Punting  
31

- 32 1.    Punts in all divisions will be a walk off of 30 yards anywhere on the field; however,  
33 walk off will never take the ball deeper than the 10-yard line. Example: If you call for a  
34 punt when you are on the opponent’s 30 yard line you will only get a 20 yard walk off to  
35 their 10 yard line. (adopted 9/16/2018)  
36  
37 2.    At the moment a team declares “punt”; in order to simulate the punt play, 10 seconds  
38 shall run off of the clock and the clock will not restart until the next snap of the ball.  
39

40 Extrta-Points/Field Goals  
41

- 42 1.    Will be handled according to AHSAA rules and regulations. This means that they may  
43 be rushed but the defensive team can NOT hit the center.  
44

45  
46 **G. GAME TIME**

- 1  
2 1. All teams entering this association must play at the time and place scheduled by the  
3 scheduling committee.  
4
- 5 2. Games will be played on Monday, Tuesday and Thursday nights starting at 6:00p.m. and  
6 7:15 p.m. Rained out games will be played at the time and place scheduled as soon as  
7 possible, to be decided by the home park representative with approval of commissioner.  
8 All single games will be played at 6:30 p.m. All Jamboree games will be played after  
9 3:00 pm to avoid heat related injuries to players.  
10
- 11 3. Teams scheduled for a game must be ready to play at the scheduled time. This includes  
12 dressing and warming up.  
13
- 14 4. All Divisions within JSYFL will play 8-minute quarters by the clock (stop clock). Clock will  
15 be kept in accordance with the Alabama High School Football Rules. If no timekeeper is  
16 available then the game officials will keep the official time on the field, however the home  
17 park will have someone work in the press box to work the scoreboard. Time between halves  
18 will be 10 minutes, there will not be a set time between games but no game can start ahead  
19 of the scheduled time unless both coaches agree to start earlier.  
20
- 21 5. The Game officials have the option only to delay a game. If lightning occurs before the  
22 first scheduled game, there will be a 30-minute waiting period from the original start  
23 time before the game may be postponed. If lightning occurs before the second scheduled  
24 game, there will be a 30-minute waiting period from the original start time or end of the  
25 first game before the game may be postponed. The home field Member's  
26 President/Director or Representative or JSYF Representative plus a coach must agree to  
27 call off the game. The Home field President/Director or Vice President/Assistant  
28 Director can stop or postpone a game due to inclement weather to preserve the playing  
29 surface at any time.  
30
- 31 6. If a game must be stopped during play for any reason it must be restarted where it was  
32 stopped. The official scorekeeper just takes record of: score, time remaining, quarter,  
33 where the ball is marked, what down and who has possession of the ball.  
34
- 35 7. League games will take precedence. Teams in JSYF shall be allowed to play outside  
36 this League; at no time will non-League games interfere with JSYF functions or play.  
37 (This includes pre-season and post-season play.)  
38

## 39 H. PARKS

- 40
- 41 1. JSYF will not dictate to the individual parks on how to run their programs, as long as  
42 they abide by the rules of this constitution and by-laws of JSYF.  
43
- 44 2. Any park talking to or considering talking to another league will have the courtesy of  
45 notifying the President of JSYF as soon as possible.  
46

- 1 3. JSYF plays under the rules of the AHSAA. Within these rules are sub rules that each  
2 Member has to abide by.  
3
- 4 4. All parks will allow the Member parks to enter their park for unstated reasons. (This  
5 includes any member of the Executive Board.)  
6

7 **I. COMMUNITY PLAY RULE**

- 8 1. In community play, the public high school zone in which the player resides or the private  
9 school in which the player attends will define the Member park community.  
10
- 11 2. All players must play for the member park community in which they reside or for the private  
12 school that they attend. No longer will players be given releases to play for any other  
13 member park. If a player lives outside of JSYFL communities and does not attend a private  
14 school that has obtained membership within JSYFL then they will not be allowed to play  
15 within JSYFL.  
16
- 17 3. Players who attend one of the private school Member Parks must play for the private school  
18 they attend. The following exceptions to this rule are as follows.  
19
  - 20 A. If a player lives within the city limits of one of the JSYFL cities then the player will have the right to  
21 play for either the private school program or the program for the city where they live. The cities that  
22 the player may live in and play for are Alabaster, Chelsea, Helena, Homewood, Hoover, Pelham or  
23 Vestavia.
  - 24 B. If a Player lives within any unincorporated area but still may attend a school system within JSYFL  
25 communities then they can play for that program as long as they obtain a release from the private  
26 school member park that they attend.
  - 27 C. Any child attending Westminster may choose to play for Cahaba Valley youth football  
28 or the JSYFL community that they reside within.
  - 29 D. Any child enrolled in the PSR program within the local Catholic churches is afforded the  
30 right to play for the Jr Cavaliers Youth Program. Paperwork providing enrollment must  
31 be presented at certification.  
32
- 33 4. If one Member Park community serves 2 or more high schools then the players within that  
34 park **MUST** be placed on teams according to which high school they are zoned to attend.  
35 There will be no exceptions to this rule.  
36  
37
- 38 5. It is the total responsibility of each Member Park to make sure all players are legal and  
39 conform to the community play rule. If a child is caught playing out of his community then  
40 all games previously played for that team will be forfeited by that team.  
41
- 42 6. All players in JSYFL must live within JSYFL school zones or live within the city limits of  
43 Alabaster, Chelsea, Helena, Homewood, Hoover, Pelham or Vestavia. Players can also  
44 participate in JSYFL if they attend any school zoned for the high schools in JSYFL  
45 communities. Those High Schools are as follows: Briarwood, Chelsea, Helena, Homewood,  
46 Hoover, John Carroll, Oak Mountain, Pelham, Spain Park, Thompson, and Vestavia.  
47
- 48 7. The Executive Board will resolve any dispute regarding any of the above Community Play  
49 Rules. The Executive Board decision on the matter will be final.  
50



1 *Any Members found recruiting from another Member’s area can and will be found “Not in good*  
2 *standing with JSYFL.” This problem has been the downfall of many outstanding associations.*  
3  
4

5 **J. PRACTICE GUIDELINES**  
6

7 For the following Practice Guidelines a week will be from Sunday through the following  
8 Saturday.  
9

- 10 1. No practice with any pads will start any sooner than a date set each year by the Board of  
11 Directors. Prior to the start of the JSYF season each team will have a total of 22 practice days.  
12 Prior to the start of the regular season, a team can only practice for a total of 10 hours per week  
13 maximum.  
14
- 15 2. After the regular football season starts, a team’s week of practice cannot be more than 8 hours  
16 when not playing a game and only 6 hours when playing a game.  
17
- 18 3. If the heat index is between 100F- 105F then water breaks should be given every 15-20  
19 minutes and no shoulder pads or helmets should be worn during non contact parts of practice(  
20 ex: stretching/warm up, sprints). If the heat index reaches 106F - or higher then practice will  
21 only be allowed with executive board approval.  
22
- 23 4. Only one practice per day not to exceed two hours of practice on any given day, there will be  
24 no exceptions to this rule. *If a team is found in violation, the first offense will be a fine as set by*  
25 *the Executive Board of Directors*  
26
- 27 5. *The amount of contact allowed per practice and/or per week will fall in line with any rules*  
28 *that the AHSAA puts in place.*  
29

30 ***ANY COACH AND/OR PARK FOUND IN VIOLATION OF***  
31 ***THESE PRACTICE RULES WILL BE SUBJECT TO***  
32 ***IMMEDIATE SUSPENSION, FINE AND ANY OTHER***  
33 ***PENALTY THAT IS DEEMED APPROPRIATE BY THE***  
34 ***BOARD OF DIRECTORS.***  
35  
36

37 *There will be no exceptions to the above rule. Failure to abide by this rule could result in*  
38 *dismissal of any coach or Member found to not being in compliance with JSYF.*  
39  
40

41 **K. BOWL – LEAGUE AND POST SEASON PLAY**  
42

- 43 1. A JSYFL Championship will be held at the end of each season’s play. The two teams making  
44 it through the playoffs will compete in this event, hereinafter, known as the JSYFL

1 Championship Bowl. The game will be played on the date specified and at the location specified  
2 by the Board of Directors.

3  
4  
5 2. Divisions that split into 6A and 7A conferences will have separate playoffs with teams ranked  
6 based on record against in-conference opponents.

7  
8 3. JSYFL will have playoffs to determine the two teams that will play in the Championship  
9 Bowl for each grade level. The Board of Directors will set the date when Playoffs will start. The  
10 Board of Directors and member parks reserve the right to decide if 4 or 8 teams will qualify for  
11 playoffs for each grade level.

12 .  
13 4.If only 4 teams make the playoffs in a grade level then the following format will be used:

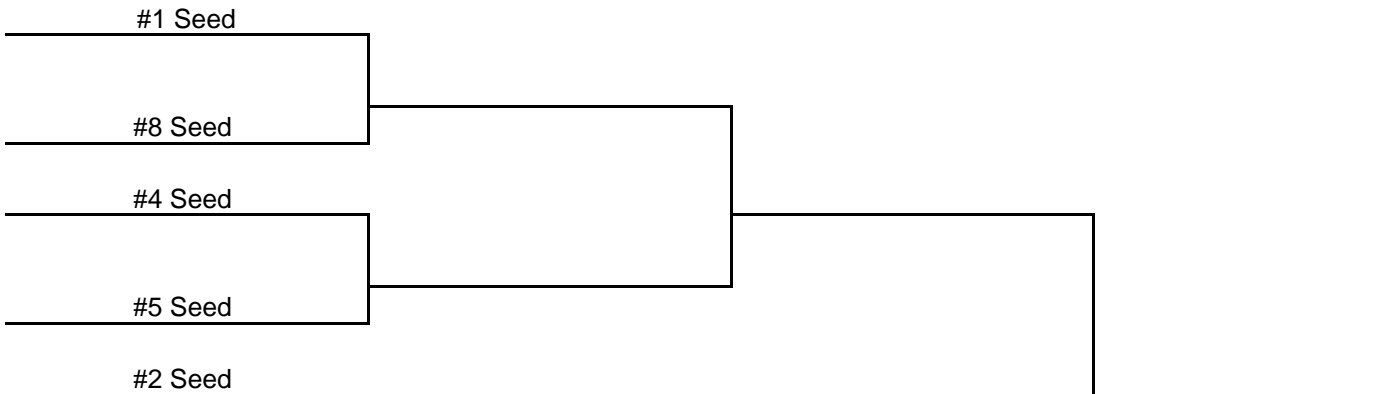
- 14
- 15 a. The First place team in each grade level will play the Fourth place team.
- 16
- 17 b. The Second place team in each grade level will play the Third place team.
- 18
- 19 c. Highest place team is home team and playoff game will be played at their field if available.
- 20

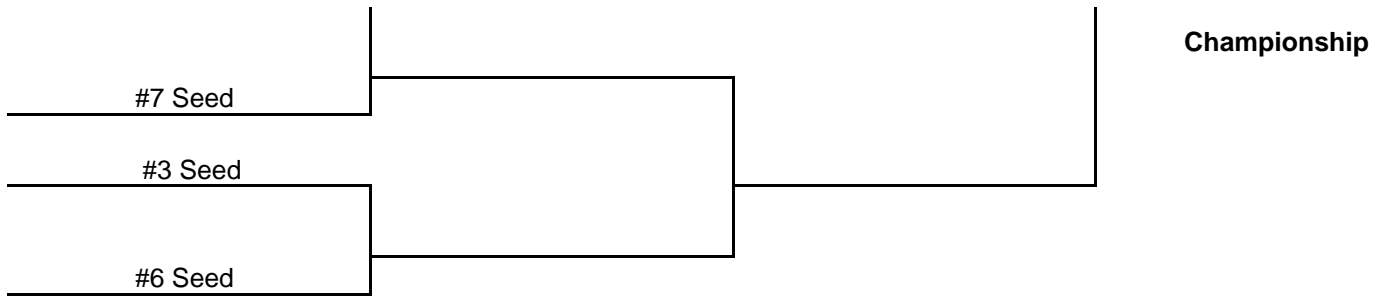
21 If a tie during the regular season occurs, the following format will determine the pairings:

22  
23 TIE BREAKER

- 24 1. Head-to-Head
- 25 2. Point Differential maximum 14 points per game
- 26 3. Record against teams who have already made the playoffs for the current
- 27 season.
- 28 4. Coin Toss
- 29
- 30
- 31

32 **5. If any grade level has 8 teams make the playoffs. The following playoff format will be**  
33 **used to determine what teams make the playoffs and what the match-ups will be.**  
34





1  
2  
3  
4  
5  
6  
7  
8  
9  
10  
11  
12  
13  
14  
15  
16  
17  
18  
19  
20  
21  
22  
23  
24  
25  
26  
27  
28  
29  
30  
31  
32  
33  
34  
35  
36  
37

**TIE BREAKER**

- 1. Head-to-Head**
- 2. Point Differential maximum 14 points per game**
- 3. Record against teams who have already made the playoffs for the current season.**
- 4. Coin Toss**

6. If a park is fined and any of their teams make the playoffs, their fine(s) must be paid before they can participate in playoff games. If they refuse to pay the fine(s) then they will forfeit the right to participate and the team behind them in the standings will take their place.

7. No other post-season activities will be scheduled to conflict with this bowl or any other JSYF sponsored post-season play.

**SECTION IV – PROTEST**

**A. PROCEDURES**

- 1. Whenever a matter of protest arises during a game, the Captain or the Coach of the protesting team will immediately notify the Head Official. The Head officials only duty in a protest is to notify the opposing coach and the official scorekeeper. The head coach of the protesting team will be responsible to notify their Board Representative and he/she notifies the President of JSYF that the game was played under protest. No points will be awarded until the protest is settled.
- 2. All protest must contain the following information:
  - a. Teams and weight division.

- 1           b. Date
- 2           c. Time
- 3           d. Place game played
- 4           e. Names of all Officials
- 5           f. Reason for protest and any supporting evidence
- 6           g. Score
- 7           h. Time of game (quarter)
- 8           i. Rule or section violated
- 9           j. A copy of the protest must be presented to the board at the next scheduled board
- 10           meeting by the protesting parks representative.
- 11           k. A \$100.00 fee must accompany any protest and all protest must be in typewritten
- 12           form. Money will remain in the treasury until the protest is satisfied. (The \$100.00
- 13           will be refunded only if the protest is won.)
- 14
- 15        3.     Protests will be handled only if all the above outlined is met. Protests will be heard as
- 16           follows:
- 17
- 18           a.       The Executive Board will hear the written protest and it will be discussed based
- 19           on the grounds of clarity and supporting evidence as presented by both parties
- 20           involved.
- 21           b.       A general vote will be taken, and a 51% majority of the Executive Board will
- 22           decide the outcome. JSYF's decision is final. No further discussions will be
- 23           heard on the conflict.
- 24           c.       All protest should be sent through the protest committee before coming to the
- 25           Executive Board for review. This committee should make sure the protest has
- 26           been written up correctly before an Executive Board decision can be made.

27        *There will be no exceptions to the above guidelines. If at any time a rule or subject is not*  
 28        *covered, JSYF Executive Board will make the final decision on the conflict.*

29

30        **SECTION V – OFFICIALS**

31

32        **A.     OFFICIALS COORDINATOR**

33

34        He/She will be responsible for all officials. This will include the scheduling of officials at all

35        games. He/she will ensure all are qualified and are familiar to the rules of play JSYF plays

36        under the Alabama High School Association rules. Officials will be familiar with the additional

37        rules established by JSYF. A contract must be issued to the JSYF Board at the beginning of the

38        year stating cost per game (Jr. and Sr.) including play-offs and Championship games. If

39        officials wish to quit working with JSYF, they must give notice of current season and 1 year,

40        which will be considered sufficient notice for JSYF Board to respond. The JSYF Board of

41        Directors must approve this contract. Each game will have three (3) officials and one (1)

42        scorekeeper. If the officials do not show up, a fine will be levied by the JSYF.

43

44        **B.     GAME OFFICIALS DUTIES:**

45

- 1 1. JSYF shall have only officials registered with the Alabama High School Athletic  
2 Association and the fees to be paid shall be determined by contract from the Officials  
3 Association and the JSYF Board.  
4
- 5 2. Each individual organization will be responsible for the cost of the officials, and their  
6 fees will be paid on the field, after the last scheduled game has been played that day. If  
7 more than one set of three (3) officials is used, the officials leaving will be paid after the  
8 last game they will call for the day.  
9
- 10 3. Each park should keep a logbook or some type record of who the officials were and how  
11 much they were paid.  
12
- 13 4. All officials must complete a payment form before any park pays them. JSYF will  
14 provide this form.  
15
- 16 5. There will be three (3) officials at each game by JSYF decision.  
17
- 18 6. Each park will have an official timekeeper certified by the Officials coordinator, no  
19 exceptions.  
20
- 21 7. The officials' coordinator of the association cannot officiate every championship game,  
22 but must be there to observe his/her crew in case something happens or is needed.  
23

24 **C. JEFFERSON-SHELBY YOUTH FOOTBALL UMPIRES ASSOCIATION**  
25

26 It is the responsibility of the Park Representative to inform the Booking Agent of canceled or  
27 non-payable games. (If officials report, single game rate will be paid.)

28 See the attached rate sheet.